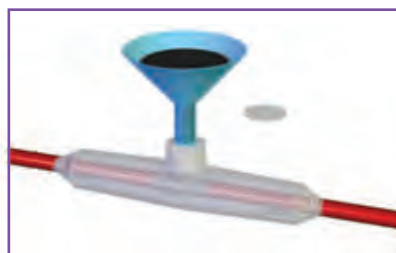
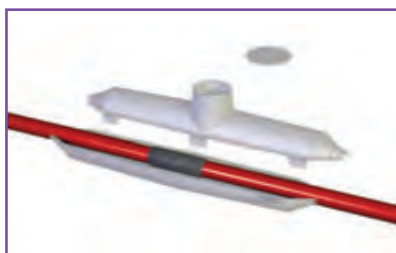


Low Tension Straight and Branch Joints

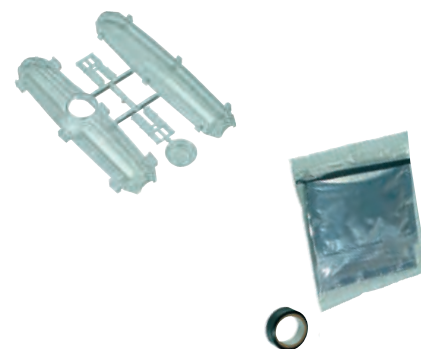
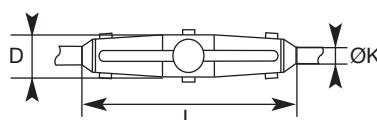


Straight joint

Standard packing in cardboard box:

- ✓ Mould.
- ✓ Separators.
- ✓ Resin to be cast.
- ✓ Sealing ribbon.
- ✓ Installation instructions.
- ✓ Without connector.

Application: energy, signalisation, telephony.



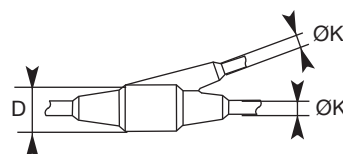
Item code	x1	Part No.	L	D	Ø K	Capacity (mm ²)
7901058		BJ10	202	36	8-26	4x10
7901061		BJ12	260	47	16-32	4x25
7901062		BJ13	360	55	21-38	4x50
7901063		BJ14	400	70	26-41	4x70

Branch joint

Standard packing in cardboard box:

- ✓ Mould.
- ✓ Resin to be cast.
- ✓ Sealing ribbon.
- ✓ Installation instructions.
- ✓ Without connectors.

Application : energy, signalisation, telephony.



Item code	x1	Part No.	L	D	Ø K (mm ²)	Main cable (mm ²)	Branch cable
7901080		BJY1	175	60	6-21	4x10	4x4
7901081		BJY2	225	70	9-24	4x16	4x10
7901082		BJY3	240	99	25-42	4x50	4x25
7901083		BJY4	285	100	29-53	4x95	4x50

Resin to be cast

- ✓ Polyurethane resin two components according DIN VDE 0291, 2nd part, for resin boxes to be cast for low tension energy cable up to 1 KV.
- ✓ Halogen Free.
- ✓ Resistant to combustion.
- ✓ Storage conditions: at ambient temperature between +15° and + 35°.
- ✓ Date limite of use marked on the bag



Item code	x1	Part No.	Volume (ml)
7907003		EG0	143
7907002		EG1	286
7907004		EG2	464



Packing

Unless otherwise stated, all dimensions are in millimeters.