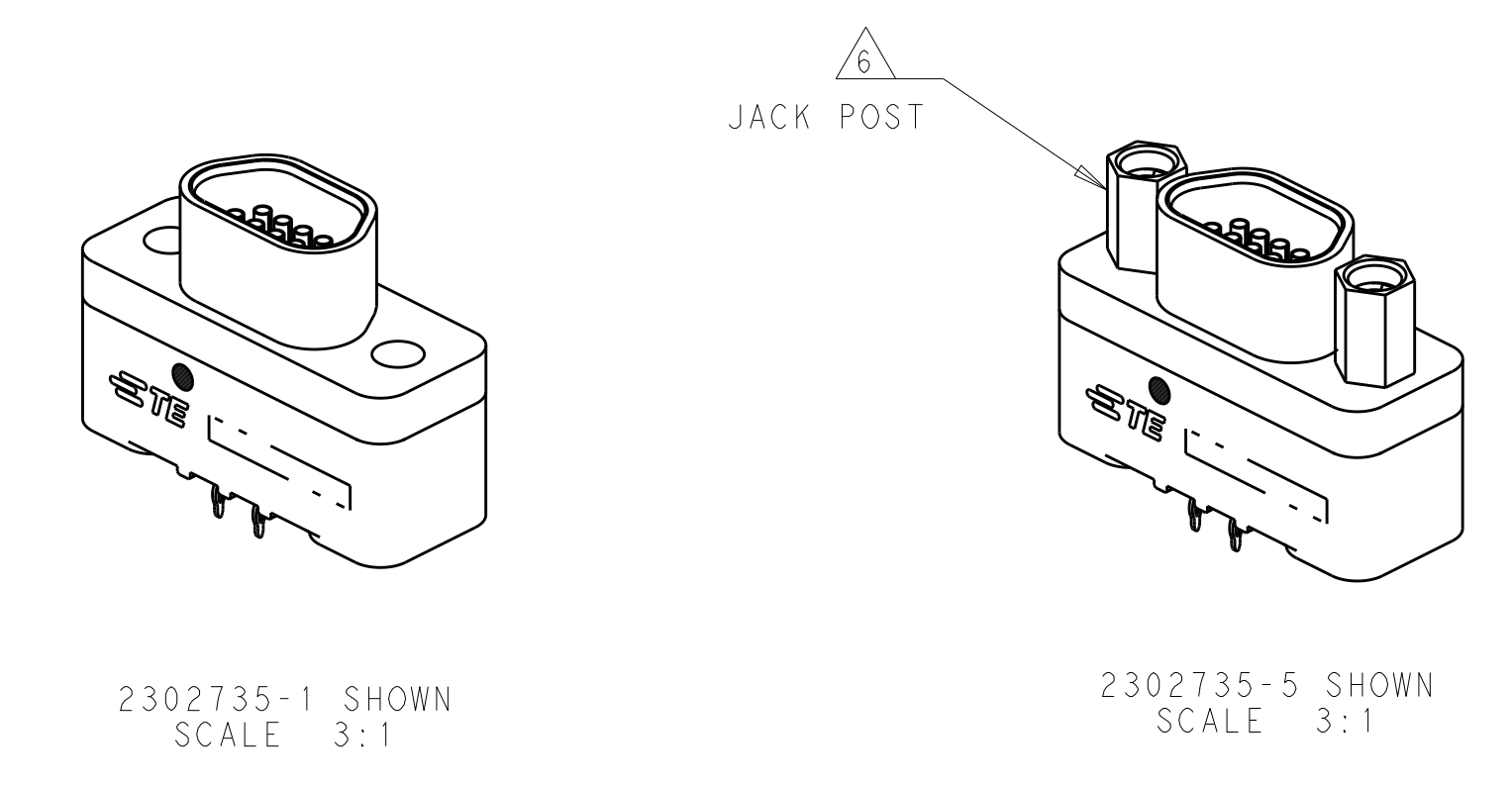
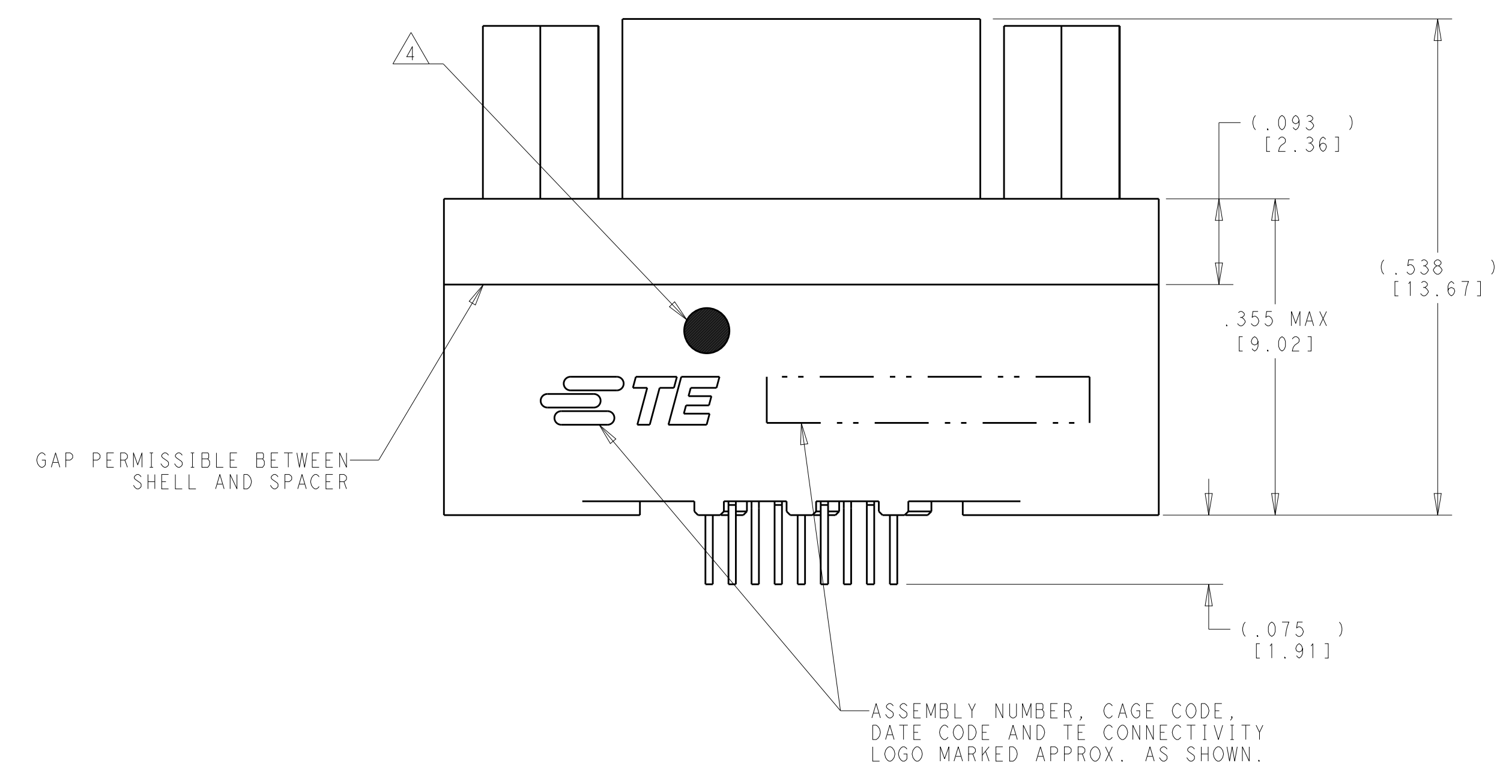
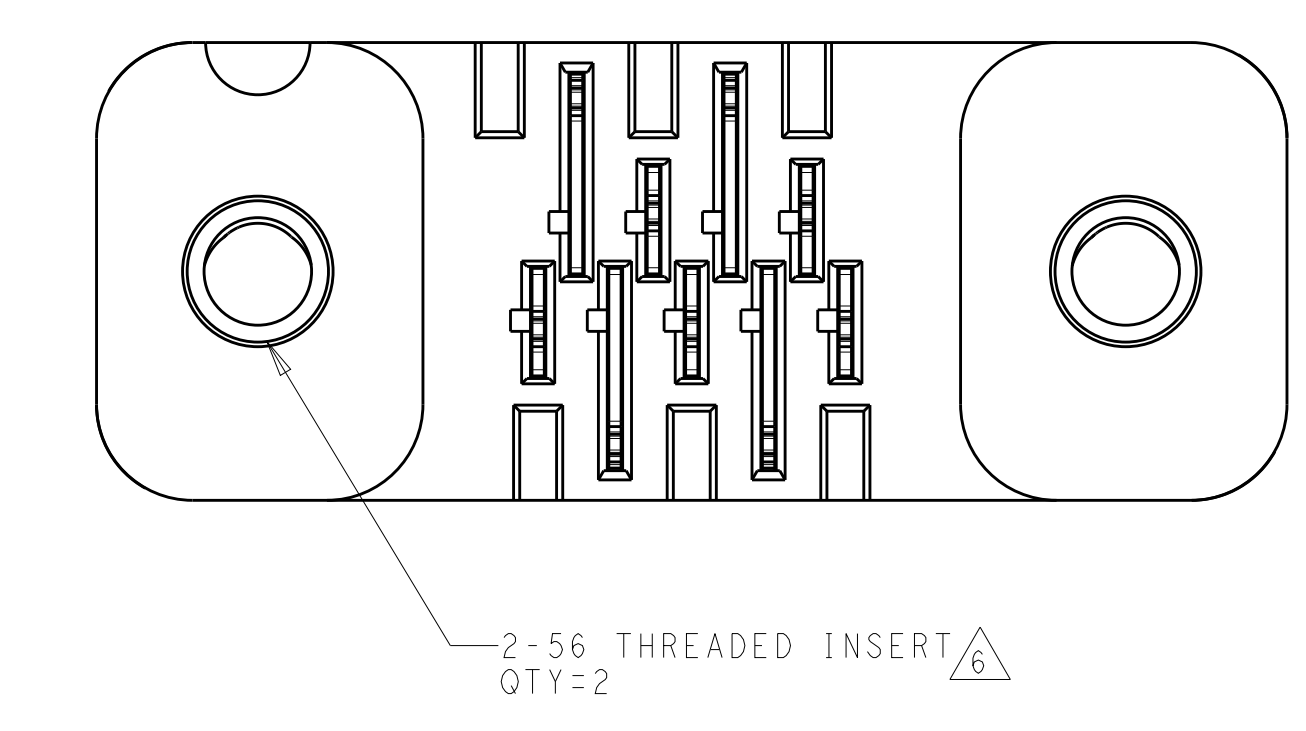
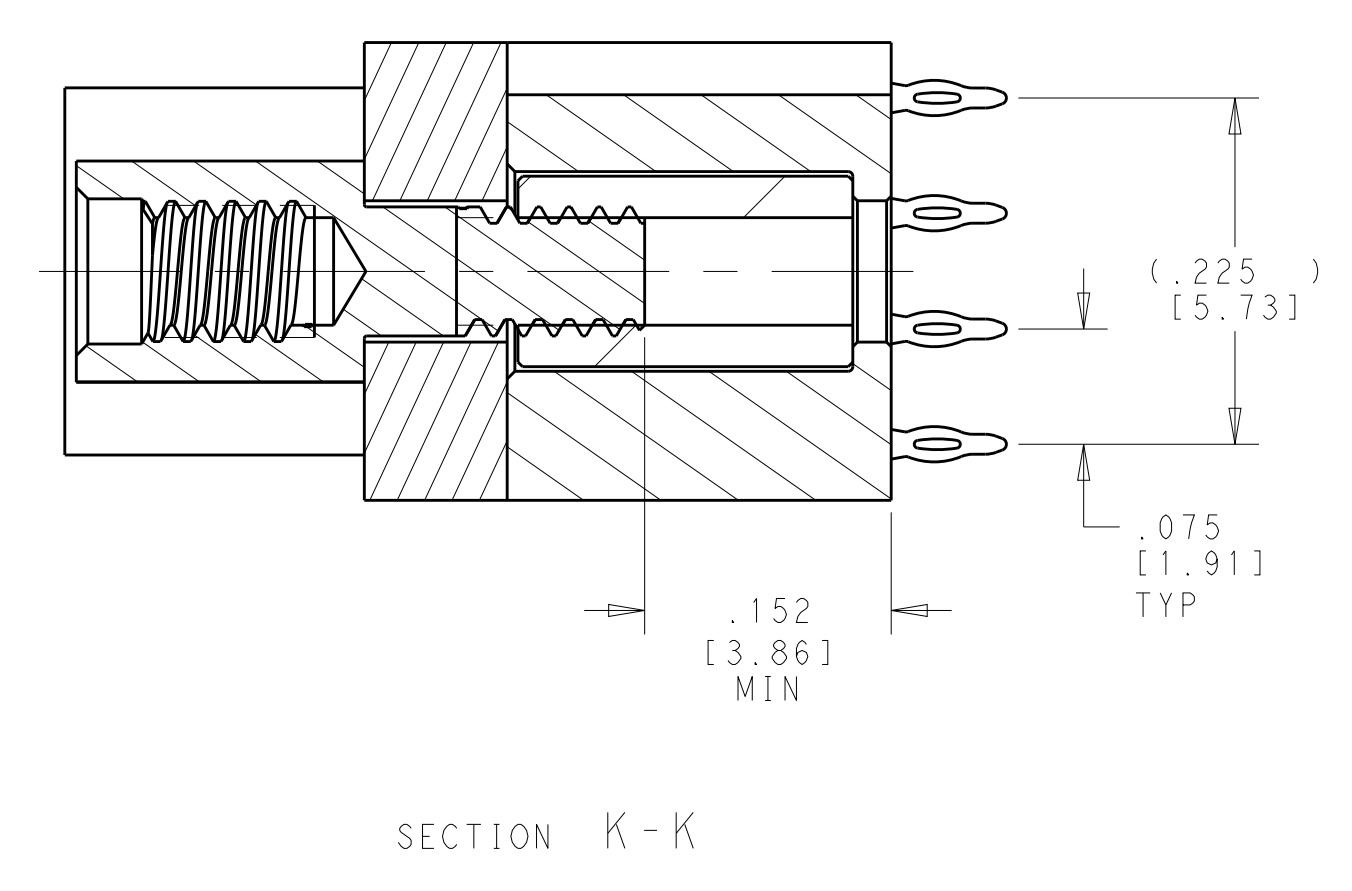
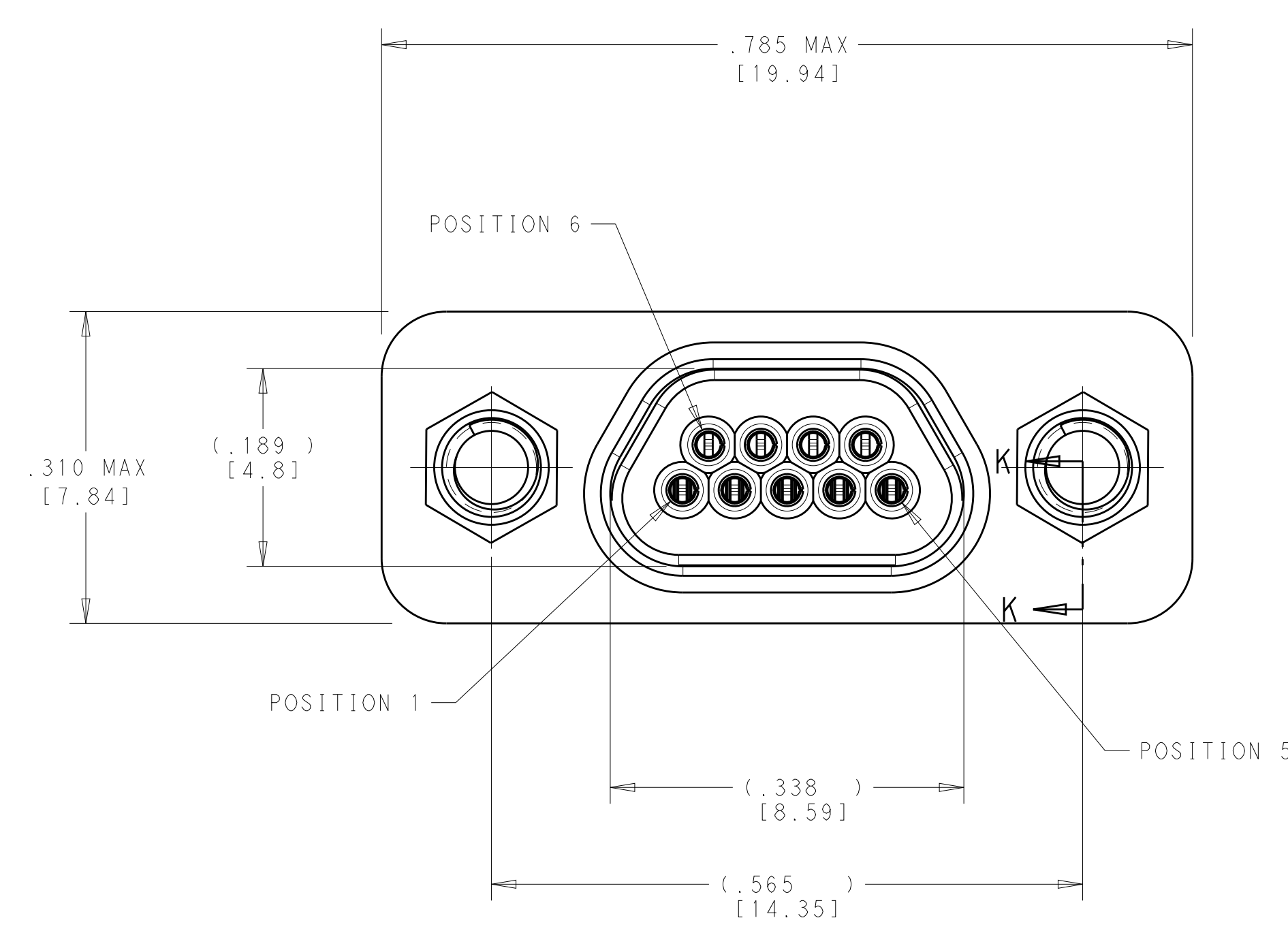


REVISIONS				
REV	DATE	BY	CHK	APPD
1	PROPOSED	20200316	DCB	KA



Au	THREADED INSERT / JACK POST	BLACK ZINC	ALUMINUM	TBD	3-2302735-0
SnPb	THREADED INSERT / JACK POST	BLACK ZINC	ALUMINUM	TBD	2-2302735-9
Au	THRU-HOLE	BLACK ZINC	ALUMINUM	TBD	2-2302735-8
SnPb	THRU-HOLE	BLACK ZINC	ALUMINUM	TBD	2-2302735-7
Au	THREADED INSERT	BLACK ZINC	ALUMINUM	TBD	2-2302735-6
SnPb	THREADED INSERT	BLACK ZINC	ALUMINUM	TBD	2-2302735-5
Au	THREADED INSERT / JACK POST	PTFE	ALUMINUM	TBD	2-2302735-4
SnPb	THREADED INSERT / JACK POST	PTFE	ALUMINUM	TBD	2-2302729-3
Au	THRU-HOLE	PTFE	ALUMINUM	TBD	2-2302735-2
SnPb	THRU-HOLE	PTFE	ALUMINUM	TBD	2-2302735-1
Au	THREADED INSERT	PTFE	ALUMINUM	TBD	2-2302735-0
SnPb	THREADED INSERT	PTFE	ALUMINUM	TBD	1-2302735-9
Au	THREADED INSERT / JACK POST	PASSIVATED	STAINLESS STEEL	TBD	1-2302735-8
SnPb	THREADED INSERT / JACK POST	PASSIVATED	STAINLESS STEEL	TBD	1-2302735-7
Au	THRU-HOLE	PASSIVATED	STAINLESS STEEL	TBD	1-2302735-6
SnPb	THRU-HOLE	PASSIVATED	STAINLESS STEEL	TBD	1-2302735-5
Au	THREADED INSERT	PASSIVATED	STAINLESS STEEL	TBD	1-2302735-4
SnPb	THREADED INSERT	PASSIVATED	STAINLESS STEEL	TBD	1-2302735-3
Au	THREADED INSERT / JACK POST	CADMIUM	ALUMINUM	TBD	1-2302735-2
SnPb	THREADED INSERT / JACK POST	CADMIUM	ALUMINUM	TBD	1-2302735-1
Au	THRU-HOLE	CADMIUM	ALUMINUM	TBD	1-2302735-0
SnPb	THRU-HOLE	CADMIUM	ALUMINUM	TBD	2302735-9
Au	THREADED INSERT	CADMIUM	ALUMINUM	TBD	2302735-8
SnPb	THREADED INSERT	CADMIUM	ALUMINUM	TBD	2302735-7
Au	THREADED INSERT / JACK POST	NICKEL	ALUMINUM	TBD	2302735-6
SnPb	THREADED INSERT / JACK POST	NICKEL	ALUMINUM	TBD	2302735-5
Au	THRU-HOLE	NICKEL	ALUMINUM	TBD	2302735-4
SnPb	THRU-HOLE	NICKEL	ALUMINUM	TBD	2302735-3
Au	THREADED INSERT	NICKEL	ALUMINUM	TBD	2302735-2
SnPb	THREADED INSERT	NICKEL	ALUMINUM	TBD	2302735-1
CONTACT TAIL PLATING	MOUNTING STYLE	SHELL PLATING	SHELL MATERIAL	MICRODOT PART NO	PART NO

- △ MATERIAL:
SHELL: SEE TABLE
CONTACT: COPPER ALLOY
INSULATOR: THERMOPLASTIC; COLOR: BLACK
LEAD ORGANIZER: THERMOPLASTIC; COLOR: BLACK
OPTIONAL HARDWARE: STAINLESS STEEL
- △ CONTACT FINISH:
MATING AREA: GOLD 50μ" [1.27μm] Au MIN OVER 30μ" [0.76μm] Ni MIN.
COMPLIANT P/N AREA: 15μ" [0.51μm] MIN BRIGHT SnPb OVER 50μ" [1.27μm] MIN Ni.
- △ REFERENCE APPLICATION SPEC 114-163000 FOR RECOMMENDED PCB LAYOUT, PLATED THROUGH HOLE DIAMETER AND PLATING THICKNESS. DATUMS AND BASIC DIMENSIONS ESTABLISHED BY CUSTOMER.
- △ POSITION 1 SHALL BE INDICATED BY AN IDENTIFIABLE MARK, LOCATED APPROXIMATELY AS SHOWN ON THE POSITION 1 SIDE OF THE CONNECTOR FLANGE. THIS MARK SHALL BE INCLUDED AS PART OF THE PART MARKING INFORMATION.
- 5. ALL DIMENSIONS AND REQUIREMENTS ARE PER MIL-DTL-83513/28 (EXCEPT COMPLIANT PINS & PART MARKING).
- △ THREADED INSERT AND JACK POST 2-56 UNC 2-B CONFIGURATION OPTIONAL.
- △ CONTACT FINISH:
MATING AREA: GOLD 50μ" [1.27μm] Au MIN OVER 30μ" [0.76μm] Ni MIN.
COMPLIANT P/N AREA: 15μ" [0.51μm] MIN Au OVER 50μ" [1.27μm] MIN Ni.

THIS PRINT IS **PRELIMINARY**
UNQUALIFIED PRODUCT
CONTACT PRODUCT ENGINEERING
BEFORE USING THIS PRINT

THIS DRAWING IS A CONTROLLED DOCUMENT.
DIMENSIONS: INCH (mm)
MATERIAL: SEE TABLE

REV	DATE	BY	CHK	APPD
1	24JUN2016	J. BELACK		
2	24JUN2016	T. ANNIS		
3	24JUN2016	T. ANNIS		

PRODUCT SPEC: 108-163000
APPLICATION SPEC: 114-163000
WEIGHT: -
FINISH: -
SCALE: 6:1

RECEPTACLE ASSY, VERTICAL, 2 ROW, 9 POSITION, MICRODOT PRESS-FIT
SITE: CAE CODE: DRAWING NO: A0
REV: 1

STE TE Connectivity