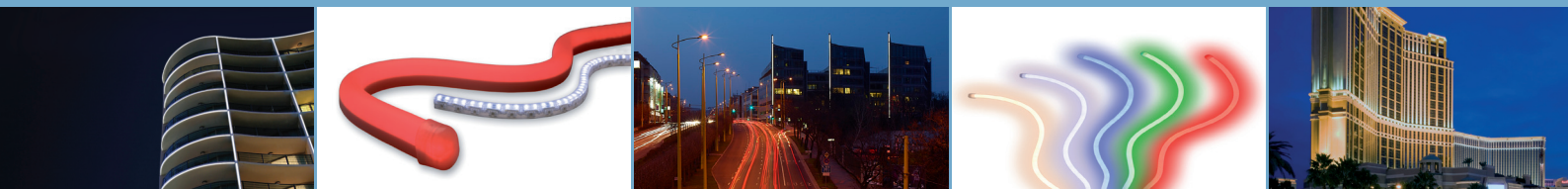


# Tetra<sup>®</sup> Contour

## LED ARCHITECTURAL SERIES



Tetra Contour is comprised of a flexible LED light engine and a rigid, optically diffused light guide that can be heat formed to fit a variety of architectural needs. With a variety of colors to choose from, designers can mix-n-match components to create bold designs and attractive accent lighting without the typical worries of working with fragile neon glass.

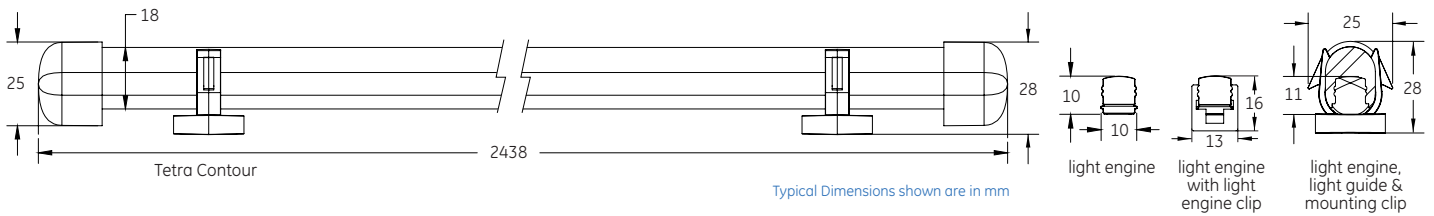
Tetra Contour is ideal for border lighting, interior art, cove and accent lighting

### Features & Benefits

- Up to 40% more energy efficient than neon
- Low-voltage 24VDC system
- Dimmable with GE 0-10V Dimming Driver or GE Dimming Module and compatible dimming controller
- Contains no lead, mercury or glass. RoHS compliant
- Long rated life of 50,000 hours
- Multiple ANSI bin color temperatures: red, green, blue, white & warm white
- Light guide colors: red, green, blue, white & clear
- 5 years warranty
- IP66 system rating with light guide

a product of  
**ecomagination<sup>SM</sup>**





## Performance Data

### Bulk pack

Product Description Code	Code	Colour	Wavelength/ Colour Temp	Viewing Angle (light engine)	Viewing Angle* (light engine w/ light guide)	Lumens per metre (light engine)	Lumens per metre (light engine w/ light guide)	Watts per metre (light engine)	Watts per metre (system)	EEC	Energy Consumption (kWh/1000h)	Pack Qty
75481	GERDXNLE1-A	Red	625nm	110	330	194	154	10.63	12.50	C	25.95	12/PK
75484	GGLXNLE1-A	Green	532nm	110	330	331	180	9.45	11.12	B	23.06	6/PK
75485	GEBLXNLE1-A	Blue	467nm	110	330	75	62	9.45	11.12	N/A	N/A	6/PK
75487	GEWWXNLE1-27K-A	White	2700K	110	330	351	230	9.45	11.12	B	23.06	6/PK
75488	GEWWXNLE1-30K-A	White	3000K	110	330	384	249	9.45	11.12	B	23.06	6/PK
75489	GEWWXNLE1-35K-A	White	3500K	110	330	410	266	9.45	11.12	B	23.06	6/PK
75490	GEWWXNLE1-40K-A	White	4000K	110	330	430	279	9.45	11.12	B	23.06	6/PK
75493	GEWHXNLE1-50K-A	White	5000K	110	330	512	331	9.45	11.12	B	23.06	6/PK
75486	GEWHXNLE1-65K-A	White	6500K	110	330	472	308	9.45	11.12	B	23.06	6/PK

Lumen values are typical. Allow +/- 15% for binning tolerance.

\* Clear light guide viewing angle is 140°

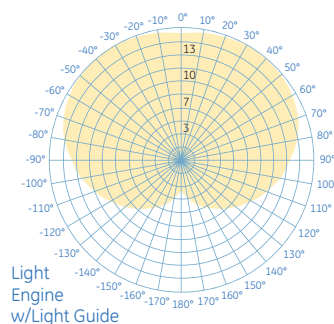
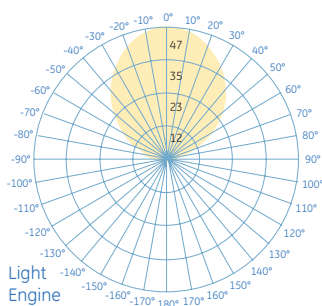
### Single pack

Product Description Code	Code	Colour	Wavelength/ Colour Temp	Viewing Angle (light engine)	Viewing Angle* (light engine w/ light guide)	Lumens per metre (light engine)	Lumens per metre (light engine w/ light guide)	Watts per metre (light engine)	Watts per metre (system)	EEC	Energy Consumption (kWh/1000h)	Pack Qty
62500	RP GERDXNLE1-A	Red	625nm	110	330	194	154	10.63	12.50	C	25.94	1/PK
62502	RP GGLXNLE1-A	Green	532nm	110	330	331	180	9.45	11.12	B	23.06	1/PK
62503	RP GEBLXNLE1-A	Blue	467nm	110	330	75	62	9.45	11.12	N/A	N/A	1/PK
62488	RP GEWWXNLE1-27K-A	White	2700K	110	330	351	230	9.45	11.12	B	23.06	1/PK
62489	RP GEWWXNLE1-30K-A	White	3000K	110	330	384	249	9.45	11.12	B	23.06	1/PK
62491	RP GEWWXNLE1-35K-A	White	3500K	110	330	410	266	9.45	11.12	B	23.06	1/PK
62490	RP GEWWXNLE1-40K-A	White	4000K	110	330	430	279	9.45	11.12	B	23.06	1/PK
62492	RP GEWHXNLE1-50K-A	White	5000K	110	330	512	331	9.45	11.12	B	23.06	1/PK
62493	RP GEWHXNLE1-65K-A	White	6500K	110	330	472	308	9.45	11.12	B	23.06	1/PK

Lumen values are typical. Allow +/- 15% for binning tolerance.

\* Clear light guide viewing angle is 140°

## Light Output

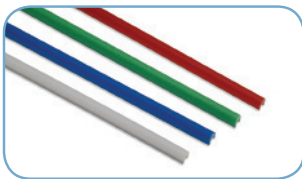


Candela (Cd) measurements taken at 6500K

IES and LDT files can be downloaded at [www.gelighting.com/eu/led](http://www.gelighting.com/eu/led)

Product Code	Product Description	Description	Colour	Quantity
75529	GERDXNLG15	Tetra Contour Light Guide (2.44m)	Red	12/PK
75531	GERDXNLGEC15	Tetra Contour Light Guide End Cap	Red	20/PK
75330	GERDXNLGC15	Tetra Contour Light Guide Connector	Red	20/PK
75495	GERDXNLGI15	Tetra Contour Light Guide 90° Inside Corner	Red	20/PK
75469	GERDXNLGO15	Tetra Contour Light Guide 90° Outside Corner	Red	20/PK
75497	GERDXNLGP15	Tetra Contour Light Guide 90° Planar Corner	Red	20/PK
75521	GEGLXNLG15	Tetra Contour Light Guide (2.44m)	Green	12/PK
75523	GEGLXNLGEC15	Tetra Contour Light Guide End Cap	Green	20/PK
75522	GECLXNLGC15	Tetra Contour Light Guide Connector	Green	20/PK
75505	GEGLXNLGI15	Tetra Contour Light Guide 90° Inside Corner	Green	20/PK
75503	GEGLXNLGO15	Tetra Contour Light Guide 90° Outside Corner	Green	20/PK
75502	GEGLXNLGP15	Tetra Contour Light Guide 90° Planar Corner	Green	20/PK
75526	GEBLXNLG15	Tetra Contour Light Guide (2.44m)	Blue	12/PK
75535	GEBLXNLGEC15	Tetra Contour Light Guide End Cap	Blue	20/PK
75527	GEBLXNLGC15	Tetra Contour Light Guide Connector	Blue	20/PK
75500	GEBLXNLGI15	Tetra Contour Light Guide 90° Inside Corner	Blue	20/PK
75501	GEBLXNLGO15	Tetra Contour Light Guide 90° Outside Corner	Blue	20/PK
75504	GEBLXNLGP15	Tetra Contour Light Guide 90° Planar Corner	Blue	20/PK
75541	GEXNLG15	Tetra Contour Light Guide (2.44m)	White	12/PK
75532	GEXNLGEC15	Tetra Contour Light Guide End Cap	White	20/PK
75533	GEXNLGC15	Tetra Contour Light Guide Connector	White	20/PK
75507	GEXNLGI15	Tetra Contour Light Guide 90° Inside Corner	White	20/PK
75499	GEXNLGO15	Tetra Contour Light Guide 90° Outside Corner	White	20/PK
75511	GEXNLGP15	Tetra Contour Light Guide 90° Planar Corner	White	20/PK
62186	GECRXNLG15	Tetra Contour Clear Light Guide (2.44m)	Clear	12/PK

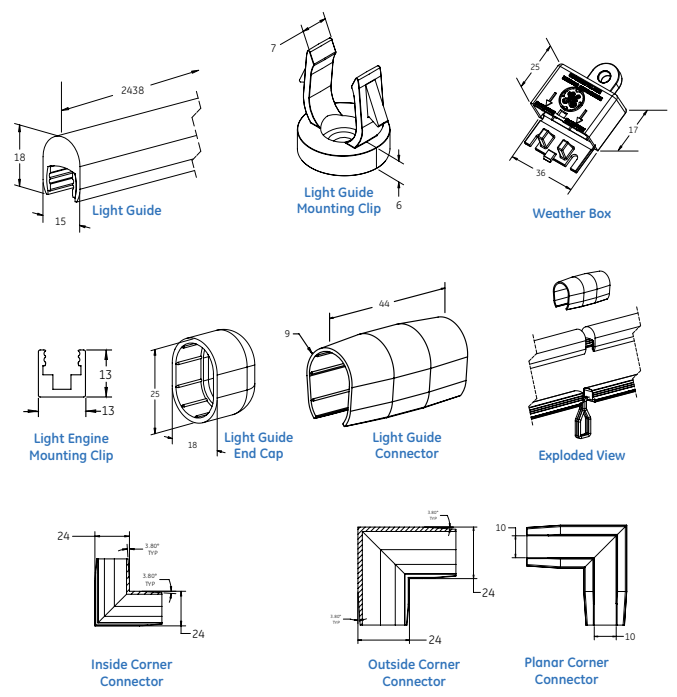
Tetra Contour Light Guide



Light Guide End Caps



Product Illustrations



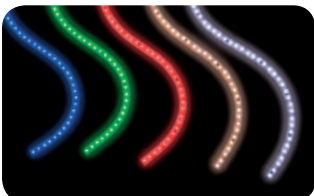
Light Guide Connectors



Light Guide Corners



Tetra Contour Light Engine



Tetra Contour System



Product Code	Product Description	Description	Pack Quantity
74917	GE020/G/V24T1-B	LED Driver: Input: 90-264VAC, Output: 24VDC/20W	1/PK
74915	GE080/G/V24T1-A	LED Driver: Input: 108-264VAC, Output: 24VDC/80W	1/PK
74916	GE100/MV/V24T1-A	LED Driver: Input Voltage: 108-305VAC, Output 24VDC/100W	1/PK
62189	GE180/MV/V24T1-C	LED Driver: Input Voltage: 90-305VAC, Output 24VDC/180W	1/PK
79045	GE080/MV/D24T1-A	0-10V Dimming LED Driver: Input Voltage: 90-305VAC, Output 24VDC/80W	1/PK
75612	GEDM1-A	0-10V Dimming Module; use with non-dimming GE LED Driver	1/PK
75514	9409	1 Spool 152.4m 18 AWG Supply Wire (0.82 sq. mm)	1/PK
75494	GEXNWB2	Weather Box	20/PK
75537	GEXNBA	Tetra Contour Silicone Bend-Aid (Reusable), 406mm	12/PK
75520	GEXNMC15	Tetra Contour Light Guide Mounting Clip	50/PK
75498	GEXNMCAC	Tetra Contour Light Engine Mounting Clip	20/PK

LED Drivers



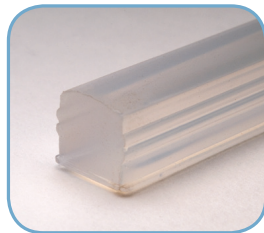
Supply Wire



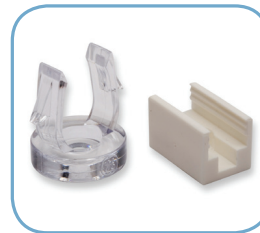
Weather Box



Light Guide Bend-Aid



Mounting Clips



Technical Specifications

Specification Item	Specification
Module Dimensions:	10mm x 10mm x 413mm
GE LED Drivers	<b>74917</b> (GE020/G/V24T1-B), <b>74915</b> (GE080/G/V24T1-A), <b>74916</b> (GE100/MV/V24T1-A), <b>62189</b> (GE180/MV/V24T1-C) and <b>79045</b> (GE080/MV/D24T1-A) , 0-10V dimming
Operating Voltage	24 VDC
Minimum Loading	<b>74917, 74915, 74916, 62189 &amp; 79045</b> : 0.20m
Maximum Loading	<b>74917</b> : 1.83 m <b>74915 &amp; 79045</b> : 7.32 m <b>74916</b> : 9.14 m <b>62189</b> : 8.23 m per Bank/ 16.46 m per Driver
Remote Mounting	Standard length of 0.3-9.14m with 18AWG (0.82mm <sup>2</sup> ) supply wire; for greater lengths refer to the installation instructions.
Ambient Temperature	-40°C to +55°C
Limited Warranty	5 years
IP Rating	Light Engine with Light Guide: IP66 (Dry, damp or wet location rated) Light Engine without Light Guide: IP52 (Dry or damp location rated)

System Certifications



This product is intended solely for the use of non-residential architecture lighting and is not intended for use in any other applications.