

## Switching Regulator Series

# 1ch Buck-Boost DC/DC Converter BD8306MUV EVK

**BD8306MUV-EVK-001 (3.7V→3.3V, 1A)**

## Introduction

This user's guide will provide the steps necessary to operate and evaluate the BD8306MUV Buck-Boost DC/DC Converter. Component selection, operating procedures and application data are included in this document.

## Description

BD8306MUV-EVK-001 uses ROHM's highly-efficient Buck-Boost DC/DC Converter IC BD8306MUV and outputs 3.3V from 2.8V to 5.5V input voltage with one coil. This IC adopts the original Buck-Boost drive system and creates a more efficient power supply than the conventional SEPIC-system or H-bridge system switching regulators. A fixed Soft Start circuit prevents inrush current during startup along with UVLO (Under Voltage Lock Out) and TSD (Thermal Shutdown Detection), OCP (Over Current Protection) protection circuits. The Under Voltage Lock Out and hysteresis can be set by external resistor using STB pin. STB pin allows for simple ON/OFF control of the IC to reduce standby current consumption.

## Application

- General Portable Equipment
- DSC
- DVC
- Cellular Phone
- PDA
- LED

## Operating Limits

Parameter	Min	Typ	Max	Units	Conditions
Input Voltage	2.8	3.7	5.5	V	
Output Voltage		3.3		V	
Output Current Range			1.0	A	VCC>2.8V
Operating Frequency		1.0		MHz	
UVLO Detect Voltage		1.6		V	VCC sweep down
UVLO Release Voltage		1.7		V	VCC sweep up

## EVK



Figure 1. BD8306MUV-EVK-001

## EVK Schematic

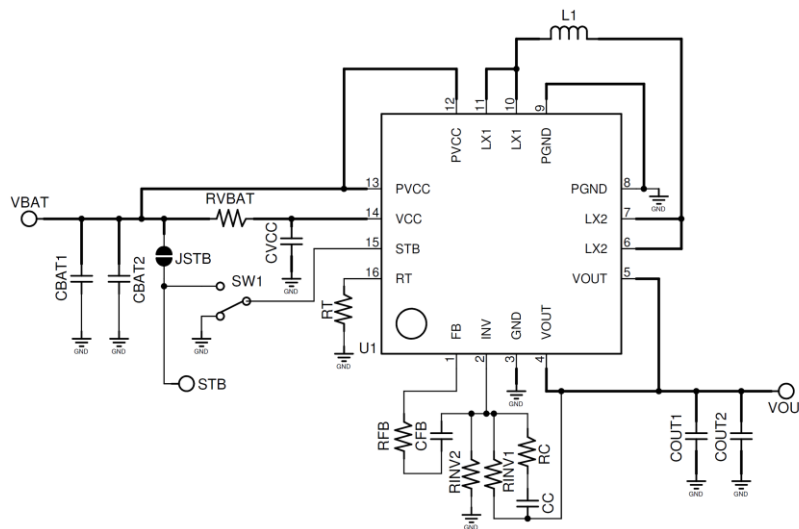


Figure 2. BD8306MUV-EVK-001 Schematic

## Operating Procedure

1. Turn off the power supply and connect power supply's GND pin to the GND3 pin of the EVK.
2. Connect the power supply's VCC pin to the VBAT pin of the EVK.
3. Connect the jumper of SW1 to the left short position. (The VBAT pin input voltage is input to the STB pin.)
4. Check if the electronic load is turned off and connect the electronic load to the VOUT pin and the GND2 pin of the EVK.
5. Connect the voltmeter to the VOUT pin and the GND2 pin of the EVK.
6. Turn on the power supply and check if the measured value of the voltmeter is 3.3V.
7. Turn on the electronic load.

*Notes: The board does not support hot plugging protection. Do not perform hot plugging on this board.*

## SW Condition Table

Table 1. SW1 Condition Table

Conduction	Content
Left short	VBAT pin and STB pin are short-circuited
Right short	GND and STB pin are short-circuited

## BOM

Table 2. Bill of Materials

No.	Value	Description	Part No.	Manufacturer
<b>IC</b>				
U1	-	Buck-Boost DC/DC	BD8306MUV	ROHM
<b>Capacitor</b>				
CBAT1	10 $\mu$ F	Capacitor, Chip, 10V, B	-	-
CBAT2	-	Not installed	-	-
COUT1	10 $\mu$ F	Capacitor, Chip, 10V, B	-	-
COUT2	-	Not installed	-	-
CC	120pF	Capacitor, Chip, 50V, CH	-	-
CFB	2200pF	Capacitor, Chip, 50V, B	-	-
CVCC	1 $\mu$ F	Capacitor, Chip, 50V, B	-	-
<b>Resistor</b>				
RC	4.7k $\Omega$	Resistor, Chip, 50V, 0.063W, $\pm$ 1%	-	-
RFB	4.7k $\Omega$	Resistor, Chip, 50V, 0.063W, $\pm$ 1%	-	-
RINV1	56k $\Omega$	Resistor, Chip, 50V, 0.063W, $\pm$ 1%	-	-
RINV2	10k $\Omega$	Resistor, Chip, 50V, 0.063W, $\pm$ 1%	-	-
RT	39k $\Omega$	Resistor, Chip, 50V, 0.063W, $\pm$ 1%	-	-
RVBAT	Short	-	-	-
<b>Inductor</b>				
L1	4.7 $\mu$ H	Inductor, 1.35A	1231AS-H-4R7M	Murata
<b>Switch</b>				
SW1	-	Pin header, 2.54mm x3contacts	61300311121	Wurth Elektronik

### Board Layout

EVK PCB information

Number of Layers	Material	Board Size	Copper Thickness
4	FR-4	40mm x 40mm x 1.6mm	1oz (35μm)

Followings are the layout of BD8306MUV-EVK-001.

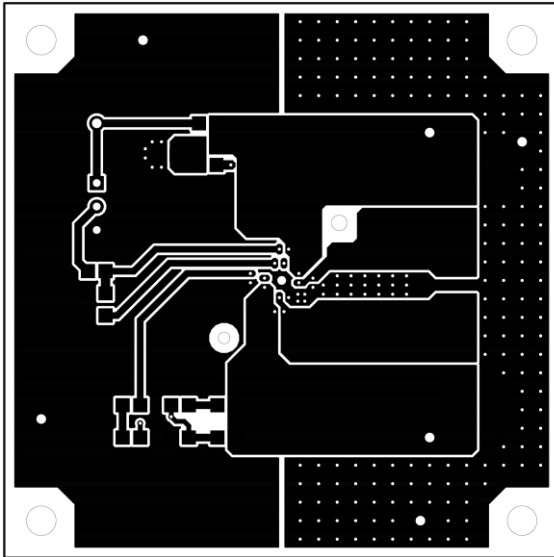


Figure 3. Top Layer Layout  
(Top View)

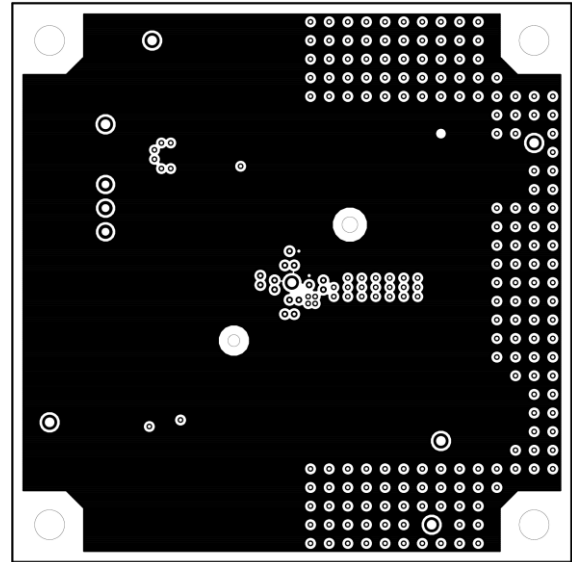


Figure 4. Middle1 Layer Layout  
(Top View)

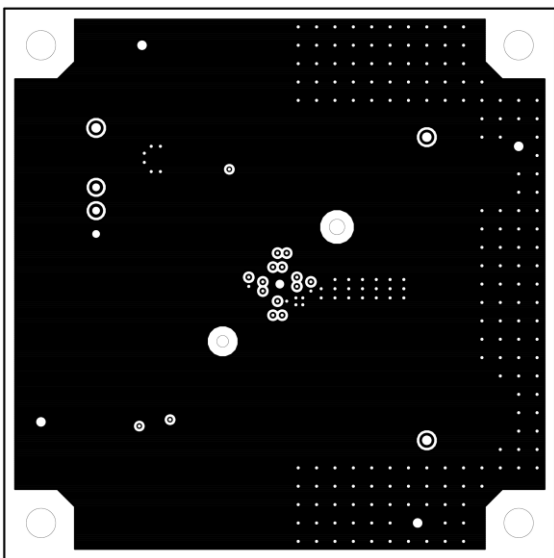


Figure 5. Middle2 Layer Layout  
(Top View)

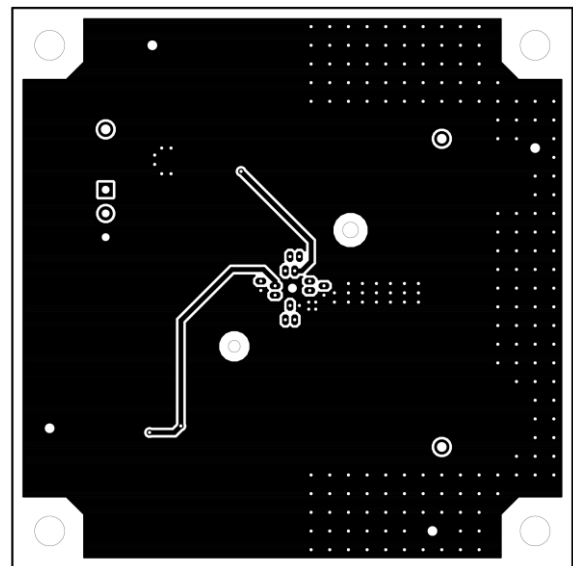


Figure 6. Bottom Layer Layout  
(Top View)

Reference Application Data

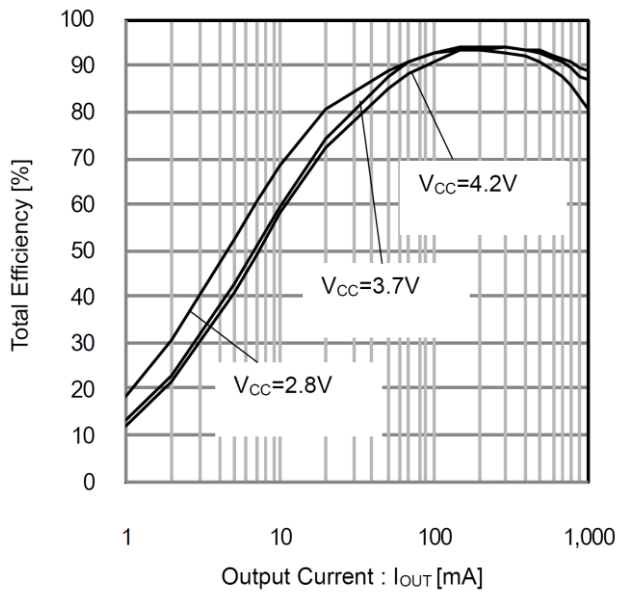


Figure 7. Total Efficiency vs Output Current (Power Conversion Efficiency)

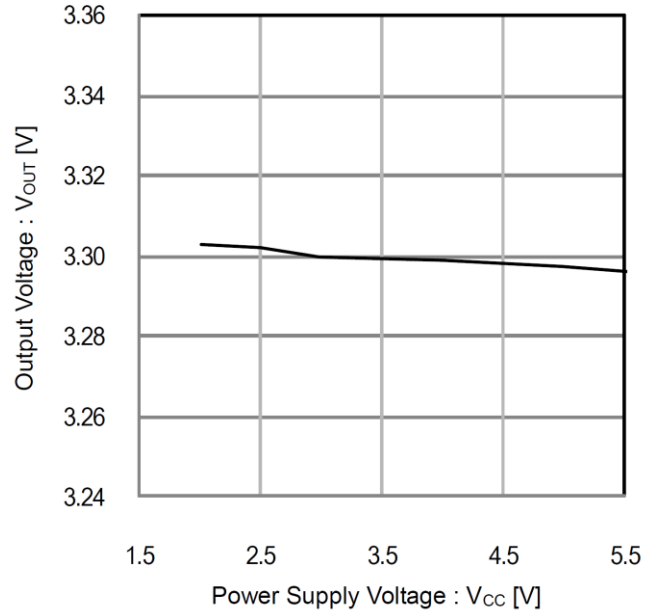


Figure 8. Output Voltage vs Power Supply Voltage (Output Current = 500mA)

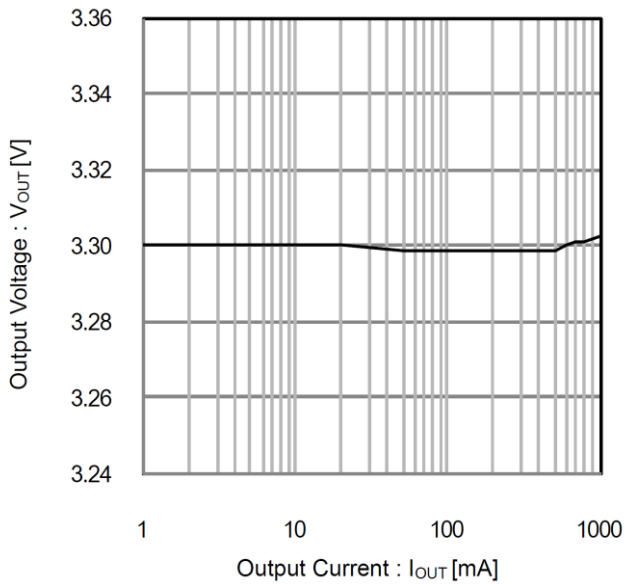


Figure 9. Output Voltage vs Output Current

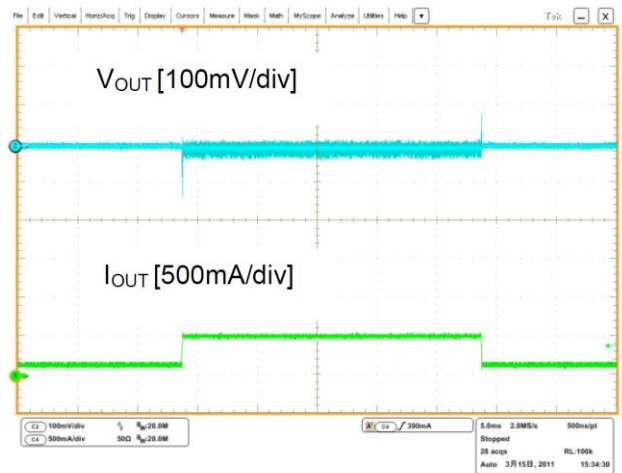


Figure 10. Output Current Response (Output Current = 100mA ↔ 500mA 5msec/div)

**Revision History**

Date	Revision Number	Description
22. Jun. 2020	001	Initial release

## Notes

- 1) The information contained herein is subject to change without notice.
- 2) Before you use our Products, please contact our sales representative and verify the latest specifications :
- 3) Although ROHM is continuously working to improve product reliability and quality, semiconductors can break down and malfunction due to various factors.  
Therefore, in order to prevent personal injury or fire arising from failure, please take safety measures such as complying with the derating characteristics, implementing redundant and fire prevention designs, and utilizing backups and fail-safe procedures. ROHM shall have no responsibility for any damages arising out of the use of our Products beyond the rating specified by ROHM.
- 4) Examples of application circuits, circuit constants and any other information contained herein are provided only to illustrate the standard usage and operations of the Products. The peripheral conditions must be taken into account when designing circuits for mass production.
- 5) The technical information specified herein is intended only to show the typical functions of and examples of application circuits for the Products. ROHM does not grant you, explicitly or implicitly, any license to use or exercise intellectual property or other rights held by ROHM or any other parties. ROHM shall have no responsibility whatsoever for any dispute arising out of the use of such technical information.
- 6) The Products specified in this document are not designed to be radiation tolerant.
- 7) For use of our Products in applications requiring a high degree of reliability (as exemplified below), please contact and consult with a ROHM representative : transportation equipment (i.e. cars, ships, trains), primary communication equipment, traffic lights, fire/crime prevention, safety equipment, medical systems, servers, solar cells, and power transmission systems.
- 8) Do not use our Products in applications requiring extremely high reliability, such as aerospace equipment, nuclear power control systems, and submarine repeaters.
- 9) ROHM shall have no responsibility for any damages or injury arising from non-compliance with the recommended usage conditions and specifications contained herein.
- 10) ROHM has used reasonable care to ensure the accuracy of the information contained in this document. However, ROHM does not warrants that such information is error-free, and ROHM shall have no responsibility for any damages arising from any inaccuracy or misprint of such information.
- 11) Please use the Products in accordance with any applicable environmental laws and regulations, such as the RoHS Directive. For more details, including RoHS compatibility, please contact a ROHM sales office. ROHM shall have no responsibility for any damages or losses resulting non-compliance with any applicable laws or regulations.
- 12) When providing our Products and technologies contained in this document to other countries, you must abide by the procedures and provisions stipulated in all applicable export laws and regulations, including without limitation the US Export Administration Regulations and the Foreign Exchange and Foreign Trade Act.
- 13) This document, in part or in whole, may not be reprinted or reproduced without prior consent of ROHM.



Thank you for your accessing to ROHM product informations.  
More detail product informations and catalogs are available, please contact us.

**ROHM Customer Support System**

<http://www.rohm.com/contact/>