

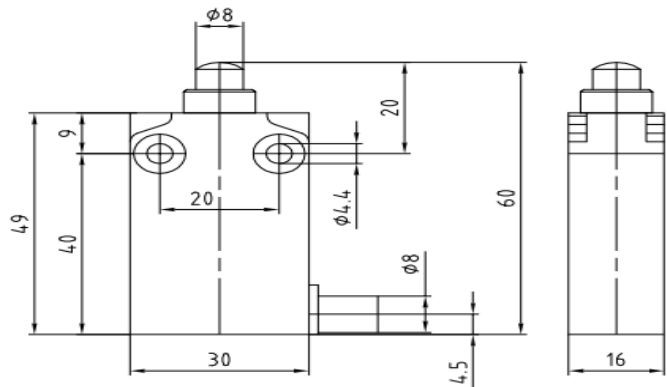
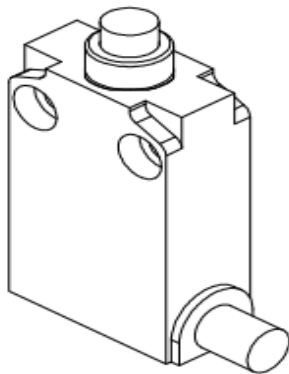


Datasheet

Limit Switch

ENGLISH

RS Stock number 902-6925



Description:

Pre-wired, Metal Casing IP67, 30mm width
 PVC Cable 5x0.75mm², 1mt length
 Plain plunger
 Z : Snap action contacts (1NO+1NC)

Specification:

| Standards | | Metal Casing | |
|---|------------------|--|---------------------------|
| Certifications - Approvals | | Devices conform with international IEC 947-5-1 and European EN 60 947-5-1 standards | |
| Air temperature near the device | | UL (upon request) - IMQ | |
| - during operation | °C | - 25 ... + 70 | |
| - for storage | °C | - 40 ... + 70 | |
| Mounting positions | | All positions are authorized | |
| Protection against electrical shocks (according to IEC 536) | | Class I | |
| Degree of protection (according to IEC 529 and EN 60 529) | | IP 67 | |
| Degree of protection (according to UL50) | | Type 4 - 4X - 6 enclosure ("outdoor use - raintight - watertight corrosion resistant") | |
| Rated insulation voltage U _i | | 400 V (degree of pollution 3) (250 V for M12 connector) B 300, R 300 | |
| - according to IEC 947-1 and EN 60-947-1 | | | |
| - according to UL 508 and CSA C22-2 n° 14 | | | |
| Conventional free air thermal current I _{th} | A | 10 (4A for M12 connector) | |
| (according to IEC 947-5-1 and EN 60 947-5-1) θ < 40 °C | | | |
| Short-circuit protection | A | 10 (4A for M12 connector) | |
| U _e < 500 V a.c. - gG (gl) type fuses | | | |
| Rated operational current | | | |
| I _e / AC-15 (according to IEC 947-5-1) | 24 V - 50/60 Hz | A | 10 (4A for M12 connector) |
| | 240 V - 50/60 Hz | A | 3 |
| I _e / DC-13 (according to IEC 947-5-1) | 24 V - d.c. | A | 2.8 |
| | 125 V - d.c. | A | 0.22 |
| | 250 V - d.c. | A | 0.27 |
| | | | |
| Switching frequency | Cycles/h | 3600 | |
| Load factor | | 0.5 | |
| Resistance between contacts | mΩ | < 25 | |
| Mechanical durability | | 10 Millions of operations | |

For the complete list of approved products contact our technical department.

IMQ listed values

RS, Professionally Approved Products, gives you professional quality parts across all products categories. Our range has been testified by engineers as giving comparable quality to that of the leading brands without paying a premium price.