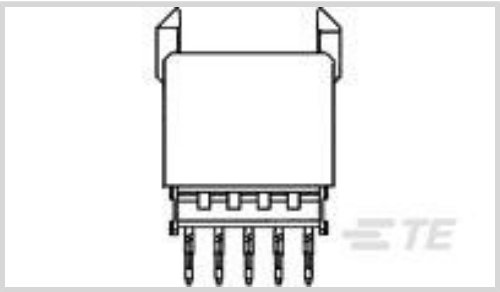




Connectors > PCB Connectors > Backplane Connectors > Hard Metric Backplane Connectors



PCB Connector Type: **PCB Mount Receptacle**

Data Rate: **≤1 Gb/s**

Number of Columns: **25**

Number of Rows: **5**

Number of Positions: **125**

Features

Product Type Features

Connector & Contact Terminates To	Printed Circuit Board
Backplane Interface Type	2mm HM
PCB Connector Type	PCB Mount Receptacle

Configuration Features

Number of Columns	25
Number of Rows	5
Number of Positions	125
PCB Mount Orientation	Vertical

Signal Characteristics

Crosstalk Version	Standard
Data Rate	≤1 Gb/s

Body Features

Primary Product Color	Gray
-----------------------	------

Contact Features

Contact Underplating Material	Nickel
Contact Mating Area Length	3.3 mm
Contact Base Material	Phosphor Bronze
CompactPCI Designation	None
PCB Contact Termination Area Plating Material	Tin-Lead



Contact Type	Socket
Feedthrough Post Length	3.7 mm
Contact Mating Area Plating Material	Gold (Au)
Contact Mating Area Plating Material Thickness	.76 µm[30 µin]

Housing Features

Housing Material	Polyester - GF
Centerline (Pitch)	2 mm

Dimensions

Backplane Module Length	50 mm
-------------------------	-------

Operation/Application

Shielded	No
----------	----

Industry Standards

UL Flammability Rating	UL 94V-0
------------------------	----------

Packaging Features

Packaging Quantity	11
Packaging Method	Tube

Product Compliance

For compliance documentation, visit the product page on TE.com>

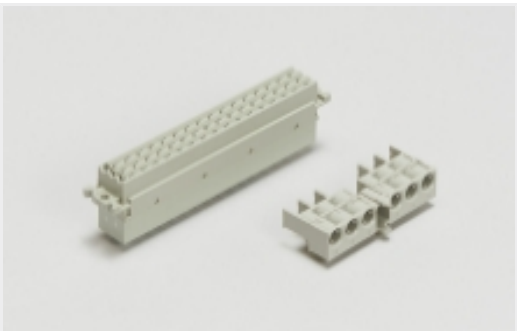
EU RoHS Directive 2011/65/EU	Not Compliant
EU ELV Directive 2000/53/EC	Compliant with Exemptions
China RoHS 2 Directive MIIT Order No 32, 2016	Restricted Materials Above Threshold
EU REACH Regulation (EC) No. 1907/2006	Current ECHA Candidate List: JAN 2025 (247) Candidate List Declared Against: JUNE 2024 (241) SVHC > Threshold: Pb (13% in Component Part) Article Safe Usage Statements: Do not eat, drink or smoke when using this product. Wash thoroughly after handling. Recycle if possible and dispose of the article by following all applicable governmental regulations relevant to your geographic location.
Halogen Content	Not Low Halogen - contains Br or Cl > 900 ppm.
Solder Process Capability	Not applicable for solder process capability

Product Compliance Disclaimer

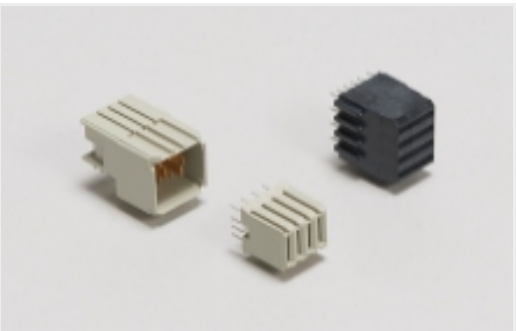


This information is provided based on reasonable inquiry of our suppliers and represents our current actual knowledge based on the information they provided. This information is subject to change. The part numbers that TE has identified as EU RoHS compliant have a maximum concentration of 0.1% by weight in homogenous materials for lead, hexavalent chromium, mercury, PBB, PBDE, DBP, BBP, DEHP, DIBP, and 0.01% for cadmium, or qualify for an exemption to these limits as defined in the Annexes of Directive 2011/65/EU (RoHS2). Finished electrical and electronic equipment products will be CE marked as required by Directive 2011/65/EU. Components may not be CE marked. Additionally, the part numbers that TE has identified as EU ELV compliant have a maximum concentration of 0.1% by weight in homogenous materials for lead, hexavalent chromium, and mercury, and 0.01% for cadmium, or qualify for an exemption to these limits as defined in the Annexes of Directive 2000/53/EC (ELV). Regarding the REACH Regulation, the information TE provides on SVHC in articles for this part number is based on the latest European Chemicals Agency (ECHA) 'Guidance on requirements for substances in articles' posted at this URL: <https://echa.europa.eu/guidance-documents/guidance-on-reach>

Also in the Series | Z-PACK 2mm HM



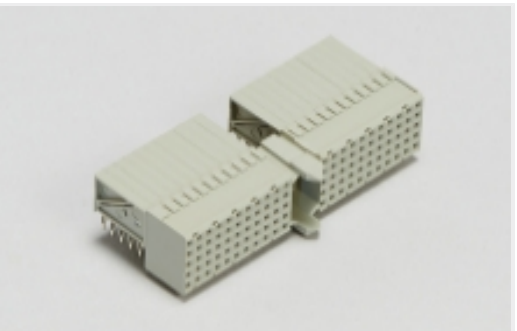
Backplane Connector Housings(4)



Backplane Power Connectors(1)



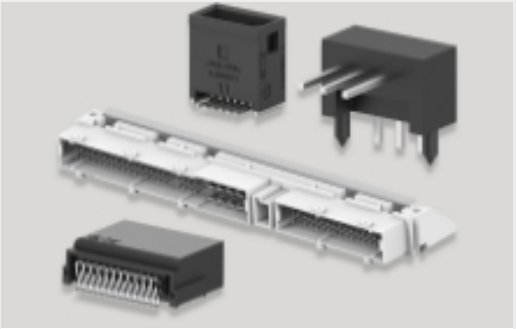
Connector Caps & Covers(62)



Hard Metric Backplane Connectors (266)



Insertion & Extraction Tools(2)

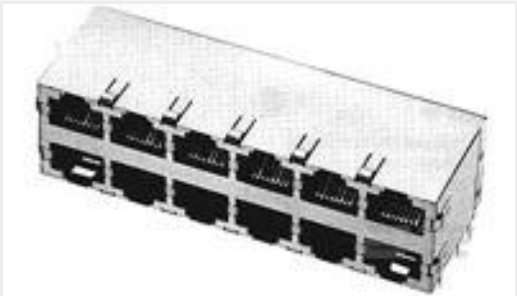


PCB Headers & Receptacles(46)

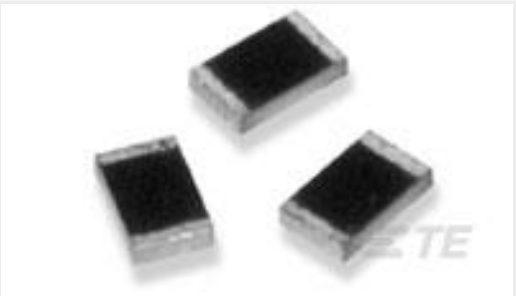


Rectangular Power Connectors(46)

Customers Also Bought



TE Part #6368296-1
ASSY,SHLD,2X8,STK MJ,WAVE PNL



TE Part #4-1879269-9
RP 2A 32R4 0.1% 15PPM CUT LENGTH



TE Part #3-338088-3
8/8 INV.MOD.JACK LOW HALOGEN



TE Part #3-1393789-9
V23079A2011B301



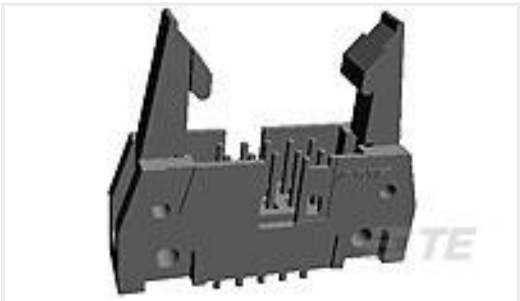
TE Part #84534-6
1.25MM FFC POST PLATED V 6P



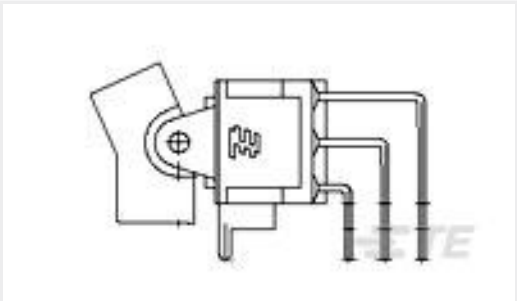
TE Part #6116353-8
INV MJ,1X2,PNL GRD,LED (YG/YG)



TE Part #6-147723-9
20 MODIV VRT SR SFMNT 30AU



TE Part #5746443-1
A/L UNIV HDR 10P ACT PIN LAT



TE Part #7-1571986-2
A101J1AV2Q004AM marking O -



TE Part #1241164-5
2X 5P MOD2A-P STLEI

Documents

CAD Files

Customer View Model

ENG_CVM_CVM_106774-1_G.2d_dxf.zip

English

3D PDF

3D

Customer View Model

ENG_CVM_CVM_106774-1_G.3d_igs.zip

English

Customer View Model

ENG_CVM_CVM_106774-1_G.3d_stp.zip

English

By downloading the CAD file I accept and agree to the [Terms and Conditions](#) of use.

Product Specifications

Application Specification

English

Instruction Sheets

INSERTION TOOL FOR Z-PACK 2mm HM CONN.

Japanese

Instruction Sheet (non U.S.)

Japanese