



ZEST Series

2G/3G Modem Starter Kit

Quick Start Guide

Rev 1.1

Whats in the Box?

As standard, the ZEST starter kit comes with the following*:

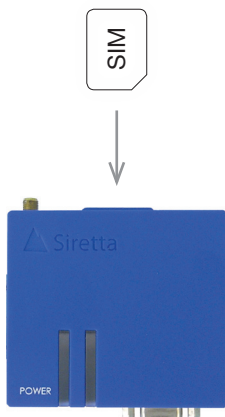
- » ZEST series modem
- » Power supply
- » Delta 1A antenna OR Mike 1A antenna
- » RS232 male to RS232 female cable
- » Quick start guide

NOTE - The ZEST modem requires a SIM card to work. If you do not have a SIM card, these can be purchased through Siretta. For more information please contact your Siretta representative or call us on +44 (0)118 976 9014.

*If you have purchased the ZEST as a standalone modem, you will need to purchase the other accessories separately from www.siretta.co.uk

Setting up the ZEST

Step 1. Insert a SIM card fully into the SIM slot. Once the SIM card has been correctly inserted, a click will be heard.

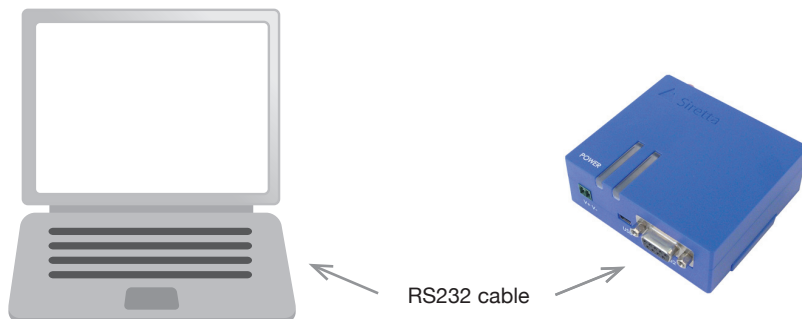


Step 2. Screw the antenna* onto the ZEST. Twist the antenna connector clock-wise until the antenna is firmly connected.



*The antenna used in this drawing may be different to the one supplied, however the application process of the antenna is the same.

Step 3. Using the supplied RS232 cable, connect the RS232 male connector into the RS232 port on the ZEST. Connect the RS232 female connector (other end of the cable) into an RS232 port on your PC.



Step 4. Open 'HyperTerminal' on your PC. You will be requested to enter the number of the COM port your are using to communicate between the ZEST and PC. Upon request, ensure the following information is inserted:

- » Bits Per Second: 115200
- » Data Bits: 8
- » Parity: None
- » Stop Bit: 1
- » Flow Control: Hardware

Step 5. Plug the power supply* into the ZEST. Ensure the mains supply is plugged into a power source and switched on. The green LED on the ZEST will light up continuously**, this indicates that power has been supplied. See table 1 below for LED indication.

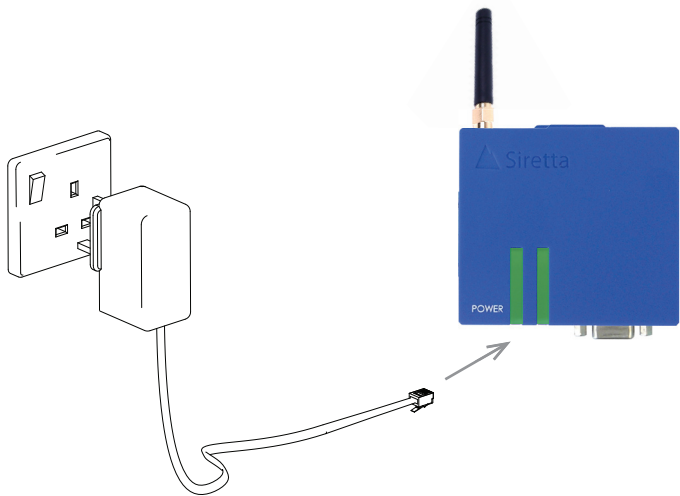


Table 2. LED status

Name	Colour	Status	Description
POWER	Green	ON	ZEST is powered on
POWER	Green	OFF	ZEST is powered off

*The power supply used in this drawing may be different to the one supplied, however the application process of the power supply is the same.

**If this step fails, please try again. If it fails a second time, please contact your Siretta representative or call us on +44 (0)118 976 9014.

Step 6. In the 'Hyperterminal' command window, type in the command:

AT<cr>

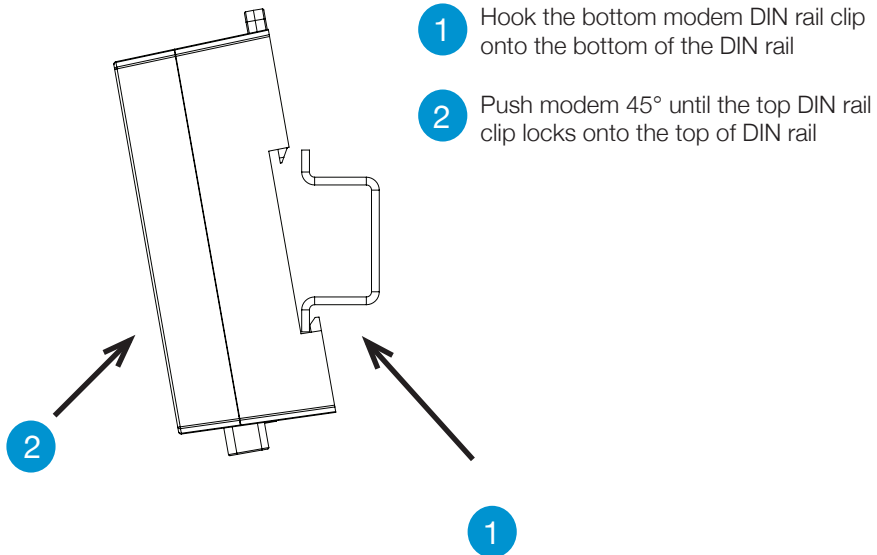
The command window will respond with:

OK

Your ZEST is now connected and ready to start communication.

Mounting the ZEST

The ZEST has an integrated DIN rail mount housing which allows the unit to connect on to the standard rail widely used for mounting industrial control equipment inside equipment racks. This has been adopted as a European (EN) and International (ISO) Standard.



Further Information

For more information when using your ZEST, a range of hardware and software manuals are available to download. You can request these from your Siretta representative, alternatively these can be download from www.siretta.co.uk



sales +44 (0)118 976 9014

fax +44 (0)118 976 9020

accounts +44 (0)118 976 9069

email sales@siretta.co.uk

www.siretta.co.uk

Basingstoke Road
Spencers Wood
Reading
Berkshire
RG7 1PW
United Kingdom

Company No. 08405712
VAT Registration No. GB163 04 0349

A member of the Olancha Group Ltd

