



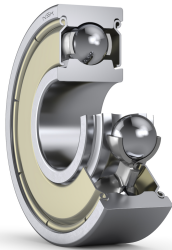
PRODUCT DATASHEET

Datasheet creation date: 2025/07/08 2:12 (UTC)



627ZZ1

Extra Small Ball Bearings and Miniature Ball Bearings Metric Series



Boundary Dimensions

d	7	mm	Bore diameter
D	22	mm	Outside diameter
B	7	mm	Width
r1 (min.)	0.3	mm	Chamfer dimension

Basic Load Ratings

Cr	3650	N	Basic dynamic load rating
C0r	1370	N	Basic static load rating

Speeds

Grease	30000	min-1	Grease lubrication
--------	-------	-------	--------------------

Abutment and Fillet Dimensions

db (max.)	10.5	mm	Diameter of shaft abutment
Db (max.)	19	mm	Diameter of housing abutment
rb (max.)	0.3	mm	Radius of shaft or housing fillet

Additional information

z	7		Number of Balls
Dw	3.969	mm	Ball Diameter

Mass

Mass approx.	0.0129	kg	Mass approx.
--------------	--------	----	--------------

