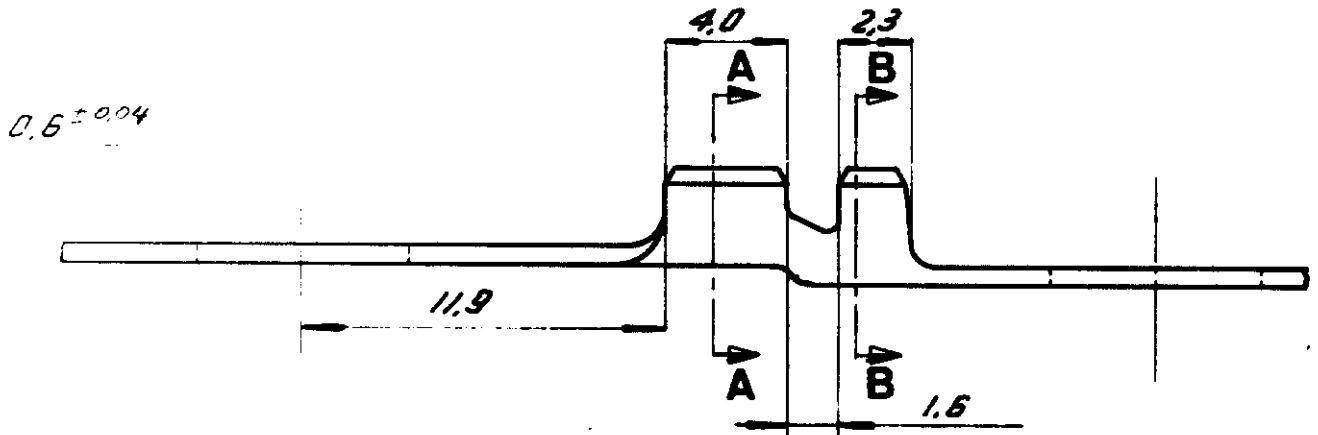
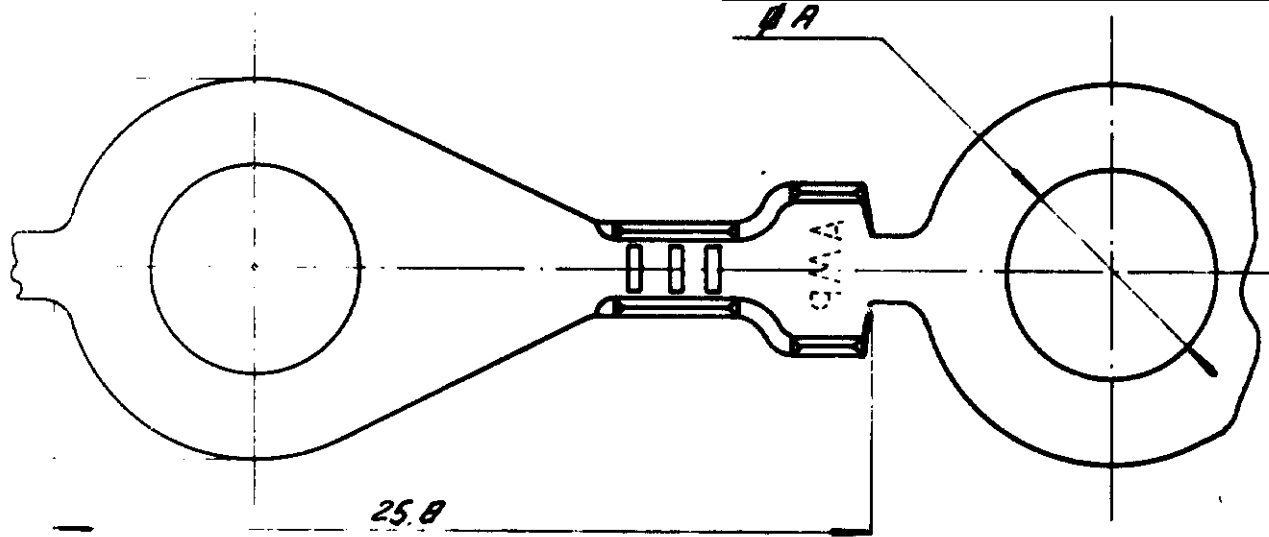


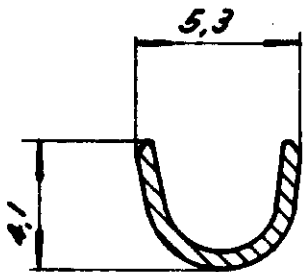
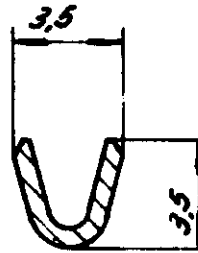
| REVISIONS | | | | |
|-----------|-----------------------|---------|-----|------|
| LTR | DESCRIPTION | DATE | DWN | APVD |
| D1 | REV PER ECO-09-026444 | 27NOV09 | KK | AEG |



REBOBINAR INTERCALANDO C/PAPEL

CA 260

2 OBSOLETE PARTS: OBSOLETE CIS STREAMLINING PER D.RENAUD/D.SINISI



| | | | | |
|-----------|-----|-----------|---|-----------|
| 626030-5 | 6.5 | LATAO | 2 | |
| 626416- | 8.3 | | | ESTANHADO |
| 626416-3 | 8.3 | | | —//— |
| 626030-4 | 6.5 | | | ESTANHADO |
| 626030-3 | 6.5 | BRONZE F. | | —//— |
| 6264162 | 8.3 | LATAO | | ESTANHADO |
| 6264161 | 8.3 | LATAO | | — — |
| 626030-2 | 6.5 | LATAO | | ESTANHADO |
| 626030-1 | 6.5 | LATAO | | — — |
| ORDER NO. | 0 A | MAT | | PLATING |

SEC A-A

SEC B-B

CUSTOMER COPY FOR REFERENCE ONLY

©1975 BY AMP BRASIL ALL RIGHTS RESERVED A-MP PRODUCTS COVERED BY PATENTS AND/OR PATENTS PENDING.



AMP DO BRASIL SP

| | | |
|--------------|--------------|-----------|
| WIRE RANGE | INSUL. RANGE | TOLERANCE |
| 0.5 - 1.5 mm | .070 - .120 | ± 0.3 |

| | | | | |
|-------|-----|------|--------|-----|
| SCALE | LOC | SIZE | NO | REV |
| 4:1 | AP | | 626030 | D1 |

NAME RING TONGUE