



PLUG - DOME

Ex db, Ex eb, Ex tb, Ex nR, IP65/66/68

for General Industrial and Hazardous Area Installations

Features and Benefits

- Precision manufactured from high quality brass (Marine Grade Electroless Nickel Plated™) available in aluminium, stainless steel 316/316L on request. (Note: Aluminium not suitable for Group I applications.)
- Used to blank off threaded entry holes.
- Dome or Hex Head Plugs may be used to blank off an unthreaded entry hole if secured in place with a locknut.



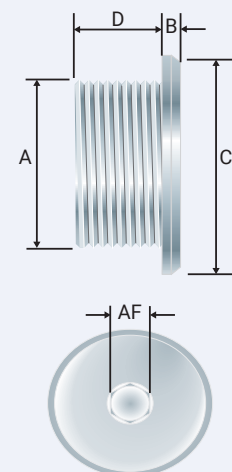
Technical Data

Type:	Stopper Plug
Material:	Brass (Marine Grade Electroless Nickel Plated™), Aluminium, Stainless Steel 316/316L
Gasket material:	Standard HDPE, Nylon, PTFE
Note:	The installer should check that the materials are suitable for the installation environment.

Standards and Certifications

Equipment Protection Levels:	IECEx/INMETRO: Ex db I Mb / Ex eb I Mb / Ex db IIC Gb / Ex eb IIC Gb / Ex ta IIIC Da / Ex nR IIC ATEX/UKEX: Ex I M2 Ex db I Mb / Ex eb I Mb, Ex II 2G 1D Ex db IIC Gb / Ex eb IIC Gb / Ex ta IIIC Da CCC: Ex db IIC Gb, Ex db I Mb, Ex eb IIC Gb, Ex eb I Mb, Ex tb IIIC Db
------------------------------	---

Conformance:	Standard:	Certificate:
IECEX	IEC 60079 Part 0, 1, 7, 15, 31	IECEX TSA 23.0024X
ATEX	EN 60079 Part 0, 1, 7, 31	CML15ATEX1040X
UKEX	BS EN 60079 Part 0, 1, 7, 31	CML 21UKEX1014X
INMETRO (Brazil)	ABNT NBR IEC 60079 Part 0,1, 7, 31	TÜV 15.0485X
CCC/CNEx (Chinese)	GB/T3836.1, 2, 3, 31-2021 CCC 2021312313000390	CNEx 21.3392X
SANS	SANS/IEC 60079 Part 0, 1, 7, 15, 31	MASC MS/23-9594X
IP66/68 - Parallel	IEC 60529	CML15Y728
IP65/66 - Tapered	IEC 60529	
IP68 - Tapered and approved grease	IEC 60529	IECEX TSA 23.0024X
Deluge Protection	DTS-01	CML 14CA370-2
Corrosion Protection	ASTM B117-11, BS EN ISO 3231	EXOVA N968667
Marine ABS	IEC 60079 Parts 0, 1, 7, 15, 31, IEC 60529	ABS 20-1952706-1-PDA
DNV	IEC 60079 Parts 0, 1, 7, IEC 60529	TAE0000010
London Underground Approval	BS EN 62444	LU 3043, LU 3044



Conditions and limitations for Safe Use - X

- An IP rating of IP66/68 is maintained for units with parallel threads when used with the supplied washer and units with tapered thread when thread sealant is conducted as indicated in IEC60079-14. Alternatively an IP65 rating is applicable.
- Operating temperature range -60°C to +95°C (HDPE gasket), -60°C to +100°C (nylon gasket) or -60°C to +160°C (PTFE gasket) applicable if gaskets are used to maintain IP65/66/68

MOFLASH [★] Product Code	Material	Metric Dimension "A"	Dimension Min "B"	Dimension Min "C"	Dimension Min "D"	Dimension A/F Min	Installation Torque Value (Nm)
50204	Brass	M20	3.0	25.0	16.0	10.0	21.0
50214	Stainless Steel	M20	3.0	25.0	16.0	10.0	21.0
50274	Brass	M25	3.0	35.0	16.0	10.0	30.0
50275	Brass	M32	3.0	42.0	16.0	10.0	42.0

All dimensions are in mm.