



EXHAUST RESTRICTOR WITH SILENCER SERIES ASN

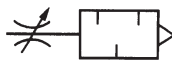
- ✓ Over 20dB sound reduction
- ✓ Cylinder speed easily set
- ✓ Retainer prevents accidental loss of needle
- ✓ Increased flow
- ✓ Increased silencing effect
- ✓ Overall length reduced

Flow Control Equipment

TECHNICAL SPECIFICATIONS

Proof pressure	1.5MPa(15.3kgf/cm ²)
Operating pressure range	0-1.0MPa
Ambient and fluid temperature	5-60°C
Number of needle rotations	8 turns

SYMBOLS



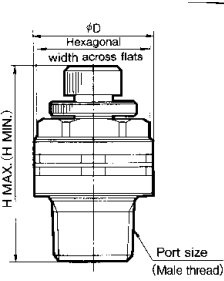
HOW TO ORDER SERIES ASN

ASN2 —

PORT SIZE

M5 ... M5x0.8
01 ... 1/8
02 ... 1/4
03 ... 3/8
04 ... 1/2

DIMENSIONS SERIES ASN



Model	Port size	ϕD	H		Hexagonal width across flats	Effective Orifice (mm ²)
			Min	Max		
ASN2-M5	M5x0.8	10	20.5	23.3	8	1.8
ASN2-01	1/8	15	30	35	12	3.6
ASN2-02	1/4	20	34.2	39.2	17	6.5
ASN2-03	3/8	25	37	42	19	16.6
ASN2-04	1/2	30	49	54	24	24.5

SPECIAL OPTION

Black body/blue bush (same dimension) order with -X35 suffix.

STOCKED PRODUCTS
FOR A LIST OF STOCKED PRODUCTS, PLEASE SEE THE CURRENT SMC PRICE LIST

NOTE: IT IS RECOMMENDED, FOR BODY PORTED VZ3000/SYJ5000 AND VZ5000/SYJ7000 VALVES WHERE ASN2 IS USED ON EXHAUST PORTS, THAT MINIATURE SERIES -M FITTINGS ARE USED ON SUPPLY PORTS