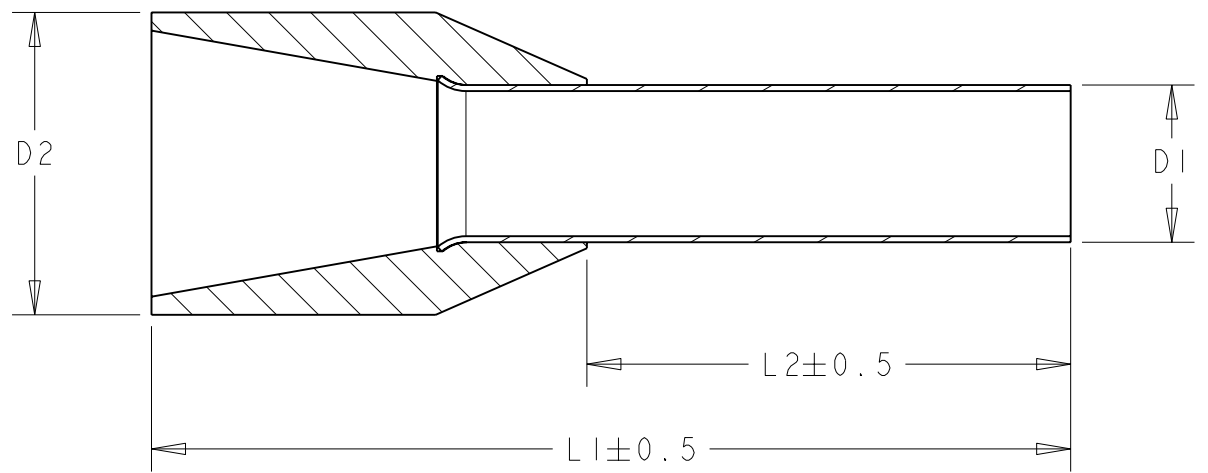


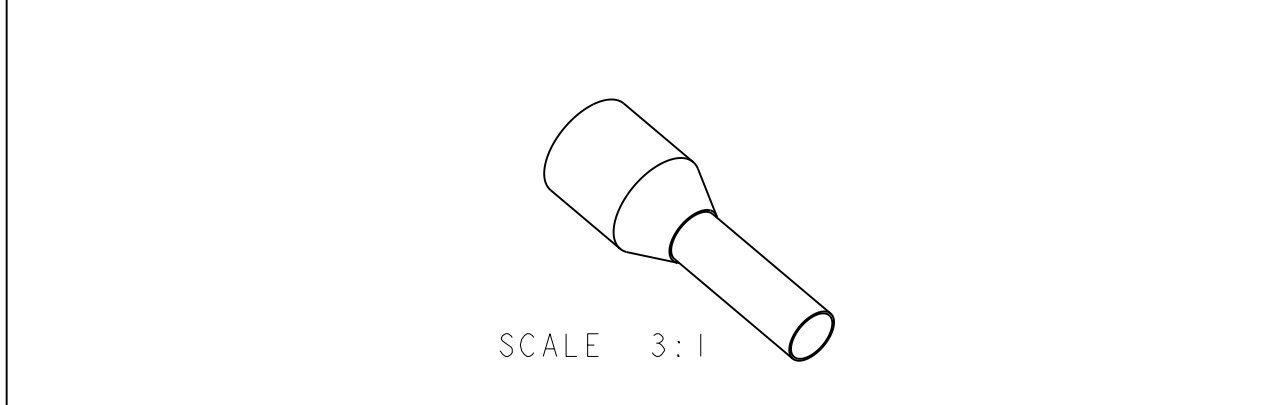
THIS DRAWING IS UNPUBLISHED. RELEASED FOR PUBLICATION ,19 .
 © COPYRIGHT 19 BY AMP INCORPORATED. ALL RIGHTS RESERVED.

LOC	DIST	REVISIONS			
P	LTR	DESCRIPTION	DATE	DWN	APVD
AL	2	A	ES00-0040-01	10JUL2001	JC JP
		AI	REVISED PER ECO-09-025714	16DEC09	KK AEG

PART NUMBER	SECTION mm2	L1	L2	D1	D2	COLOR	QTY/BAG
737730-1	0.5	12.0	6.0	1.0	2.6	WHITE	200
737730-2		14.0	8.0				
737730-3		16.0	10.0				
737731-1	0.75	12.0	6.0	1.2	2.8	GREY	200
737731-2		14.0	8.0				
737731-3		16.0	10.0				
737731-4		18.0	12.0				
737732-1	1.0	12.0	6.0	1.4	3.0	RED	200
737732-2		14.0	8.0				
737732-3		16.0	10.0				
737732-4		18.0	12.0				
737733-1	1.5	14.0	8.0	1.7	3.5	BLACK	200
737733-2		16.0	10.0				
737733-3		18.0	12.0				
OBSOLETE 737733-4		24.0	18.0				
737734-1	2.5	14.0	8.0	2.2	4.2	BLUE	100
737734-2		18.0	12.0				
OBSOLETE 737734-3		24.0	18.0				
737735-1	4.0	17.0	10.0	2.8	4.8	GREY	100
737735-2		20.0	12.0				
737735-3		26.0	18.0				
737736-1	6.0	20.0	12.0	3.5	6.3	YELLOW	100
737736-2		26.0	18.0				
737737-1	10.0	22.0	12.0	4.5	7.6	RED	50
737737-2		28.0	18.0				
737738-1	16.0	24.0	12.0	5.8	8.8	BLUE	50
737738-2		28.0	18.0				
737739-1	25.0	30.0	16.0	7.3	11.2	YELLOW	50
737739-2		30.0	18.0				
737739-3		36.0	22.0				
737740-1	35.0	30.0	16.0	8.3	12.7	RED	25
737740-2		30.0	18.0				
737740-3		39.0	25.0				
737741-1	50.0	36.0	20.0	10.3	15.0	BLUE	25
OBSOLETE 737741-2		40.0	25.0				



- | | |
|--|---|
| 1. DIMENSIONS BASED ON
DIN 46228.4 | 1. DIMENSIONES BASADAS EN
DIN 46228.4 |
| 2. COLOR BASED ON DIN 47002 | 2. COLOR BASADO EN DIN 47002 |
| 3. USE HAND TOOL 790081-1
FOR 0.5-4.0 mm2. | 3. USAR HERRAMIENTA MANUAL
790081-1 PARA 0.5-4.0mm2. |
| USE HAND TOOL 790081-2
FOR 6.0-16.0 mm2 | USAR HERRAMIENTA MANUAL
790081-2 PARA 6.0-16.0mm2. |
| 4 FINISH FOR METAL SLEEVE:
TIN | 4 ACABADO PARA EL CASQUILLO
METALICO: ESTAÑADO. |
| 5 OBSOLETE PARTS: OBSOLETE
CIS STREAMLINING PER D.RENAUD/D.SINISI | |



THIS DRAWING IS A CONTROLLED DOCUMENT FOR AMP INCORPORATED. IT IS SUBJECT TO CHANGE AND THE CONTROLLING ENGINEERING ORGANIZATION SHOULD BE CONTACTED FOR THE LATEST REVISION.		DWN F. J. CARBONELL 10JUL2001	AMP Tyco Electronics Corp, AMP España, S.A. Barcelona. Spain.
DIMENSIONS: mm		CHK J. PASCUAL 10JUL2001	
TOLERANCES UNLESS OTHERWISE SPECIFIED: 0 PLC ± 1 PLC ±0.3 2 PLC ± 3 PLC ± 4 PLC ± ANGLES ±		APVD -	NAME WIRE PIN PUNTERA
MATERIAL Cu-E PA 6.6		PRODUCT SPEC 108-22049	SIZE A3
FINISH 4		APPLICATION SPEC -	CAGE CODE 00779
		WEIGHT -	DRAWING NO G-737730
		CUSTOMER DRAWING	SCALE - SHEET 1 OF 1 REV AI