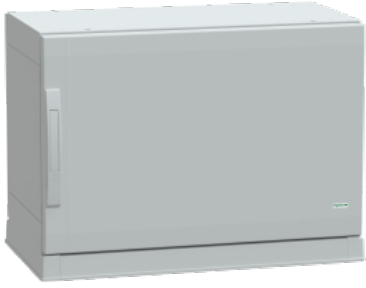


Product data sheet

Specifications



Floor standing encl.polyester vers.PLAZ w/plinth open bottom 500x750x420 IP54

NSYPLAZ574G

Main

Range	Thalassa
Product name	Thalassa PLA
Enclosure type	Multi-purpose
Product or component type	Suitable enclosure
Version	PLAZ
Nominal height	500 mm
Nominal width	750 mm
Nominal depth	420 mm
Enclosure mounting	Floor-standing
Device composition	1 top part 1 bottom part 2 side part 1 rear panel 1 door 1 plinth

Complementary

Body type	Sealed top and open bottom part assembled with side parts
Door type	Plain front
Number of doors	1 door(s)
Door opening side	Reversible (120 °)
Lock type	2 points handle lock, 5 mm double-bar
Accessibility for operation	Rear Bottom Front
Removable parts	Door by hinges Rear panel by fixing element
Material	Polyester reinforced with fibreglass
Colour	Grey (RAL 7035)
Standards	IEC 62208
Product certifications	Veritas
Electrical insulation class	Class II

Environment

IP degree of protection	IP54 conforming to IEC 60529 (plinth type open bottom)
IK degree of protection	IK10 conforming to IEC 62262 (plain door)
Fire resistance	960 °C conforming to IEC 62208
Ambient air temperature for storage	-35...90 °C

Packing Units

Unit Type of Package 1	PCE
Number of Units in Package 1	1
Package 1 Weight	25.82 kg
Package 1 Height	56.5 cm
Package 1 width	78.0 cm
Package 1 Length	45.0 cm
Unit Type of Package 2	CAR
Number of Units in Package 2	1
Package 2 Weight	25.82 kg
Package 2 Height	56.6 cm
Package 2 width	78.0 cm
Package 2 Length	45.0 cm

Offer Sustainability

Sustainable offer status	Green Premium product
REACH Regulation	REACH Declaration
EU RoHS Directive	Pro-active compliance (Product out of EU RoHS legal scope) EU RoHS Declaration
Mercury free	Yes
RoHS exemption information	Yes
China RoHS Regulation	China RoHS declaration Product out of China RoHS scope. Substance declaration for your information
Environmental Disclosure	Product Environmental Profile