



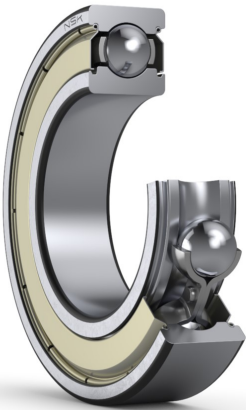
# PRODUCT DATASHEET

Datasheet creation date: 2025/07/08 2:16 (UTC)



## 6005ZZ

### Single-Row Deep Groove Ball Bearings



#### Boundary Dimensions

d	25	mm	Bore diameter
D	47	mm	Outside diameter
B	12	mm	Width
r (min.)	0.6	mm	Chamfer dimension

#### Basic Load Ratings

Cr	11100	N	Basic dynamic load rating
C0r	5850	N	Basic static load rating

#### Speeds

Grease	18000	min-1	Grease lubrication
--------	-------	-------	--------------------

#### Abutment and Fillet Dimensions

da (min.)	29	mm	Diameter of shaft abutment
da (max.)	30	mm	Diameter of shaft abutment
Da (max.)	43	mm	Diameter of housing abutment
ra (max.)	0.6	mm	Radius of shaft or housing fillet

#### Calculation factors

fo	14.5		Factor
----	------	--	--------

#### Additional information

z	10		Number of Balls
Dw	6.35	mm	Ball Diameter

#### Mass

Mass approx.	0.079	kg	Mass approx.
--------------	-------	----	--------------

