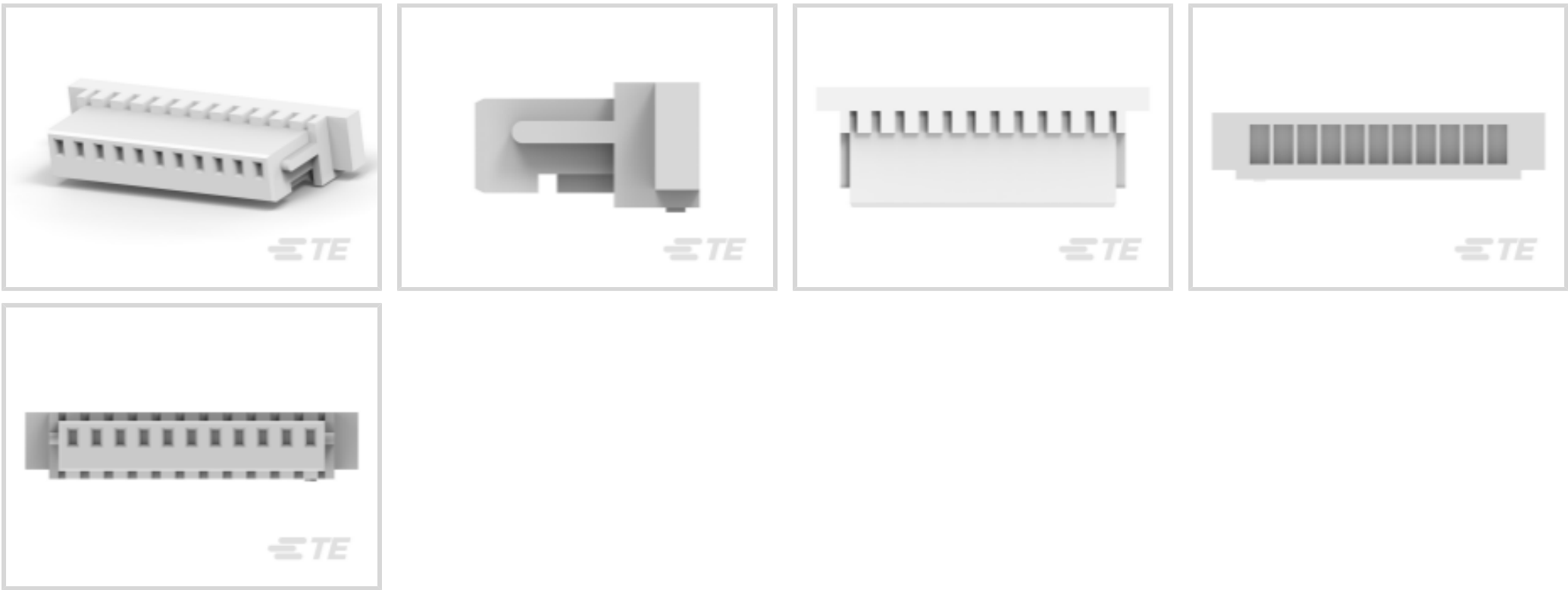




Connectors > PCB Connectors > Wire-to-Board Connectors > Wire-to-Board Connector Assemblies & Housings >

AMP HPI 1.0 mm Receptacle Housings



Connector Product Type: **Housing**

Connector & Housing Type: **Receptacle**

Connector System: **Wire-to-Board**

Number of Positions: **11**

Centerline (Pitch): **1 mm [.039 in]**

[All AMP HPI 1.0 mm Receptacle Housings \(0\)](#)

Features

Product Type Features

Connector Product Type	Housing
Connector & Housing Type	Receptacle
Connector System	Wire-to-Board
Sealable	No
Connector & Contact Terminates To	Wire & Cable

Configuration Features

Number of Positions	11
Number of Rows	1

Electrical Characteristics

Operating Voltage	50 VDC
-------------------	--------

Body Features

Primary Product Color	White
-----------------------	-------



Contact Features

Contact Layout	Inline
Contact Type	Socket
Contact Current Rating (Max)	1 A

Termination Features

Termination Method to Wire & Cable	Crimp
------------------------------------	-------

Mechanical Attachment

Strain Relief	Without
Panel Mount Feature	Without
PCB Mount Retention	Without
Mating Retention	Without
Connector Mounting Type	Cable Mount (Free-Hanging)

Housing Features

Housing Material	Thermoplastic
Housing Entry Configuration	Both Ends Closed
Centerline (Pitch)	1 mm[.039 in]

Dimensions

Connector Width	5 mm[.197 in]
Connector Height	2.8 mm[.11 in]
Wire Size	32 – 28 AWG
Connector Length	14 mm[.551 in]

Operation/Application

Circuit Application	Power & Signal
---------------------	----------------

Industry Standards

UL Flammability Rating	UL 94V-0
------------------------	----------

Packaging Features

Packaging Method	Bag
Packaging Quantity	24000

Product Compliance

For compliance documentation, visit the product page on TE.com>

EU RoHS Directive 2011/65/EU	Compliant
------------------------------	-----------



EU ELV Directive 2000/53/EC	Compliant
China RoHS 2 Directive MIIT Order No 32, 2016	No Restricted Materials Above Threshold
EU REACH Regulation (EC) No. 1907/2006	Current ECHA Candidate List: JAN 2025 (247) Candidate List Declared Against: JUN 2020 (209) Does not contain REACH SVHC
Halogen Content	Not Low Halogen - contains Br or Cl > 900 ppm.
Solder Process Capability	Not applicable for solder process capability

Product Compliance Disclaimer

This information is provided based on reasonable inquiry of our suppliers and represents our current actual knowledge based on the information they provided. This information is subject to change. The part numbers that TE has identified as EU RoHS compliant have a maximum concentration of 0.1% by weight in homogenous materials for lead, hexavalent chromium, mercury, PBB, PBDE, DBP, BBP, DEHP, DIBP, and 0.01% for cadmium, or qualify for an exemption to these limits as defined in the Annexes of Directive 2011/65/EU (RoHS2). Finished electrical and electronic equipment products will be CE marked as required by Directive 2011/65/EU. Components may not be CE marked. Additionally, the part numbers that TE has identified as EU ELV compliant have a maximum concentration of 0.1% by weight in homogenous materials for lead, hexavalent chromium, and mercury, and 0.01% for cadmium, or qualify for an exemption to these limits as defined in the Annexes of Directive 2000/53/EC (ELV). Regarding the REACH Regulation, the information TE provides on SVHC in articles for this part number is based on the latest European Chemicals Agency (ECHA) 'Guidance on requirements for substances in articles' posted at this URL: <https://echa.europa.eu/guidance-documents/guidance-on-reach>

Compatible Parts



TE Part # 1-1734595-1
1.0 WTB SR VT HDR 11 POS

Also in the Series | HPI



Connector Contacts(1)



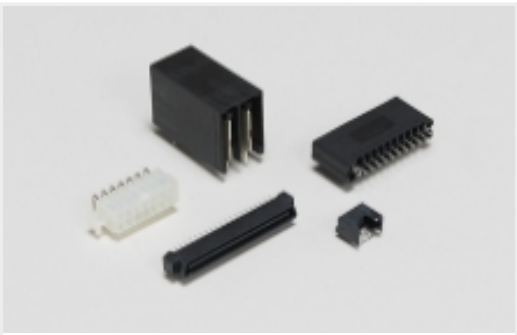
PCB Headers & Receptacles(332)



Rectangular Connector Housings(51)



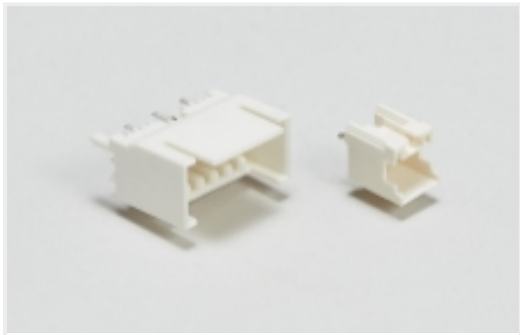
Rectangular Power Connectors(275)



Standard Rectangular Connectors(51)



Wire-to-Board Connector Assemblies & Housings(83)



Wire-to-Board Headers & Receptacles (332)

Customers Also Bought



TE Part #1625881-6
1W STD M/OX 2% 100R



TE Part #1623257-1
CRG0805 1% 5K1



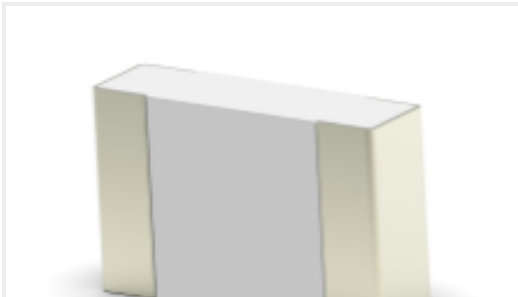
TE Part #1888250-4
low profile rj45, 1x1 grn/grn



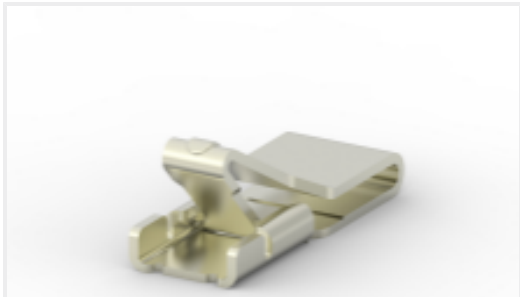
TE Part #1827625-1
SHIELD FINGER 3014 ANTI OVER STRESS TYPE



TE Part #1622328-1
LR1 1% 160R



TE Part #2176244-3
CRGS0805 5% 1R5



TE Part #2292838-3
PLATED SPRING FINGER WITH PACKAGING



TE Part #1423167-8
SSFR90XC926=PROTOTYPE



TE Part #1879448-9
TE 300W 4R7 5% Bracket



TE Part #91515-1
CCII TYPE III+ MNL PIN SKT 30-20 ASSY

Documents

Product Drawings

1.0MM W T B RECPT,11POSHOUSING

English

CAD Files

3D PDF

3D

Customer View Model

ENG_CVM_CVM_1-1470364-1_R_c-1-1470364-1-r.2d_dxf.zip



English

Customer View Model

[ENG_CVM_CVM_1-1470364-1_R_c-1-1470364-1-r.3d_igs.zip](#)

English

Customer View Model

[ENG_CVM_CVM_1-1470364-1_R_c-1-1470364-1-r.3d_stp.zip](#)

English

By downloading the CAD file I accept and agree to the [Terms and Conditions](#) of use.

Datasheets & Catalog Pages

[HPI Connectors QRG](#)

English

Product Specifications

[Application Specification](#)

English