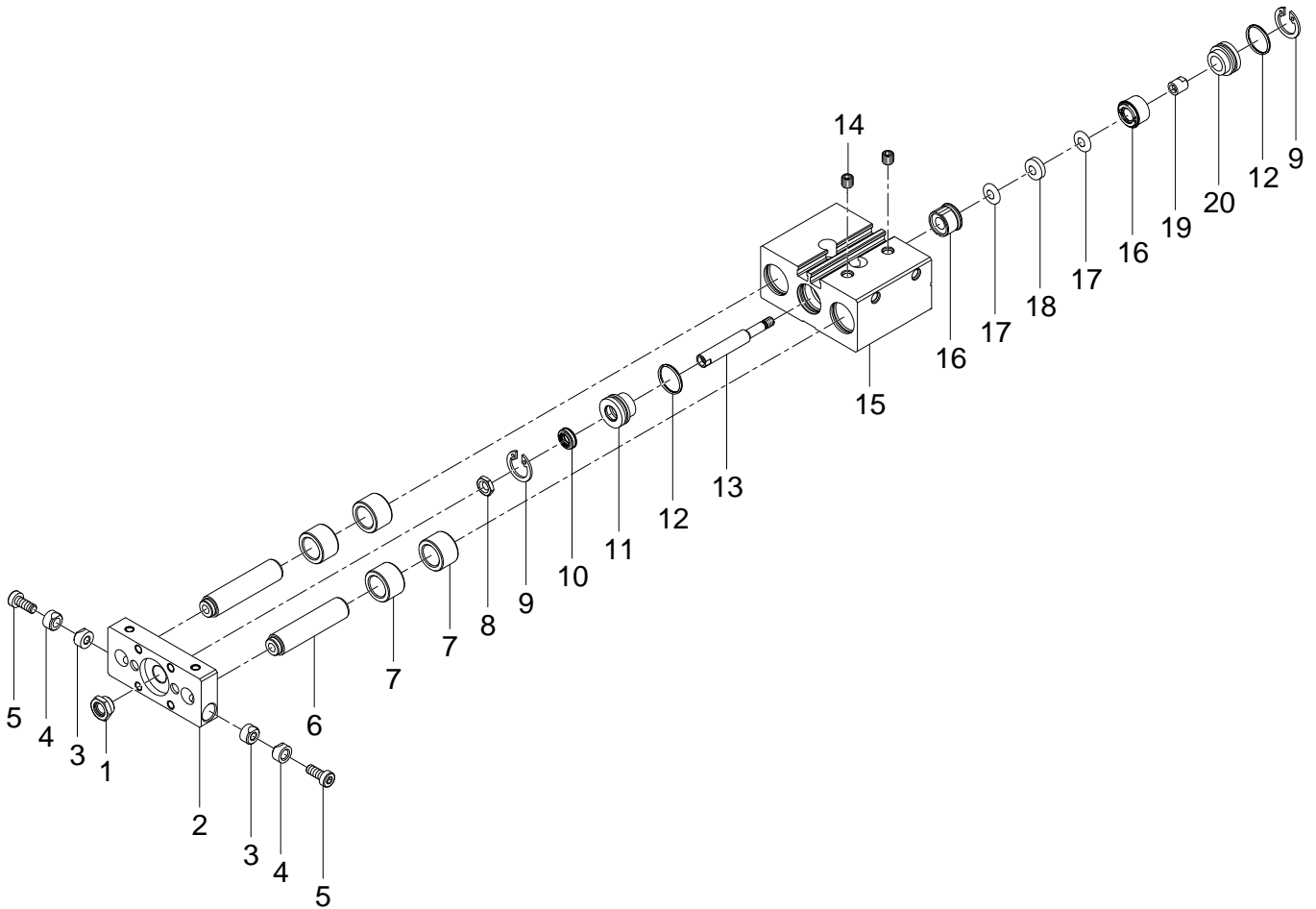


170834 DFM-16-25-P-A-GF Guided drive - Series till 10-2014



170834 DFM-16-25-P-A-GF Guided drive - Series till 10-2014

Pos.	Part no.	Type	Note	Qty.	Unit
A	383663	DFM- 16-PA Set of wearing parts	Spare parts: 10, 12, 16 Replacing the wearing parts	1	PC
1	377738	M8 Collar nut	Use locking compound 8181256 CYBERBOND TM44 Tightening torque 14.3 Nm / 10.5 lbf ft	1	PC
2	703138	DFM-16-P-A End plate		1	PC
3	368004	M 4 Clamping piece		2	PC
4	368003	M 4 Clamping piece		2	PC
5	324324	DIN 6912-M4X12-A4-70 Socket head screw	Use locking compound 8181256 CYBERBOND TM44 Tightening torque 3 Nm / 2.2 lbf ft	2	PC
6	663772	DFM-16-25-B-GF Guide rod		2	PC
7		DFM-16 Plain bearing	Not available	2	PC
8	387994	M8-1.0715 Hex nut	Tightening torque 14.3 Nm / 10.5 lbf ft	1	PC
9	200625	DIN 472-17X1 Retaining ring		2	PC
10		WIFC1-8X11,5X3,2-TPE-U Wiper seal	Not available separately, see position A Lubricate with 684474 LUB-KC1 during assembly	1	PC
11	713419	DFM - 16-PA Bearing cap		1	PC
12		B-15X1-N-NBR70 O-ring ISO3601	Not available separately, see position A Lubricate with 684474 LUB-KC1 during assembly	2	PC
13	368031	KS D03 08 S0037.05 Piston rod		1	PC
14	369947	M5X5 Plug screw module		1	PC
15		DFM- 16- 25PA Housing	Not available Lubricate with 684474 LUB-KC1 during assembly	1	PC
16		PEFC1-16-TPE-U Piston seal	Not available separately, see position A Lubricate with 684474 LUB-KC1 during assembly	2	PC
17	338263	6,2X14X0,5-1.0350 Disc		2	PC
18	338402	14,4X6X1,5 Ring magnet		1	PC
19	338229	ADVU- 16- -PA Collar nut	Use locking compound 8181256 CYBERBOND TM44 Tightening torque 1.6 Nm / 1.2 lbf ft	1	PC
20		DFM - 16-PA End cap	Not available	1	PC