

Features

- Heavy duty stainless steel 304 construction.
- Unique twist to unlck mechanism
- Includes stainless steel catchplate

RS PRO Door Latches

RS Stock No.: 0335165



RS Professionally Approved Products bring to you professional quality parts across all product categories. Our product range has been tested by engineers and provides a comparable quality to the leading brands without paying a premium price.

Product Description

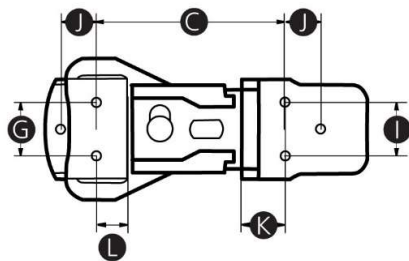
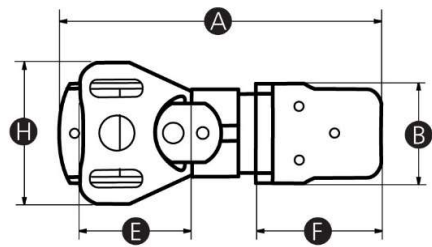
A high quality stainless steel butterfly catch with to twist-to-lock mechanism. Includes stainless steel 304 catch plate. Ideally suited to cases, flight cases, and enclosures.

General Specifications

| | |
|--------------------|---|
| Length | 104mm |
| Material | Stainless stee |
| Colour | Silver |
| Application | Cases, flight cases and industrial enclosures |

Mechanical Specifications

| | |
|---|-----|
| A | 104 |
| B | 34 |
| C | 60 |
| D | 11 |
| E | 38 |
| F | 40 |
| G | 18 |
| H | 48 |
| I | 18 |
| J | 12 |
| K | 12 |
| L | 11 |



Similar Products

| Stock No. | Brand | Product Name | Length |
|-----------|--------|---|--------|
| 0335162 | RS PRO | Stainless Steel Butterfly Latch | 88mm |
| 0335164 | RS PRO | Stainless Steel Butterfly Latch, Padlock Compatible | 89mm |
| 0335165 | RS PRO | Stainless Steel Butterfly Latch | 104mm |
| 0335166 | RS PRO | Stainless Steel Butterfly Latch, Padlock Compatible | 104mm |