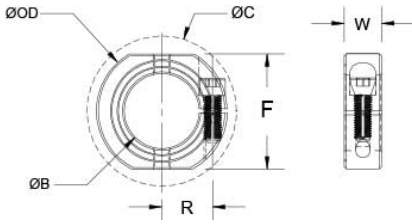




OF-MCL-20-A

Ruland OF-MCL-20-A, 20mm Shaft Collar With OD Flats And Holes, 2024 Aluminum, One-Piece Clamp Style, 40mm OD, 15mm Width



**Additional hardware NOT included*

Description

Ruland OF-MCL-20-A is a one-piece shaft collar with 20mm bore, 40mm OD, and 15mm width. OF-MCL-20-A has OD flats and tapped holes for mounting shaft collars to each other or adjacent components. The clamp style design does not mar the shaft, is easy to remove, and is indefinitely adjustable. OF-MCL-20-A is commonly used for guiding, spacing, stopping, mounting, and component alignment. Equipment manufacturers benefit from the tightly controlled face to bore perpendicularity (TIR of $\leq .05\text{mm}$). Perpendicularity is critical for alignment when the shaft collar is used as a load bearing face, mechanical stop, or for mounting components such as gears or bearings. Proprietary processes have been developed by Ruland to maintain superior fit, finish, and holding power. OF-MCL-20-A is stamped with the Ruland name and bore size for ease of identification. Forged screws test beyond DIN 912 12.9 standards to ensure maximum holding power. OF-MCL-20-A is machined from solid bar stock to a fine burr free finish and sourced exclusively from North American mills. Ruland uses high grade 2024 aluminum for increased screw seating torque. It is RoHS2 and REACH compliant and manufactured in our Marlborough, MA factory under strict controls using proprietary processes.

Product Specifications

Bore B	20 mm	Bore Tolerance	+0.050 mm / +.012 mm
Outer Diameter OD	40 mm	Clearance Diameter C MAX	47.4 mm
Width W	15 mm	Width Tolerance	+0.076 mm / -.254 mm
Threaded Mounting Hole	M6	Distance Across Flats	36 mm
Forged Clamp Screw	M6x16	Screw Material	Alloy Steel
Hex Wrench Size	5.0 mm	Screw Finish	Black Oxide
Seating Torque	16 Nm	Screw Location R	14.73 mm
Number of Screws	1 ea	Material Specification	2024-T351 Aluminum Bar
Temperature	-40°F to 225°F -40°C to 107°C	Finish Specification	Bright
Country of Origin	USA	Weight (lbs.)	0.0900
Note 1	Additional mounting hardware not included.		