

ME 22,5 OT-MSTBO SET BU - Upper housing part



2969443

<https://www.phoenixcontact.com/in/products/2969443>

Please be informed that the data shown in this PDF document is generated from our online catalog. Please find the complete data in the user documentation. Our general terms of use for downloads are valid.

DIN rail housing, Set comprised of upper housing part, 4 PCB headers (4-pos.), and 4 PCB terminal blocks with screw connection (4-pos.), width: 22.6 mm, height: 99 mm, depth: 45.85 mm, color: blue (similar RAL 5015)



Your advantages

- Tool-free mounting
- Available in overall widths from 12.5 mm ... 90 mm, modular extension is possible
- Flammability rating V0 in accordance with UL 94
- Variety of connection technology
- Can be mounted on the DIN rail
- With integrated or DIN-rail-mountable bus connector as an option

Commercial data

Item number	2969443
Packing unit	100 pc
Minimum order quantity	100 pc
Sales key	ACH
Product key	ACHAAD
GTIN	4017918936662
Weight per piece (including packing)	51.53 g
Weight per piece (excluding packing)	52.3 g
Customs tariff number	85366990
Country of origin	DE

ME 22,5 OT-MSTBO SET BU - Upper housing part



2969443

<https://www.phoenixcontact.com/in/products/2969443>

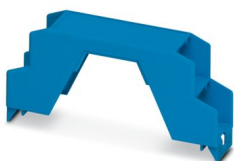
Set consists of

ME 22,5 OT-MSTBO BU - Upper housing part

2908948

<https://www.phoenixcontact.com/in/products/2908948>

DIN rail housing, Upper housing part for connectors with header, width: 22.6 mm, height: 99 mm, depth: 45.85 mm, color: blue (similar RAL 5015)



MSTBT 2,5/ 4-ST BU - PCB connector

1878040

<https://www.phoenixcontact.com/in/products/1878040>

PCB connector, nominal cross section: 2.5 mm², color: blue, nominal current: 12 A, rated voltage (III/2): 320 V, contact surface: Sn, contact connection type: Socket, number of potentials: 4, number of rows: 1, number of positions: 4, number of connections: 4, product range: MSTBT 2,5/...-ST, pitch: 5 mm, connection method: Screw connection with tension sleeve, screw head form: L Slotted, conductor/PCB connection direction: 0 °, pin layout: Linear pinning, locking clip: - Locking clip, plug-in system: COMBICON MSTB 2,5, locking: without, mounting method: without, type of packaging: packed in cardboard



ME 22,5 OT-MSTBO SET BU - Upper housing part



2969443

<https://www.phoenixcontact.com/in/products/2969443>

MSTBO 2,5/ 4-G1L BU - PCB header

2907790

<https://www.phoenixcontact.com/in/products/2907790>

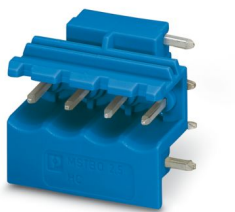


PCB headers, nominal cross section: 2.5 mm², color: blue, nominal current: 12 A, rated voltage (III/2): 320 V, contact surface: Sn, contact connection type: Pin, number of potentials: 4, number of rows: 1, number of positions: 4, number of connections: 4, product range: MSTBO 2,5/...-G1L, pitch: 5 mm, mounting: Wave soldering, pin layout: Linear pinning, solder pin [P]: 3.5 mm, number of solder pins per potential: 1, plug-in system: COMBICON MSTB 2,5, Pin connector pattern alignment: Orthogonal, locking: without, type of packaging: packed in cardboard, Product with pin output on left side

MSTBO 2,5/ 4-G1R BU - PCB header

2907800

<https://www.phoenixcontact.com/in/products/2907800>



PCB headers, nominal cross section: 2.5 mm², color: blue, nominal current: 12 A, rated voltage (III/2): 320 V, contact surface: Sn, contact connection type: Pin, number of potentials: 4, number of rows: 1, number of positions: 4, number of connections: 4, product range: MSTBO 2,5/...-G1R, pitch: 5 mm, connection method: pluggable, mounting: Wave soldering, pin layout: Linear pinning, solder pin [P]: 3.5 mm, number of solder pins per potential: 1, plug-in system: COMBICON MSTB 2,5, Pin connector pattern alignment: Orthogonal, locking: without, type of packaging: packed in cardboard, Product with pin output on right side

ME 22,5 OT-MSTBO SET BU - Upper housing part



2969443

<https://www.phoenixcontact.com/in/products/2969443>

Technical data

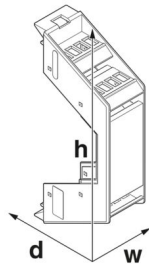
Notes

Assembly note	Please observe the application note in the download area.
---------------	---

Product properties

Product type	Upper housing part
Housing type	DIN rail housing
Housing series	ME
Product family	ME 22,5..
Number of positions	16
Max. number of positions	16 (pitch: 5 mm)
Number of rows	2
Type	Set comprised of upper housing part, 4 PCB headers (4-pos.), and 4 PCB terminal blocks with screw connection (4-pos.)
Ventilation openings present	no

Dimensions

Dimensional drawing	
Width	22.6 mm
Height	99 mm
Depth	45.85 mm
Depth from base support surface	38.5 mm

PCB design

PCB thickness	1.4 mm ... 1.8 mm
---------------	-------------------

Material specifications

Color (Housing)	blue (RAL 5015)
Flammability rating according to UL 94	V0
CTI according to IEC 60112	600
Housing material	PA
Surface characteristics	untreated

Environmental and real-life conditions

Vibration test

Specification	IEC 60068-2-6:2007-12
---------------	-----------------------

ME 22,5 OT-MSTBO SET BU - Upper housing part



2969443

<https://www.phoenixcontact.com/in/products/2969443>

Frequency	10 - 150 - 10 Hz
Sweep speed	1 octave/min
Amplitude	0.15 mm (10 Hz ... 58.1 Hz)
Acceleration	2g (58.1 Hz ... 150 Hz)
Test duration per axis	2.5 h
Test directions	X-, Y- and Z-axis

Glow-wire test

Specification	IEC 60695-2-11:2014-02
Temperature	850 °C
Time of exposure	30 s

Thermal stability / ball thrust test

Specification	IEC 60695-10-2:2014-02
Temperature	125 °C
Test duration	1 h
Force	20 N

Mechanical strength / tumbling barrel

Specification	IEC 60998-1:2002-12
Height of fall	50 cm
Frequency	10

Shocks

Specification	IEC 60068-2-27:2008-02
Pulse shape	Half-sine
Acceleration	15g
Shock duration	11 ms
Number of shocks per direction	3
Test directions	X-, Y- and Z-axis (pos. and neg.)

Degree of protection (IP code)

Specification	IEC 60529:1989-11 + AMD 1:1999-11 + AMD 2:2013-08
---------------	---

Ambient conditions

Max. IP code to attain	IP20
Ambient temperature (operation)	-40 °C ... 105 °C (depending on power dissipation)
Ambient temperature (storage/transport)	-40 °C ... 55 °C
Ambient temperature (assembly)	-5 °C ... 100 °C
Relative humidity (storage/transport)	80 %

PCB data

Number of PCB holders	1
Type of PCB mount	Slot
Thickness of the PCB	1.4 mm ... 1.8 mm

Mounting

ME 22,5 OT-MSTBO SET BU - Upper housing part



2969443

<https://www.phoenixcontact.com/in/products/2969443>

Mounting type	Latching with lower housing part
---------------	----------------------------------

Packaging specifications

Type of packaging	packed in cardboard
Outer packaging type	Carton

ME 22,5 OT-MSTBO SET BU - Upper housing part

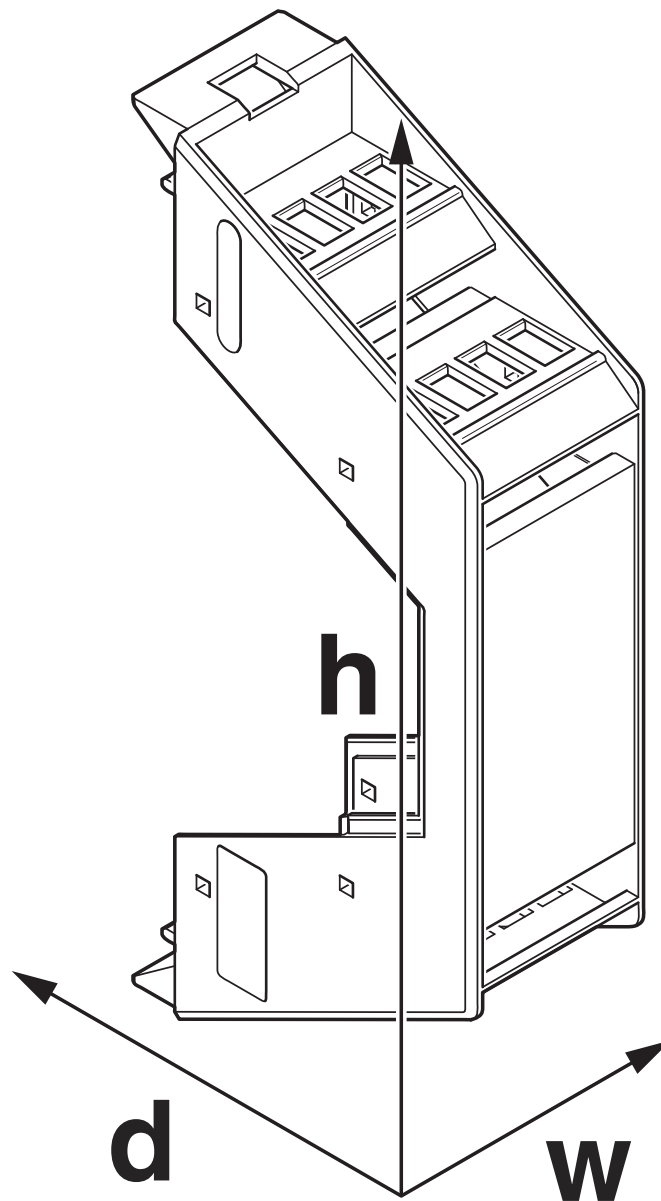
2969443

<https://www.phoenixcontact.com/in/products/2969443>



Drawings

Dimensional drawing



Schematic figure for illustrating the item dimensions. The figure is not of the desired product. For further details, refer to the product drawings in the "Downloads" tab.

ME 22,5 OT-MSTBO SET BU - Upper housing part



2969443

<https://www.phoenixcontact.com/in/products/2969443>

Approvals

To download certificates, visit the product detail page: <https://www.phoenixcontact.com/in/products/2969443>

cUL Recognized Approval ID: FILE E 60425				
	Nominal voltage U_N	Nominal current I_N	Cross section AWG	Cross section mm^2
Use group B	250 V	12 A	30 - 12	-
Use group D	300 V	10 A	30 - 12	-

UL Recognized Approval ID: FILE E 60425				
	Nominal voltage U_N	Nominal current I_N	Cross section AWG	Cross section mm^2
Use group B	250 V	12 A	30 - 12	-
Use group D	300 V	10 A	30 - 12	-

cULus Recognized				
------------------	--	--	--	--

ME 22,5 OT-MSTBO SET BU - Upper housing part



2969443

<https://www.phoenixcontact.com/in/products/2969443>

Classifications

ECLASS

ECLASS-11.0	27182702
ECLASS-13.0	27190401

ETIM

ETIM 9.0	EC001031
----------	----------

UNSPSC

UNSPSC 21.0	31261500
-------------	----------

Environmental product compliance

EU RoHS

Fulfills EU RoHS substance requirements	Yes
Exemption	6(c)

China RoHS

Environment friendly use period (EFUP)	EFUP-50
	An article-related China RoHS declaration table can be found in the download area for the respective article under "Manufacturer declaration". For all articles with EFUP-E, no China RoHS declaration table issued and required.

EU REACH SVHC

REACH candidate substance (CAS No.)	Lead(CAS: 7439-92-1)
SCIP	ca902b31-5758-4a8c-9462-9cf0d8f3d118

ME 22,5 OT-MSTBO SET BU - Upper housing part



2969443

<https://www.phoenixcontact.com/in/products/2969443>

Mandatory accessories

ME 22,5 UTG BU - Mounting base housing

2908029

<https://www.phoenixcontact.com/in/products/2908029>



DIN rail housing, Lower housing part with metal foot catch, tall design, without vents, width: 22.6 mm, height: 99 mm, depth: 107.3 mm, color: blue (similar RAL 5015), cross connection: without bus connector, number of positions cross connector: not relevant

ME 22,5 UTG/FE BU - Mounting base housing

2713036

<https://www.phoenixcontact.com/in/products/2713036>



DIN rail housing, Lower housing part with metal foot catch, with FE contact, tall design, without vents, width: 22.6 mm, height: 99 mm, depth: 107.3 mm, color: blue (similar RAL 5015), cross connection: without bus connector, number of positions cross connector: not relevant

ME 22,5 OT-MSTBO SET BU - Upper housing part

2969443

<https://www.phoenixcontact.com/in/products/2969443>



ME 22,5 UT/FE BU - Mounting base housing

2914987

<https://www.phoenixcontact.com/in/products/2914987>



DIN rail housing, Lower housing part with metal foot catch, with FE contact, tall design, with vents, width: 22.6 mm, height: 99 mm, depth: 107.3 mm, color: blue (similar RAL 5015), cross connection: without bus connector, number of positions cross connector: not relevant

ME 22,5 UT/FE BUS/10 BU - Mounting base housing

2853323

<https://www.phoenixcontact.com/in/products/2853323>



DIN rail housing, Lower housing part with metal foot catch, with FE contact, tall design, with vents, width: 22.6 mm, height: 99 mm, depth: 107.3 mm, color: blue (similar RAL 5015), cross connection: integrated bus connector, number of positions cross connector: 10, Bus connector: 10 parallel contacts

ME 22,5 OT-MSTBO SET BU - Upper housing part

2969443

<https://www.phoenixcontact.com/in/products/2969443>

ME 22,5 UT/FE BUS/10+2 BU - Mounting base housing

2706768

<https://www.phoenixcontact.com/in/products/2706768>



DIN rail housing, Lower housing part with metal foot catch, with FE contact, tall design, with vents, width: 22.6 mm, height: 99 mm, depth: 107.3 mm, color: blue (similar RAL 5015), cross connection: integrated bus connector, number of positions cross connector: 10+2, Bus connector: 10 parallel contacts, 2 serial contacts

ME 22,5 UT/FE BU 5010 - Mounting base housing

2202236

<https://www.phoenixcontact.com/in/products/2202236>



DIN rail housing, Lower housing part with metal foot catch, with FE contact, tall design, with vents, width: 22.6 mm, height: 99 mm, depth: 107.3 mm, color: gentian blue (similar RAL 5010), cross connection: without bus connector, number of positions cross connector: not relevant

ME 22,5 OT-MSTBO SET BU - Upper housing part

2969443

<https://www.phoenixcontact.com/in/products/2969443>



ME 22,5 UT/FE TBUS BU - Mounting base housing

2901097

<https://www.phoenixcontact.com/in/products/2901097>



DIN rail housing, Lower housing part with metal foot catch, with FE contact, tall design, with vents, width: 22.6 mm, height: 99 mm, depth: 107.3 mm, color: blue (similar RAL 5015), cross connection: DIN rail connector (optional), number of positions cross connector: 5

ME 22,5 UT BUS/10 BU - Mounting base housing

2896500

<https://www.phoenixcontact.com/in/products/2896500>



DIN rail housing, Lower housing part with metal foot catch, tall design, with vents, width: 22.6 mm, height: 99 mm, depth: 107.3 mm, color: blue (similar RAL 5015), cross connection: integrated bus connector, number of positions cross connector: 10, Bus connector: 10 parallel contacts

ME 22,5 OT-MSTBO SET BU - Upper housing part

2969443

<https://www.phoenixcontact.com/in/products/2969443>



ME 22,5 UT BU - Mounting base housing

2908362

<https://www.phoenixcontact.com/in/products/2908362>



DIN rail housing, Lower housing part with metal foot catch, tall design, with vents, width: 22.6 mm, height: 99 mm, depth: 107.3 mm, color: blue (similar RAL 5015), cross connection: without bus connector, number of positions cross connector: not relevant

ME 22,5 UT TBUS BU - Mounting base housing

2713971

<https://www.phoenixcontact.com/in/products/2713971>



DIN rail housing, Lower housing part with metal foot catch, tall design, with vents, width: 22.6 mm, height: 99 mm, depth: 107.3 mm, color: blue (similar RAL 5015), cross connection: DIN rail connector (optional), number of positions cross connector: 5

ME 22,5 OT-MSTBO SET BU - Upper housing part



2969443

<https://www.phoenixcontact.com/in/products/2969443>

ME 22,5 UT/FE BUS/10 BU 5010 - Mounting base housing

2202237

<https://www.phoenixcontact.com/in/products/2202237>



DIN rail housing, Lower housing part with metal foot catch, with FE contact, tall design, with vents, width: 22.6 mm, height: 99 mm, depth: 107.3 mm, color: gentian blue (similar RAL 5010), cross connection: integrated bus connector, number of positions cross connector: 10, Bus connector: 10 parallel contacts

Phoenix Contact 2025 © - all rights reserved

<https://www.phoenixcontact.com>

PHOENIX CONTACT (I) Pvt. Ltd.

A-58/2, Okhla Industrial Area, Phase - II, New Delhi-110 020

+91.1275.71420

info@phoenixcontact.co.in