

# X67SM2436

Data sheet  
2.80 (September 2024)



**Publishing information**

B&R Industrial Automation GmbH

B&R Strasse 1

5142 Eggelsberg

Austria

Telephone: +43 7748 6586-0

Fax: +43 7748 6586-26

[office@br-automation.com](mailto:office@br-automation.com)

**Disclaimer**

All information in this document is current as of its creation. The contents of this document are subject to change without notice. B&R Industrial Automation GmbH assumes unlimited liability in particular for technical or editorial errors in this document only (i) in the event of gross negligence or (ii) for culpably inflicted personal injury. Beyond that, liability is excluded to the extent permitted by law. Liability in cases in which the law stipulates mandatory unlimited liability (such as product liability) remains unaffected. Liability for indirect damage, consequential damage, business interruption, loss of profit or loss of information and data is excluded, in particular for damage that is directly or indirectly attributable to the delivery, performance and use of this material.

B&R Industrial Automation GmbH notes that the software and hardware designations and brand names of the respective companies used in this document are subject to general trademark, brand or patent protection.

Hardware and software from third-party suppliers referenced in this document is subject exclusively to the respective terms of use of these third-party providers. B&R Industrial Automation GmbH assumes no liability in this regard. Any recommendations made by B&R Industrial Automation GmbH are not contractual content, but merely non-binding information for which no liability is assumed. When using hardware and software from third-party suppliers, the relevant user documentation of these third-party suppliers must additionally be consulted and, in particular, the safety guidelines and technical specifications contained therein must be observed. The compatibility of the products from B&R Industrial Automation GmbH described in this document with hardware and software from third-party suppliers is not contractual content unless this has been separately agreed in individual cases; in this respect, warranty for such compatibility is excluded in any case, and it is the sole responsibility of the customer to verify this compatibility in advance.

**Version history**

B&R makes every effort to keep documents as current as possible. The most current versions are available for download on the B&R website ([www.br-automation.com](http://www.br-automation.com)).

# 1 General information

## 1.1 Other applicable documents

For additional and supplementary information, see the following documents.

### Other applicable documents

Document name	Title
MAX67	<a href="#">X67 System user's manual</a>
MAEMV	<a href="#">Installations / EMV guide</a>

## 1.2 Order data


Order number	Short description	Figure
	<b>Motor modules</b>	
X67SM2436	X67 stepper motor module, I/O power supply 24-38.5 VDC $\pm 25\%$ , max. 8 A, 2 motor connections, 3 A continuous current, 5 A peak current, 2x 3 digital inputs 24 VDC, sink, configurable as incremental encoder, NetTime function	

Table 1: X67SM2436 - Order data

<b>Required accessories</b>
For a general overview, see section "Accessories - General overview" in the X67 System user's manual.

## 1.3 Module description

The stepper motor module is used to control up to 2 stepper motors with a nominal voltage of 24 to 38.5 VDC  $\pm 25\%$  at a motor current up to 3 A (5 A peak).

Functions:

- [Integrated motor detection](#)
- [Currents independently configurable](#)
- [Stall detection](#)
- [Homing](#)
- [Limitations](#)
- [Motion generator](#)
- [Counters](#)
- [Digital inputs](#)
- [Automatic shutdown](#)
- [NetTime Technology](#)

### Integrated motor detection

Due to the integrated motor detection, the connected motors can be identified by their coil characteristics and feedback in the form of an analog value can be generated. This makes it possible to detect not only wiring errors, but also incorrect motor types being used.

### Currents independently configurable

With individual adjustment of the coil currents, the motor is only operated with the current it actually needs. This prevents unnecessary heating of the motor. This lower heating has a positive effect on the energy consumption, thermal load and thus on the service life of the complete system.

### Stall detection

Stall detection is integrated to analyze the motor load. Motor stall detection is defined by a configurable threshold. This allows an overload or motor stall to be detected sufficiently accurately in many applications.

### Homing

A large selection of homing procedures allows a wide range of applications for the module. In addition to procedures triggered by limit switches, stop-controlled and immediate homing procedures can also be defined.

For end stop-controlled homing, a delay time can also be defined for stall detection. Homing is only performed after the delay time has elapsed. This prevents unwanted homing due to accidental, brief stoppage of the motor.

### Limitations

Software limitations and/or hardware limit switches allow precise control of the maximum range of movement. This prevents limit transgressions that could result in damage to the machine.

### Motion generator

Movements can be generated directly by the module. Homing or exact positioning procedures can be implemented with minimal application effort using a specified target position and acceleration as well as several other parameters.

### Counter functions

The exact position of the motor can be determined either by an AB(R) encoder or by internal calculations in the module. This allows a large number of motors to be used that are precisely adapted to the machine requirements.

### Inputs/Outputs

The module is equipped with digital inputs that can additionally be used as homing inputs, limit switches or AB(R) encoder inputs.

**Automatic shutdown**

The voltage of the module power supply and the module temperature are monitored. If a value overshoots the predefined limit value, the module is automatically shut down. The outputs are automatically started up again as soon as the value is within the limit value again.

In addition, SDC life sign monitoring can be used to monitor the communication between the controller and module. An interruption of the communication triggers an automatic shutdown of the motor by the module.

The module current, the voltage of the module power supply and the module temperature are monitored. If a value overshoots the predefined limit value, the module is automatically shut down.

**NetTime timestamp of the position and trigger time**

It is not just the position value that is important for highly dynamic positioning tasks, but also the exact time the position is measured. The module is equipped with a NetTime function for this that supplies a timestamp for the recorded position and trigger time with microsecond accuracy.

## 2 Technical description

### 2.1 Technical data

Order number	<b>X67SM2436</b>
Short description	
I/O module	2 full bridges for controlling stepper motors
<b>General information</b>	
B&R ID code	0x1DCB
Status indicators	I/O function per channel, supply voltage, bus function
Diagnostics	
I/O power supply	Yes, using LED status indicator and software
Motor status	Yes, using LED status indicator and software
Connection type	
X2X Link	M12, B-coded
Inputs/Outputs	4x M12, A-coded
I/O power supply	M8, 4-pin
Power consumption	
X2X Link power supply	0.75 W
Internal I/O	
At 24 VDC	1.7 W
At 48 VDC	2 W
Certifications	
CE	Yes
UKCA	Yes
ATEX	Zone 2, II 3G Ex nA IIA T5 Gc IP67, Ta = 0 - Max. 60°C TÜV 05 ATEX 7201X
UL	cULus E115267 Industrial control equipment
HazLoc	cCSAus 244665 Process control equipment for hazardous locations Class I, Division 2, Groups ABCD, T5
KC	Yes
<b>Motor bridge - Power unit</b>	
Quantity	2
Type	2-phase bipolar stepper motor (full bridge)
Nominal voltage	24 to 38.5 VDC $\pm 25\%$ <sup>1)</sup>
Nominal current	3 A
Max. current/motor	5 A for 2 s (after a recovery time of at least 10 s at maximum 3 A)
Max. current/module	8 A
Controller frequency	38.5 kHz
DC bus capacitance	200 $\mu$ F
Step resolution	256 microsteps per full step
<b>I/O power supply</b>	
Nominal voltage	24 to 38.5 VDC $\pm 25\%$
Power consumption	
Sensor power supply	Max. 0.96 W
Integrated protection	
Reverse polarity protection	No
<b>Digital inputs</b>	
Quantity	6
Nominal voltage	24 VDC
Input characteristics per EN 61131-2	Type 1
Input voltage	24 VDC -15% / +20%
Input current at 24 VDC	Approx. 4 mA
Input circuit	Sink
Input filter	
Hardware	<5 $\mu$ s
Software	-
Input resistance	Typ. 5.4 k $\Omega$
Additional functions	2x ABR incremental encoder
Switching threshold	
Low	<5 VDC
High	>15 VDC
Insulation voltage between channel and bus	500 V <sub>eff</sub>

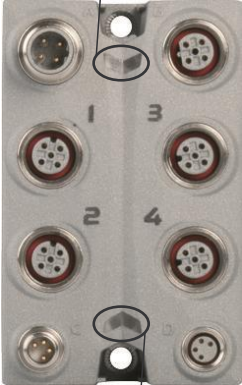
Table 2: X67SM2436 - Technical data

<b>Order number</b>	<b>X67SM2436</b>
<b>ABR incremental encoder</b>	
Quantity	2
Encoder inputs	24 V, asymmetrical
Counter size	16-bit
Input frequency	Max. 50 kHz
Evaluation	4x
Encoder power supply	Module-internal, max. 20 mA per encoder
Signal form	Square wave pulse
Counter 1	Inputs 1 to 3
Counter 2	Inputs 4 to 6
Counter frequency	Max. 200 kHz
<b>Sensor power supply</b>	
Supply voltage	24 VDC
Short-circuit proof	Yes
Supply voltage Min. voltage at 20 mA / group	20 VDC
<b>Electrical properties</b>	
Electrical isolation	Channel isolated from bus Channel not isolated from channel
<b>Operating conditions</b>	
Mounting orientation	
Any	Yes
Installation elevation above sea level	
0 to 2000 m	No limitation
>2000 m	Reduction of ambient temperature by 0.5°C per 100 m
Degree of protection per EN 60529	IP67
<b>Ambient conditions</b>	
Temperature	
Operation	0 to 50°C
Derating	-
Storage	-25 to 85°C
Transport	-25 to 85°C
<b>Mechanical properties</b>	
Dimensions	
Width	53 mm
Height	85 mm
Depth	42 mm
Weight	195 g
Torque for connections	
M8	Max. 0.4 Nm
M12	Max. 0.6 Nm

Table 2: X67SM2436 - Technical data

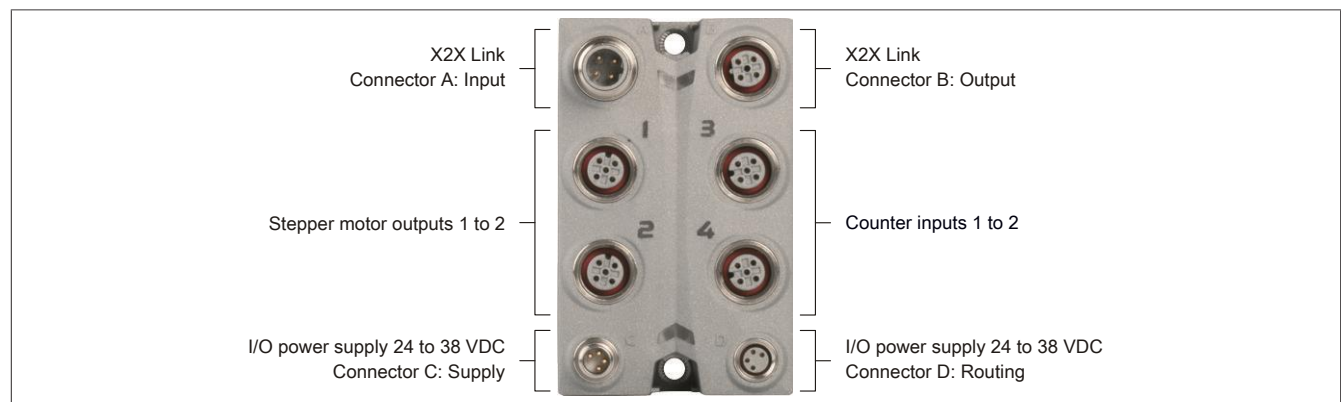
- 1) The tolerance value is composed of the voltage tolerances and permissible total AC voltage component with a peak value of 5% of the rated voltage.

## 2.2 LED status indicators

Figure	LED	Color/Status		Description
 <p>Status indicator 1: Left: Green, Right: Red</p> <p>Status indicator 2: Left: Green, Right: Red</p>	<b>Status indicator 1:</b> Status indicator for X2X Link			
	Left/Right	<b>Green(left)</b>	<b>Red(right)</b>	<b>Description</b>
		Off	Off	No power supply via X2X Link
		On	Off	X2X Link supplied, communication OK
		Off	On	X2X Link supplied but no X2X Link communication
		On	On	PREOPERATIONAL: X2X Link supplied, module not initialized
	<b>I/O LEDs:</b> Status indicator			
	1 - 2	<b>Color</b>	<b>Status</b>	<b>Description</b>
		Yellow	On	Motor 1 or 2 is active.
	3	<b>Color</b>	<b>Status</b>	<b>Description</b>
		Green	On	Input 1 to 3 (in)
	4	<b>Color</b>	<b>Status</b>	<b>Description</b>
		Green	On	Input 4 to 6 (in)
	<b>Status indicator 2:</b> Status indicator for module functionality			
	Left	<b>Color</b>	<b>Status</b>	<b>Description</b>
Green		Off	No power to module	
		Single flash	Mode RESET	
		Blinking	Mode PREOPERATIONAL	
		Double flash	Mode BOOT (during firmware update) <sup>1)</sup>	
		On	Mode RUN	
Right	<b>Color</b>	<b>Status</b>	<b>Description</b>	
	Red	Off	Module not supplied with power or everything OK	
		On	Error or reset state	
		Single flash	Warning/Error on an I/O channel. Overflow in analog inputs.	
		Double flash	Supply voltage not within the valid range	

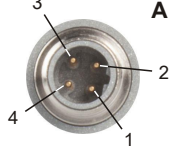
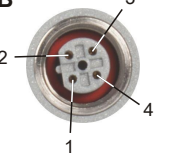
1) Depending on the configuration, a firmware update can take up to several minutes.

## 2.3 Connection elements



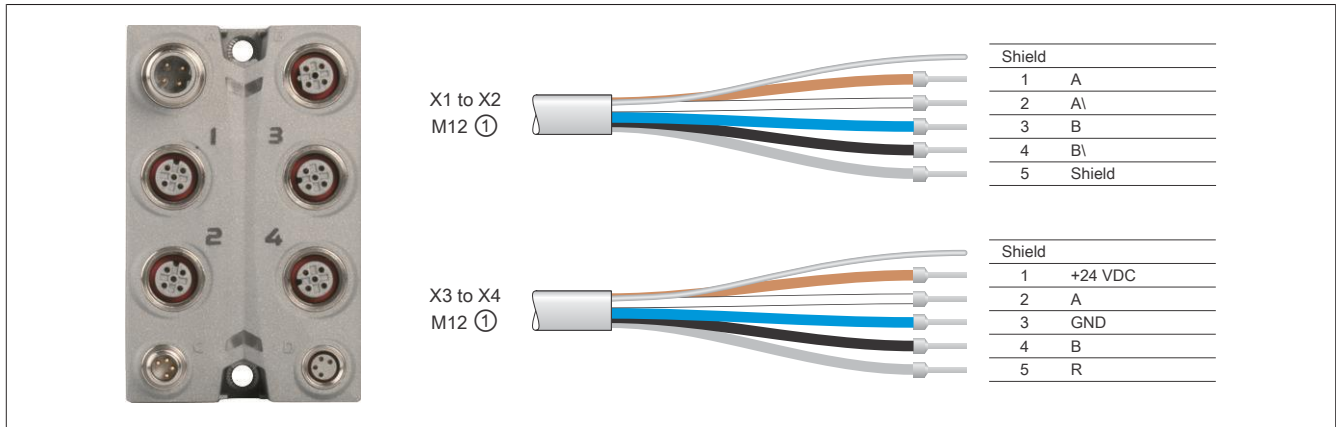
### 2.3.1 X2X Link

The module is connected to the X2X Link network using pre-assembled cables. The connection is made using M12 circular connectors.

Connection	Pinout	
 <p>A</p>	<b>Pin</b>	<b>Name</b>
	1	X2X+
	2	X2X
	3	X2X_L
	4	X2X\
	Shield connection made via threaded insert in the module.	
 <p>B</p>	A → B-coded (male), input	
	B → B-coded (female), output	

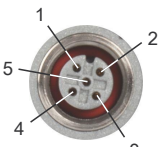


## 2.3.2 Pinout



- ① X67CA0A41.xxxx: M12 sensor cable, straight  
X67CA0A51.xxxx: M12 sensor cable, angled

### 2.3.2.1 Connections X1 to X2

M12, 5-pin X1 / X2	Pinout	
	Pin	Name
	1	Stepper motor A
	2	Stepper motor A\
	3	Stepper motor B
	4	Stepper motor B\
	5	Shield



### Warning!

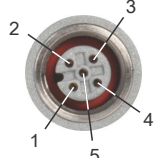
Circular connectors are not permitted to be connected or disconnected during operation.



### Information:

Shielded motor cables must be used in order to meet the limit values per standard EN 55011 (emissions).

### 2.3.2.2 Connections X3 to X4

M12, 5-pin X3 / X4	Pinout	
	Pin	Connection 3 <sup>1)</sup>
	1	Power supply for digital inputs (24 V summation current 0.02 A)
	2	Digital input 1, ABR1 - A
	3	GND
	4	Digital input 2, ABR1 - B
	5	Digital input 3, ABR1 - R
	Shield connection made via threaded insert in the module	
		Connection 4 <sup>1)</sup>
		Digital input 4, ABR2 - A
		GND
		Digital input 5, ABR2 - B, Trigger input
		Digital input 6, ABR2 - R

- 1) All digital inputs: 24 V / <4 μs



### Warning!

Circular connectors are not permitted to be connected or disconnected during operation.

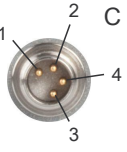
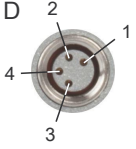
2.3.3 I/O power supply 24 to 38.5 VDC

The I/O power supply is connected using circular connectors (M8, 4-pin). The power supply is fed via connector C (male). Connector D (female) is used to route the power supply to other modules.



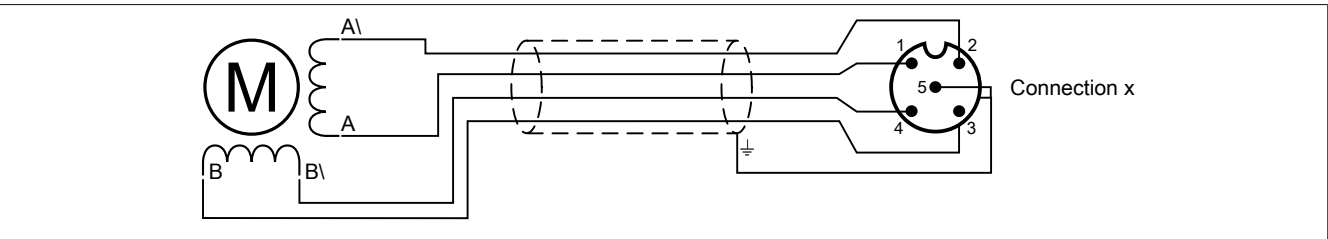
Information:

The maximum permissible current per power supply is 4 A (in summation 8 A)!

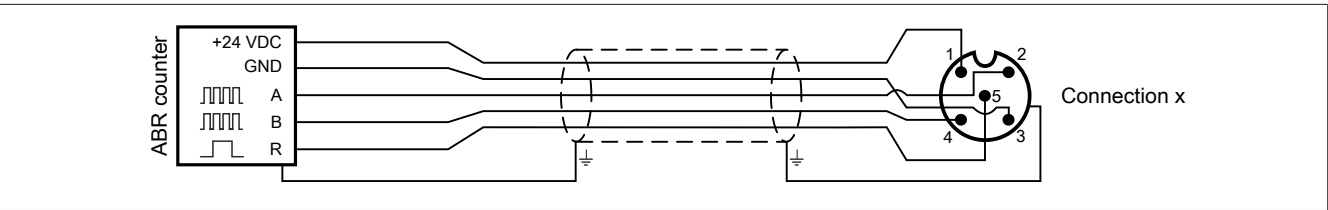
Connection	Pinout	
	Pin	Name
	1	24 to 38.5 VDC ±25%
	2	24 to 38.5 VDC ±25%
	3	GND
	4	GND
C → Connector (male) in module, supply D → Connector (female) in module, routing		
		

2.4 Connection example

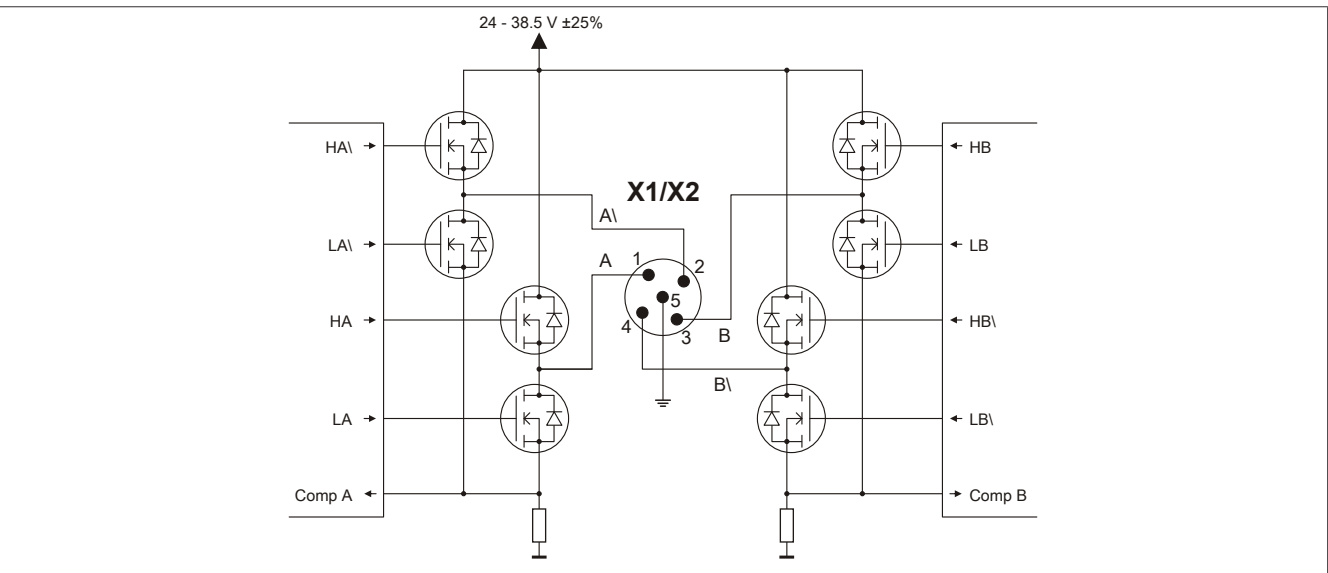
Connection 1 to 2: Stepper motor



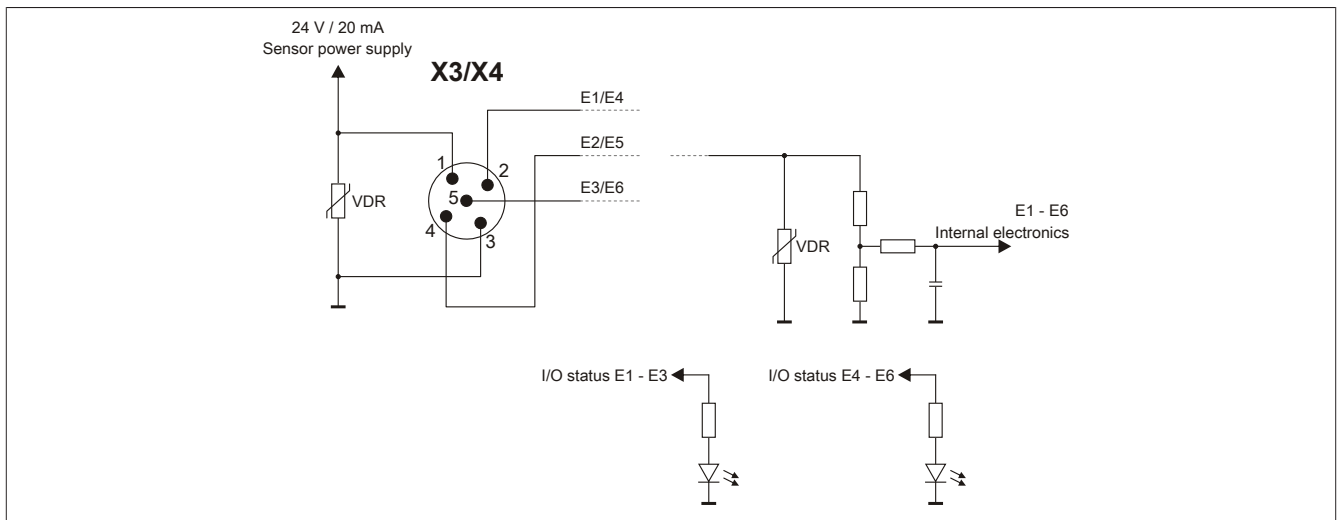
Connection 3 to 4: Digital inputs



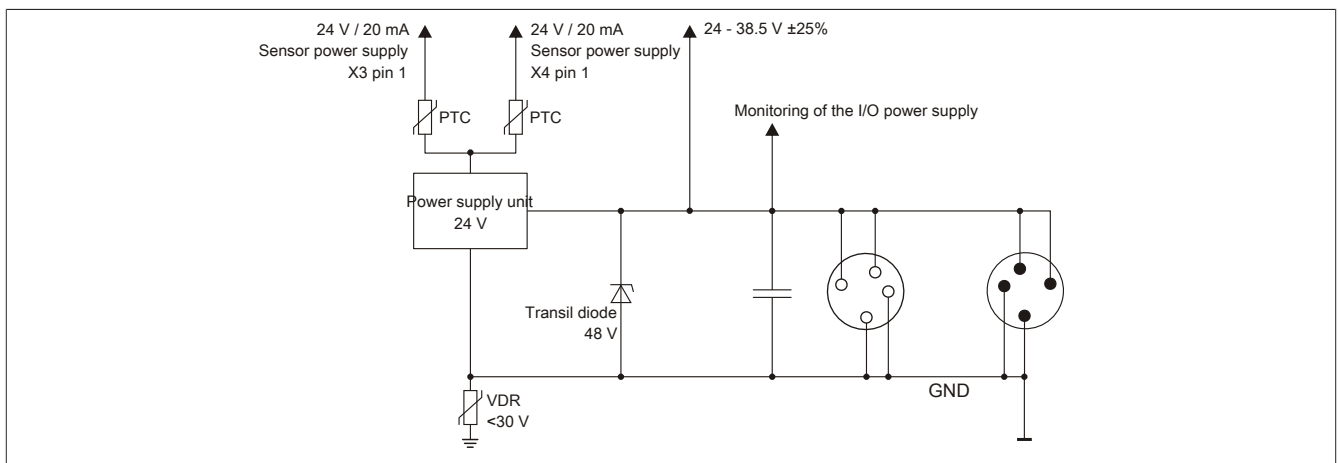
2.5 Output circuit diagram



## 2.6 Input circuit diagram



## 2.7 I/O power supply circuit diagram



## 2.8 Installation

Top-hat rail installation can only be recommended if the module is used for low power ratings.

In order to improve heat dissipation, it is recommended to install the module on a cooler machine part or on a base plate of at least 1 dm<sup>2</sup>. In addition, a distance of at least 1 cm to the next X67 module must be maintained.

## 2.9 Power supply unit dimensioning

The motor's current consumption depends on the defined motor currents, the available power and the actual motor being used.

Example	
Order number of the motor	80MPD5.300S000-01
Configured current in the motor module	3 A
Supply voltage of the motor module	48 VDC
Motor load	1 Nm

Table 3: Power supply unit dimensioning example - Basic data

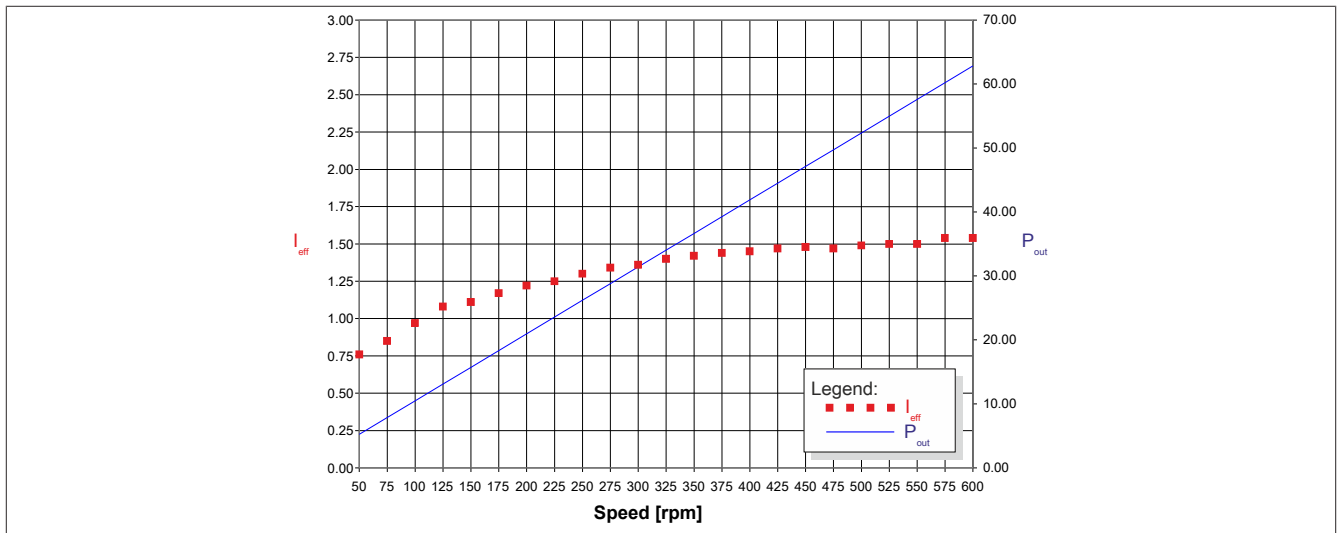


Figure 1: Power supply unit dimensioning example - Power/Speed relationship

The example is based on a constant load throughout the entire speed range.

An increase in the motor load causes an increase in the effective current of the I/O power supply.

## 2.10 Fuse protection

Line protection must be provided in the power supply line via a circuit breaker or fuses. In general, dimensioning the supply line and overcurrent protection depends on the structure of the power supply (modules can be connected individually or in groups).



### Information:

**The effective current for the power supply depends on the load but is always less than the motor current. Make sure the maximum nominal current of 10 A is not exceeded on the power supply terminals of the power unit.**

When choosing a suitable fuse, the user must also account for characteristics such as aging effects, temperature derating, overcurrent capacity and the definition of the rated current, which can vary by manufacturer and type. In addition, the fuse that is selected must also be able to handle application-specific characteristics (e.g. overcurrent that occurs in acceleration cycles).

The cross section of the mains power input and the rated current of the used fuse are chosen according to the current-carrying capacity such that the permissible current-carrying capacity of the selected cable cross section (depending on wiring, see table) is greater than or equal to the current load in the mains power input. The rated current of the fuse protection must be less than or equal to the permissible current-carrying capacity of the selected cable cross section (depending on the how it is installed, see table):

$$I_{\text{Mains}} \leq I_{\text{Fuse}} \leq I_z$$

Mains                      Fuse                      Line/Cable

Line cross section [mm <sup>2</sup> ]	Current-carrying capacity of cable cross section $I_z$ / rated current of fuse $I_b$ [A] depending on the type of wiring at an ambient air temperature of 40°C per EN 60204-1			
	B1	B2	C	E
1.5	13.5 / 13	13.1 / 10	15.2 / 13	16.1 / 16
2.5	18.3 / 16	16.5 / 16	21 / 20	22 / 20

Table 4: Cable cross section of the mains power input depending on the type of wiring

The tripping current of the fuse is not permitted to exceed the rated current of the fuse  $I_b$ .

Type of wiring	Description
B1	Wires in conduit or cable duct
B2	Cables in conduit or cable duct
C	Cables or lines on walls
E	Cables or lines on open-ended cable tray

Table 5: Type of wiring used for the mains power input

## 2.11 Energy regeneration from the voltage

If voltage is regenerated during generator operation of the motor, the built-in Transil diode may be overloaded and the module could be irreparably damaged as a result. The following recovery values are therefore not permitted to be exceeded:

- 6 W at more than 53 V



### Notice!

**Overshoot of the limit values must not be avoided by means of suitable technical measures or by disconnecting cables during maintenance tasks.**

## 3 Function description

### 3.1 Integrated motor detection

The stepper motor module can identify the connected motor by the coil characteristics. This makes it possible to detect not only wiring errors, but also incorrect motor types being used mistakenly.

The function depends on the set operating mode (see bit 11 in register ["Motor configuration" on page 39](#)).

#### Normal operating mode

The value is an indicator of how long the current has been applied in the motor windings.

This depends on:

- Level of current being applied
  - Amplitude of operating voltage
  - The inductance and resistance of the motor winding.
- These two influences characterize a motor type.

Notes	
1)	To achieve reproducible results, the measurement must be made under the following defined conditions:
a)	Operation with holding current
b)	At standstill
c)	Motors must be in a half-step position (phase A with full current, phase B with no current).
2)	Conditions 1b) and 1c) are present after a reset/power-up of the SM module. Immediately afterwards, when the holding current is applied to the motors for the first time (at a standstill), the duration for applying the current is measured. This is therefore a suitable time to read the motor identification register in the application.
3)	The optimal operating point for motor identification (depending on the current used) must be determined by users based on experience.

#### Extended operating mode

After successful measurement, the time required to apply a current increase of  $\Delta I = 1\text{ A}$  to a motor winding is returned in microseconds.

This depends on:

- Operating voltage
- Inductance and resistance of the motor winding

Measurement procedure	
1)	To achieve reproducible results, the measurement must be made under the following defined conditions:
a)	Motor is at standstill.
b)	The motor must be in a half-step position (phase A fully powered, phase B not powered). This means the internal position counter on the SM module must have a value that fulfills the following conditions: <ul style="list-style-type: none"> <li>• Full steps are divisible by 4.</li> <li>• Microsteps = 0</li> </ul>
2)	Condition 1b) is fulfilled after a the SM module is reset or switched on. Immediately afterwards, when the holding current is applied to the motor for the first time (at standstill), the duration for applying the current is measured. This is therefore a suitable time to read the motor identification register in the application.
3)	The current range from approximately 1/3 of the nominal current up to the nominal current is used as operating range for determining the motor identifier.



#### Information:

The registers are described in ["Motor identification" on page 57](#).

## 3.2 Currents independently configurable

Due to the individual adjustment of the coil currents, the motor is only operated with the current it actually needs. The required motor voltage is automatically set via the constant current control of the module and the provided winding resistance of one phase of the motor.

This simplifies the selection of the available motors and prevents unnecessary heating. Because this affects energy consumption and thermal load, the effects are positive on the service life of the complete system. Complete flexibility is achieved through the use of independently adjustable holding, maximum and nominal current values. The current for microsteps is automatically adjusted to the configured current values.

The holding current, nominal current and maximum current registers are used to configure the desired motor current. The nominal motor current is entered in the nominal current register according to the motor's data sheet.

Reasonable values:

- Holding current < Nominal current < Maximum current



### Information:

**The maximum current must always be configured greater than or equal to the nominal current.**

Register	Description
Nominal current	Current during operation at constant speed
Maximum current	Current during short acceleration phases if a higher motor torque is required. In mode "Homing", the nominal current is always used instead of the maximum current, even in acceleration phases.
Holding current	Current consumption for phases in which less torque is required (e.g. at standstill). This reduces the amount of heat generated by the motor.

When the current changes to a weaker value (e.g. when transitioning from the acceleration phase to the constant speed mode), the stronger current is maintained for an additional 100 ms. The following priority applies regardless of the values actually set: Maximum current before nominal current before holding current.



### Information:

**The registers are described in "Configuring currents (function model 0)" on page 41 and "Configuring currents (function models 3 and 254)" on page 41.**

## 3.3 Stall detection

The module is equipped with integrated sensorless load measurement for the motor axis. This functionality is particularly useful for detecting a "stall condition" (e.g. if the motor moves against the endpoint during a homing procedure). It is not suitable for torque monitoring during dynamic movements.

### Stall threshold value

The threshold value valid for the motor must be determined individually since the result of the load measurement depends on various influences.

- Motor speed: A higher speed results in higher measured values.
- Speeds at which motor resonances occur that falsify the load measurement must be avoided.
- Motor accelerations that generate a dynamic load and thus also falsify the measurement must be avoided.
- In particular, it is important to note that mixed decay mode must be optimized for reliable stall detection (see "Mixed decay threshold" on page 42).

The higher the load measured value, the lower the load. This means that a stall condition is detected if the load measured value falls below the trigger threshold for stall detection.

## Function description

### Mixed decay threshold

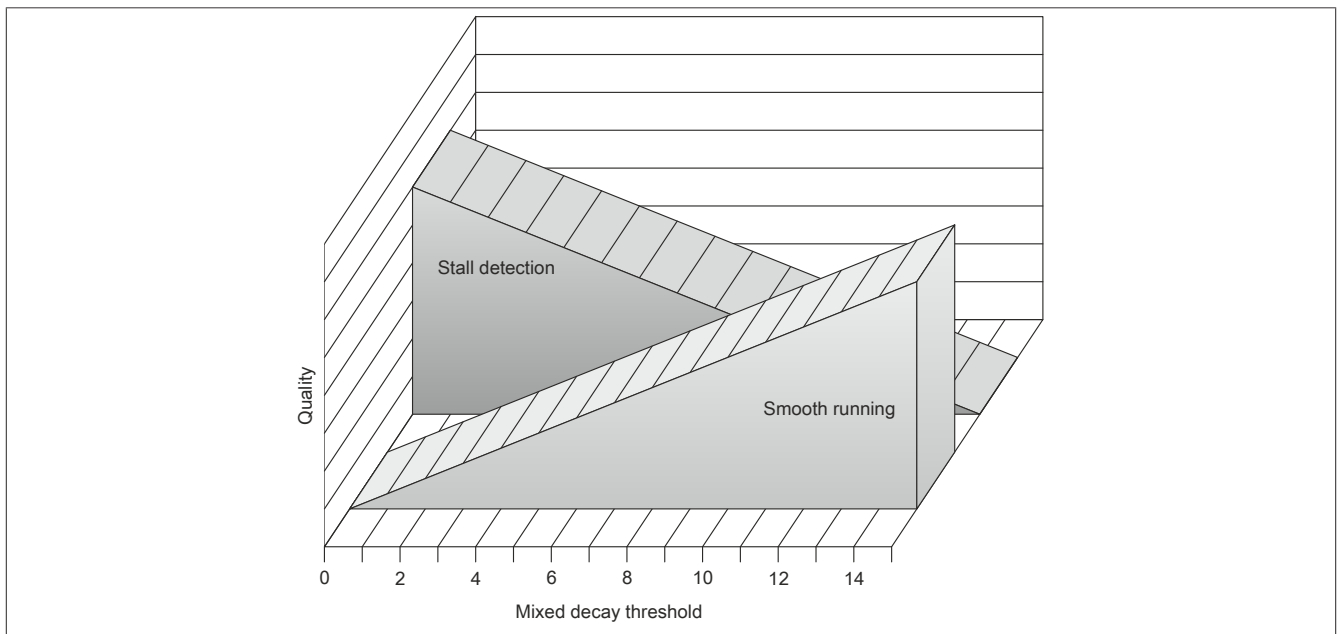
The mixed decay module ensures the best possible sinusoidal current curve in the individual phases of the stepper motor, particularly in the case of rapid current changes and low current values.

Mixed decay is disruptive for reliable stall detection, however. This is why the mixed decay threshold can be used to disable mixed decay mode at the time of stall detection (motor load measurement). The smaller the set mixed decay threshold, the larger the range regarding the time of the motor load measurement in which mixed decay is disabled.

Mixed decay mode is always enabled with a mixed decay threshold of 15.

### Relationship between stall detection and mixed decay

Depending on the application and the motor used, satisfactory smooth running with simultaneous stall detection functionality can be achieved by setting the mixed decay threshold to a value between 1 and 14. This represents a compromise between smooth running and stall detection quality and must be determined during commissioning.



### Information:

Registers are described in "[Stall detection](#)" on page 41.



### 3.4 Homing

Homing can be carried out in forward and reverse direction.

Before homing can be performed, the motor must be at a standstill.

If the homing condition occurs, the motor stops and the values of the position counter that are valid at the moment when the homing condition occurs are applied as the homed zero position.

Whether homing should take place via low/high level on the digital input, stall or unconditionally must be set in the homing configuration.

#### Homing via digital input

**Case 1:** Active homing level not yet reached → Motor not yet at end position:

Movement continues at the homing speed in the homing direction until the active level for "Stop homing" is on the input.

**Case 2:** Active homing level already reached → Motor at end position:

Movement continues at the homing speed against the homing direction until the active level for "Stop homing" is no longer on the digital input. Movement continues at the homing speed in the homing direction until the active level for "Stop homing" is on the digital input again.

#### Homing during stall

Movement continues in the homing direction until a stall is detected. When a stall is detected, the value of the position counter is applied as the homed zero position within one millisecond. The motor is then stopped abruptly (not using the deceleration ramp). However, it can take up to 25 ms to stop the motor because the ramp generator runs with a configurable internal cycle of up to 25 ms.

In order to prevent unwanted homing due to brief stalling, an additional delay time can be defined for stall detection. Homing is only performed after the delay time has elapsed.

In this mode, the nominal current is always used instead of the maximum current, even in acceleration phases.

To test the responsiveness of this homing mode, the motor load value used for identifying a stall can be made visible in the status word.

#### Immediate homing

The current values of the position counter are immediately applied as the homed zero position (no motor movement).



#### Information:

Registers are described in ["Homing" on page 47](#).

### 3.5 Limitations

Limitations can be implemented both in hardware using limit switches and in software using software limits.

#### Negative/Positive limit switch:

When one of the limit switches is reached, a warning is triggered and the speed is decelerated to 0. There is no state change of "Device control state machine". This keeps current flowing to the motor.

The error that occurred can be read from the error code register. Normal operation can be resumed through acknowledgment of the warning. This will not restrict motor movement to a specific direction and the limit switch will not be triggered until the next active edge.

#### Overshooting the limit switch while braking

The limit switches are not linked with the corresponding direction of movement. If the limit switch is traversed, another error will be triggered when reversing after acknowledging the initial error.

#### Direction monitoring

If this function is enabled, then the two limit switches will be linked with the respective direction of movement. This means that the negative limit switch is only triggered in the negative and the positive limit switch only in the positive direction of movement (specified direction).

This prevents specifying a movement in the incorrect direction when direction monitoring is enabled and limit switches are active.



#### Warning!

**If the motor is wired incorrectly with this configuration (incorrect direction of movement), then the limit switch will not be triggered and the actual correct direction of movement will be denied. This will also be the case when the limit switch connections are reversed.**

#### Monitoring software limits

This function is enabled if at least one of the two software limit registers is not equal to zero.

This limit monitoring is effective in all positioning modes. Position overflow is not possible when this function is enabled. Movement is always contained within the two limits.

If a position is specified that overshoots/undershoots the software limits or in the event of an invalid configuration (minimum > maximum), bit "Internal limit active" is set in the status word. The motor movement will be stopped until a position is specified within the limits.



#### Information:

**Monitoring software limits works only when in connection with the following CANopen bus controllers:**

- X20BC0043-10
- X20BC0143-10
- X67BC4321-10
- X67BC4321.L08-10
- X67BC4321.L12-10



#### Information:

The registers are described in "[Limitations](#)" on page 47.

## 3.6 Motion generator

### Mode

The module can independently generate a number of different movements based on specified parameters:

- [Position mode](#)
- [Velocity setpoint](#)
- [Homing](#)

Information	
	No mode selected
<b>Positioning</b>	
	<a href="#">Velocity setpoint</a>
	<b>Position mode</b> Depending on bit 0 in the general configuration, the position mode behaves as follows: <ul style="list-style-type: none"> <li>• Without extended control word: Move to target position as soon as the target position is changed.</li> <li>• Position mode with extended control word: Move to the target position as described in "Extended control word".</li> </ul>
<b>Moving to absolute positions</b>	
	<a href="#">Home position with residual distance</a>
	<a href="#">Moving to the target position</a> if digital input is set
	<a href="#">Moving to a fixed position</a> depending on digital input
	<a href="#">Moving to a fixed position</a> (first or second position)
<b>Homing</b>	
	<a href="#">Homing in the forward direction</a>
	<a href="#">Homing in the reverse direction</a>
<b>Applying positions</b>	
	<a href="#">Applying the actual position</a> (homing or actual position)



### Information:

**For all modes: Bit "Target reached" is set in when the current action is ended (i.e. when the position or speed is reached, depending on the mode).**

**A new position or speed can be specified even before the current action is finished.**

### Velocity setpoint

The desired velocity setpoint is specified to the module (microsteps per cycle).

Observing the maximum permissible acceleration, the motor moves with a ramp to the desired speed setpoint and maintains this speed until a new speed setpoint is specified.

## Function description

### Position mode

A position setpoint is specified. The motor is then moved to this new position. This is done with a ramp function that accounts for the defined maximum speed and acceleration values.

The position setpoint can also be changed during an active positioning procedure.

The position setpoint is specified in microsteps (1/256 of a full step).

How the position is applied can be controlled in the configuration by bit 0:

- If bit 0 equals 0 (no extended control word), the position setpoint will be applied as soon as it is not equal to the current position. The new position is then used for the movement.
- If bit 0 equals 1, the position setpoint is accepted as described in "Extended control word".

### Extended position mode

Position mode with extended control word behaves like the previously described position mode (without the extended control word), but the new position setpoint is applied according to the extended control word.

### Extended control word

Additional commands can be sent depending on the state of the module:

- (Do not) Apply the new target position.
- Process or interrupt the current positioning and start the next positioning.
- Define the target position as an absolute or relative value.
- Stopping a movement

### Relative position setting

If bit *abs / rel* in extended control word is set, then the target position is interpreted as a relative value. At each New setpoint trigger, the target position will be increased by this value (or decreased if the value is negative).

If the mode changes between the position settings, relative movement will then proceed starting at the last specified position. The position setpoint mode is initialized with 0 when the module is started.

### Specifying the target position

The target position can be defined in 2 different ways:

Type of setpoint definition	Description
Single setpoint	After the target position is reached, bit Target reached is set in the status word. A new target position (setpoint) is then defined. The drive stops at each target position before starting the movement to the next target position.
Set of setpoints	After the target position has been reached, the movement to the next target position is started immediately without stopping the drive. It is therefore possible to initiate a new positioning by specifying another target position during active positioning.

The two options "Single setpoint" and "Set of setpoints" are controlled by the timing of bits *New setpoint* and *Change set immediately* in the extended control word and *Setpoint acknowledge* in the extended status word register.

These bits can be used to create a Request-Response mechanism. This makes it possible to specify a target position while a previous position specification is still being processed.

### Specifying the target position

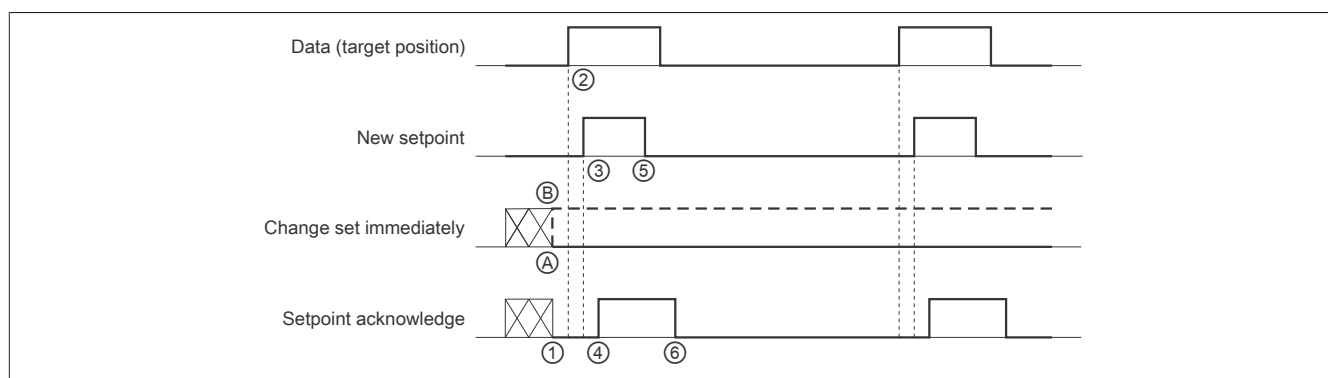


Figure 2: Principle for applying the setpoint

### Transferring a new setpoint:

- 1) If bit Setpoint acknowledge in the extended status word is 0, the module will accept a new target position.
- 2) Specify the new target position.
- 3) A rising edge on bit New setpoint in the extended control word indicates that the new target position is valid and can be used for the next positioning movement.
- 4) After the module has received and saved the new target position, bit Setpoint acknowledge is set to 1 in register Status word.
- 5) Now the controller can reset the New setpoint bit to 0.
- 6) Then the module resets bit Setpoint acknowledge to 0 to signal when a new target position is accepted.

### Position specification "Single setpoint"

If bit Change set immediately is set to 0 (Ⓐ in figure "Principle for applying the setpoint"), then the module is operating with position specification Single setpoint. This mechanism results in a speed of 0 when the motor reaches target position  $x_1$  at time  $t_1$ . After the controller has been notified that the setpoint has been reached, the next target position  $x_2$  will be processed at time  $t_2$  and reached at  $t_3$ .

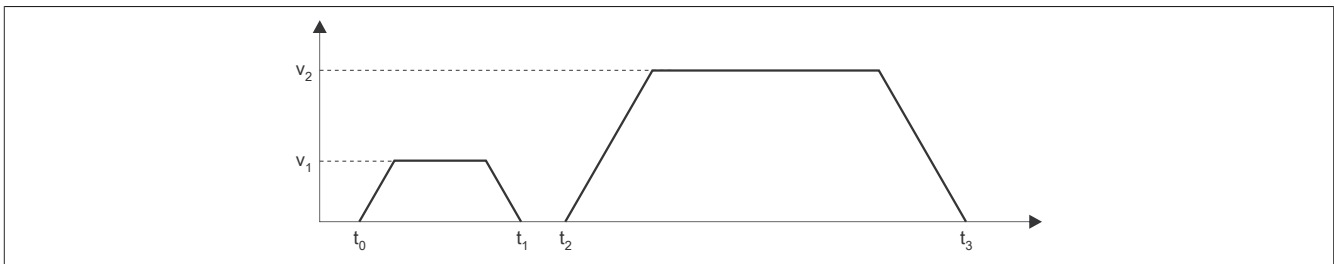


Figure 3: Ramp characteristics in mode Single setpoint

### Position specification "Set of setpoints"

If bit Change set immediately is set to 1 (Ⓑ in figure "Principle for applying the setpoint"), then the module is operating with position specification Set of setpoints. This means that the module receives the first target position at  $t_0$ . A second target position is received at time  $t_1$ . The drive immediately adapts the current movement to the new target position.

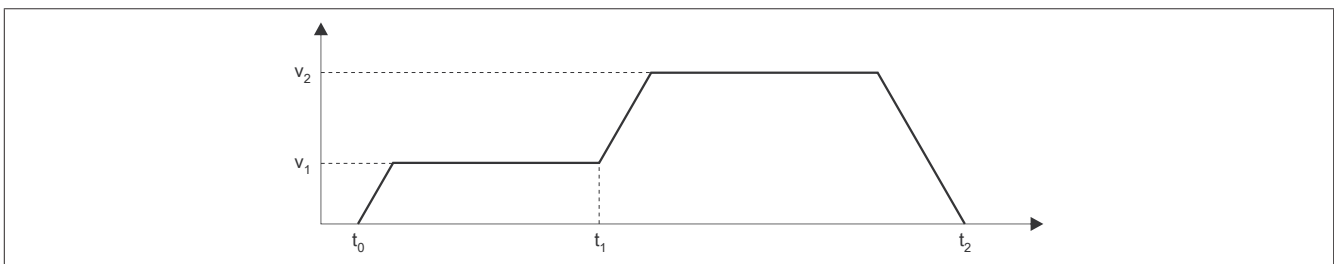


Figure 4: Ramp characteristics in mode Set of setpoints

### Home position with residual distance

In the event of a rising or falling edge on digital input 3 (motor 1) or 6 (motor 2), the current target position is discarded and only a set number of steps is moved forward or backward.

Negative values are also permitted for the set offset.

A new target position is no longer accepted after the trigger event. There must first be a switch made to mode 0 and then back to mode -121.

Bit "Target reached" in the status word is only set to 1 when the end position (after the trigger event) is reached.

The homing configuration defines whether a rising or falling edge of the digital input is used as a trigger.

The [reversing loop](#) is not active in this mode. Any configured values are ignored.

## Function description

### Moving to the target position

A preset position setpoint is approached on a rising edge of digital input 3 (motor 1) or 6 (motor 2).

A changed position setpoint is only applied on a new rising edge of the associated digital input. This can also take place during the ongoing positioning process and is then immediately effective.

In addition, a [reversing loop](#) can be set.

### Moving to a fixed position

2 fixed positions can be transferred acyclically to the module that are approached differently depending on the mode.

- Mode -124:  
"1" on digital input 3 (motor 1) or 6 (motor 2) moves to the first fixed position.  
"0" on digital input 3 (motor 1) or 6 (motor 2) moves to the second fixed position.  
Switching is possible during an active positioning procedure.
- Mode -125: Move to the first fixed position
- Mode -126: Move to the second fixed position

In addition, a [reversing loop](#) can be set.

### Applying the actual position

Before a position can be applied, the motor must be at a standstill and physically located at the point for which the position being set should be applied. The new position is applied when the state machine is in state "Operation enable".

Depending on the mode, the following positions can be applied:

- The set target position is applied as the current actual position in the internal position counter.
- The current actual position is modified such that the specified position exists at the reference. If moved to this position, the motor is at the home position. The home position in the referenced position register is also set to this value. Before this mode is called, the motor must be at a standstill and the home position must have been determined using the positive/negative homing mode.

### Reversing loop

This parameter is only available for absolute positioning.

A reversing loop can be used to avoid mechanical backlash and different movement tolerances.

If the value is not equal to 0, the target position is approached directly when coming from one direction; when coming from the other direction, the target position is initially overshoot by the configured number of steps before finally moving to the target position. The target position is therefore always approached from the same direction. The sign of the defined value determines the direction in which the reversing loop runs.

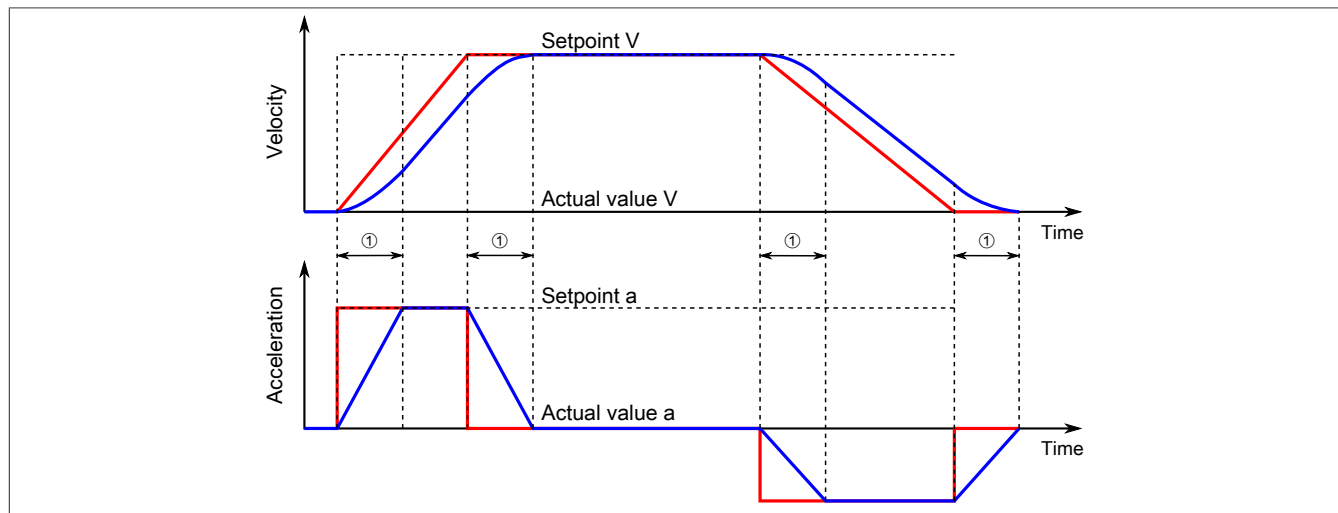
- Positive sign: Forward movement
- Negative sign: Backward movement

## Jerk limitation

To avoid noticeable jumps when starting the motor or when the acceleration changes (e.g. from 1 m/s<sup>2</sup> to 3 m/s<sup>2</sup>), a jerk time (①) can be defined. This indicates the number of cycles during which the acceleration is adapted to the new setpoint. If more than 80 cycles are entered, they are limited to 80.

Changes made to the jerk time while the motor is running are only applied when the preset position is reached or the next motor standstill.

The following diagram shows the change of acceleration and speed with (blue line) and without (red line) jerk limitation time.



① Set jerk time in cycles

## 3.7 Counters

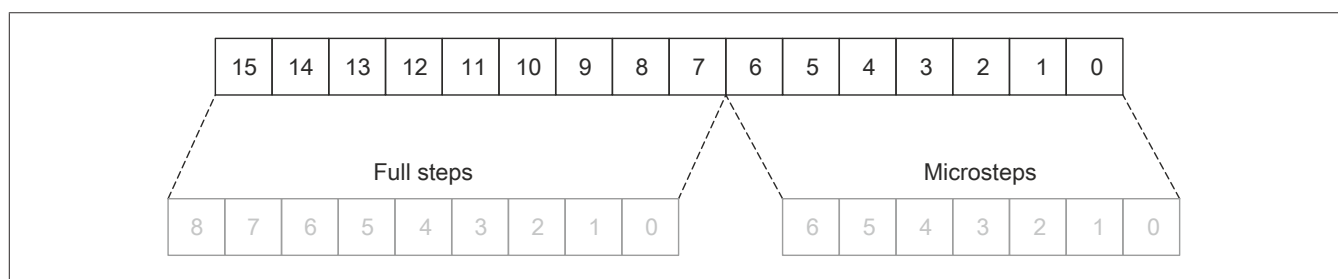
The module has 2 different modes that can be used to determine the position.

### Internal position counter

The internal position counter is the position calculated by the module (position setpoint). This is a cyclic 16-bit counter.

The lowest 5 to 8 bits represent microsteps, and the higher bits represent full steps. In function model Standard with SDC, this value is defined as "8-bit microstep" and cannot be changed.

Example for the format of the internal position counter with 7-bit microsteps:



### ABR counter

This counter is a cyclic 16-bit counter. The relationship between this counter and the internal position counter depends on the resolution of the ABR encoder and the microsteps defined for the internal position counter.

To evaluate the counter values, latch events can be defined where the counter values are frozen and transferred to specific registers.



### Information:

The registers are described in "[Counter configuration](#)" on page 43.

### 3.8 Digital inputs

The module is equipped with 6 digital inputs that can additionally be used as ABR inputs.

Function			
Counter input 1		Counter input 2	
Digital input 1	ABR1 - A	Digital input 4	ABR2 - A
Digital input 2	ABR1 - B	Digital input 5	ABR2 - B, trigger input
Digital input 3	ABR1 - R	Digital input 6	ABR2 - R



#### Information:

The register is described in ["Input counter value" on page 51](#).

### 3.9 Automatic shutdown

To prevent damage to the module or motor, both the voltage of the module power supply and the module temperature are monitored. In addition, the communication of the module with the PLC can be monitored.

#### 3.9.1 Shutdown in the event of overvoltage/undervoltage

The module power supply voltage is monitored. Its status can be read. An error is reported in the event of a voltage greater or less than the limit values.

If the supply voltage in the module rises above the limit value, e.g. due to regenerative operation, or falls below the limit value, then the motor output is cut off. The motor output is reactivated as soon as the supply voltage is back within the valid range.

This function is supported starting with the following hardware revision or runtime version:

- Hardware revision B0 or later
- Firmware version I2.88 or later

#### Limit values for the supply voltage

	Drive cut off	Drive switched back on
Lower limit	<18 V	>50 V



#### Information:

The error message is described under register ["Error state" on page 52](#).

#### 3.9.2 Shutdown in the event of overtemperature

If the module temperature reaches or overshoots the limit value, the module performs the following actions:

- Sets the "overtemperature" error bit
- The outputs are cut off.

As soon as the temperature falls below 83°C, the error bit is automatically cleared by the module and the outputs are put back into operation.

Module temperature limit value
85°C



#### Information:

The error message is described under register ["Error state" on page 52](#).



### 3.9.3 Monitoring the module communication

The communication between the module and controller can be monitored with SDC life sign monitoring.

After life sign monitoring is enabled, counter and timestamp information is exchanged and evaluated between the module and controller. If bit "SDC information" is additionally enabled, bit "EncOK01" is displayed in the Automation Studio I/O mapping. This bit is permanently linked to bit ModulOK and always indicates its value.

If the [NetTime timestamp](#) specified by the controller is in the past, then an error is triggered for the motor axis (only when the motor is switched on). The module performs the following steps:

- 1) The controller is informed of the error using the drive bit (DrvOK) = 0.
- 2) Braking at the configured nominal current with speed setpoint = 0
- 3) Wait for the configured switch-off delay to expire
- 4) Switch off the motor current

When the timestamp is back within the valid range, the motor can be started up again by a rising edge on bit DriveEnable.



#### Information:

The registers are described in ["SDC configuration" on page 40](#) and ["Motor current" on page 49](#).

This allows the moment that events occur to be determined system-wide with microsecond precision. Upcoming events can also be executed precisely at a specified moment.



### 3.10.1 Time information

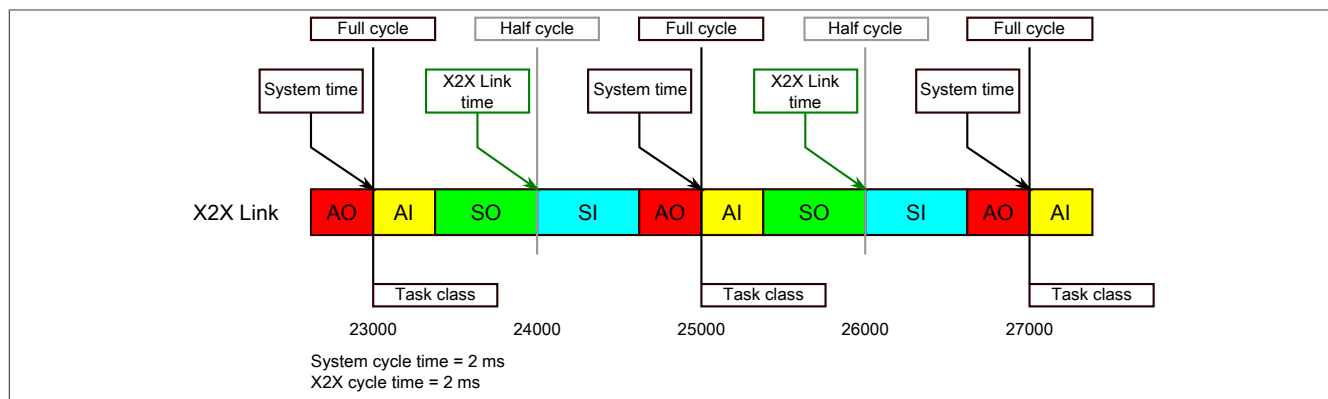
- System time (on the PLC, Automation PC, etc.)
- X2X Link time (for each X2X Link network)
- POWERLINK time (for each POWERLINK network)
- Time data points of I/O modules

Current time information in the application can also be determined via library `AsIOTime`.

### 3.10.1.1 Controller data points

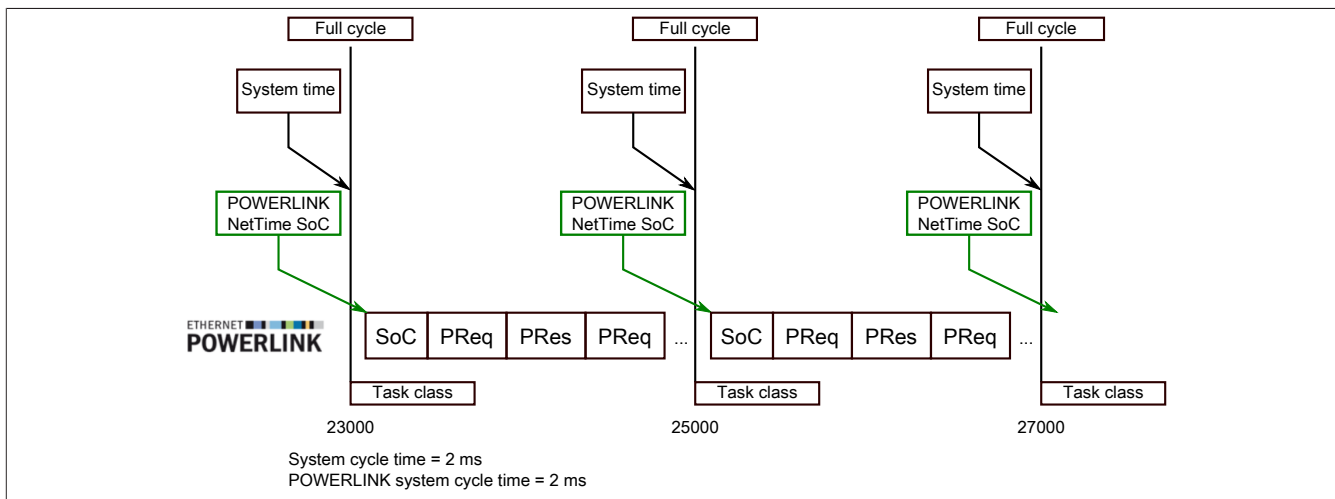
The NetTime I/O data points of the controller are latched to each system clock and made available.

### 3.10.1.2 X2X Link - Reference time point



In the example above, this results in a difference of 1 ms, i.e. if the system time and X2X Link reference time are compared at time 25000 in the task, then the system time returns the value 25000 and the X2X Link reference time returns the value 24000.

### 3.10.1.3 POWERLINK - Reference time point

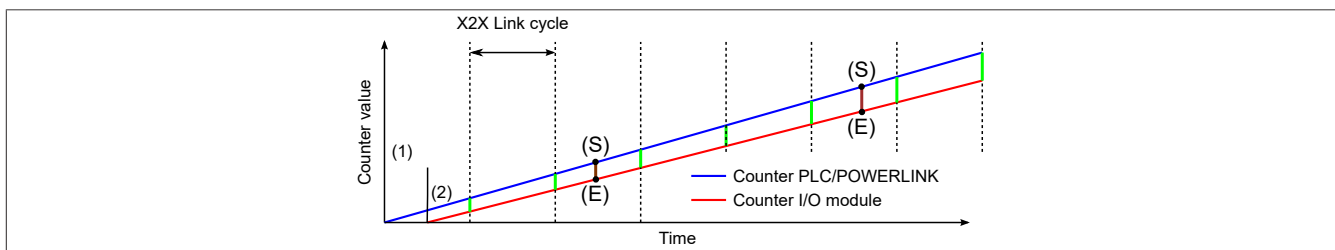


The POWERLINK reference time point is always calculated at the start of cycle (SoC) of the POWERLINK network. The SoC starts 20 µs after the system clock due to the system. This results in the following difference between the system time and the POWERLINK reference time:

POWERLINK reference time = System time - POWERLINK cycle time + 20 µs

In the example above, this means a difference of 1980 µs, i.e. if the system time and POWERLINK reference time are compared at time 25000 in the task, then the system time returns the value 25000 and the POWERLINK reference time returns the value 23020.

### 3.10.1.4 Synchronization of system time/POWERLINK time and I/O module



At startup, the internal counters for the controller/POWERLINK (1) and the I/O module (2) start at different times and increase the values with microsecond resolution.

At the beginning of each X2X Link cycle, the controller or POWERLINK network sends time information to the I/O module. The I/O module compares this time information with the module's internal time and forms a difference (green line) between the two times and stores it.

When a NetTime event (E) occurs, the internal module time is read out and corrected with the stored difference value (brown line). This means that the exact system moment (S) of an event can always be determined, even if the counters are not absolutely synchronous.

#### Note

The deviation from the clock signal is strongly exaggerated in the picture as a red line.

### 3.10.2 Timestamp functions

NetTime-capable modules provide various timestamp functions depending on the scope of functions. If a timestamp event occurs, the module immediately saves the current NetTime. After the respective data is transferred to the controller, including this precise moment, the controller can then evaluate the data using its own NetTime (or system time), if necessary.

#### 3.10.2.1 Time-based inputs

NetTime Technology can be used to determine the exact moment of a rising edge at an input. The rising and falling edges can also be detected and the duration between 2 events can be determined.



**Information:**

**The determined moment always lies in the past.**

#### 3.10.2.2 Time-based outputs

NetTime Technology can be used to specify the exact moment of a rising edge on an output. The rising and falling edges can also be specified and a pulse pattern generated from them.



**Information:**

**The specified time must always be in the future, and the set X2X Link cycle time must be taken into account for the definition of the moment.**

#### 3.10.2.3 Time-based measurements

NetTime Technology can be used to determine the exact moment of a measurement that has taken place. Both the starting and end moment of the measurement can be transmitted.

## 4 Commissioning

### 4.1 Using the module on the bus controller

Function model 254 "Bus controller" is used by default only by non-configurable bus controllers. All other bus controllers can use other registers and functions depending on the fieldbus used.

For detailed information, see section "Additional information - Using I/O modules on the bus controller" in the X67 user's manual (version 3.30 or later).

#### 4.1.1 CAN I/O bus controller

The module occupies 2 analog logical slots on CAN I/O.

### 4.2 Setting full step limit values

A rotational speed is configured with the [full step limit value](#). When the defined speed has been reached, the drive will automatically change from microstep to full step mode. This makes it possible to optimize the torque at higher speeds, while microstep mode ensures optimal radial runout at lower speeds.

It does not make sense to switch to full step mode at a standstill since fine positioning would then no longer be possible. For this reason, the value 0 is interpreted as deactivating full step mode, i.e. the motor is always operated in microstep mode.

#### Example

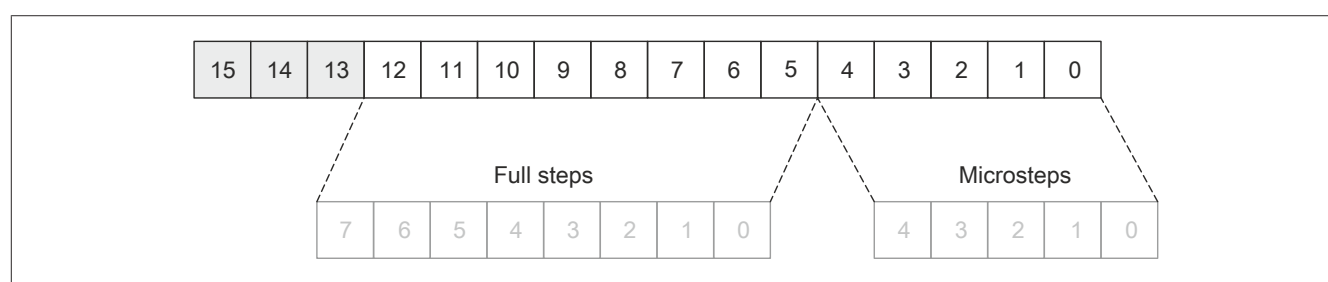
Microstep mode should change to full step mode at 500 steps/second. A [full step limit value](#) of 500 for a motor with 200 steps/revolution corresponds to a speed of:

$$T^{-1} = \frac{500 \text{ steps/second}}{200 \text{ steps/rotation}} = 2.5 \frac{\text{rotations}}{\text{second}} = 150 \text{ min}^{-1}$$

#### Setting the microsteps

Depending on the required resolution and maximum configurable speed, bits 5 and 6 of the ["module configuration"](#) on [page 39](#) can be used to set the bit position at which the 1s position of the full steps starts.

Example for 5-bit microsteps, i.e. bits 5 and 6 of the module configuration are set to binary 00:



(For the meaning of bits 13 to 15, see ["Motor setting"](#) on [page 49](#).)



#### Information:

In operating mode, the following limitation only applies to "Normal mode".

The smallest physical step division that is possible is 1/64 of a full step. Bits with a significance of 1/128 or 1/256 of a full step therefore remain 0. This must be taken into account if this position register is used for controller feedback.

### 4.3 Operating function model "Ramp"

Commands for controlling the module are written to the ["Control word" on page 61](#). The current state of the module is reported in register ["Status word" on page 62](#). The function mode (absolute position, constant speed, homing, etc.) is set in the ["mode register" on page 57](#).

#### 4.3.1 Structure of the control word

Control word bits and their state for the commands of the state machine:

Command	Stall detection	Encoder position sync/async	Current error detection	Warning reset	Motor ID trigger	Reserved	Reserved	Stop	Fault reset	Mode-specific	Mode-specific	Mode-specific	Enable operation	Quick stop	Enable voltage	Switch on
Bit <sup>1)</sup>	15	14	13	12	11	10	9	8	7	6	5	4	3	2	1	0
Shutdown	x	x	x	x	x	0	0	x	0	x	x	x	x	1	1	0
Switch on	x	x	x	x	x	0	0	x	0	x	x	x	0	1	1	1
Disable voltage	x	x	x	x	x	0	0	x	0	x	x	x	x	x	0	x
Quick stop	x	x	x	x	x	0	0	x	0	x	x	x	x	0	1	x
Disable operation	x	x	x	x	x	0	0	x	0	x	x	x	0	1	1	1
Enable operation	x	x	x	x	x	0	0	x	0	x	x	x	1	1	1	1
Fault reset	x	x	x	x	x	0	0	x	↑	x	x	x	x	x	x	x

1) x ... Any, ↑ ... Rising edge

Bits 0, 1, 2, 3 and 7 (light gray in the previous table)	These bits control the state of the <a href="#">"State machine" on page 32</a> according to the commands in the table above.
Fault reset	A rising edge resets errors and warnings (see <a href="#">"State machine" on page 32</a> ).
Stop	0 ... Perform motor movement 1 ... Stop axis with deceleration  This bit is only evaluated if the extended control word is enabled in register <a href="#">"General configuration" on page 44</a> .
CurrentControlEnable	0 ... Load-dependent current control disabled 1 ... Load-dependent current control enabled
Motor ID trigger	A rising edge enables the motor ID measurement.
Warning reset	A rising edge resets warnings (no effect on errors, which are reset using "Fault reset"; the state machine is not affected by this bit).
Current error detection	0 ... Current error detection disabled 1 ... Current error detection enabled
Encoder position sync/async	0 ... Value of the ABR counter on register <a href="#">"Current position (acyclic)" on page 64</a> . Internal position counter of the ramp generator on the "Current position (cyclic)" register. 1 ... Value of the ABR counter on register <a href="#">"Current position (cyclic)" on page 64</a> . Internal position counter of the ramp generator on the "Current position (acyclic)" register.
Stall detection	0 ... Stall detection disabled 1 ... Stall detection enabled

### 4.3.2 Structure of the status word

The individual bits of this register and its states depend on the current state of the state machine:

Status	Reserved / MotorLoadBit 2 1)	Reserved / MotorLoadBit 1 1)	Reserved / MotorLoadBit 0 1)	Mode-specific	Int. limit active	Target reached	Remote	Reserved	Warning	Switch on disabled	Quick stop	Voltage enabled	Fault	Operation enabled	Switched on	Ready to switch on
Bit	15	14	13	12	11	10	9	8	7	6	5	4	3	2	1	0
Not ready to switch on	x	x	x	x	x	x	1	0	x	0	x	0	0	0	0	0
Switch on disabled	x	x	x	x	x	x	1	0	x	1	x	0	0	0	0	0
Ready to switch on	x	x	x	x	x	x	1	0	x	0	1	0	0	0	0	1
Switched on	x	x	x	x	x	x	1	0	x	0	1	1	0	0	1	1
Operation enable	x	x	x	x	x	x	1	0	x	0	1	1	0	1	1	1
Quick stop active	x	x	x	x	x	x	1	0	x	0	0	1	0	1	1	1
Fault reaction active	x	x	x	x	x	x	1	0	x	0	x	0	1	1	1	1
Fault	x	x	x	x	x	x	1	0	x	0	x	0	1	0	0	0

- 1) If bit 7 in register "Stall detection configuration / Mixed decay" on page 46 configuration is set to 1, then the motor load value is returned in bits 13-15 of the status word. Otherwise, these bits are always 0.

#### Information about the status word:

Bits 0, 1, 2, 3, 5 and 6 (light gray in the preceding table)	These bits are set according to the currently active state of the "State machine" on page 32.	
Voltage enabled	Becomes 1 as soon as the motor is energized.	
Warning	Becomes 1 if a warning is detected ("Overcurrent", "Undercurrent"). The type of warning is indicated in register "Error code" on page 63. The highest priority error / warning is shown in each case, with the priority corresponding to the order in the respective table. Warnings can be reset with a rising edge on bit "Warning reset" in the control word.	
Remote	Always 1	
Target reached <sup>1)</sup> , depends on bit 8 (Stop) in Structure of the control word	<b>If Stop = 0</b>	<b>If Stop = 1</b>
	<b>In modes 1, -123, -124, -125 and -126 (absolute positioning):</b> 0...Positioning begins 1...Target has been reached  <b>In mode 2 (constant speed):</b> 0...Motor accelerates/brakes 1...Speed setpoint reached  <b>In modes -127 and -128 (homing):</b> 0...Homing started 1...Homing ended  <b>In mode -122 (set actual position):</b> The bit briefly becomes 0 and immediately becomes 1 again as soon as the position is set.	<b>In all modes:</b> 0...Axis decelerating 1...Axis speed = 0
Internal limit active	0 ... No limit violation 1 ... Internal limit is active (upper/lower software limit violated)	

- 1) If the extended control word in register "General configuration" on page 44 was not enabled, "Target reached" behaves the same as if Stop = 0.

### 4.3.3 State machine

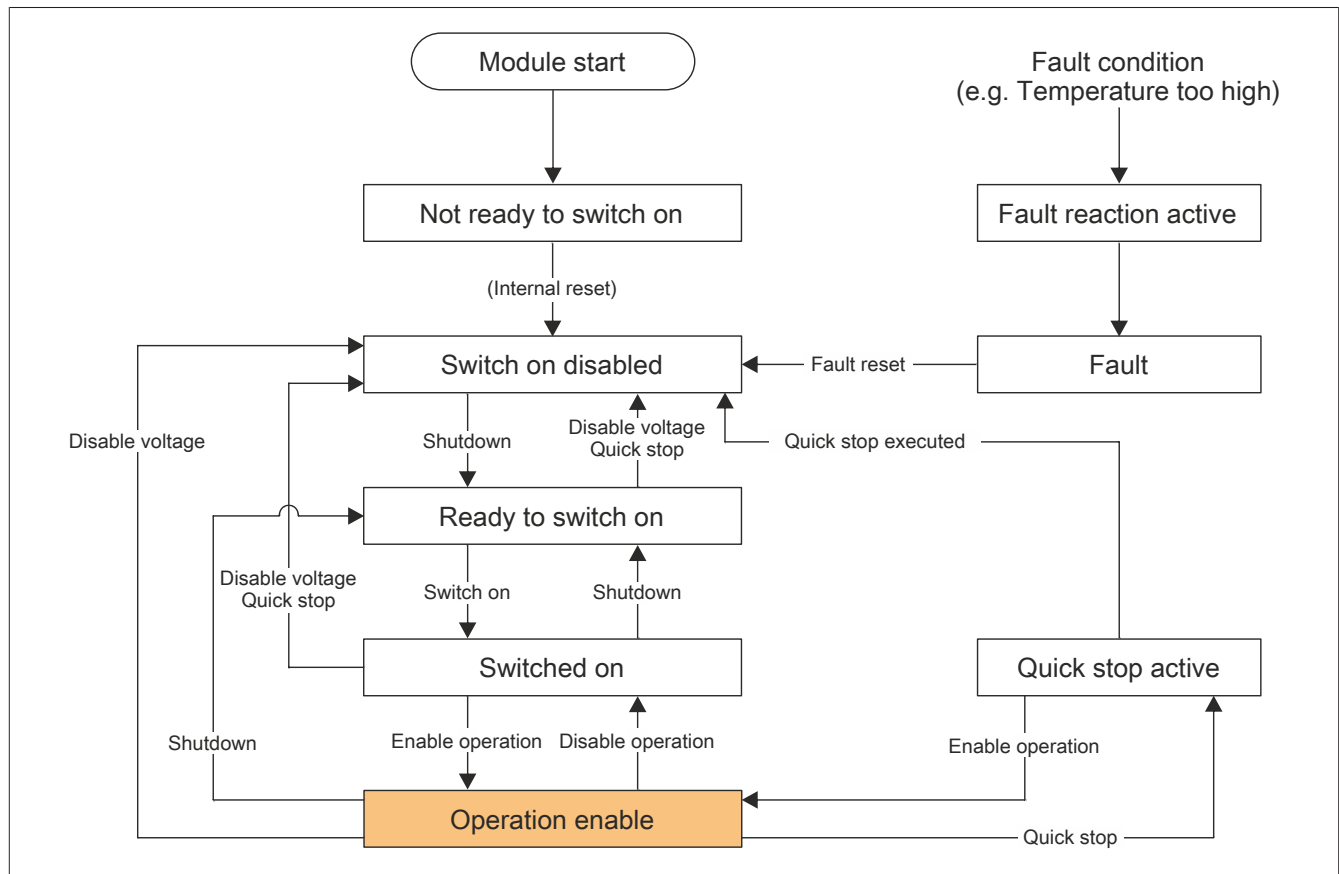
Control of the motor takes place according to the state machine illustrated below. After the module is started, the state machine automatically changes to state "Not ready to switch on". The application then operates the state machine by writing commands to the "Control word" on page 61.

The state machine successively reaches states "Ready to switch on", "Switched on" and "Operation enable" by writing the consecutive commands "Shutdown", "Switch on" and "Enable operation".



#### Information:

**Motor movements are performed according to the setting in register **Mode** only in state "Operation enable".**





State change	Description
Not ready to switch on → Switch on disabled	This state change occurs automatically after starting the module and internal initialization has taken place.
Switch on disabled → Ready to switch on	This state change is initiated by command <code>Shutdown</code> . No others actions are performed.
Ready to switch on → Switch on disabled	This state change is initiated by command <code>Disable voltage</code> or <code>Quick stop</code> . No others actions are performed.
Switched on → Switch on disabled	This state change is initiated by command <code>Disable voltage</code> or <code>Quick stop</code> . The motor voltage is switched off immediately.
Ready to switch on → Switched on	This state change is initiated by command <code>Switch on</code> . The motor voltage is switched on. When this state change occurs for the first time since the module is started, the motor ID measurement is performed before state <code>Switched on</code> is achieved. This can take approximately 1 second.
Switched on → Ready to switch on	This state change is initiated by command <code>Shutdown</code> . The motor voltage is switched off immediately.
Switched on → Operation enable	This state change is initiated by command <code>Enable operation</code> . Motor movements are now performed depending on the defined mode.
Operation enable → Switched on	This state change is initiated by command <code>Disable operation</code> . If in motion, the motor is decelerated with the configured deceleration. Motor voltage remains on in state <code>Switched on</code> .
Operation enable → Ready to switch on	This state change is initiated by command <code>Shutdown</code> . The motor voltage is switched off immediately.
Operation enable → Switch on disabled	This state change is initiated by command <code>Disable voltage</code> . Motor voltage switched off. It is strongly recommended to only make this state change on a stopped motor since regeneration on a motor running at no load can cause an overvoltage error on the DC bus (0x3210).
Operation enable → Quick stop active	This state change is initiated by command <code>Quick stop</code> . If in motion, the motor is decelerated with the configured deceleration. During the deceleration, the state machine remains in state <code>Quick stop active</code> . If the motor comes to standstill, the switch to state <code>Switch on disabled</code> takes place automatically. While the state machine is in state <code>Quick stop active</code> , command <code>Enable operation</code> can be used to switch back to state <code>Operation enable</code> .
→ Fault reaction active	This state change is brought on when an error occurs and cannot be triggered by a command from the user. It can be triggered by an error type classified as "Error" (see <a href="#">Error code</a> ). (Other error types listed as a "warning" only cause bit "Warning" to be set in the status word and do not cause a state change in the state machine.) The motor voltage is cut off, and the state machine then changes immediately to state <code>Fault</code> . The error type is listed in the error code register (see table in <a href="#">Error code</a> ). The highest priority error is shown. The priority corresponds to the order in the error code table.
Fault → Switch on disabled	This state change is initiated by command <code>Fault reset</code> . However, the state only changes if no more errors are present when the command is written. All errors and warnings are reset. The error code register contains 0 or the warning code if a warning is still present.

## 5 Register description

### 5.1 mapp Motion system requirements

This module can be operated with mapp Motion function blocks. The following minimum versions are required for this:

- Automation Studio: 4.7.2
- Automation Runtime: 4.72
- mapp Technology Package: mapp Motion 5.9
- Hardware module upgrade: 2.2.0.0

### 5.2 General data points

In addition to the registers described in the register description, the module has additional general data points. These are not module-specific but contain general information such as serial number and hardware variant.

General data points are described in section "Additional information - General data points" in the X67 System user's manual.

### 5.3 Function model 0 - Standard

Register	Name	Data type	Read		Write	
			Cyclic	Acyclic	Cyclic	Acyclic
Configuration						
Module / Motor configuration						
46	ConfigOutput02 (module configuration)	UINT				•
Configuring currents						
33	ConfigOutput03 (holding current 1)	USINT				•
34	ConfigOutput04 (nominal current 1)	USINT				•
35	ConfigOutput05 (maximum current 1)	USINT				•
36	ConfigOutput06 (holding current 2)	USINT				•
37	ConfigOutput07 (nominal current 2)	USINT				•
38	ConfigOutput08 (maximum current 2)	USINT				•
Counter configuration						
32	ConfigOutput09 (counter configuration)	USINT				•
40	SetCounter01	UINT				•
42	SetCounter02	UINT				•
Stall detection						
44	ConfigOutput01 (stall threshold)	UINT				•
52	ConfigOutput16 (mixed decay threshold)	UINT				•
92	StallDetectMinSpeed01	UINT				•
94	StallDetectMinSpeed02	UINT				•
Reading back the configuration						
33	ConfigOutput03Read (holding current 1)	USINT		•		
34	ConfigOutput04Read (nominal current 1)	USINT		•		
35	ConfigOutput05Read (maximum current 1)	USINT		•		
36	ConfigOutput06Read (holding current 2)	USINT		•		
37	ConfigOutput07Read (nominal current 2)	USINT		•		
38	ConfigOutput08Read (maximum current 2)	USINT		•		
Communication						
Motor detection						
81	MotorIdentTrigger	USINT				•
12	Motoridentification01	UINT		•		
14	Motoridentification02	UINT		•		
74	MotorLoad	USINT	•			
Motor control						
16	Motor1Step0	UINT			•	
18	Motor1Step1	UINT			•	
20	Motor1Step2	UINT			•	
22	Motor1Step3	UINT			•	
24	Motor2Step0	UINT			•	
26	Motor2Step1	UINT			•	
28	Motor2Step2	UINT			•	

Register	Name	Data type	Read		Write	
			Cyclic	Acyclic	Cyclic	Acyclic
30	Motor2Step3	UINT			•	
<b>Input state</b>						
4	StatusInput	USINT	•			
<b>Error handling</b>						
4	Module power supply error ModulePowerSupplyError	USINT Bit 0	•			
10	Error state StallError01	UINT Bit 0		•		
	OvertemperatureError01	Bit 1				
	OpenLoadError01	Bit 2				
	OvercurrentError01	Bit 3				
	StallError02	Bit 4				
	OvertemperatureError02	Bit 5				
	OpenLoadError02	Bit 6				
	OvercurrentError02	Bit 7				
54	Error acknowledgment ClearError01	USINT Bit 0			•	
	ClearError02	Bit 1				
<b>Positioning</b>						
0	Position1Sync	UINT	•			
2	Position2Sync	UINT	•			
6	Position1async	UINT		•		
8	Position2async	UINT		•		
<b>Module information</b>						
80	Temperature	SINT		•		

## 5.4 Function model 1 - ARNC0

Register	Name	Data type	Read		Write	
			Cyclic	Acyclic	Cyclic	Acyclic
Configuration						
Module / Motor configuration						
46	ConfigOutput02 (module configuration)	UINT				•
Configuring currents						
33	ConfigOutput03 (holding current 1)	USINT				•
34	ConfigOutput04 (nominal current 1)	USINT				•
35	ConfigOutput05 (maximum current 1)	USINT				•
36	ConfigOutput06 (holding current 2)	USINT				•
37	ConfigOutput07 (nominal current 2)	USINT				•
38	ConfigOutput08 (maximum current 2)	USINT				•
Counter configuration						
32	ConfigOutput09 (counter configuration)	USINT				•
Stall detection						
44	ConfigOutput01 (stall threshold)	UINT				•
52	ConfigOutput16 (mixed decay threshold)	UINT				•
84	FullStepThreshold01	UINT				•
86	FullStepThreshold02	UINT				•
92	StallDetectMinSpeed01	UINT				•
94	StallDetectMinSpeed02	UINT				•
Reading back the configuration						
33	ConfigOutput03Read (holding current 1)	USINT		•		
34	ConfigOutput04Read (nominal current 1)	USINT		•		
35	ConfigOutput05Read (maximum current 1)	USINT		•		
36	ConfigOutput06Read (holding current 2)	USINT		•		
37	ConfigOutput07Read (nominal current 2)	USINT		•		
38	ConfigOutput08Read (maximum current 2)	USINT		•		
Communication						
Motor detection						
81	MotorIdentTrigger	USINT				•
12	Motoridentification01	UINT		•		
14	Motoridentification02	UINT		•		
74	MotorLoad	USINT	•			
Motor control						
16	Motor1Step0	UINT			•	
18	Motor1Step1	UINT			•	
20	Motor1Step2	UINT			•	
22	Motor1Step3	UINT			•	
24	Motor2Step0	UINT			•	
26	Motor2Step1	UINT			•	
28	Motor2Step2	UINT			•	
30	Motor2Step3	USINT			•	

## Register description

Register	Name	Data type	Read		Write	
			Cyclic	Acyclic	Cyclic	Acyclic
Input state						
4	Input counter value	USINT	•			
	StatusInput01	Bit 2				
	...	...				
	StatusInput06	Bit 7				
Error handling						
4	Input counter value	USINT	•			
	ModulePowerSupplyError	Bit 0				
10	Error state	UINT	•			
	StallError01	Bit 0				
	OvertemperatureError01	Bit 1				
	OpenLoadError01	Bit 2				
	OvercurrentError01	Bit 3				
	StallError02	Bit 4				
	OvertemperatureError02	Bit 5				
	OpenLoadError02	Bit 6				
	OvercurrentError02	Bit 7				
	InputPowerSupplyError01	Bit 8				
	DrvOk01	Bit 9				
	InputPowerSupplyError02	Bit 12				
	DrvOk02	Bit 13				
54	Error acknowledgment	USINT			•	
	ClearError01	Bit 0				
	ClearError02	Bit 1				
Positioning						
0	Position1Sync	UINT		•		
2	Position2Sync	UINT		•		
6	Position1async	INT		•		
8	Position2async	INT		•		
60	Position1LatchedSync	SINT		•		
62	Position2LatchedSync	USINT				•
64	Position1LatchedAsync	UINT		•		
66	Position2LatchedAsync	UINT		•		
Latch and trigger						
76	Latch configuration	USINT			•	
	StartLatch01	Bit 0				
	TriggerEdgePos01	Bit 1				
	TriggerEdgeNeg01	Bit 2				
	StartLatch02	Bit 4				
	TriggerEdgePos02	Bit 5				
	TriggerEdgeNeg02	Bit 6				
78	Trigger configuration	USINT			•	
	StartTrigger	Bit 1				
	TriggerEdge	Bit 0				
72	Latch trigger status	USINT	•			
	LatchInput01	Bit 0				
	LatchDone01	Bit 1				
	LatchInput02	Bit 2				
	LatchDone02	Bit 3				
	TriggerInput	Bit 4				
68	usSinceTrigger	UINT		•		
Module information						
80	Temperature	SINT		•		

## 5.5 Function model 1 - ARNC0 with SDC

Register	Name	Data type	Read		Write	
			Cyclic	Acyclic	Cyclic	Acyclic
Configuration						
Module / Motor configuration						
102	SDCConfig01	USINT				•
103	MotorSettlingTime01	USINT				•
104	MotorSettlingTime02	USINT				•
107	DelayedCurrentSwitchOff01	USINT				•
108	DelayedCurrentSwitchOff02	USINT				•
Configuring currents						
33	ConfigOutput03 (holding current 1)	USINT				•
34	ConfigOutput04 (nominal current 1)	USINT				•
35	ConfigOutput05 (maximum current 1)	USINT				•
36	ConfigOutput06 (holding current 2)	USINT				•
37	ConfigOutput07 (nominal current 2)	USINT				•
38	ConfigOutput08 (maximum current 2)	USINT				•

Register	Name	Data type	Read		Write	
			Cyclic	Acyclic	Cyclic	Acyclic
Counter configuration						
32	ConfigOutput09 (counter configuration)	USINT				•
Stall detection						
44	ConfigOutput01 (stall threshold)	UINT				•
52	ConfigOutput16 (mixed decay threshold)	UINT				•
84	FullStepThreshold01	UINT				•
86	FullStepThreshold02	UINT				•
92	StallDetectMinSpeed01	UINT				•
94	StallDetectMinSpeed02	UINT				•
Reading back the configuration						
33	ConfigOutput03Read (holding current 1)	USINT		•		
34	ConfigOutput04Read (nominal current 1)	USINT		•		
35	ConfigOutput05Read (maximum current 1)	USINT		•		
36	ConfigOutput06Read (holding current 2)	USINT		•		
37	ConfigOutput07Read (nominal current 2)	USINT		•		
38	ConfigOutput08Read (maximum current 2)	USINT		•		
Communication						
Motor detection						
81	MotorIdentTrigger	USINT				•
12	Motoridentification01	UINT		•		
14	Motoridentification02	UINT		•		
74	MotorLoad	USINT	•			
Motor control						
100	Motor current	USINT			•	
	DriveEnable01	Bit 0				
	BoostCurrent01	Bit 1				
	StandstillCurrent01	Bit 2				
	DriveEnable02	Bit 4				
	BoostCurrent02	Bit 5				
	StandstillCurrent02	Bit 6				
16	Motor1Step0	INT			•	
24	Motor2Step0	INT			•	
SDC life sign monitoring						
112	SetTime01	INT			•	
114	SetTime02	INT			•	
73	LifeCnt	SINT	•			
Input state						
4	Input counter value	USINT	•			
	StatusInput01	Bit 2				
	...	...				
	StatusInput06	Bit 7				
Error handling						
4	Module power supply error	USINT	•			
	ModulePowerSupplyError	Bit 0				
10	Error state	UINT	•			
	StallError01	Bit 0				
	OvertemperatureError01	Bit 1				
	OpenLoadError01	Bit 2				
	OvercurrentError01	Bit 3				
	StallError02	Bit 4				
	OvertemperatureError02	Bit 5				
	OpenLoadError02	Bit 6				
	OvercurrentError02	Bit 7				
	InputPowerSupplyError01	Bit 8				
	DrvOk01	Bit 9				
	InputPowerSupplyError02	Bit 12				
DrvOk02	Bit 13					
54	Error acknowledgment	USINT			•	
	ClearError01	Bit 0				
	ClearError02	Bit 1				
Homing						
200	RefPulsePos01 (internal)	INT	•			
204	RefPulsePos01 (ABR)					
202	RefPulsePos02 (internal)	INT	•			
206	RefPulsePos02 (ABR)					
212	RefPulseCnt01 (internal)	SINT	•			
214	RefPulseCnt01 (ABR)					
213	RefPulseCnt02 (internal)	SINT	•			
215	RefPulseCnt02 (ABR)					
Positioning						
0	Position1Sync	UINT		•		
2	Position2Sync	UINT		•		
6	Position1async	INT		•		
8	Position2async	INT		•		

## Register description

Register	Name	Data type	Read		Write	
			Cyclic	Acyclic	Cyclic	Acyclic
220	ActTime01	INT	•			
220	ActTime02	INT	•			
<b>Trigger</b>						
208	TriggerTime01	INT	•			
216	TriggerCnt01	SINT	•			
<b>Module information</b>						
80	Temperature	SINT		•		

## 5.6 Function model 254 - "Bus controller" and function model 3 - "Ramp"

Register	Offset <sup>1)</sup>	Name	Data type	Read		Write	
				Cyclic	Acyclic	Cyclic	Acyclic
Configuration							
Configuring currents							
48	-	ConfigOutput03a (holding current 1)	USINT				•
49	-	ConfigOutput04a (nominal current 1)	USINT				•
50	-	ConfigOutput05a (maximum current 1)	USINT				•
112	-	ConfigOutput06a (holding current 2)	USINT				•
113	-	ConfigOutput07a (nominal current 2)	USINT				•
114	-	ConfigOutput08a (maximum current 2)	USINT				•
Motion generator							
304	-	GeneralConfig01	USINT				•
52	-	MaxSpeed01pos	UINT				•
116	-	MaxSpeed02pos	UINT				•
54	-	MaxAcc01	UINT				•
118	-	MaxAcc02	UINT				•
56	-	MaxDec01	UINT				•
120	-	MaxDec02	UINT				•
58	-	RevLoop01	INT				•
122	-	RevLoop02	INT				•
75	-	JoltTime01	USINT				•
139	-	JoltTime02	USINT				•
60	-	FixedPos01a	DINT				•
64	-	FixedPos01b	DINT				•
124	-	FixedPos02a	DINT				•
128	-	FixedPos02b	DINT				•
Stall detection							
51	-	StallDetectConfig01	USINT				•
115	-	StallDetectConfig02	USINT				•
72	-	FullStepThreshold01	UINT				•
136	-	FullStepThreshold02	UINT				•
74	-	StallRecognitionDelay01	USINT				•
138	-	StallRecognitionDelay02	USINT				•
78	-	StallDetectMinSpeed01	UINT				•
142	-	StallDetectMinSpeed02	UINT				•
Homing							
68	-	RefSpeed01	UINT				•
132	-	RefSpeed02	UINT				•
70	-	RefConfig01	SINT				•
134	-	RefConfig02	SINT				•
Limitations							
306	-	LimitSwitchConfig01	USINT				•
308	-	LimitSwitchConfig02	USINT				•
380	-	PositionLimitMin01	DINT				•
388	-	PositionLimitMin02	DINT				•
384	-	PositionLimitMax01	DINT				•
392	-	PositionLimitMax02	DINT				•
Reading back the configuration							
48	-	ConfigOutput03aRead (holding current 1)	USINT		•		
49	-	ConfigOutput04aRead (nominal current 1)	USINT		•		
50	-	ConfigOutput05aRead (maximum current 1)	USINT		•		
112	-	ConfigOutput06aRead (holding current 2)	USINT		•		
113	-	ConfigOutput07aRead (nominal current 2)	USINT		•		
114	-	ConfigOutput08aRead (maximum current 2)	USINT		•		
Communication							
Motor detection							
148	-	Motoridentification02	UINT		•		
84	-	Motoridentification01	UINT		•		
Motor control							
6	6	MpGenMode01	SINT			•	
14	14	MpGenMode02	SINT			•	

Register	Offset <sup>1)</sup>	Name	Data type	Read		Write	
				Cyclic	Acyclic	Cyclic	Acyclic
82	-	ModeReadback01	SINT		•		
146	-	ModeReadback02	SINT		•		
4	4	MpGenControl01	UINT			•	
12	12	MpGenControl02	UINT			•	
80	-	ControlReadback01	UINT		•		
144	-	ControlReadback02	UINT		•		
4	4	MpGenStatus01	UINT	•			
12	12	MpGenStatus02	UINT	•			
<b>Input state</b>							
6	6	InputStatus	USINT	•			
<b>Error handling</b>							
98	-	ErrorCode01	UINT		•		
162	-	ErrorCode02	UINT		•		
<b>Homing</b>							
86	-	RefPos01CyclicCounter	DINT		•		
150	-	RefPos02CyclicCounter	DINT		•		
94	-	RefPos01AcyclicCounter	DINT		•		
158	-	RefPos02AcyclicCounter	DINT		•		
<b>Positioning and speed</b>							
0	0	AbsPos01	DINT			•	
8	8	AbsPos02	DINT			•	
0	0	AbsPos01ActVal	DINT	•			
8	8	AbsPos02ActVal	DINT	•			
90	-	AbsPos01ActValAcyclic	DINT		•		
154	-	AbsPos02ActValAcyclic	DINT		•		
<b>Module information</b>							
46	-	Temperature	SINT		•		

1) The offset specifies the position of the register within the CAN object.

## 5.7 Configuration registers - Function model 0 and function model 1 - ARNC0

### 5.7.1 Module configuration

#### 5.7.1.1 Motor configuration

Name:

ConfigOutput02

The number of transfer values and the resolution of microsteps for the drive can be configured in this register.

Data type	Values
UINT	See the bit structure.

Bit structure:

Bit	Description	Value	Information
0 - 1	The setting for these two bits determines the meaning of bits 2 and 3 in register "Input counter value" on page 51.	x	
2	Reserved	0	
3 - 4	Number of transfer values per X2X Link cycle (see "Motor setting" on page 49)	00	1 x $\Delta s / \Delta t$ (transfer values: MotorXStep0)
		01	2 x $\Delta s / \Delta t$ (transfer values: MotorXStep0 - MotorXStep1)
		10	4 x $\Delta s / \Delta t$ (transfer values: MotorXStep0 - MotorXStep3)
		11	Reserved
5 - 6	Resolution of microsteps for the following registers: <ul style="list-style-type: none"> <li>"Motor setting" on page 49</li> <li>"Position sync and async" on page 54</li> </ul>	00	Resolution: 5 bits (bits 0 to 4) microsteps, 8 bits (bits 5 to 12) full steps
		01	Resolution: 6 bits (bits 0 to 5) microsteps, 7 bits (bits 6 to 12) full steps
		10	Resolution: 7 bits (bits 0 to 6) microsteps, 6 bits (bits 7 to 12) full steps
		11	Resolution: 8 bits (bits 0 to 7) microsteps, 5 bits (bits 8 to 12) full steps
7 - 10	Reserved	0	
11	Operating mode	0	Normal mode (standard setting)
		1	Enhanced mode
12 - 15	Reserved	0	

## Register description

### 5.7.1.2 Motor settling time

Name:

MotorSettlingTime01 to MotorSettlingTime02

This register determines the motor setting time. This is the minimum time from the time the motor is energized until the drive bit (DrvOk) is set (see ["Error state" on page 52](#)). The setting is made in steps of 10 ms.

Data type	Values	Information
USINT	1 to 255	10 ms to 2.55 s, default: 10 ms

### 5.7.1.3 SDC configuration

Name:

SDCConfig01

This register can be used to enable or disable additional SDC information.

Enabling/Disabling the SDC information causes the additional cyclic registers to be shown or hidden. Compare the two variants of function model ARNC0 [with](#) and [without enabled SDC information](#).

Data type	Values
USINT	See the bit structure.

Bit structure:

Bit	Description	Value	Information
0	Trigger edge	0	Rising trigger edge
		1	Falling trigger edge
1 - 5	Reserved	0	
6	<a href="#">SDC life sign monitoring</a>	0	Disabled
		1	Enabled
7	SDC information <sup>1)</sup>	0	Disabled
		1	Enabled

- 1) If bit "SDC information" is enabled, bit "EncOK01" is displayed in the Automation Studio I/O mapping. This bit is permanently linked to bit ModulOK and always indicates its value.



#### Information:

**Neither SDC information nor SDC life sign monitoring is permitted to be changed at run-time.**

### 5.7.1.4 Switch-off delay

Name:

DelayedCurrentSwitchOff01 to DelayedCurrentSwitchOff02

If the ["SDC life sign monitoring" on page 50](#) is triggered (i.e. the [NetTime timestamp](#) is in the past), the motor is decelerated at nominal current with speed setpoint = 0.

Then the motor is switched off after the delay configured with this register.

Data type	Values	Information
USINT	0 to 255	0 to 25.5 s in steps of 100 ms (default: 100 ms)



## 5.7.2 Configuring currents

### 5.7.2.1 Holding current, nominal current and maximum current

Name:

ConfigOutput03 (holding current 1)  
 ConfigOutput04 (nominal current 1)  
 ConfigOutput05 (maximum current 1)  
 ConfigOutput06 (holding current 2)  
 ConfigOutput07 (nominal current 2)  
 ConfigOutput08 (maximum current 2)

The holding current, nominal current and maximum current registers are used to configure the desired motor current.

Register	Description
Nominal current	Current during operation at constant speed
Maximum current	Current during acceleration phases
Holding current	Current when motor at standstill

Switching between preset current values (holding current, nominal current, maximum current):

Function model	Switching between preset current values at runtime
Standard and ARNC0	Using bits 14 and 15 in registers "Motor setting" on page 49
ARNC0 with enabled SDC information	Using register "Motor current" on page 49

Data type	Values	Unit
USINT	0 to 167	Percentage of the nominal motor current <ul style="list-style-type: none"> <li>100% corresponds to the nominal current of the motor bridge power unit listed in the technical data.</li> <li>167% corresponds to the maximum current of the motor bridge power unit listed in the technical data.</li> </ul>

### 5.7.2.2 Reading back the holding current, nominal current and maximum current

Name:

ConfigOutput03Read (holding current 1)  
 ConfigOutput04Read (nominal current 1)  
 ConfigOutput05Read (maximum current 1)  
 ConfigOutput06Read (holding current 2)  
 ConfigOutput07Read (nominal current 2)  
 ConfigOutput08Read (maximum current 2)

These registers are used to read the respective current values in percent.

Data type	Values	Unit
USINT	0 to 255	Percentage of the nominal motor current 100% corresponds to the nominal current of the motor bridge power unit listed in the technical data.

## 5.7.3 Stall detection

### 5.7.3.1 Minimum speed for stall detection

Name:

StallDetectMinSpeed01 to StallDetectMinSpeed02

If the motor speed exceeds the value set in this register, then stall detection is enabled and the configured "mixed decay threshold" on page 42 is used. Value 15 is always used for the mixed decay threshold below this threshold value, and no stall error is reported. This means that mixed decay mode is always enabled at low speeds where stall detection principally does not work.

Data type	Values	Information
UINT	0 to 65535	Minimum speed in steps/second.

## Register description

### 5.7.3.2 Stall threshold

Name:  
ConfigOutput01

This register can be used to define a threshold for the motor load above which the module detects a stall condition (see "[Error state](#)" on page 52).

Data type	Values
UINT	See the bit structure.

Bit structure:

Bit	Description	Value	Information
0 - 2	Stall detection trigger threshold for motor 1	0	Stall detection is disabled.
		1	Minimum sensitivity for stall detection
		2 to 6	Sets the sensitivity for stall detection
		7	Maximum sensitivity for stall detection
3	Reserved	0	
4 - 6	Stall detection trigger threshold for motor 2	0	Stall detection is disabled.
		1	Minimum sensitivity for stall detection
		2 to 6	Sets the sensitivity for stall detection
		7	Maximum sensitivity for stall detection
7 - 15	Reserved	0	

### 5.7.3.3 Mixed decay threshold

Name:  
ConfigOutput16

The mixed decay threshold can be configured in this register. This value must be adjusted according to the motor being used, current and voltage when using "[stall detection](#)" on page 42. Otherwise, the default value 15 will be used.

Data type	Values
UINT	See the bit structure.

Bit structure:

Bit	Description	Value	Information
0 - 3	Mixed decay threshold of motor 1	0	Mixed decay disabled
		1 to 14	Setting for mixed decay threshold
		15	Mixed decay always enabled
4 - 7	Mixed decay threshold of motor 2	0 to 15	See motor 1.
8 - 15	Reserved	-	

### 5.7.3.4 Full step limit value

Name:  
FullStepThreshold01 to FullStepThreshold02

Starting with the speed specified in this register, the motor is operated in full step mode; below it, it is operated in steps per second.

Data type	Values	Information
UINT	0	Full step mode disabled
	1 to 65535	Steps/second

## 5.7.4 Counter configuration

### 5.7.4.1 Counter configuration

Name:  
ConfigOutput09

Data type	Values
USINT	See the bit structure.

Bit structure:

Bit		Value	Description	
Motor 1	Motor 2		Function model "Standard"	Function model "ARNCO/ARNCO with SDC"
0	4	0	Counter value ABRx unaffected	Negative edge: Disables latch function ABRx
		1	Positive edge: Enables homing counter value ABRx with default value (register Set counter)	Positive edge: Enables latch function ABRx
1 - 2	5 - 6	00	Homing counter value ABRx unconditionally	Latch counter value: ABRx unconditional
		01	Homing counter value ABRx on positive edge of the R input of ABRx	Latch counter value: ABRx on positive edge of input R of ABRx
		10	Homing counter value ABRx on negative edge of the R input of ABRx	Latch counter value: ABRx on negative edge of input R of ABRx
		11	Reserved	Reserved
3	7	0	<ul style="list-style-type: none"> <li>Position sync: Internal position counter</li> <li>Position async: ABRx counter value</li> </ul>	<ul style="list-style-type: none"> <li>Position sync: Internal position counter</li> <li>Position async: ABRx counter value</li> <li>Position latched sync: Internal position counter</li> <li>Position latched async: ABRx counter value</li> </ul>
		1	<ul style="list-style-type: none"> <li>Position sync: ABRx counter value</li> <li>Position async: Internal position counter</li> </ul>	<ul style="list-style-type: none"> <li>Position sync: ABRx counter value</li> <li>Position async: Internal position counter</li> <li>Position latched sync: ABRx counter value</li> <li>Position latched async: Internal position counter</li> </ul>

### 5.7.4.2 Set counter

Name:  
SetCounter01 to SetCounter02

This register can be used to define the value to which the position counter is set during homing.

Data type	Values
UINT	0 to 65535

## 5.8 Function models 3 and 254 - Configuration registers

### 5.8.1 Configuring currents

#### 5.8.1.1 Holding current, nominal current and maximum current

Name:  
ConfigOutput03a (holding current 1)  
ConfigOutput04a (nominal current 1)  
ConfigOutput05a (maximum current 1)  
ConfigOutput06a (holding current 2)  
ConfigOutput07a (nominal current 2)  
ConfigOutput08a (maximum current 2)

The holding current, nominal current and maximum current registers are used to configure the desired motor current.

Register	Description
Nominal current	Current during operation at constant speed
Maximum current	Current during acceleration phases
Holding current	Current when motor at standstill

Data type	Values	Unit
USINT	0 to 167	Percentage of the nominal motor current <ul style="list-style-type: none"> <li>100% corresponds to the nominal current of the motor bridge power unit listed in the technical data.</li> <li>167% corresponds to the maximum current of the motor bridge power unit listed in the technical data.</li> </ul> Bus controller default setting: 0

## Register description

### 5.8.1.2 Reading back the holding current, nominal current and maximum current

Name:

ConfigOutput03aRead (holding current 1)  
ConfigOutput04aRead (nominal current 1)  
ConfigOutput05aRead (maximum current 1)  
ConfigOutput06aRead (holding current 2)  
ConfigOutput07aRead (nominal current 2)  
ConfigOutput08aRead (maximum current 2)

These registers are used to read the respective current values in percent.

Data type	Values	Unit
USINT	0 to 255	Percentage of the nominal motor current 100% corresponds to the nominal current of the motor bridge power unit listed in the technical data.

## 5.8.2 Motion generator

### 5.8.2.1 General configuration

Name:

GeneralConfig01

This register is used to switch the positioning mode and to configure the cycle time of the movement profile generator.

Data type	Values	Bus controller default setting
USINT	See the bit structure.	0

Bit structure:

Bit	Description	Value	Information
0	Position mode	0	"Mode 1: Position mode without extended control word" on page 58 (bus controller default setting)
		1	"Mode 1: Position mode with extended control word" on page 58
1 - 2	Cycle time of the movement profile generator: <sup>1)</sup>	00	25 ms (bus controller default setting)
		01	10 ms
		10	5 ms
		11	Reserved
3 - 7	Reserved	0	

1) This parameter is supported starting with upgrade 1.3.1.1 (firmware version 100).

The cycle time for the motion profile generator is configured with this cycle. This cycle time affects the unit for specifying the speed and acceleration:

- Unit for speed: Microsteps/Cycle
- Unit for acceleration: Microsteps/Cycle<sup>2</sup>

### 5.8.2.2 Maximum speed

Name:

MaxSpeed01pos to MaxSpeed02pos

This register defines the maximum speed for the absolute positioning modes (1, -123, -124, -125, -126).



#### Information:

The setting does not apply to the speed and homing modes (2, -127, -128).

Data type	Values	Information
UNIT	0 to 65535	Speed in microsteps/cycle. Bus controller default setting: 0

### 5.8.2.3 Maximum acceleration

Name:

MaxAcc01 to MaxAcc02

This register defines the maximum acceleration (also applies to homing modes).

Data type	Values	Information
UINT	0 to 65535	Acceleration in microsteps/ <i>cycle</i> <sup>2</sup> . Bus controller default setting: 0

### 5.8.2.4 Maximum deceleration

Name:

MaxDec01 to MaxDec02

This register defines the maximum deceleration (also applies to homing modes).

Data type	Values	Information
UINT	0 to 65535	Brake deceleration in microsteps/ <i>cycle</i> <sup>2</sup> . Bus controller default setting: 0

### 5.8.2.5 Reversing loop

Name:

RevLoop01 to RevLoop02

This register defines the steps for the reverse loop.

This parameter is only used in modes [1](#), [-123](#), [-124](#), [-125](#), [-126](#) (absolute positioning modes).

Data type	Values	Information
INT	-32768 to 32767	Bus controller default setting: 0

### 5.8.2.6 Jerk time

Name:

JoltTime01 to JoltTime02

This register is used to specify the number of cycles for the jerk limitation time. If more than 80 cycles are entered, they are limited to 80.

Data type	Values	Information
USINT	0	No jerk limitation time. Bus controller default setting
	1 to 80 <sup>1)</sup>	Number of cycles

1) Starting with upgrade 1.3.1.1 (firmware version 100), for older versions: 16

### 5.8.2.7 Fixed position A

Name:

FixedPos01a to FixedPos02a

Depending on the mode, this register can be used to define a number of steps or a target position:

- [-121](#): Number of steps to be moved
- [-124](#) (with 1 on the digital input) and [-125](#): Value of the target position to be approached

Data type	Values	Information
DINT	-2,147,483,648 to 2,147,483,647	Bus controller default setting: 0

### 5.8.2.8 Fixed position B

Name:

FixedPos01b to FixedPos02b

This register can be used to define the position that should be moved to in modes [-124](#) (if 0 on the digital input) and [-126](#).

Data type	Values	Information
DINT	-2,147,483,648 to 2,147,483,647	Bus controller default setting: 0

## Register description

### 5.8.3 Stall detection

#### 5.8.3.1 Full step limit value

Name:

FullStepThreshold01 to FullStepThreshold02

Starting with the speed specified in this register, the motor is operated in full step mode; it is operated in microstep mode below it.

Data type	Values	Information
UINT	1 to 65534	Speed in microsteps/ <i>cycle</i> . Bus controller default setting: 0
	65535	The motor is always operated in microstep mode.

#### 5.8.3.2 Stall detection configuration / Mixed decay

Name:

StallDetectConfig01 to StallDetectConfig02

The mixed decay threshold and stall detection sensitivity can be configured in this register.

Data type	Values	Bus controller default setting
USINT	See the bit structure.	0

Bit structure:

Bit	Description	Value	Information
0 - 3	Mixed decay threshold	0	Mixed decay disabled (bus controller default setting)
		1 to 14	Setting for mixed decay threshold
		15	Mixed decay always enabled
4 - 6	Stall threshold	0	Stall detection is disabled (bus controller default setting).
		1 to 6	Steps involved in setting stall detection sensitivity
		7	Maximum sensitivity for stall detection
7	Motor load	0	The motor load value is not displayed (bus controller default setting).
		1	Show value in register "Status word" on page 62 <sup>1)</sup>

1) If this bit is 1, then the motor load value is indicated in bits 13 to 15 of the status word register (otherwise, these bits are 0). This value can help when testing stall detection and "Homing during stall" on page 60 mode.

#### 5.8.3.3 Stall recognition delay

Name:

StallRecognitionDelay01 to StallRecognitionDelay02

The value in this register is only relevant for mode [Homing during stall](#).

A stall is only detected after the time specified here has expired and after the homing procedure has started.

The delay time must be set in cycles.

Delay time = Value \* [Cycle time of the movement profile generator](#)

For example, a setting of 4 (and a cycle time of 25 ms) means that a stall will not be detected until 100 ms after the motor starts moving (start of the homing procedure).

Data type	Values	Information
USINT	0	No delay (bus controller default setting)
	1 to 255	Delay time in cycles, see " <a href="#">General configuration</a> " on page 44.

#### 5.8.3.4 Minimum speed for stall detection

Name:

StallDetectMinSpeed01 to StallDetectMinSpeed02

If the motor speed exceeds the value set in this register, then stall detection is enabled and the configured "[mixed decay threshold](#)" on page 46 is used. Value 15 is always used for the mixed decay threshold below this threshold value, and no stall error is reported. This means that mixed decay mode is always enabled at low speeds where stall detection principally does not work.

Data type	Values	Information
UINT	0 to 65535	Minimum speed in microsteps/ <i>cycle</i> . Bus controller default setting: 0

## 5.8.4 Homing

### 5.8.4.1 Homing speed

Name:

RefSpeed01 to RefSpeed02

This register sets the speed for homing modes -127 and -128.

Data type	Values	Information
UINT	0 to 65535	Speed in microsteps/cycle. Bus controller default setting: 0

### 5.8.4.2 Homing configuration

Name:

RefConfig01 to RefConfig02

The homing mode can be set with this register.

Data type	Values	Information
SINT	-120	Set home position
	-121	Homing on positive edge of input DI 4
	-122	Homing on negative edge of input DI 4
	-125	Homing on positive edge of input DI 3/6 (R pulse). (Bus controller default setting)
	-126	Homing on negative edge of input DI 3/6 (R pulse)
	-127	Homing during stall detection
	-128	Immediate homing
	All others	No effect

## 5.8.5 Limitations

### 5.8.5.1 Limit switch configuration

Name:

LimitSwitchConfig01 to LimitSwitchConfig02

The behavior of limit switches can be configured with this register.

Data type	Values	Bus controller default setting
USINT	See the bit structure.	0

Bit structure:

Bit	Description	Value	Information
0 - 1	Negative limit switch	00	Switched off (bus controller default setting)
		01	Active if low
		10	Reserved
		11	Active if high
2 - 3	Positive limit switch	00	Switched off (bus controller default setting)
		01	Active if low
		10	Reserved
		11	Active if high
4 - 6	Reserved	0	
7	Direction monitoring	0	Off (bus controller default setting)
		1	On

### 5.8.5.2 Software limit

Name:

PositionLimitMin01 to PositionLimitMin02

PositionLimitMax01 to PositionLimitMax02

This register configures software limits. The function is enabled if at least one of the two registers is not equal to zero.

Data type	Values	Information
DINT	-2,147,483,648 to 2,147,483,647	Bus controller default setting: 0

## 5.9 Communication registers - Function model 0 and function model Motion-Configuration

### 5.9.1 Motor detection

#### 5.9.1.1 Motor ID trigger

Name:

MotorIdentTrigger

With this register, a measurement of the motor ID can be initiated acyclically (see ["Motor configuration" on page 39](#)). The application must ensure that the conditions for measurement are met.

Data type	Values
USINT	See the bit structure.

Bit structure:

Bit	Description	Value	Information
0		0	No effect
		1	Positive edge triggers motor ID measurements for motor 1
1		0	No effect
		1	Positive edge triggers motor ID measurements for motor 2
2 - 7	Reserved	0	

#### 5.9.1.2 Motor identification

Name:

Motoridentification01 to Motoridentification02

This register is used for differentiation in the application and to identify the connected motor type (for service purposes). The function of this register depends on the set operating mode (see bit 11 in register ["Motor configuration" on page 39](#)):

- **Bit 11 = 0: Normal operating mode**  
The value of this register is an indicator of how long the current has been applied in the motor windings.
- **Bit 11 = 1: Extended operating mode**  
After successful measurement, this register contains the time [ $\mu$ s] required to apply a current increase of  $\Delta I = 1$  A to a motor winding.

Data type	Motor ID values	Explanation
UINT	0	No motor identifier available (after switching on for as long as the measurement conditions are not met)
	1 to 32767	Valid range of values for the motor ID register (unit: $\mu$ s)
	65534	Invalid value: Overflow

#### 5.9.1.3 Measuring the motor load

Name:

MotorLoad

This register contains the current measured load value for stall detection. This can be used to tune stall detection.

Data type	Values
USINT	See the bit structure.

Bit structure:

Bit	Description	Value	Information
0 - 2	Motor 1	0 to 7	Motor load value
3	Reserved	-	
4 - 6	Motor 2	0 to 7	Motor load value
7	Reserved	-	



## 5.9.2 Motor control

### 5.9.2.1 Motor current

Name: The bits in this register are distributed between motor 1 and motor 2 as follows.

Motor 1	Motor 2
DriveEnable01	DriveEnable02
BoostCurrent01	BoostCurrent02
StandstillCurrent01	StandstillCurrent02

Bits 0 to 6 of this register control the current feed of the motors.

Data type	Values
USINT	See the bit structure.

Bit structure:

Bit		Description		Value	Information
Motor 1	Motor 2	Motor 1	Motor 2		
0	4	DriveEnable01	DriveEnable02	x	Motor powered
1	5	BoostCurrent01	BoostCurrent02	x	Maximum current
2	6	StandstillCurrent01	StandstillCurrent02	x	Holding current
3	7	Reserved		0	

### Possible status of bits 0 to 6

StandstillCurrent0x	BoostCurrent0x	DriveEnable0x	Description
x	x	0	Motor not supplied with current
0	0	1	Nominal current supplied to motor
0	1	1	Maximum current supplied to motor
1	0	1	Holding current supplied to motor
1	1	1	Holding current supplied to motor

### 5.9.2.2 Motor setting

Name:

Motor1Step0 to Motor1Step3

Motor2Step0 to Motor2Step3

These registers are used to specify the number and direction of steps that must be carried out by the module during the next X2X Link cycle, and to select the motor current (see also "[Holding current, nominal current and maximum current](#)" on page 41).

Data type	Values
UINT	See the bit structure.

Bit structure:

Bit	Description	Value	Information
0 - 12	Number of steps for the module to move during the next X2X cycle.	x	
13	Direction of movement	0	Positive
		1	Negative
14 - 15	Selection of motor current	00	Motor not powered
		01	Holding current
		10	Nominal current
		11	Maximum current

The number of transfer values per X2X Link cycle is specified by bits 3 and 4 in the "[motor configuration](#)" on page 39. If only one transfer value (bits 3 and 4 = 00) is specified, then the motor is advanced by MotorXStep0 until the next X2X Link cycle. If 2 or 4 transfer values are specified, then the X2X Link cycle is divided accordingly.

Example: X2X Link cycle = 1 ms (1000 µs)

Time	Number of transfer values (see " <a href="#">Motor configuration</a> " on page 39)		
	1 (bits 3 - 4 = 00)	2 (bits 3 - 4 = 01)	4 (bits 3 - 4 = 10)
0 - 250 µs	MotorXStep0	MotorXStep0	MotorXStep0
250 - 500 µs			MotorXStep1
500 - 750 µs		MotorXStep1	MotorXStep2
750 - 1000 µs			MotorXStep3

## Register description

### 5.9.2.3 Step specification

Name:

Motor1Step0 to Motor2Step0

This registers is used to specify the number and direction of steps that should be carried out by the module during the next X2X cycle.

The value is specified with a resolution of 1/256 of a full step (corresponds to 8-bit microsteps).

The direction of movement is derived from the value's sign:

Data type	Values	Information
INT	>0	Movement in the positive direction in 1/256 full steps
	<0	Movement in the negative direction in 1/256 full steps

### 5.9.3 Life sign monitoring

#### 5.9.3.1 SDC life sign monitoring

Name:

SetTime01 to SetTime02

The module uses SDC life sign monitoring to check whether valid values have been received for the speed setpoint. SDC life sign monitoring is enabled in register "[SDC configuration](#)" on [page 40](#) by setting bit 6 (SDCSetTime = On).

Data type	Values
INT	-32768 to 32767

#### 5.9.3.2 Lifecycle counter

Name:

LifeCnt

This register is incremented by one with each X2X Link cycle.

Data type	Values
SINT	-128 to 127

## 5.9.4 Input state

### 5.9.4.1 Input counter value

Name:

StatusInput

ModulePowerSupplyError

StatusInput01 to StatusInput06

This register contains the state of the digital inputs and counters depending on the module configuration:

- **Bit 0 in module configuration = 0:** State of the digital inputs
- **Bit 0 in module configuration = 1:** State of the counter inputs

In function model 1 - "Standard with SDC", only the state of the digital inputs is available.

Data type	Values
USINT	See the bit structure.

Bit structure:

#### Status of the digital inputs

The meaning of bits 0 and 1 depends on the function model used.

Bit	Description	Value	Information
Function model 0 - Standard			
0	Motor 1 and power supply of inputs 1 to 3	0	OK
		1	Error occurred
1	Motor 2 and power supply of inputs 4 to 6	0	OK
		1	Error occurred
All other functional models			
0	ModulePowerSupplyError	0	OK
		1	Module power supply error
1	Reserved	0	
2	StatusInput01	0 or 1	Input state - Digital input 1
...		...	
7	StatusInput06	0 or 1	Input state - Digital input 6

#### Status of the counter inputs

Bit	Description	Value	Information
0 - 1	See "Status of the digital inputs"	x	
2	StatusInput01	x	Homing toggle bit for ABR counter 1: After homing is completed, the state of this bit is changed.
3	StatusInput02	0	The homing procedure for the ABR counter 1 is active.
		1	The homing procedure of the ABR counter 1 is completed.
4	StatusInput03	0 or 1	Input state - Digital input 3
5	StatusInput04	0 or 1	Homing toggle bit for ABR counter 2: After homing is completed, the state of this bit is changed.
6	StatusInput05	0	The homing procedure for the ABR counter 2 is active.
		1	The homing procedure of the ABR counter 2 is completed.
7	StatusInput06	0 or 1	Input state - Digital input 6

## 5.9.5 Error handling

### 5.9.5.1 Error state

Name:

The bits in this register are distributed between motor 1 and motor 2 as follows.

#### Motor 1

StallError01

OvertemperatureError01

OpenLoadError01

OvercurrentError01

InputPowerSupplyError01

DrvOk01

#### Motor 2

StallError02

OvertemperatureError02

OpenLoadError02

OvercurrentError02

InputPowerSupplyError02

DrvOk02

This register contains the error state of the drive. Each bit indicates a certain error or status. If an error is registered in bits 0 to 7, then the corresponding bit remains set until the error has been acknowledged (see ["Error acknowledgment" on page 53](#)).

Data type	Values
UINT	See the bit structure.

Bit structure:

Bit		Description		Value	Information
Motor 1	Motor 2	Motor 1	Motor 2		
0	4	StallError01	StallError02	0	No stall
				1	Stall
1	5	Overtemperature error for motor 1 OvertemperatureError01	Overtemperature error for motor 2 OvertemperatureError02	0	No overtemperature
				1	Overtemperature
2	6	Current error for motor 1 OpenLoadError01	Current error for motor 2 OpenLoadError02	0	No current error
				1	Current error
3	7	Overcurrent error for motor 1 OvercurrentError01	Overcurrent error for motor 2 OvercurrentError02	0	No overcurrent
				1	Overcurrent
8	12	Power supply error digital inputs 1 to 3 (female connector 3) InputPowerSupplyError01 <sup>1)</sup>	Power supply error digital inputs 4 to 6 (female connector 4) InputPowerSupplyError02 <sup>1)</sup>	0	Power supply of the digital inputs OK
				1	Error in the power supply of digital inputs
9	13	Status of the drive motor 1 DrvOk01 <sup>2)</sup>	Status of the drive motor 2 DrvOk02 <sup>2)</sup>	0	An error was triggered for the motor axis
				1	The drive is running error-free.
10 - 11	14 - 15	Reserved		0	

1) Only with function model ARNC0 and ARNC0 with SDC

2) Only with function model "ARNC0 with SDC"

#### Overtemperature error

Error bit "Overtemperature" is set for one of the following reasons:

- The temperature of the output stage of a motor output exceeds the maximum permissible temperature.
- The module temperature exceeds 85°C.

#### Current error

This error bit occurs whenever the required current cannot be supplied to the motor windings. This can be triggered by an open circuit, for example. At higher speeds, this error can also occur without an open circuit depending on the motor. Due to the back EMF of the motor, this error already occurs at somewhat lower speeds if the engine is idling.

#### Overcurrent error

An overcurrent occurs if 2 times the motor current is measured in the motor windings (e.g. short circuit).

#### Error in the power supply of digital inputs

This error occurs in the event of undervoltage or overvoltage on the module power supply.

In function model "Standard", bits 8 and 12 do not exist in this form. If the module detects undervoltage or overvoltage of the module power supply, all bits of the error state register are set to 1.

## Status of the drive

The status of the drive is only displayed in function model "ARNC0" with enabled SDC information. The drive bit is 1 when the following conditions are met:

- The motor has been switched on (see ["Motor current" on page 49](#)).
- Ground fault detection is completed and OK.
- The MotorID measurement is completed.
- The motor is energized.
- The motor settling time has expired.
- The supply voltage is within the valid range.
- No overtemperature error
- The preset position value is valid (see ["SDC life sign monitoring" on page 50](#)).

### 5.9.5.2 Error acknowledgment

Name:

ClearError01 to ClearError02

This register can be used to acknowledge errors that have occurred on the motor.

For more info, see register ["Error state" on page 52](#).

Data type	Values
USINT	See the bit structure.

Bit structure:

Bit	Description	Value	Information
0	ClearError01	0	No effect
		1	Error acknowledgment for motor 1
1	ClearError02	0	No effect
		1	Error acknowledgment for Motor 2
2 - 7	Reserved	0	

## 5.9.6 Homing

### 5.9.6.1 Home position

Name:

RefPulsePos01 to RefPulsePos02

This register is duplicated and has the following contents:

Register	Description
Home position of the internal position counter	This register contains the home position of the internal position counter.
Home position for the ABR counter	This register contains the home position of the ABR counter.
Data type	Values
INT	-32768 to 32767

Setting "Latch sync" in the Automation Studio I/O configuration can be used to select which of the 4 registers is addressed by the RefPulsePos0x variables.

Variables in Automation Studio	I/O configuration, counter 0x, option "Latch sync"	
	Step counter 0x is indicated on <a href="#">ActPos0x</a> .	ABR counter 0x shown at <a href="#">ActPos0x</a>
RefPulsePos0x	Home position of the internal position counter	Home position of the ABR counter
In addition, option "Latch sync" for counter 1/2 can be used to set in register <a href="#">"Counter configuration" on page 43</a> :		
Bit 3	0	1
Bit 7 (counter 2)	0	1

## Register description

### 5.9.6.2 Reference pulse counter

Name:

RefPulseCnt01 to RefPulseCnt02

These registers are duplicated and have the following contents:

Register	Description
Reference pulse counter for the internal position counter	The reference pulses of the internal position counter are counted in this register.
Reference pulse counter for the ABR counter	The reference pulses of the ABR counter are counted in this register.

Data type	Values
SINT	-128 to 127

Setting "Latch sync" in the Automation Studio I/O configuration can be used to select which of the 4 registers is addressed by variable RefPulsePos01.

Variables in Automation Studio	I/O configuration, counter 0x, option "Latch sync"	
	Step counter 0x is indicated on <a href="#">ActPos0x</a> .	ABR counter 0x shown at <a href="#">ActPos0x</a>
RefPulseCnt0x	Reference pulse counter Internal position counter	Reference pulse counter ABR counter
In addition, option "Latch sync" for counter 1/2 can be used to set in register <a href="#">"Counter configuration" on page 43</a> :		
Bit 3	0	1
Bit 7 (counter 2)	0	1

### 5.9.7 Positioning and speed

#### 5.9.7.1 Position sync and async

Name:

Position1Sync to Position2Sync

Position1async to Position2async

ActPos01 to ActPos02

Depending on the ["Counter configuration" on page 43](#), these registers can be used to read either the internal position counter or the counter value on the ABR input.

Data type	Values
INT	-32768 to 32767

Register	Counter configuration	
	Bit 3 = 0	Bit 3 (channel 1) / Bit 7 (channel 2) = 1
Position sync	Internal position counter	ABR counter
Position async	ABR counter	Internal position counter

#### 5.9.7.2 Position latched sync-async

Name:

Position1LatchedSync to Position2LatchedSync

Position1LatchedAsync to Position2LatchedAsync

The position counter (internal position counter or ABR counter) is applied at the latch event (see ["Latch configuration" on page 55](#)). Bit 3 and 7 of the counter configuration register are used to select which counter value (internal position counter or ABR encoder) is saved in registers "Position latched sync" and "Position latched async".

Data type	Values
INT	-32768 to 32767

Register	Counter configuration	
	Bit 3 (channel 1) / Bit 7 (channel 2) = 0	Bit 3 (channel 1) / Bit 7 (channel 2) = 1
Position latched sync	Internal position counter	ABR counter
Position latched async	ABR counter	Internal position counter

Description of the two counters (internal position counter and ABR counter), see ["Position sync and async" on page 54](#).

### 5.9.7.3 NetTime of the position value

Name:

ActTime01 to ActTime02

This register contains the NetTime of the most recent valid position value.

For additional information about NetTime and timestamps, see "[NetTime Technology](#)" on page 26.

Data type	Values
INT	-32768 to 32767

### 5.9.8 Latch and trigger

#### 5.9.8.1 Latch configuration

Name: The bits of this register are distributed between motor 1 and motor 2 as follows.

##### Motor 1

StartLatch01

TriggerEdgePos01

TriggerEdgeNeg01

##### Motor 2

StartLatch02

TriggerEdgePos02

TriggerEdgeNeg02

This register is used to configure the latch mode and latch function for the position of the stepper motor.

Data type	Values
USINT	See the bit structure.

Bit structure:

Bit		Description		Value	Information
Motor 1	Motor 2	Motor 1	Motor 2		
0	4	Latch function for stepper motor position			
		StartLatch01	StartLatch02	0	The latch function for the current motor position is disabled on the negative edge of this bit.
				1	The latch function for the current motor position is disabled on the positive edge of this bit. After a latch event has occurred, the latch function can be started again on a new rising edge.
1 - 2	5 - 6	Latch mode for stepper motor position			
		Bit 1: TriggerEdgePos01 Bit 2: TriggerEdgeNeg01	Bit 5: TriggerEdgePos02 Bit 6: TriggerEdgeNeg02	00	Latch position of stepper motor unconditional
				01	Latch position of stepper motor on positive edge of associated digital input <sup>1)</sup>
				10	Latch position of stepper motor on negative edge of associated digital input
				11	Reserved
3	7	Reserved		0	

- 1) For motor 1: Digital input DI3 (female connector 3, pin 5)  
For motor 2: Digital input DI6 (female connector 4, pin 5)

#### 5.9.8.2 Trigger configuration

Name:

StartTrigger

TriggerEdge

The trigger functions for the stepper motor can be configured with this register.

Data type	Values
USINT	See the bit structure.

Bit structure:

Bit	Description	Value	Information
0	TriggerEdge	0	Trigger edge (input DI 5) = Positive
		1	Trigger edge (input DI 5) = Negative
1	Enable trigger (when a change occurs) StartTrigger	x	
2 - 7	Reserved	0	

## Register description

### Trigger function procedure

- Selection of the desired trigger edge using bit 0
- Enabling of the trigger function by changing the state of bit 1. Changing this bit deletes usSinceTrigger (microsecond counter).
- Microsecond counter usSinceTrigger is started when the trigger event occurs.
- Counter usSinceTrigger cannot overflow, i.e. the counter is stopped at  $2^{16} - 1$  and retains this value until the next time the trigger function is enabled.

The trigger function can be re-enabled at any time by changing the state of bit 1, regardless of whether a trigger event has occurred or if usSinceTrigger has reached the maximum value.

#### 5.9.8.3 Latch trigger status

Name:

The bits in this register are distributed between motor 1 and motor 2 as follows.

##### Motor 1

LatchInput01

LatchDone01

##### Motor 2

LatchInput02

LatchDone02

##### Motor 1 and 2

TriggerInput

Data type	Values
USINT	See the bit structure.

Bit structure:

Bit		Description		Value	Information
Motor 1	Motor 2	Motor 1	Motor 2		
0	2	LatchInput01	LatchInput02	x	Digital input for the latch event (level)
1	3	LatchDone01	LatchDone02	x	Changes its state each time the counter state is successfully latched (reset value = 0)
4		TriggerInput		x	Trigger input (level)
5 - 7		Reserved		0	

- 1) For motor 1: Digital input DI3 (female connector 3, pin 5)  
For motor 2: Digital input DI6 (female connector 4, pin 5)

#### 5.9.8.4 Trigger timestamp

Name:

TriggerTime01

This register contains the point in time (NetTime) of the most recent trigger event. The trigger edge must be configured in register "[SDC configuration](#)" on page 40.

For additional information about NetTime and timestamps, see "[NetTime Technology](#)" on page 26.

Data type	Values
INT	-32768 to 32767

#### 5.9.8.5 Trigger counter

Name:

TriggerCnt01

This register contains a cyclic counter that is incremented with each trigger event.

Data type	Values
SINT	-128 to 127

#### 5.9.8.6 usSinceTrigger

Name:

usSinceTrigger

This register indicates the time (in microseconds) that has passed since the trigger event occurred (see "[Trigger configuration](#)" on page 55).

Data type	Values
UINT	0 to 65535



## 5.9.9 Module information

### 5.9.9.1 Temperature

Name:

Temperature

The internal module temperature is displayed in °C with this register.

Data type	Values
SINT	-128 to 127

## 5.10 Function models 3 and 254 - Communication registers

### 5.10.1 Motor detection

#### 5.10.1.1 Motor identification

Name:

Motoridentification01 to Motoridentification02

This register is used for differentiation in the application and to identify the connected motor type (for service purposes). After successful measurement, this register contains the time [μs] required to apply a current increase of  $\Delta I = 1$  A to a motor winding.

Data type	Motor ID values	Explanation
UINT	0	No motor identifier available (after switching on for as long as the measurement conditions are not met)
	1 to 32767	Valid range of values for the motor ID register (unit: μs)
	65534	Invalid value: Overflow

### 5.10.2 Motor control

#### 5.10.2.1 Mode

Name:

MpGenMode01 to MpGenMode02

Data type	Values	Information
SINT	0	No mode selected
	1	Depending on bit 0 in the "General configuration" on page 44 register, the position mode will behave as follows: <ul style="list-style-type: none"> <li>Position mode without extended control word: Move to target position as soon as the target position is changed.</li> <li>Position mode with extended control word: Move to the target position as described in "Mode 1: Position mode with extended control word" on page 58.</li> </ul>
	2	Speed mode: Constant speed
	-120	Set home position
	-121	Remaining distance mode
	-122	Set actual position
	-123	Move to target position when external input set
	-124	Two-position mode
	-125	Move to fixed position A
	-126	Move to fixed position B
	-127	Positive homing (see also "Homing configuration" on page 47)
	-128	Negative homing (see also "Homing configuration" on page 47)



### Information:

For all modes: Bit "Target reached" is set in register "Status word" on page 62 when the current action is finished (i.e. when the position or speed is reached, depending on the mode).

A new position or speed can be specified even before the current action is finished.

## Register description

### 5.10.2.1.1 Mode 1: Position mode

The position setpoint is specified in register ["Setting the position/speed" on page 63](#). The motor is then moved to this new position.

How the position is applied can be controlled by bit 0 in register ["GeneralConfig01" on page 44](#).

- If bit 0 equals 0 (no extended control word), the position setpoint will be applied as soon as it is not equal to the current position. The new position is then used for the movement.
- If bit 0 equals 1, the position setpoint is applied as described in ["Mode 1: Position mode with extended control word" on page 58](#).

### 5.10.2.1.2 Mode 1: Position mode with extended control word

The position mode with extended control word behaves like previously described ["position mode 1" on page 58](#) (without extended control word); the difference is that the new position setpoint (["position/speed" on page 63](#) register) is applied by the ["extended control word" on page 58](#).

#### 5.10.2.1.2.1 Extended control word

Commands can be issued using this register depending on the state of the module (see [Operating function model "Ramp"](#)).

Data type	Values
UINT	See the bit structure.

Bit structure:

Bit	Description	Value	Information
0 - 3	Corresponds to the default <a href="#">Control word</a>	x	
4	New setpoint	0	Do not apply target position.
		1	Apply target position.
5	Change set immediately	0	Complete current positioning movement and then start next positioning movement
		1	Interrupt current positioning movement and then start next positioning movement
6	abs / rel	0	Target position is an absolute value.
		1	Target position is a relative value.
7	Corresponds to the default <a href="#">Control word</a>	x	
8	Stop <sup>1)</sup>	0	Execute positioning
		1	Stop axis with deceleration
9 - 15	Corresponds to the default <a href="#">Control word</a>	x	

1) This bit applies to all modes.

#### 5.10.2.1.2.2 Extended status word

The bits in this register reflect the state of the state machine. For a more detailed description, see ["Structure of the status word" on page 31](#) and ["State machine" on page 32](#).

Data type	Values
UINT	See the bit structure.

Bit structure:

Bit	Description	Value	Information
0 - 9	Corresponds to the default <a href="#">Status word</a>	x	
10	Target reached, depends on bit 8 (Stop) in register <a href="#">Control word</a>		<b>If Stop = 0</b>
		0	Target position not reached.
		1	Target position reached
			<b>If Stop = 1</b>
		0	Axis decelerating
		1	Axis speed = 0
11	Corresponds to the default <a href="#">Status word</a>	x	
12	Setpoint acknowledge	0	Ramp generator did not apply the position value
		1	Ramp generator applied the position value
13 - 15	Corresponds to the default <a href="#">Status word</a>	x	

### 5.10.2.1.2.3 Position setting

The target position can be defined in 2 different ways:

Type of setpoint definition	Description
Single setpoint	After the target position is reached, bit Target reached in register <a href="#">Status word</a> is set. A new target position (setpoint) is then defined. The drive stops at each target position before starting the movement to the next target position.
Set of setpoints	After the target position has been reached, the movement to the next target position is started immediately without stopping the drive. It is therefore possible to initiate a new positioning by specifying another target position during active positioning.

The two options "Single setpoint" and "Set of setpoints" are controlled by the timing of bits New setpoint and Change set immediately in the ["extended control word" on page 58](#) and Setpoint acknowledge in the ["extended status word" on page 58](#) register.

### 5.10.2.1.2.4 Relative position setting

If bit abs / rel in [Extended control word](#) is set, then the target position is interpreted as a relative value. At each New setpoint trigger, the target position will be increased by this value (or decreased if the value is negative).

If the mode changes between the position settings, relative movement will then proceed starting at the last specified position. The position setpoint mode is initialized with 0 when the module is started.

### 5.10.2.1.3 Mode 2: Speed mode - Constant speed (pos./neg.)

The value in the ["position/speed" on page 63](#) register is interpreted as the speed setpoint (microsteps/cycle).

Observing the maximum permissible acceleration, the motor moves with a ramp to the desired speed setpoint and maintains this speed until a new speed setpoint is specified.

Values are allowed within the range -65535 to 65535. When a value is entered outside of this range, it is readjusted to these limits.

### 5.10.2.1.4 Mode -120: Set home position

This mode is supported starting with upgrade 1.3.1.1 (firmware version 100).

The current actual position is modified such that the position specified in the ["position/speed" on page 63](#) register is the home position. If moved to this position, the motor is at the home position.

The home position in the ["homed position" on page 63](#) register is also set to this value.

### 5.10.2.1.5 Mode -121: Remaining distance mode (like [mode 1](#))

With a rising or falling edge on digital input 3 or 6, the current target position is discarded and only the number of steps set in register ["FixedPos01a" on page 45](#) will be moved forward or backward.

The ["Homing configuration" on page 47](#) defines whether a rising or falling edge of the digital input is used as a trigger.

### 5.10.2.1.6 Mode -122: Set actual position

The target position set in register ["Position/Speed" on page 63](#) is applied as the current actual position in the internal position counter.

Before this mode is started, the motor must be at a standstill and physically located at the point for which the position being set should be applied.

### 5.10.2.1.7 Mode -123: Move to the target position when the external input is set

The position setpoint set in the ["position/speed" on page 63](#) register is moved to when a rising edge occurs on the corresponding digital input.

A new position setpoint is not applied until another rising edge occurs on the corresponding digital input. This can also occur during the active positioning procedure and will be applied immediately.

## Register description

### 5.10.2.1.8 Mode -124: Two-position mode

The positions to be approached are defined in registers ["Fixed position A"](#) and ["Fixed position B"](#).

Value 1 on the associated digital input moves to fixed position A. Value 0 moves to fixed position B. Toggling is also possible during an active positioning movement.

### 5.10.2.1.9 Mode -125/-126: Move to fixed position X

These modes can be used to move to specified fixed positions.

- Mode -125: ["Fixed position A" on page 45](#)
- Mode -126: ["Fixed position B" on page 45](#)

### 5.10.2.1.10 Mode -127/-128: Positive/Negative homing

Mode -127 or -128 is used to select the direction used for homing. In the ["homing configuration" on page 47](#), it must be specified whether homing should occur at low/high level on the digital input, during stall or unconditionally.

If the homing condition occurs, the motor stops and the values of the position counter and ABR counter valid at the moment when the homing condition occurs are applied to the ["homed zero position" on page 63](#) register.

### 5.10.2.2 Read back mode

Name:

ModeReadback01 to ModeReadback02

The contents of register ["Mode" on page 57](#) can be read back with this register.

Data type	Values
SINT	-128 to 127

### 5.10.2.3 Control word

Name:

MpGenControl01 to MpGenControl02

Using this register, commands can be sent depending on the state of the module (see ["Operating function model "Ramp"" on page 30](#)).

Data type	Values
UINT	See the bit structure.

Bit structure:

Bit	Description	Value	Information
0	Switch on	x	
1	Enable voltage	x	
2	Quick stop	x	
3	Enable operation	x	
4 - 6	Mode-specific	x	
7	Fault reset	x	
8	Stop <sup>1)</sup>	x	
9	CurrentControlEnable	0	Disables load-dependent current control
		1	Enables load-dependent current control
10	Reserved	0	
11	Motor ID trigger	0	No effect
		1	Rising edge: Motor ID trigger <sup>2)</sup>
12	Warning reset	0	No effect
		1	Rising edge: Reset warnings
13	Undercurrent detection	0	Disable current error detection (default)
		1	Enable current error detection
14	Encoder position sync/async	0	Default: <ul style="list-style-type: none"> <li>Internal position counter, cyclic</li> <li>ABR counter, acyclic</li> </ul>
		1	<ul style="list-style-type: none"> <li>Internal position counter, acyclic</li> <li>ABR counter, cyclic</li> </ul>
15	Stall detection	0	Disable stall detection (default)
		1	Enable stall detection

1) Bit "Stop" is only evaluated if the extended control word is enabled (see ["General configuration" on page 44](#)).

2) This bit can be used to trigger a measurement of the motor ID. Keep in mind that the application must ensure that the conditions for measurement are fulfilled (see table in register ["Motor identification" on page 57](#)).

### 5.10.2.4 Reading back the control word

Name:

ControlReadback01 to ControlReadback02

The contents of register ["Control word" on page 61](#) can be read back with this register.

Data type	Values
UINT	0 to 65535

## Register description

### 5.10.2.5 Status word

Name:

MpGenStatus01 to MpGenStatus02

The bits in this register reflect the state of the state machine. For a more detailed description, see "[Structure of the status word](#)" on page 31 and "[State machine](#)" on page 32.

Data type	Values
UINT	See the bit structure.

Bit structure:

Bit	Description	Value	Information
0	Ready to switch on	x	
1	Switched on	x	
2	Operation enabled	x	
3	Fault (error bit)	x	
4	Voltage enabled	x	
5	Quick stop	x	
6	Switch on disabled	x	
7	Warning	x	
8	Reserved	0	
9	Remote	1	Always 1
10	Target reached	x	
11	Internal limit active	0	No limit violation
		1	Internal limit is active (upper or lower software limit violated)
12	Mode-specific	x	
13 - 15	Reserved / MotorLoadBit	0	Always 0 if bit 7 in register " <a href="#">Stall detection configuration / Mixed decay</a> " on page 46 is set to 0.
		x	Returned motor load value

### 5.10.3 Input state

#### 5.10.3.1 Digital input status

Name:

InputStatus

This register indicates the logical states of digital inputs.

Data type	Values
USINT	See the bit structure.

Bit structure:

Bit	Description	Value	Information
0	Digital input 1	0 or 1	Input state - Digital input 1
...		...	
5	Digital input 6	0 or 1	Input state - Digital input 6
6 - 7	Reserved	0	

## 5.10.4 Error handling

### 5.10.4.1 Error code

Name:

ErrorCode01 to ErrorCode02

The cause of an error or warning can be read in this register:

Data type	Error code	Error type	Priority	Description
UINT	0x0000	-	-	No error
	0x3000	Error	High ↓ ↓ ↓ ↓ ↓ ↓ Low	Voltage
	0x4200	Error		Overtemperature
	0xFF20	Warning		Negative limit switch
	0xFF21	Warning		Positive limit switch
	0x2300	Warning		Overcurrent
	0xFF00	Warning		Current error <sup>1)</sup>
	0xFF01	Warning		Stall <sup>2)</sup>
	0xFF11	Warning		Open circuit

1) A current error is only detected if bit 13 = 1 in the [control word](#) (current error detection enabled).

2) Stall is only detected if bit 15 = 1 in the [control word](#) (stall detection enabled).

Information regarding the handling of errors and warnings:

- Bit 3 (Fault) and bit 7 (Warning) in the ["status word" on page 62](#) can be used to query whether an error or a warning was reported in the error code register.
- Bit 7 (Fault reset) and bit 12 (Warning reset) in the ["control word" on page 30](#) are used to acknowledge pending errors and warnings.
- If two or more errors/warnings are pending, the one with the highest priority (the order in the table above) will be displayed in the error code register.

## 5.10.5 Homing

### 5.10.5.1 Homing to the zero position

Name:

RefPos01CyclicCounter to RefPos02CyclicCounter

RefPos01AcyclicCounter to RefPos02AcyclicCounter

After a homing procedure, the homing point for the cyclic or acyclic position counter can be read back with these registers (either the internal position counter or ABR counter depending on bit 14 of register ["Control word" on page 61](#)).

The following two registers are provided for each motor:

- Homed zero position for cyclic counter
- Homed zero position for acyclic counter

Data type	Values
DINT	-2,147,483,648 to 2,147,483,647

## 5.10.6 Positioning and speed

### 5.10.6.1 Setting the position/speed

Name:

AbsPos01 to AbsPos02

This register is used to set position or speed, depending on the operating mode.

- Position mode (see ["Mode" on page 57](#)): Cyclic setting of the position setpoint in microsteps. One microstep is always 1/256 of a full step in this mode.
- Speed mode (see ["Mode" on page 57](#)): In this mode, this register is considered a signed speed setpoint.

Data type	Values
DINT	-2,147,483,648 to 2,147,483,647

## Register description

### 5.10.6.2 Current position - Cyclic

Name:

AbsPos01ActVal to AbsPos02ActVal

This cyclic register contains the current position.

Default: Value of the internal position counter, possible to switch to ABR counter

Data type	Values
DINT	-2,147,483,648 to 2,147,483,647

### 5.10.6.3 Current position - Acyclic

Name:

AbsPos01ActValAcyclic to AbsPos02ActValAcyclic

This acyclic register contains the current position.

Default: Value of the ABR counter, can be changed to internal position counter

Data type	Values
DINT	-2,147,483,648 to 2,147,483,647

## 5.10.7 Module information

### 5.10.7.1 Temperature

Name:

Temperature

The internal module temperature is displayed in °C with this register.

Data type	Values
SINT	-128 to 127

## 5.11 Minimum cycle time

The minimum cycle time specifies how far the bus cycle can be reduced without communication errors occurring. It is important to note that very fast cycles reduce the idle time available for handling monitoring, diagnostics and acyclic commands.

Minimum cycle time	
All function models	250 µs

## 5.12 Minimum I/O update time

The minimum I/O update time specifies how far the bus cycle can be reduced so that an I/O update is performed in each cycle.

Minimum I/O update time	
Function model "Standard"	250 µs
Function model ARNC0	250 µs
Function model "Ramp"	
Inputs	250 µs
Outputs <sup>1)</sup>	25 ms

1) Depends on the configuration of the ["movement profile generator"](#) on page 44