



PNEUMATIC PRESSURE SWITCH: SERIES ISG

- ✓ ISG pressure switches are widely used in industrial machines and power plant applications to give automatic pressure control
- ✓ Easy adjustment by external spanner is provided. Pressure setting is clearly seen with the use of a scale
- ✓ High reliability and long life
- ✓ Adjustable differential

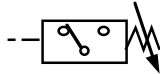


TECHNICAL SPECIFICATIONS

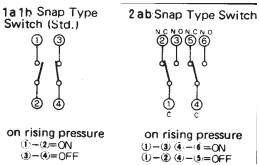
Fluid	Air, non corrosive water, oil gases*
Pressure setting range	0.5-10 Bar
Adjustable differential	0.3-6 Bar
Max. operating pressure	15 Bar
Electrical contacts	1a, 1b Dual Contact
Electrical entry	Grommet
Inlet port size	R 1/8 (male)
Ambient and fluid temp.	Max. 60°C
Weight	1.3 kg

*Materials in contact with fluid, phosphor bronze/brass

SYMBOLS



CONTACTS



ELECTRICAL CAPACITY

Voltage	AC amps		DC amps	
	Instantaneous peak current	Switch cut-off current	Instantaneous peak current	Switch cut-off current
24	—	—	8	3
48	—	—	6	1.5
110	30	12	4	0.5
220	20	10	2	0.25
440	15	6	—	—
550	10	5	—	—

Insulation resistance 100 m. Ohm min at 500V DC
Test voltage AC 2000V for 1 minute

HOW TO ORDER

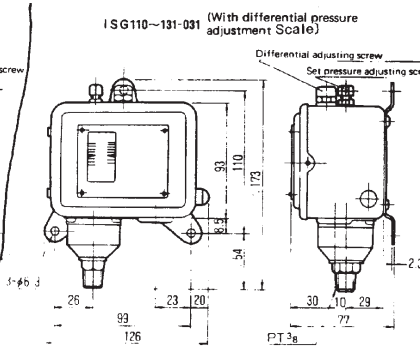
PNEUMATIC PRESSURE SWITCH: SERIES ISG

ISG130-031

STOCKED PRODUCTS
FOR A LIST OF STOCKED PRODUCTS,
PLEASE SEE THE CURRENT SMC PRICE LIST

DIMENSIONS

PNEUMATIC PRESSURE SWITCH: SERIES ISG



- Do not set differential below the minimum specified.
 - The scale is for reference use only. Use gauge for accurate setting.
- Installation:
- The switch can be installed vertically or horizontally.
 - Surge absorber should be used in liquid lines to avoid pulsating pressure.
 - Ensure wiring is clear of mechanism movement.
 - When wiring industrial type non water proof units ensure earth wire is fitted.



FOR FURTHER TECHNICAL
DETAILS ON THIS
PRODUCT CONTACT
YOUR LOCAL REGIONAL
CENTRE

COMPACT PRESSURE SWITCH: SINGLE CONTACT SERIES IS1000

- ✓ Compact and light weight (50mm x 23mm x 15mm)
- ✓ Operational pressure set made easy by scale plate
- ✓ Shield plate attached to prevent external magnetic interference
- ✓ Long life

TECHNICAL SPECIFICATIONS

Model	IS1000-01
Proof pressure	1.0 MPa (10 Bar)
Max. operating pressure	0.7 MPa (7Bar)
Pressure range: -X201	0.1~0.4 MPa (1~4 Bar)
Pressure range: -X215	0.15~0.6 MPa (1.5~6 Bar)
Differential	0.08 MPa (0.8 Bar) or less
Contact	1a single contact (low pressure, no contact)
Electrical entry	Grommet•Lead wire length 3metre
Fluid	Air
Ambient and fluid temperature	5~60°C
Port size	R 1/8 (Male)

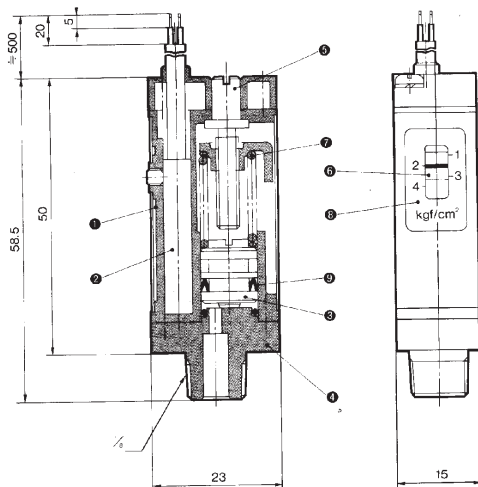
SWITCH CHARACTERISTICS

Max. contact capacity	2V (AC), 2W (DC)		
Voltage	24V AC, DC or less	48V AC, DC	100V AC, DC
Max. operating current	50mA	40mA	20mA
Shock resistance	30G		
Response time	1.2ms		

*Note. Not suitable for 240V AC

DIMENSIONS

COMPACT PRESSURE SWITCH: SERIES IS1000

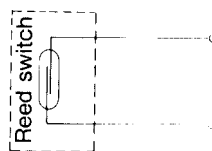


SEE INSIDE FRONT COVER FOR
DETAILS OF YOUR LOCAL SALES OFFICE

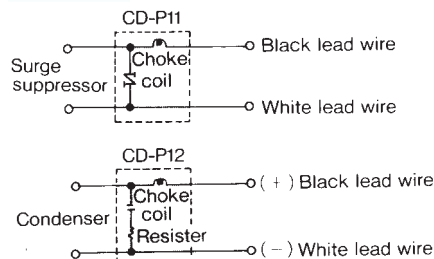


ELECTRICAL CIRCUIT

Up to 100V AC/DC

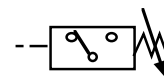


CONTACTS



- When detecting ON-pressure signal, note that set pressure on scale plate plus ON-OFF differential will be ON-pressure signal.
- Don't use with corrosive fluids.
- When piping switch by hand, hold body not wires.
- Electrical wire must not be subjected to excessive force.

SYMBOLS



HOW TO ORDER

COMPACT PRESSURE SWITCH: SERIES IS1000

IS1000 — 01 —

PORT THREAD
01 ...1/8

	Set Pressure Range	Lead Wire Length
-X201	1~4 bar	3m
-X215	1.5~6 bar	3m

STOCKED PRODUCTS

FOR A LIST OF STOCKED PRODUCTS,
PLEASE SEE THE CURRENT SMC PRICE LIST

ACCESSORIES

COMPACT PRESSURE SWITCH: SERIES IS1000 FOR USE IF WIRING LENGTH > 5M

CD-P11Contact protection box (100V AC)
CD-P12Contact protection box (24V DC)

STOCKED PRODUCTS

FOR A LIST OF STOCKED PRODUCTS,
PLEASE SEE THE CURRENT SMC PRICE LIST



FOR FURTHER TECHNICAL
DETAILS ON THIS
PRODUCT REQUEST
CATALOGUE REFERENCE
E405