



Data Sheet	LAI-3330-PM-WP-LW500
------------	----------------------

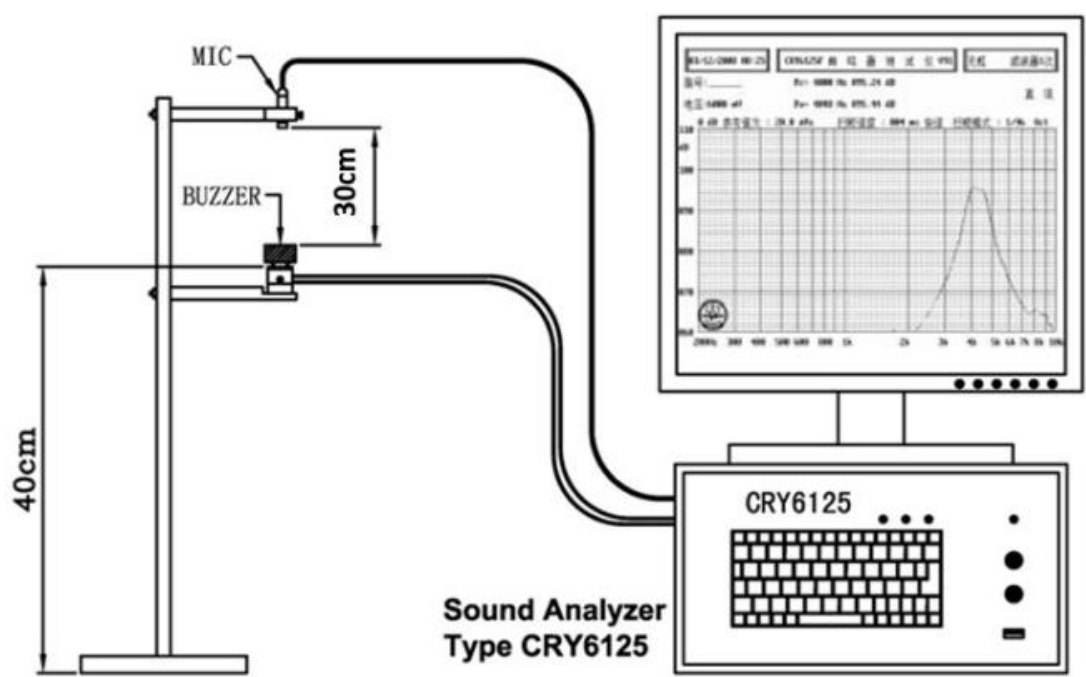
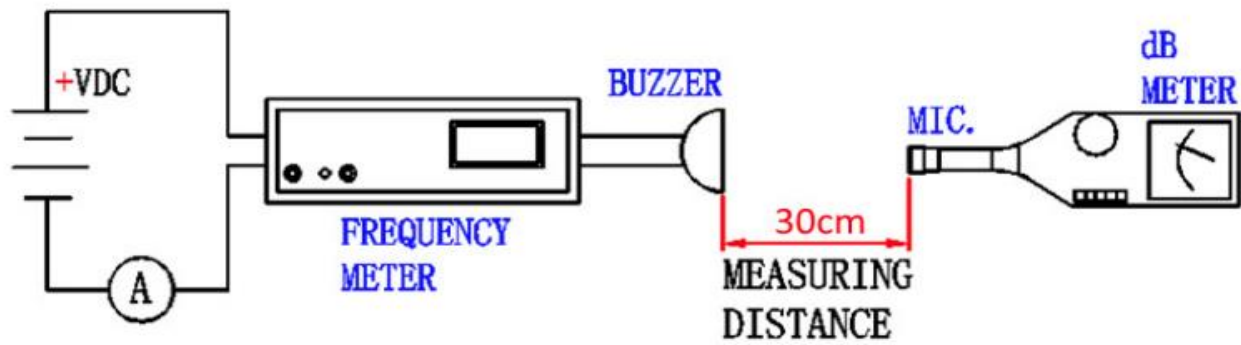
PUI Audio's multi-lighted buzzer is designed for low current consumption while delivering high output at 3000 Hz with lead wires for easy installation.

- Low current draw of less than 25 mA at 12 VDC
- Minimum 104 dBA output with 12 VDC input at 10 cm.
- -20°C to +70°C operating temperature

Specifications

Parameters	Values	Units
Rated Voltage	12	VDC
Operating Voltage Range	3 ~ 15	VDC
Current Draw at Rated Voltage	≤25	mA
Minimum SPL @ 30cm	≥95	dBA
Resonant Frequency	3000 ± 500	Hz
Housing Material	PC	-
IP Rating (Waterproof)	IP68	-
Tone	Constant	-
LED Color	Red+Green+Blue	-
Environmental Compliances	RoHS	-
Storage Temperature	-30 ~ +80	°C
Operating Temperature	-20 ~ +70	°C
Weight	17.8	Grams

Measurement Method (12 VDC, 30cm)

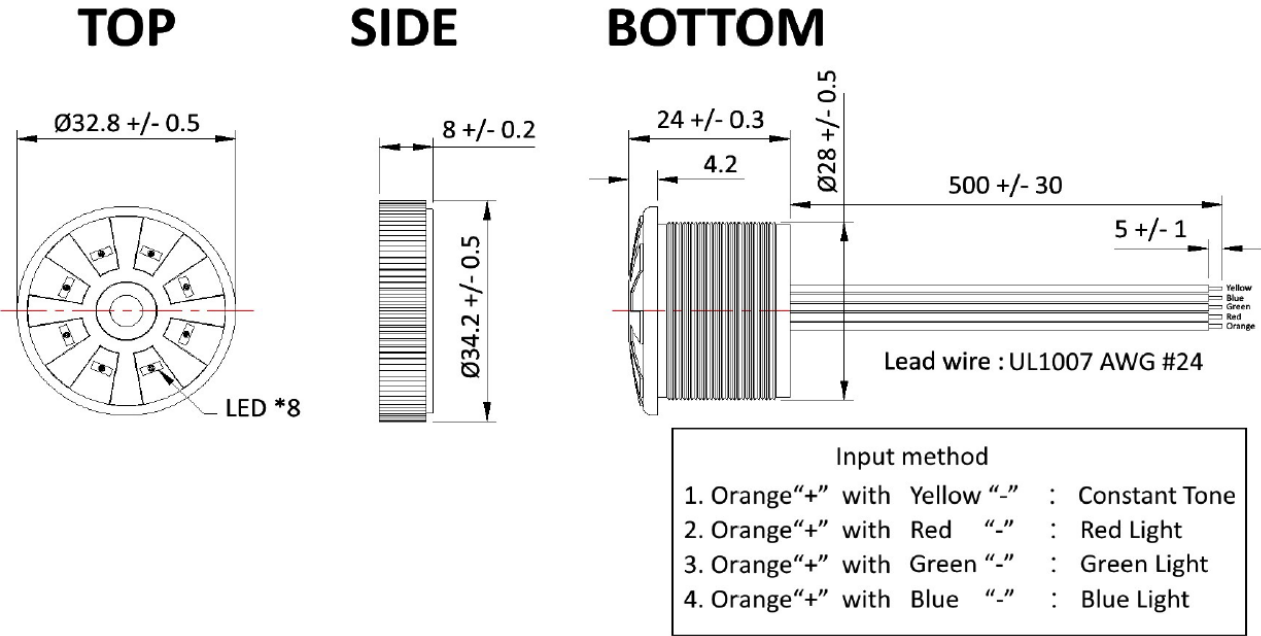


Reliability Testing

Type of Test	Test Specifications
High Temperature Test	The part shall be exposed to +80°C for 98 hours, then to room temperature for 2 hours.
Low Temperature Test	The part shall be exposed to -30°C for 98 hours, then to room temperature for 2 hours.
Humidity Test	The part shall be exposed to 40°C for 98 hours with 95%RH, then to room temperature for 2 hours.
Vibration Test	The part shall be subjected to a vibration cycle of 2000 cycles per minute, at an amplitude of 2mm applied in X, Y and Z directions, for 30 minutes each. For a total of 90 minutes.
Drop Test	Drop part from 75cm height onto the ground.
Durability Test	The part shall be tested after 98 hours of actual continuous operation, at standard measurement conditions.

After the test the part shall meet specifications without any degradation in appearance and performance.

Dimensions (Tolerance: ±0.5mm Except when Specified)



Packaging

Box	50 pcs
	10 boxes per carton
Carton	500 pcs
	Size = 520 x 335 x 290 mm
Net Weight	13.9 kg
Gross Weight	15.9 kg

Specifications Revisions			
Revision	Description	Date	Approved
A	Released from Engineering	12/19/2024	NK

Note:

- 1. Unless otherwise specified:
 - A. All dimensions are in millimeters.
 - B. Default tolerances are $\pm 0.5\text{mm}$ and angles are $\pm 3^\circ$.
- 2. Specifications subject to change or withdrawal without notice.