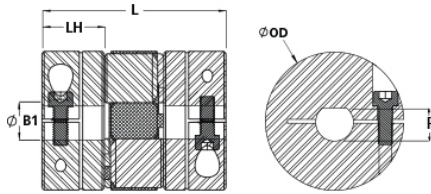




MJC25-7/6.5D-A

Ruland MJC25-7/6.5D-A, 7/6.5Dmm Jaw Coupling Hub, Aluminum, Clamp Style with D-Bore, 25.4mm OD, 11.9mm Length



Description

Ruland MJC25-7/6.5D-A is a clamp d-bore zero-backlash jaw coupling hub with a 7/6.5D bore, 25.4mm OD, and 35.3mm length. The d-bore allows for positive drive in applications where the coupling can not slip. It is a component in a three-piece design consisting of two aluminum hubs and an elastomeric insert called the spider creating a lightweight low inertia coupling capable of speeds up to 8,000 RPM. This three-piece design allows for a highly customizable coupling that easily combines clamp or set screw hubs with inch, metric, keyed, and keyless bores. Spiders are available in three durometers allowing the user to tailor the performance of the coupling to their application. Ruland jaw couplings have a balanced design for reduced vibration at high speeds. Hardware is metric and tests beyond DIN 912 12.9 standards for maximum torque capabilities. MJC25-7/6.5D-A is machined from bar stock that is sourced exclusively from North American mills and is RoHS3 and REACH compliant. It is manufactured in our Marlborough, MA factory under strict controls using proprietary processes.

Product Specifications

Bore (B1)	7/6.5D mm	Flat (F)	6.50 mm
Flat Tolerance	+0.002"/-0.000"	B1 Max Shaft Penetration	11.9 mm
Outer Diameter (OD)	1.000 in (25.4 mm)	Bore Tolerance	+0.03 mm / -0.00 mm
Hub Width (LH)	11.85 mm	Length (L)	1.390 in (35.3 mm)
Recommended Shaft Tolerance	+0.000 mm / -0.013 mm	Forged Clamp Screw	M3
Number of Screws	1 ea	Screw Material	Alloy Steel
Screw Finish	Black Oxide	Hex Wrench Size	2.5 mm
Seating Torque	2.1 Nm	Torque Specifications	Torque ratings vary with insert selection
Misalignment	Misalignment ratings vary with insert selection	Maximum Speed	8,000 RPM
Moment of Inertia	$1.5030 \times 10^{-5} \text{ kg-m}^2$	Full Bearing Support Required?	Yes
Recommended Inserts	JD16/25-98R , JD16/25-92Y , JD16/25-85B	Zero-Backlash?	Yes
Balanced Design	Yes	Fail Safe?	Yes
Weight (lbs)	0.036598	Temperature	-10°F to 180°F (-23°C to 82°C)
Material Specification	2024-T351 Aluminum Bar	Finish	Bright
Finish Specification	Bright, No Plating	Manufacturer	Ruland Manufacturing
Recommended Gap Between Hubs	0.030 in (0.75 mm)	Country of Origin	USA
UPC	65432942051	UNSPC	31163011
Tariff Code	8483.60.8000		
Note 1	Stainless steel hubs are available upon request.		
Note 2	Performance ratings are for guidance only. The user must determine suitability for a particular application.		
Note 3	Torque ratings for the couplings are based on the physical limitations/failure point of the spiders. Under normal/typical conditions the hubs are capable of holding up to the nominal torque of the spiders. Please consult technical support for more assistance.		