

# EV-T2SOCCR-PA-WL - Protective cover



1531959

<https://www.phoenixcontact.com/gb/products/1531959>

Please be informed that the data shown in this PDF document is generated from our online catalog. Please find the complete data in the user documentation. Our general terms of use for downloads are valid.



CHARX connect modular, Type 2, Protective cover, Accessories, Premium, circular, Front mounting, M5 thread, with self-locking mechanism, with LED (common anode connection), for attaching to infrastructure charging sockets, Without logo, IEC 62196-2

## Product description

Self-closing protective cover for infrastructure charging socket

## Your advantages

- Developed and produced in accordance with the IATF 16949 automotive standard and ISO 9001
- Individual branding, thanks to the use your own logo
- Reliable protection of your socket outlet from weather and vandalism

## Commercial data

Item number	1531959
Packing unit	1 pc
Minimum order quantity	1 pc
Sales key	XWBAFC
Product key	XWBAFC
GTIN	4067923000377
Weight per piece (including packing)	22.22 g
Weight per piece (excluding packing)	228 g
Customs tariff number	39269097
Country of origin	DE

# EV-T2SOCR-PA-WL - Protective cover



1531959  
<https://www.phoenixcontact.com/gb/products/1531959>

## Technical data

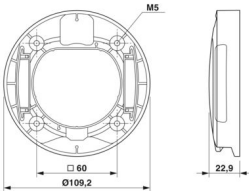
### Product properties

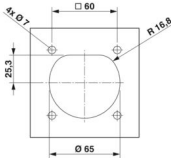
Product type	Protective cover for Socket Outlet
Product family	CHARX connect modular
Application	for attaching to infrastructure charging sockets
Design (Protective cover)	circular
Type	Accessories
	Premium
Design	with self-locking mechanism
	with LED (common anode connection)
Compatibility	compatible with shutter, see accessories
Affixed logo	Without logo
Charging standard	Type 2
Charging mode	Mode 3, Case B
Customer variations	On request

### Electrical properties

LED function	
Application	to display the charging status
Position	in the frame of the protective cover
Connection type	common anode

### Dimensions

Protective cover	
Dimensional drawing	
Depth	22.9 mm
Diameter	109.2 mm

Bore dimensions	
Dimensional drawing	
Width	60 mm

# EV-T2SOOCR-PA-WL - Protective cover



1531959

<https://www.phoenixcontact.com/gb/products/1531959>

Height	60 mm
--------	-------

## Mechanical properties

Type of cover movement	Self-locking
------------------------	--------------

## Environmental and real-life conditions

### Ambient conditions

Degree of protection (Protective cover)	IP54
	IK08
Ambient temperature (operation)	-30 °C ... 50 °C
Ambient temperature (storage/transport)	-40 °C ... 80 °C
Altitude	5000 m (above sea level)

## Standards and regulations

### Standards

Standards/regulations	IEC 62196-2
-----------------------	-------------

## Mounting

Mounting type Protective cover	Front mounting (rear screw connection)
Fixing screws	M5 thread

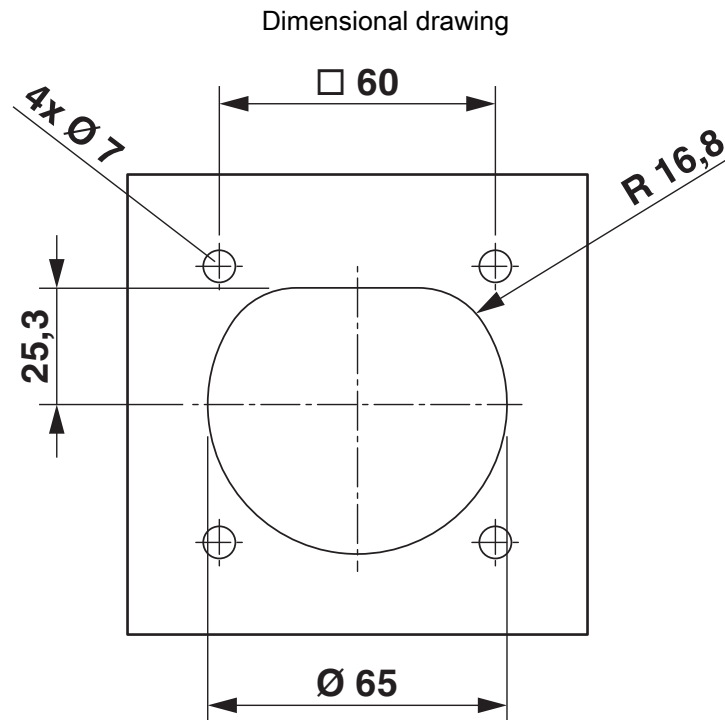
# EV-T2SOOCR-PA-WL - Protective cover

1531959

<https://www.phoenixcontact.com/gb/products/1531959>



## Drawings



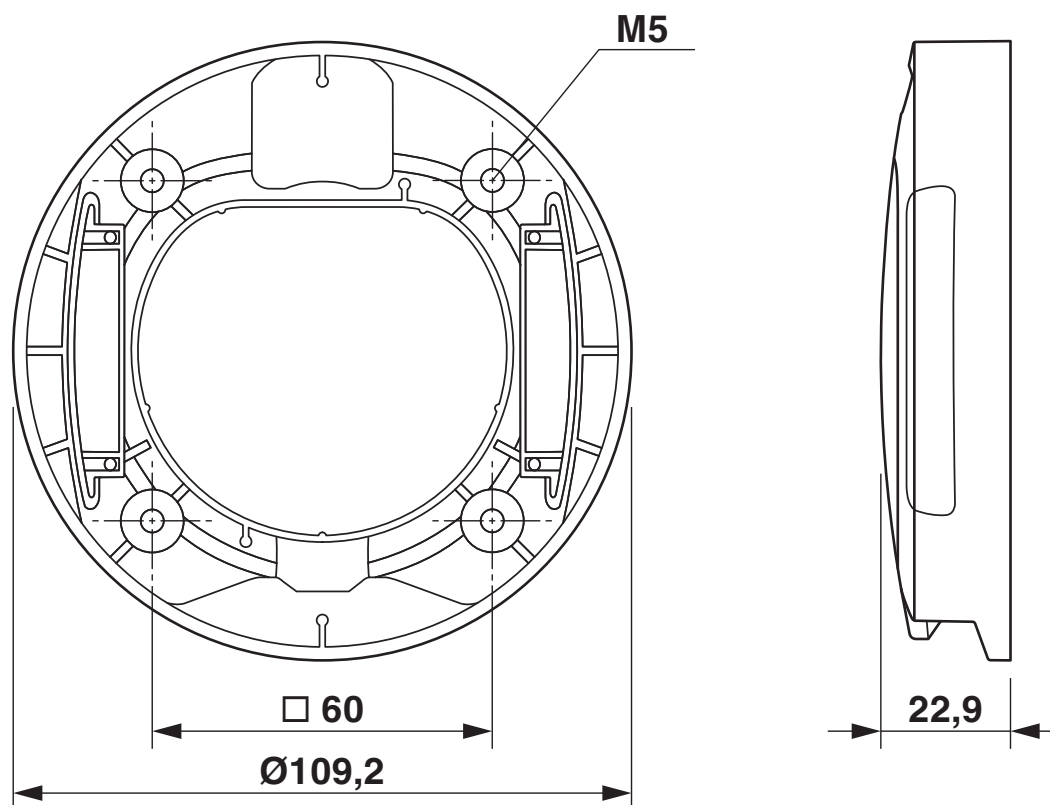
# EV-T2SOCR-PA-WL - Protective cover

1531959

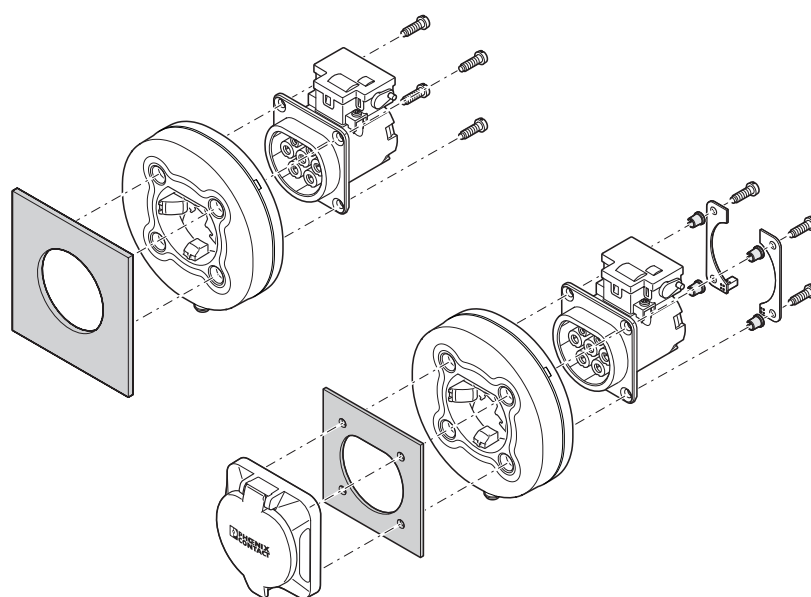
<https://www.phoenixcontact.com/gb/products/1531959>



Dimensional drawing



Exploded view



Rear mounting

# EV-T2SOCR-PA-WL - Protective cover



1531959

<https://www.phoenixcontact.com/gb/products/1531959>

## Classifications

### ECLASS

ECLASS-13.0	27144792
-------------	----------

### ETIM

ETIM 9.0	EC002884
----------	----------

# EV-T2SOCR-PA-WL - Protective cover



1531959

<https://www.phoenixcontact.com/gb/products/1531959>

## Environmental product compliance

### EU RoHS

Fulfills EU RoHS substance requirements	Yes
Exemption	6(c)

### China RoHS

Environment friendly use period (EFUP)	EFUP-10
	An article-related China RoHS declaration table can be found in the download area for the respective article under "Manufacturer declaration". For all articles with EFUP-E, no China RoHS declaration table issued and required.

### EU REACH SVHC

REACH candidate substance (CAS No.)	Lead(CAS: 7439-92-1)
SCIP	04752027-a113-4a1c-81b0-2fda9ce42585

Phoenix Contact 2025 © - all rights reserved

<https://www.phoenixcontact.com>

PHOENIX CONTACT Ltd  
Halesfield 13, Telford  
Shropshire, TF7 4PG  
01952 681700  
[info@phoenixcontact.co.uk](mailto:info@phoenixcontact.co.uk)