

TEST/CHARACTERISTICS	STANDARD REFERENCE	VALUES/REMARKS		
----------------------	--------------------	----------------	--	--

ELECTRICAL CHARACTERISTICS

Impedance		50 Ω		
Frequency range		DC-4 GHz		
Typical V.S.W.R. <i>Straight models cable group : 2/50, 2.6/50, 5/50, 10 + 11/50, .141"</i> <i>Right angle models 2/50, 2.6/50, 5/50,</i>		1 GHz 1.12	2.5 GHz 1.18 1.30 max	4 GHz 1.22
Insertion loss <i>straight connector</i> <i>right-angle connector</i>		0.05 0.08	0.07 0.16	0.13 0.20
RF Leakage		- 55 dB min from 2 to 3 GHz		
Insulation resistance		5000 MΩ min	5000 MΩ min	5000 MΩ min
Contact resistance <i>center contact</i> <i>outer contact</i>	MIL	1.5 mΩ 0.2 mΩ		
Working voltage in VRMS <i>at sea level</i> <i>(at 21 000m)</i>		500 125		
Dielectric withstanding voltage in VRMS <i>at sea level</i> <i>(at 21 000m)</i>		1500 375		
RF testing voltage in VRMS <i>sea level (5 MHz)</i>		1000		

MECHANICAL CHARACTERISTICS

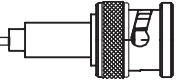
Durability		500 matings		
Force to engage and disengage <i>axial torque</i>		13.6 N max 28.6 Ncm		
Coupling nut retention force	MIL	445 N		
Cable retention force <i>cable 2/50, 2.6/50</i> <i>cable 5/50, 10 + 11/50</i> <i>cable .141"</i>		227 N		
Center contact retention force		27.2 N		

ENVIRONMENTAL CHARACTERISTICS

Temperature range <i>flexible cables</i> <i>semi-rigid cables</i>	MIL	- 65°C + 165°C - 65°C + 105°C		
Thermo cycling test		MIL STD 202, method 107, condition B		
Thermal shock		MIL STD 202, method 107, condition B		
Hight temperature endurance		MIL STD 202, method 108		
Corrosion salt spray		MIL STD 202, method 101, condition B		
Vibration		MIL STD 202, method 204, condition B		
Shock		MIL STD 202, method 213, condition G		
Moisture resistance		MIL STD 202, method 106		
Hermetic test		MIL STD 202, method 112, condition C vacuum 10 ⁻⁶ Hgmm (Torr) leakage rate < 10 ⁻⁶ atm/cm ³ /s		
Barometric pressure		Pressure test : 3.5 bars; duration : 2 mn; temperature : 15° C to 25 °C		

BNC 50 Ω

CHARACTERISTICS



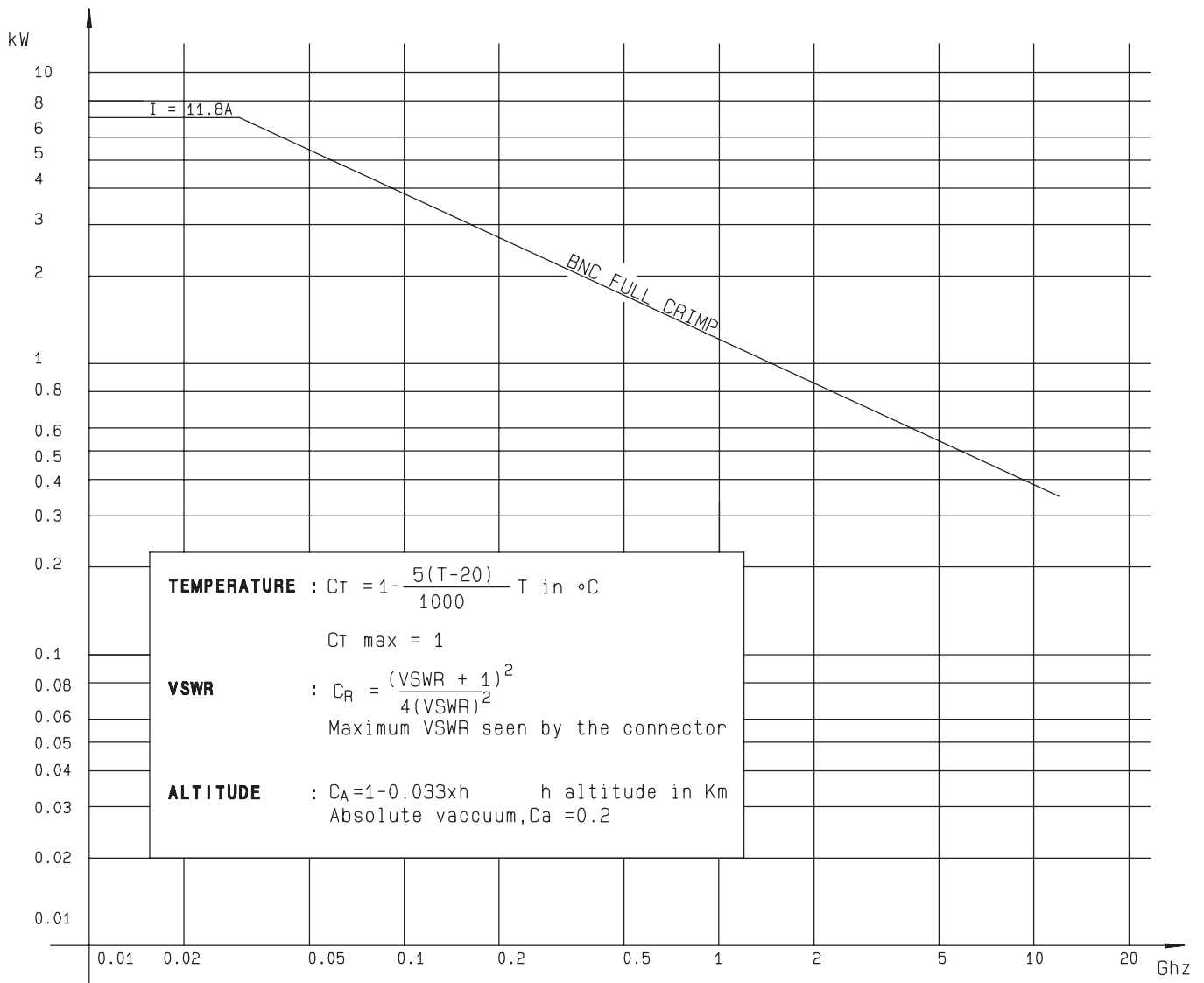
MATERIALS

Bodies		Brass
Center contact	<i>male</i> <i>female</i>	Brass Bronze or heat treated beryllium following QQ-C-530
Nut		Brass
Insulator		PTFE
Gasket		Silicon rubber

PLATINGS

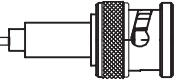
Bodies		Nickel
Center contacts		Gold

POWER RATING



Standard packaging : unit

All dimensions are given in mm.



FLANGE RECEPTACLES

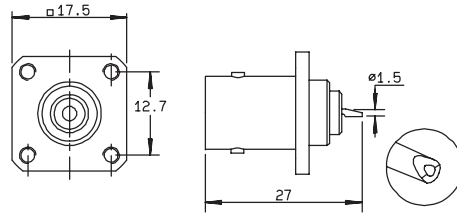
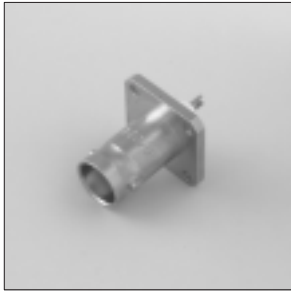


Fig. 1

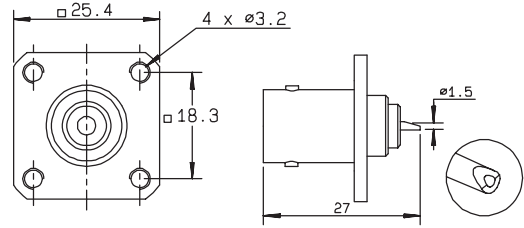


Fig. 2

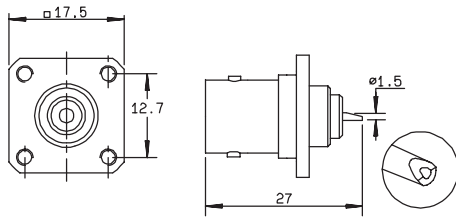


Fig. 3

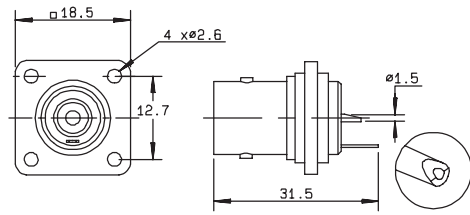


Fig. 4

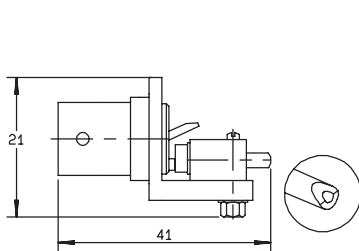


Fig. 5

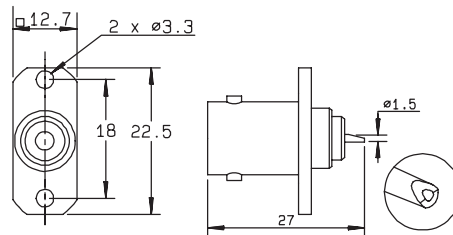


Fig. 6

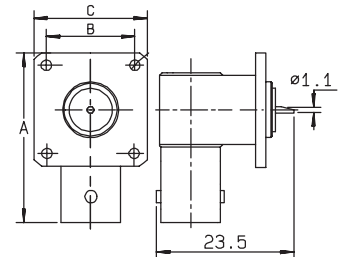


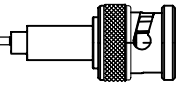
Fig. 7

part number	fig.	dimensions			captive center contact	cut out	flange holes	note
		A	B	C				
R141 403 000	1				yes	P14	4 x M2.5	
R141 403 500●	2				yes	P13		flange dimensions of N series (1)
R141 404 000	3				yes	P11	4 x M2.5	
R141 406 000*	1				yes	P14	4 x 2.6	
R141 407 000	3				yes	P11	4 x 2.6	
R141 410 000	4				yes	P02		insulated flange/solder tag
R141 439 000	5				yes	P12	4 x M2.5	auxiliary contact
R141 453 000	6				yes	P16		2 hole flange
R141 653 000	7	27.6	13.5	19	yes	P18	4 x 3.3	right angle receptacle
R141 654 000	7	26.9	12.7	17.5	yes	P19	4 x 2.6	right angle receptacle

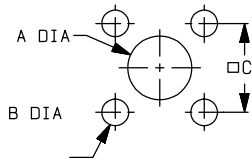
(1) Ask our catalog D1 161 CE for N series.

● Upon request

* Packaging = 100 pieces.

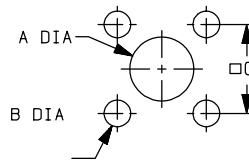


P17



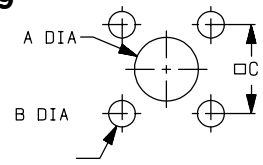
MM		
	maxi	mini
A	7.9	7.8
B	2.7	2.6
C	12.75	12.65

P18



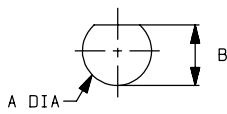
MM		
	maxi	mini
A	8.3	8.2
B	3.4	3.3
C	13.55	13.45

P19



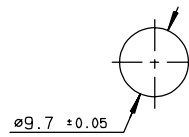
MM		
	maxi	mini
A	8.3	8.2
B	2.7	2.6
C	12.75	12.65

P20

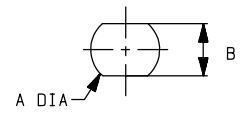


MM		
	maxi	mini
A	11.25	11.15
B	10.43	10.35

P21

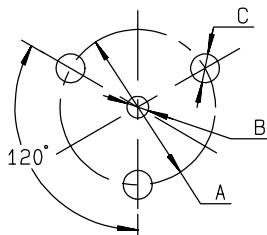


P22



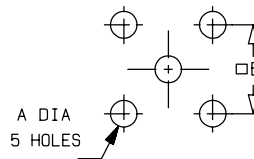
MM		
	maxi	mini
A	9.75	9.65
B	8.65	8.55

P23



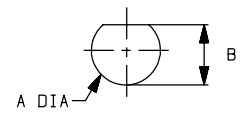
MM		
	maxi	mini
A	8.65	8.55
B	1.3	1.1
C	1.7	1.5

P24



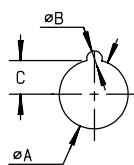
MM		
	maxi	mini
A	1.4	1.2
B	10.21	10.11

P25



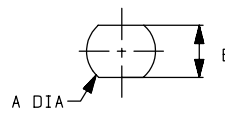
MM		
	maxi	mini
A	12.9	12.8
B	12.15	12.05

P26



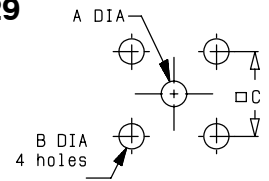
MM		
	maxi	mini
A	16.35	16.25
B	2.43	2.38
C	7.97	7.87

P27



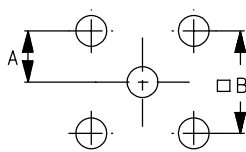
MM		
	maxi	mini
A	15.9	15.8
B	13.6	13.5

P29



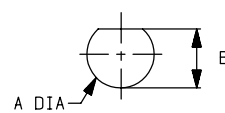
MM		
	maxi	mini
A	1.4	1.3
B	2.1	2.2
C	6.65	6.55

P30



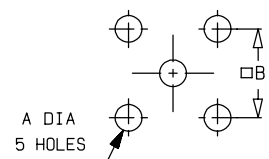
MM		
	maxi	mini
A	3.835	3.785
B	7.67	7.57

P31



MM		
	maxi	mini
A	12.9	12.8
B	12.15	12

P32



MM		
	maxi	mini
A	5.105	5.055
B	10.21	10.11