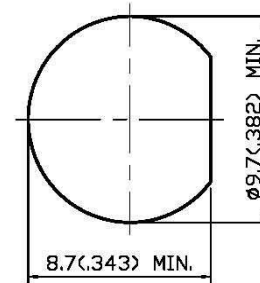
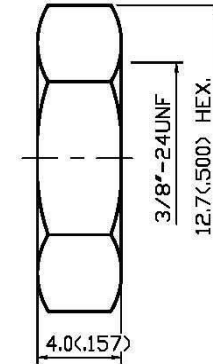
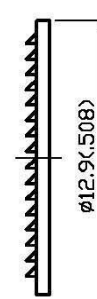
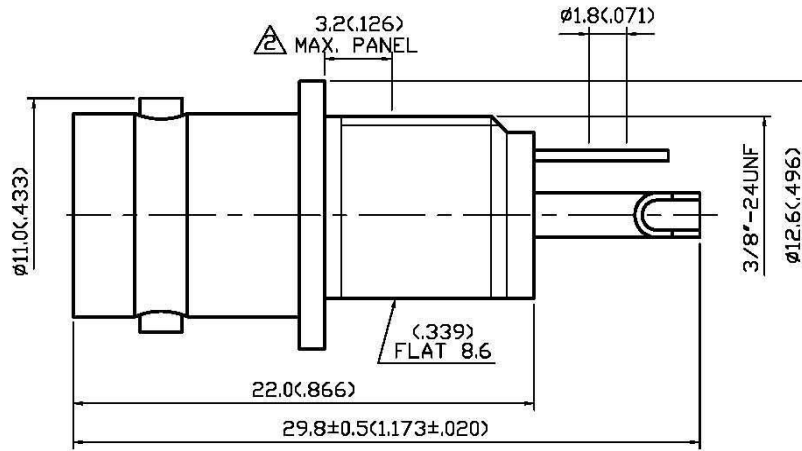


NO	DESCRIPTION	DATE
⚠	MODIFY PARTS ④ ⑦	03.25.11'
⚠	ADD VSWR; 3.2 MAX. PANEL	03.23.12'
⚠	WORKING VOLTAGE → VOLTAGE RATING DEL. PROOF VOLTAGE	05.03.13'



MOUNTING HOLE

1.0 ELECTRICAL

- 1.1 FREQUENCY RANGE: DC-4 GHz
- 1.2 NOMINAL IMPEDANCE: 50 OHMS
- 1.3 VOLTAGE RATING: 500 VOLTS MAX. ⚠
- 1.4 VSWR: 1.3 MAX. @1 GHz ⚠

2.0 MATERIALS

- 2.1 BODIES: BRASS PER JIS-C3604
- 2.2 CENTER CONTACT: BRASS PER JIS-C3804

3.0 FINISHES AND OTHERS

- 3.1 SEE BELOW TABLE FOR DETAILS.

4.0 ENVIRONMENTAL

- 4.1 OPERATING TEMPERATURE RANGE: -40° C TO +80° C

NO	DESCRIPTION	MATERIAL	Q'TY	FINISH
7	CENTER CONTACT	BRASS	1	GOLD
6	BODY I	ABS	1	NONE
5	GROUNDING TAB	BRASS	1	TIN 120 μ" MIN.
4	BODY II	BRASS	1	NICKEL 100 μ" MIN.
3	WASHER	BRASS	1	NICKEL 100 μ" MIN.
2	NUT	BRASS	1	NICKEL
1	WASHER	STEEL	1	NICKEL



APPROVED by _____ DATE: _____

DESCRIPTION		BNC STRAIGHT ISOLATED BULKHEAD JACK RECEPTACLE							
製圖	DRAWN	TOLERANCE	品名	13-28	ABS.G.N	日期	DATE	版次	REV.
檢圖	Yoko	X ±0.2	TITLE	ROHS COMPLIANT (50Ω)		12.10.92'		B-3	
認圖	CHECK	.XX ±0.1	單位	mm(in)	DWG.NO.	13-0201			
	Ivan	.XXX ±0.05	比例	SCALE	5464910				
	Angela	ANGLE ±5°							