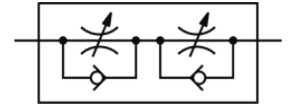
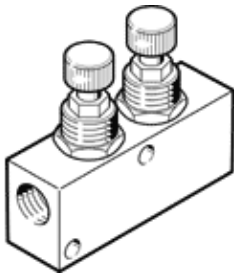


# one-way flow control valve GR-M5X2-B

Part number: 152611

FESTO



## Data sheet

Feature	Value
Valve function	One-way flow control function
Pneumatic connection, port 1	M5
Pneumatic connection, port 2	M5
Adjusting element	Knurled screw
Mounting type	Optional Front panel installation with through hole
Standard nominal flow rate in flow control direction	95 l/min
Standard nominal flow rate in non-return direction	75 l/min
Operating pressure	0.5 ... 10 bar
Ambient temperature	-20 ... 60 °C
Material housing	Wrought Aluminium alloy
Assembly position	Any
Operating medium	Compressed air in accordance with ISO8573-1:2010 [7:4:4]
Note on operating and pilot medium	Lubricated operation possible (subsequently required for further operation)
Medium temperature	-20 ... 60 °C
Nominal size	2 mm
Product weight	37 g
Materials note	Conforms to RoHS
Material seals	NBR
Material sleeve	POM
Material adjusting screw	High alloy steel
Material nut	Wrought Aluminium alloy