

QR1



AVENTICS™

QR1-S standard series



## Series QR1

- Ambient temperature 0 ... 60°C
- Operating pressure 0 ... 10 bar
- Cylindrical threads
- Versions for high temperature applications with increased corrosion resistance (QR2-F and QR2-C)
- Optimum sealing, also after repeated release, through captive O-ring
- Due to product optimisation, the delivered article may currently deviate from the dimensions shown.



**QR1-S-RPN standard series**

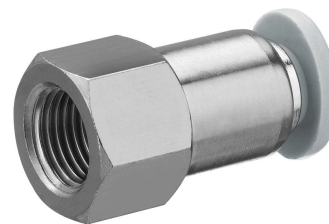
Straight fitting



G	Ø D	Delivery unit [piece]	Part No.
M5	Ø 4	10	2121004050
M5	Ø 6	10	2121006050
G 1/8	Ø 4	10	2121004180
G 1/8	Ø 6	10	2121006180
G 1/8	Ø 8	10	2121008180
G 1/8	Ø 10	10	R412005002
G 1/8	Ø 12	10	R412005003
G 1/4	Ø 4	10	2121004140
G 1/4	Ø 6	10	2121006140
G 1/4	Ø 8	10	2121008140
G 1/4	Ø 10	10	2121010140
G 1/4	Ø 12	10	2121012140
G 3/8	Ø 6	10	R412005000
G 3/8	Ø 8	10	2121008380
G 3/8	Ø 10	10	2121010380
G 3/8	Ø 12	10	2121012380
G 3/8	Ø 14	10	2121014380
G 3/8	Ø 16	10	R412005005
G 1/2	Ø 8	10	R412005001
G 1/2	Ø 10	10	2121010120
G 1/2	Ø 12	10	2121012120
G 1/2	Ø 14	10	2121014120
G 1/2	Ø 16	10	R412005006

**QR1-S-RAI standard series**

Straight female stud fitting



G	Ø D	Delivery unit [piece]	Part No.
G 1/8	Ø 4	10	2121904180
G 1/8	Ø 6	10	2121906180
G 1/8	Ø 8	10	2121908180
G 1/4	Ø 4	10	R412005085
G 1/4	Ø 6	10	2121906140
G 1/4	Ø 8	10	2121908140
G 1/4	Ø 10	10	R412005089
G 1/4	Ø 12	10	R412005091
G 3/8	Ø 6	10	R412005086
G 3/8	Ø 8	10	R412005087
G 3/8	Ø 10	10	2121910380
G 3/8	Ø 12	10	2121912380
G 1/2	Ø 10	10	R412005090
G 1/2	Ø 12	10	2121912120

**QR1-S-RAS standard series**

Push-in connector

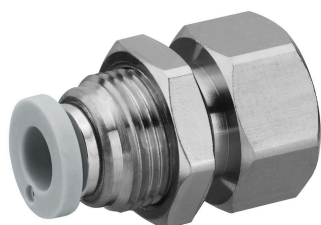


G	Ø D	Delivery unit [piece]	Part No.
M5	Ø 4	10	2121604050
M5	Ø 6	10	R412005068
G 1/8	Ø 4	10	2121604180
G 1/8	Ø 6	10	2121606180
G 1/8	Ø 8	10	R412005071

G	Ø D	Delivery unit [piece]	Part No.
G 1/4	Ø 6	10	2121606140
G 1/4	Ø 8	10	2121608140
G 1/4	Ø 10	10	R412005072
G 1/4	Ø 12	10	R412005073
G 3/8	Ø 10	10	2121610380
G 3/8	Ø 12	10	R412005074
G 1/2	Ø 10	10	2121610120
G 1/2	Ø 12	10	2121612120
G 1/2	Ø 14	5	R412005076
G 1/2	Ø 16	5	R412005078

**QR1-S-RSI standard series**

Bulkhead connector



G	Ø D	Delivery unit [piece]	Part No.
G 1/8	Ø 4	10	2122604180
G 1/8	Ø 6	10	2122606180
G 1/8	Ø 8	10	R412005232
G 1/4	Ø 6	10	2122606140
G 1/4	Ø 8	10	2122608140
G 1/4	Ø 10	10	R412005233
G 3/8	Ø 8	10	R412005231
G 3/8	Ø 10	10	2122610380
G 3/8	Ø 12	10	R412005235
G 1/2	Ø 12	10	2122612120

**QR1-S-RVT standard series**

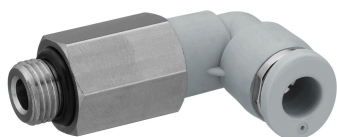
Elbow fitting



G	Ø D	Delivery unit [piece]	Part No.
M5	Ø 4	10	2122004050
M5	Ø 6	10	2122006050
G 1/8	Ø 4	10	2122004180
G 1/8	Ø 6	10	2122006180
G 1/8	Ø 8	10	2122008180
G 1/8	Ø 10	10	R412005094
G 1/8	Ø 12	10	R412005095
G 1/4	Ø 4	10	2122004140
G 1/4	Ø 6	10	2122006140
G 1/4	Ø 8	10	2122008140
G 1/4	Ø 10	10	2122010140
G 1/4	Ø 12	10	2122012140
G 3/8	Ø 6	10	R412005092
G 3/8	Ø 8	10	2122008380
G 3/8	Ø 10	10	2122010380
G 3/8	Ø 12	10	2122012380
G 3/8	Ø 14	5	2122014380
G 3/8	Ø 16	5	R412005097
G 1/2	Ø 8	10	R412005093
G 1/2	Ø 10	10	2122010120
G 1/2	Ø 12	10	2122012120
G 1/2	Ø 14	5	2122014120
G 1/2	Ø 16	5	R412005098

**QR1-S-RVL standard series**

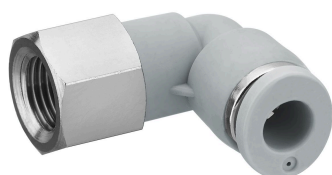
Long elbow fitting



G	Ø D	Delivery unit [piece]	Part No.
M5	Ø 4	10	2122104050
M5	Ø 6	10	R412005099
G 1/8	Ø 4	10	2122104180
G 1/8	Ø 6	10	2122106180
G 1/8	Ø 8	10	2122108180
G 1/4	Ø 4	10	2122104140
G 1/4	Ø 6	10	2122106140
G 1/4	Ø 8	10	2122108140
G 1/4	Ø 10	10	2122110140
G 1/4	Ø 12	10	R412005103
G 3/8	Ø 8	10	2122108380
G 3/8	Ø 10	10	2122110380
G 3/8	Ø 12	10	R412005104
G 1/2	Ø 12	10	R412005105

**QR1-S-RVI standard series**

Elbow screw fitting

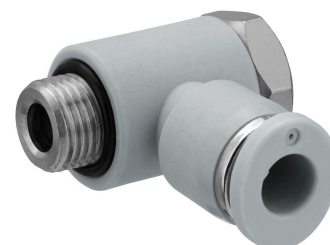


G	Ø D	Delivery unit [piece]	Part No.
G 1/8	Ø 4	10	R412005129
G 1/8	Ø 6	10	R412005130
G 1/8	Ø 8	10	R412005131
G 1/4	Ø 4	10	R412005132
G 1/4	Ø 6	10	R412005133

G	Ø D	Delivery unit [piece]	Part No.
G 1/4	Ø 8	10	R412005134
G 1/4	Ø 10	10	R412005135

**QR1-S-RW1 standard series**

Swivel banjo connection 1-fold



G	Ø D	Delivery unit [piece]	Part No.
M5	Ø 4	10	R412005236
M5	Ø 6	10	R412005238
G 1/8	Ø 4	10	R412005237
G 1/8	Ø 6	10	R412005239
G 1/8	Ø 8	10	R412005240
G 1/4	Ø 6	10	R412005241
G 1/4	Ø 8	10	R412005242
G 1/4	Ø 10	10	R412005243
G 3/8	Ø 8	5	R412005244
G 3/8	Ø 10	5	R412005245
G 3/8	Ø 12	5	R412005246

**QR1-S-RW2 standard series**

Swivel banjo connection 2-fold



G	Ø D	Delivery unit [piece]	Part No.
G 1/8	Ø 4	10	R412005141
G 1/8	Ø 6	10	R412005144
G 1/8	Ø 8	10	R412005147

G	Ø D	Delivery unit [piece]	Part No.
G 1/4	Ø 6	10	R412005145
G 1/4	Ø 8	10	R412005148
G 3/8	Ø 8	10	R412005149
G 3/8	Ø 10	5	R412005152
G 1/2	Ø 12	5	R412005155

**QR1-S-RW6 standard series**

Swivel banjo connection 3-fold, double



G	Ø D	Delivery unit [piece]	Part No.
G 1/8	Ø 4	10	R412005186
G 1/8	Ø 6	10	R412005187
G 1/4	Ø 4	10	R412005189
G 1/4	Ø 6	10	R412005190
G 1/4	Ø 8	10	R412005191
G 3/8	Ø 6	10	R412005194
G 3/8	Ø 8	10	R412005195
G 3/8	Ø 10	5	R412005196

**QR1-S-RID standard series**

Swivel banjo connection 2-fold, with internal thread

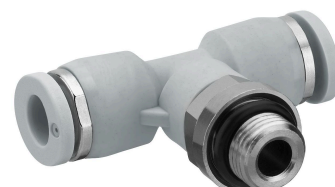


G	Ø D	Ø	Delivery unit [piece]	Part No.
M5	Ø 4	M5	10	R412005259
G 1/8	Ø 6	G 1/8	10	R412005260

G	Ø D	Ø	Delivery unit [piece]	Part No.
G 1/4	Ø 8	G 1/4	10	R412005261
G 3/8	Ø 10	G 3/8	5	R412005262

**QR1-S-RTT standard series**

T-union



G	Ø D	Delivery unit [piece]	Part No.
M5	Ø 4	10	2122204050
M5	Ø 6	10	R412005201
G 1/8	Ø 4	10	2122204180
G 1/8	Ø 6	10	2122206180
G 1/8	Ø 8	10	2122208180
G 1/8	Ø 10	10	R412005205
G 1/4	Ø 4	10	2122204140
G 1/4	Ø 6	10	2122206140
G 1/4	Ø 8	10	2122208140
G 1/4	Ø 10	10	2122210140
G 1/4	Ø 12	10	R412005206
G 3/8	Ø 6	10	R412005203
G 3/8	Ø 8	10	2122208380
G 3/8	Ø 10	10	2122210380
G 3/8	Ø 12	10	2122212380
G 3/8	Ø 14	10	2122214380
G 1/2	Ø 10	10	2122210120
G 1/2	Ø 12	5	2122212120
G 1/2	Ø 14	5	2122214120
G 1/2	Ø 16	5	R412005209

**QR1-S-RTS standard series**

T-Banjo connection

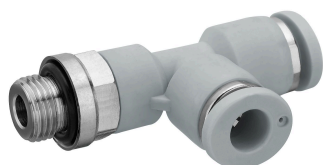


G	Ø D	Delivery unit [piece]	Part No.
G 1/2	Ø 12	5	2122312120

G	Ø D	Delivery unit [piece]	Part No.
G 1/8	Ø 6	10	R412005292
G 1/8	Ø 8	10	R412005293
G 1/4	Ø 6	10	R412005294
G 1/4	Ø 8	10	R412005295

**QR1-S-RLT standard series**

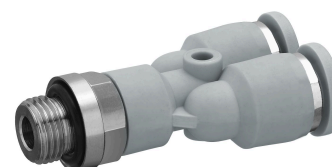
Elbow fitting



G	Ø D	Delivery unit [piece]	Part No.
M5	Ø 4	10	2122304050
M5	Ø 6	10	R412005212
G 1/8	Ø 4	10	2122304180
G 1/8	Ø 6	10	2122306180
G 1/8	Ø 8	10	R412005214
G 1/4	Ø 4	10	R412005211
G 1/4	Ø 6	10	2122306140
G 1/4	Ø 8	10	2122308140
G 1/4	Ø 10	10	R412005215
G 1/4	Ø 12	5	R412005216
G 3/8	Ø 8	10	2122308380
G 3/8	Ø 10	10	2122310380
G 3/8	Ø 12	5	2122312380
G 1/2	Ø 10	10	2122310120

**QR1-S-RAY standard series**

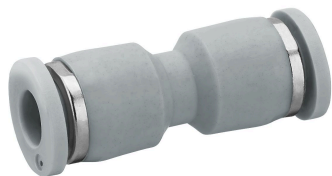
Y-fitting



G	Ø D	Delivery unit [piece]	Part No.
M5	Ø 4	10	2122404050
M5	Ø 6	10	R412005219
G 1/8	Ø 4	10	2122404180
G 1/8	Ø 6	10	2122406180
G 1/8	Ø 8	10	2122408180
G 1/4	Ø 4	10	2122404140
G 1/4	Ø 6	10	2122406140
G 1/4	Ø 8	10	2122408140
G 1/4	Ø 10	10	2122410140
G 3/8	Ø 8	10	R412005221
G 3/8	Ø 10	10	2122410380
G 3/8	Ø 12	10	2122412380
G 1/2	Ø 8	10	R412005222
G 1/2	Ø 10	10	2122410120
G 1/2	Ø 12	10	2122412120

**QR1-S-RSK standard series**

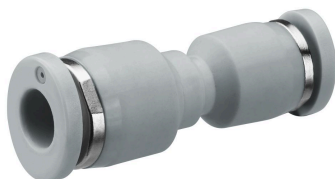
Straight plug connector



G	Ø D	Delivery unit [piece]	Part No.
Ø 4	Ø 4	10	2121504000
Ø 6	Ø 6	10	2121506000
Ø 8	Ø 8	10	2121508000
Ø 10	Ø 10	10	2121510000
Ø 12	Ø 12	10	2121512000
Ø 14	Ø 14	5	2121514000
Ø 16	Ø 16	5	R412005059

**QR1-S-RSR standard series**

Straight plug connector, reducing



G	Ø D	Delivery unit [piece]	Part No.
Ø 6	Ø 4	10	R412005060
Ø 8	Ø 4	10	R412005061
Ø 8	Ø 6	10	R412005062
Ø 10	Ø 6	10	R412005063
Ø 10	Ø 8	10	R412005064
Ø 12	Ø 8	10	R412005065
Ø 12	Ø 10	10	R412005066
Ø 16	Ø 12	5	R412005067

**QR1-S-RSM standard series**

Bulkhead push-in fitting, metal



G	Ø D	Delivery unit [piece]	Part No.
Ø 4	Ø 4	10	2121404000
Ø 6	Ø 6	10	2121406000
Ø 8	Ø 8	10	2121408000
Ø 10	Ø 10	10	2121410000
Ø 12	Ø 12	10	2121412000

**QR1-S-RSC standard series**

Bulkhead plug connector, plastic



G	Ø D	Delivery unit [piece]	Part No.
Ø 4	Ø 4	10	R412005051
Ø 6	Ø 6	10	R412005052
Ø 8	Ø 8	10	R412005053
Ø 10	Ø 10	10	R412005054
Ø 12	Ø 12	10	R412005055



**QR1-S-RVK standard series**

Angled plug connector



G	Ø D	Delivery unit [piece]	Part No.
Ø 4	Ø 4	10	2121204000
Ø 6	Ø 6	10	2121206000
Ø 8	Ø 8	10	2121208000
Ø 10	Ø 10	10	2121210000
Ø 12	Ø 12	10	2121212000
Ø 14	Ø 14	5	2121214000
Ø 16	Ø 16	5	R412005033

**QR1-S-RVS standard series**

Angled bulkhead connector



G	Ø D	Delivery unit [piece]	Part No.
Ø 4	Ø 4	10	R412005056
Ø 6	Ø 6	10	R412005057
Ø 8	Ø 8	10	R412005375
Ø 10	Ø 10	10	R412005376

**QR1-S-RMT standard series**

Plug connector, 3x, reducing



G	Ø D	Delivery unit [piece]	Part No.
Ø 6	Ø 4	10	R412005346
Ø 8	Ø 4	10	R412005347
Ø 8	Ø 6	10	R412005348
Ø 10	Ø 6	10	R412005349
Ø 10	Ø 8	10	R412005350

**QR1-S-RTK standard series**

T-plug connector



G	Ø D	Delivery unit [piece]	Part No.
Ø 4	Ø 4	10	2121104000
Ø 6	Ø 6	10	2121106000
Ø 8	Ø 8	10	2121108000
Ø 10	Ø 10	10	2121110000
Ø 12	Ø 12	10	2121112000
Ø 14	Ø 14	5	2121114000
Ø 16	Ø 16	5	R412005025

**QR1-S-RTR standard series**

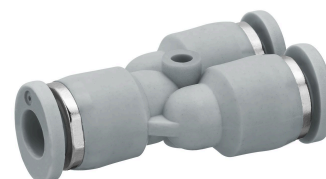
T-plug connector, reducing



G	Ø D	Delivery unit [piece]	Part No.
Ø 6	Ø 4	10	R412005026
Ø 8	Ø 4	10	R412005027
Ø 8	Ø 6	10	R412005028
Ø 10	Ø 6	10	R412005029
Ø 10	M8	10	R412005030
Ø 12	Ø 8	10	R412005031
Ø 12	Ø 10	10	R412005032

**QR1-S-RYR standard series**

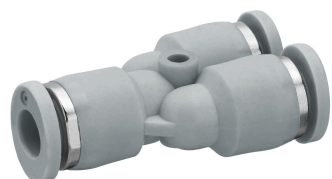
Y-Plug connector, reducing



G	Ø D	Delivery unit [piece]	Part No.
Ø 6	Ø 4	10	2121806040
Ø 8	Ø 4	10	R412005081
Ø 8	Ø 6	10	2121808060
Ø 10	Ø 6	10	R412005082
Ø 10	Ø 8	10	2121810080
Ø 12	Ø 8	10	R412005083
Ø 12	Ø 10	10	R412005080

**QR1-S-RYK standard series**

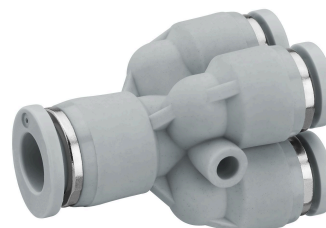
Y - Plug connection



G	Ø D	Delivery unit [piece]	Part No.
Ø 4	Ø 4	10	2121804000
Ø 6	Ø 6	10	2121806000
Ø 8	Ø 8	10	2121808000
Ø 10	Ø 10	10	2121810000
Ø 12	Ø 12	10	2121812000

**QR1-S-RYD standard series**

Y-Plug connector, reducing double



G	Ø D	Delivery unit [piece]	Part No.
Ø 6	Ø 4	10	R412005344
Ø 8	Ø 6	10	R412005345

**QR1-S-RXS standard series**

X-Plug connection



G	Ø D	Delivery unit [piece]	Part No.
Ø 4	Ø 4	10	R412005361
Ø 6	Ø 6	10	R412005362
Ø 8	Ø 8	10	R412005363
Ø 10	Ø 10	10	R412005364

**QR1-S-RVA standard series**

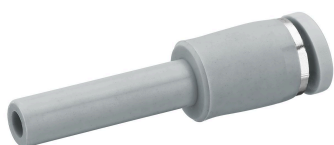
Angled plug-in connector



G	Ø D	Delivery unit [piece]	Part No.
Ø 4	Ø 4	10	2121304040
Ø 6	Ø 6	10	2121306060
Ø 8	Ø 8	10	2121308080
Ø 10	Ø 10	10	2121310100
Ø 12	Ø 12	10	R412005036

**QR1-S-RED standard series**

Straight push-in fitting, reducing



G	Ø D	Delivery unit [piece]	Part No.
Ø 4	Ø 6	10	2121706040
Ø 4	Ø 8	10	2121708040
Ø 4	Ø 10	10	2121710040
Ø 6	Ø 8	10	2121708060
Ø 6	Ø 10	10	2121710060
Ø 6	Ø 12	10	2121712060
Ø 8	Ø 10	10	2121710080
Ø 8	Ø 12	10	2121712080
Ø 8	Ø 14	10	2121714080
Ø 10	Ø 12	10	2121712100
Ø 10	Ø 14	10	2121714100
Ø 12	Ø 14	10	2121714120

**QR1-S-RLL standard series**

Angled plug-in connector



G	Ø D	Delivery unit [piece]	Part No.
Ø 4	Ø 4	10	R412005039
Ø 6	Ø 6	10	R412005040
Ø 8	Ø 8	10	R412005041
Ø 10	Ø 10	10	R412005042
Ø 12	Ø 12	10	R412005043

**QR1-S-RVR standard series**

Angled plug-in connector

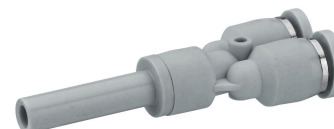


G	Ø D	Delivery unit [piece]	Part No.
Ø 6	Ø 6	10	R412005333
Ø 8	Ø 8	10	R412005334
Ø 10	Ø 10	10	R412005335
Ø 12	Ø 12	10	R412005336

G	Ø D	Delivery unit [piece]	Part No.
Ø 4	Ø 6	10	2121304060
Ø 6	Ø 8	10	2121306080
Ø 8	Ø 10	10	R412005034

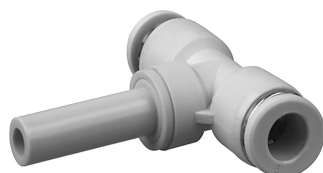
**QR1-S-R2R standard series**

Y-Push-in fitting, reducing



**QR1-S-RTC standard series**

T-push-in fitting

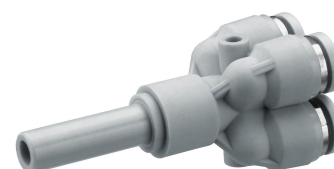


G	Ø D	Delivery unit [piece]	Part No.
Ø 4	Ø 6	10	R412005337
Ø 6	Ø 8	10	R412005338
Ø 8	Ø 10	10	R412005339
Ø 10	Ø 12	10	R412005340

G	Ø D	Delivery unit [piece]	Part No.
Ø 6	Ø 6	10	2122706000
Ø 8	Ø 8	10	2122708000
Ø 12	Ø 12	10	R412010596

**QR1-S-RY4 standard series**

Y-Push-in fitting, reducing



**QR1-S-RY2 standard series**

Y - Push-in fitting



G	Ø D	Delivery unit [piece]	Part No.
Ø 4	Ø 6	10	R412005341
Ø 4	Ø 8	10	R412005342

G	Ø D	Delivery unit [piece]	Part No.
Ø 4	Ø 4	10	R412005332

**QR1-S-RCA standard series**

Sealing cap



G	Delivery unit [piece]	Part No.
Ø 4	20	R412005111
Ø 6	20	R412005112
Ø 8	20	R412005113
Ø 10	20	R412005114
Ø 12	20	R412005115

**QR1-S-RDS standard series**

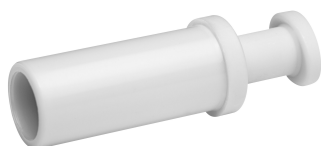
Connection piece



G	Ø D	Delivery unit [piece]	Part No.
Ø 4	Ø 4	10	2123104000
Ø 6	Ø 6	10	2123106000
Ø 8	Ø 8	10	2123108000
Ø 10	Ø 10	10	2123110000
Ø 12	Ø 12	10	2123112000

**QR1-S-RBS standard series**

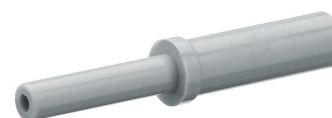
Blanking plug



G	Delivery unit [piece]	Part No.
Ø 4	20	2123204000
Ø 6	20	2123206000
Ø 8	20	2123208000
Ø 10	20	2123210000
Ø 12	20	2123212000
Ø 14	10	2123214000
Ø 16	10	R412005331

**QR1-S-RDR standard series**

Connection pieces, reducing



G	Ø D	Delivery unit [piece]	Part No.
Ø 6	Ø 4	10	R412005323
Ø 8	Ø 4	10	R412005324
Ø 8	Ø 6	10	R412005325
Ø 10	Ø 6	10	R412005326
Ø 10	Ø 8	10	R412005327
Ø 12	Ø 8	10	R412005328
Ø 12	Ø 10	10	R412005329

# Efficient pneumatic solutions, our program: cylinders and drives, valves and valve systems, air supply management



Visit us: [Emerson.com/Aventics](https://www.emerson.com/Aventics)

Your local contact: [Emerson.com/contactus](https://www.emerson.com/contactus)



[Emerson.com](https://www.emerson.com)



[Facebook.com/EmersonAutomationSolutions](https://www.facebook.com/EmersonAutomationSolutions)



[LinkedIn.com/company/Emerson-Automation-Solutions](https://www.linkedin.com/company/Emerson-Automation-Solutions)



[Twitter.com/EMR\\_Automation](https://twitter.com/EMR_Automation)

An example configuration is depicted on the title page. The delivered product may thus vary from that in the illustration. Subject to change. This Document, as well as the data, specifications and other information set forth in it, are the exclusive property of AVENTICS GmbH. It may not be reproduced or given to third parties without its consent. Only use the AVENTICS products shown in industrial applications. Read the product documentation completely and carefully before using the product. Observe the applicable regulations and laws of the respective country. When integrating the product into applications, note the system manufacturer's specifications for safe use of the product. The data specified only serve to describe the product. No statements concerning a certain condition or suitability for a certain application can be derived from our information. The information given does not release the user from the obligation of own judgment and verification. It must be remembered that the products are subject to a natural process of wear and aging.

The Emerson logo is a trademark and service mark of Emerson Electric Co. Brand logotype are registered trademarks of one of the Emerson family of companies. All other marks are the property of their respective owners. © 2019 Emerson Electric Co. All rights reserved.



**CONSIDER IT SOLVED™**