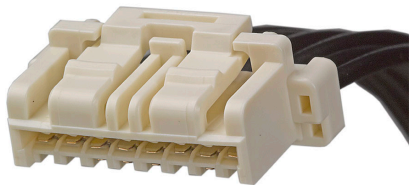




Part Number : [151350802](#)
Product Description : CLIK-Mate-to-CLIK-Mate
Off-the-Shelf (OTS) Cable Assembly, 1.50mm
Pitch, Single Row, 150.00mm Length, 8
Circuits, Beige
Series Number : 15135
Status : Active
Product Category : Power and Signal Cable
Assemblies




Documents & Resources

Drawings
[151350802_sd.pdf](#)

Product Environment Compliance

Compliance

GADSL/IMDS	Compliant with Exemption 44; 47; 34; 33
China RoHS	
EU ELV	Not Relevant
Low-Halogen Status	Not Low-Halogen per IEC 61249-2- 21
REACH SVHC	Not Contained per D(2024)6225-DC (07 Nov 2024)
EU RoHS	Compliant per EU 2015/863

Multiple Part Product Compliance Statements

- Eu RoHS
- REACH SVHC
- Low-Halogen

Multiple Part Industry Compliance Documents

- IPC 1752A Class C
- IPC 1752A Class D
- Molex Product Compliance Declaration
- IEC-62474
- chemSHERPA (xml)

Part Details

General

Status	Active
Category	Power and Signal Cable Assemblies
Series	15135
Description	CLIK-Mate-to-CLIK-Mate Off-the-Shelf (OTS) Cable Assembly, 1.50mm Pitch, Single Row, 150.00mm Length, 8 Circuits, Beige
Application	Signal, Wire-to-Board
Assembly Configuration	Dual Ended Connectors
Connector to Connector	CLIK-Mate-to-CLIK-Mate
Product Name	CLIK-Mate
Type	Discrete Wire Assembly
UPC	191128160445

Electrical

Current - Maximum per Contact	2.0A
Voltage - Maximum	100V AC (RMS)/DC

Physical

Cable Length	150.00mm
Circuits (Loaded)	8
Circuits (maximum)	8
Color - Resin	Beige
Gender	Male-Male
Lock to Mating Part	Yes
Material - Metal	Copper Alloy
Material - Plating Mating	Tin
Material - Plating Termination	Tin
Material - Resin	PBT
Net Weight	5.009/g
Number of Rows	1
Overmolded	No

Packaging Type	Bag
Pitch - Mating Interface	1.50mm
Plating min - Mating	0.406µm
Plating min - Termination	0.406µm
Single Ended	No
Termination Interface Style	Crimp or Compression
Wire/Cable Type	UL 1061
Wire Size (AWG)	24

Mates With / Use With

Mates with Part(s)

Description	Part Number
1.50mm Pitch CLIK-Mate Bottom Entry Single Row PCB Receptacles	<u>503395</u>
1.50mm Pitch CLIK-Mate Right-Angle Single Row PCB Receptacles	<u>503175</u>
1.50mm Pitch CLIK-Mate Right-Angle Single Row PCB Receptacles	<u>502585</u>
1.50mm Pitch CLIK-Mate Vertical Single Row PCB Receptacles	<u>503159</u>
1.50mm Pitch CLIK-Mate Vertical Single Row PCB Receptacles	<u>502584</u>