



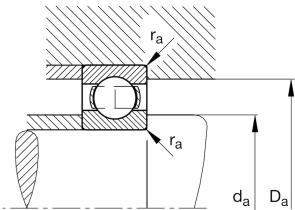
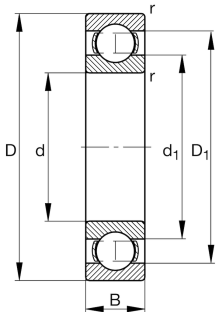
FAG

16038

Deep groove ball bearing

Deep groove ball bearing 160, single row,  
steel sheet metal cage

Technical information



Your current product variant

Sealing	Without	Not sealed
Cage	JN	Steel sheet metal
Tolerance class	PN	Normal (PN)
Dimensional / heat stabilization	S1	Rings dimensional stabilized up to 200°
Lubricant	Without	Bearing not greased
Radial internal clearance	CN (Group N)	Normal internal clearance
Bore type	Z	Cylindrical

Main Dimensions & Performance Data

d	190 mm	Bore diameter
D	290 mm	Outside diameter
B	31 mm	Width
C <sub>r</sub>	158,000 N	Basic dynamic load rating, radial
C <sub>0r</sub>	168,000 N	Basic static load rating, radial
C <sub>ur</sub>	6,400 N	Fatigue load limit, radial
n <sub>G</sub>	3,100 1/min	Limiting speed
n <sub>gr</sub>	2,650 1/min	Reference speed
≈m	7.04 kg	Weight



Mounting dimensions

$d_{a\min}$	198.8 mm	Minimum diameter shaft shoulder
$D_{a\max}$	281.2 mm	Maximum diameter of housing shoulder
$r_{a\max}$	2 mm	Maximum fillet radius

Dimensions

$r_{\min}$	2 mm	Minimum chamfer dimension
$D_1$	255.15 mm	Shoulder diameter outer ring
$d_1$	225.74 mm	Shoulder diameter inner ring

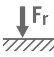
Temperature range

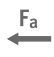
$T_{\min}$	-30 °C	Operating temperature min.
$T_{\max}$	200 °C	Operating temperature max.


Calculation factors


$f_0$	16.5	Calculation factor
-------	------	--------------------


Characteristics


- 

Radial load
- 

Axial load in one direction
- 

Axial load in two directions
- 

Grease Lubrication
- 

Oil Lubrication
- 

Not sealed