

## Cable socket, self-assembly

### Product features

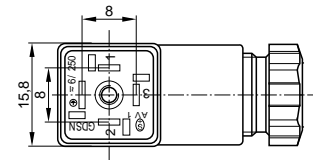
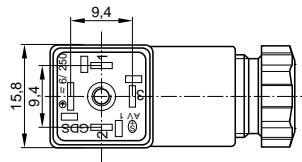
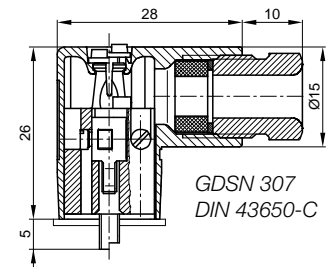
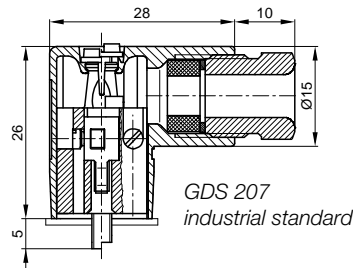
- for miniature valves, for example electro-magnetic pneumatic valves

### Variations

- contact arrangement according to DIN 43650-C (contact distance 8 mm)
- contact arrangement according to industrial standard (contact distance 9.4 mm)

### Further information

see technical data in the catalog  
Rectangular connectors for automation technique  
DS 280 490-440.



standard	poles	type	locking screw	type or connection	color	approvals	order no.
industrial standard (9,4 mm)	2+ ⊕	GDS 207	PG 7	screws	black		933 138-100
	3+ ⊕	GDS 307	PG 7	screws	grey		933 138-106
DIN 43650 C	2+ ⊕	GDSN 207	PG 7	screws	black		933 024-100
	3+ ⊕	GDSN 207	PG 7	screws	grey		933 024-106
	2+ ⊕	GDSN 307	PG 7	screws	black		933 137-100
	3+ ⊕	GDSN 307	PG 7	screws	grey		933 137-106
					black		933 023-100
					grey		933 023-106

## Molded cable socket



### Product description

preassembled and molded-on cable socket without integrated electronic circuitry

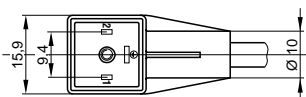
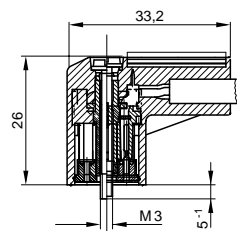
### Variations

- PVC grey (additional colors, cable material, length... on application)
- 0° and 180° cable outlet
- connected protective earth (PE) allows 0° and 180° assembly

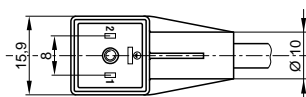
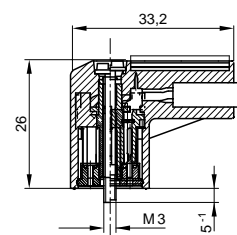
### Further information

see technical data in the catalog  
Rectangular connectors for automation technique  
DS 280 490-440.

**For tailor-made systems,** see page 24



GDS-K 2000  
industrial standard



GDSN-K 2000  
DIN 43650-C

poles	type	length	operating voltage	description	color	order no.
2+ ⊕ industrial standard (9,4 mm)	GDS-K 2000	2m	UC 250 V	central screw M3	black	933 194-111
		5m			grey	933 194-611
	GDS-K 2000 Z	2m	UC 250 V	central screw M3 180° cable outlet	black	933 194-112
		5m			grey	933 194-612
		2m	UC 250 V	central screw M3 180° cable outlet	black	933 197-111
		5m			grey	933 197-611
3+ ⊕	GDS-K 3000	2m	UC 250 V	central screw M3	black	933 197-112
		5m			grey	933 197-612
	GDS-K 3000 Z	2m	UC 250 V	central screw M3 180° cable outlet	black	933 198-111
		5m			grey	933 198-611
		2m	UC 250 V	central screw M3 180° cable outlet	black	933 198-112
		5m			grey	933 198-612
2+ ⊕ DIN 43650 C	GDSN-K 2000	2m	UC 250 V	central screw M 2,5	black	933 198-111
		5m			grey	933 198-611
	GDSN-K 2000 Z	2 m	UC 250 V	central screw M 2,5 180° cable outlet	black	933 178-111
		5 m			grey	933 178-611
		2 m	UC 250 V	central screw M 2,5 180° cable outlet	black	933 178-112
		5 m			grey	933 178-612
3+ ⊕	GDSN-K 2000PE 2	2 m	UC 250 V	central screw M 2,5 connected PE allows 0° or 180° cable outlet	black	933 181-111
		5 m			grey	933 181-611
	GDSN-K 3000	2 m	UC 250 V	central screw M 2,5	black	933 181-112
		5 m			grey	933 181-612
		2 m	UC 250 V	central screw M 2,5	black	933 935-111
		5 m			grey	933 935-611
GDSN-K 3000 Z	2 m	UC 250 V	central screw M 2,5 180° cable outlet	black	933 935-112	
	5 m			grey	933 935-612	
	2 m	UC 250 V	central screw M 2,5 180° cable outlet	black	933 182-111	
	5 m			grey	933 182-611	
				black	933 182-112	
				grey	933 182-612	
				black	933 185-111	
				grey	933 185-611	
				black	933 185-112	
				grey	933 185-612	

## Molded cable socket, with electronic insert

### Product description

preassembled and molded-on cable socket with integrated electronic circuitry and/or LED display

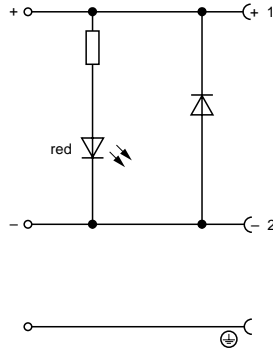
### Variations

- PVC grey (additional colors, cable material, length... on application)
- 0° and 180° cable outlet

### Further information

see technical data in the catalog  
Rectangular connectors for automation technique DS 280 490-440.

**For tailor-made systems,**  
see page 24



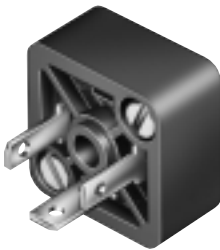
GDSL-K 2000 LED 24 HH  
GDSNL-K 2000 LED 24 HH



poles	type	length	color	operating voltage	description	LED-color	order no.	
2+ ⊕ industrial standard (9,4 mm)	GDSL-K 2000 LED 24 HH	2m	black grey	DC 24 V	function indicator with protective circuit	red	933 202-111	
		5m	black grey			red	933 202-611	
	GDSL-K 2000 Z LED 24 HH	2m	black grey	DC 24 V	function indicator with protective circuit	red	933 202-112	
			black grey			red	933 202-612	
		5m	black grey	DC 24 V	function indicator with protective circuit 180° outlet	red	933 205-111	
			black grey			red	933 205-611	
	GDSL-K 2000 LED 24 GB1 ZZ	2 m	black grey	UC 24 V	LED-rectifier with Z-diode and function indicator	red	933 205-112	
			black grey			red	933 205-612	
		5 m	black grey	UC 24 V	LED-rectifier with Z-diode and function indicator	yellow	933 206-111	
			black grey			yellow	933 206-611	
		GDSL-K 2000 Z LED 24 GB1 ZZ	2 m	black grey	UC 24 V	LED-rectifier with Z-diode and function indicator	yellow	933 206-112
				black grey			yellow	933 206-612
2+ ⊕ DIN 43650 C	GDSL-K 2000 LED 24 HH	2 m	black grey	DC 24 V	function indicator with protective circuit	yellow	933 209-111	
		5 m	black grey			yellow	933 209-611	
	GDSL-K 2000 Z LED 24 HH	2 m	black grey	DC 24 V	function indicator with protective circuit	yellow	933 209-112	
			black grey			yellow	933 209-612	
		5 m	black grey	DC 24 V	function indicator with protective circuit 180° outlet	red	933 209-111	
			black grey			red	933 209-611	
	GDSL-K 2000 LED 24	2 m	black grey	DC 24 V	function indicator with protective circuit	red	933 186-111	
			black grey			red	933 186-611	
		5 m	black grey	DC 24 V	function indicator with protective circuit	red	933 186-112	
			black grey			red	933 186-612	
		GDSL-K 2000 Z LED 24 HH	2 m	black grey	DC 24 V	function indicator with protective circuit	red	933 189-111
				black grey			red	933 189-611
	GDSL-K 2000 LED 24	2 m	black grey	DC 24 V	function indicator with protective circuit 180° outlet	red	933 189-112	
			black grey			red	933 189-612	
		5 m	black grey	DC 24 V	function indicator with protective circuit 180° outlet	red	933 189-111	
			black grey			red	933 189-611	
	GDSL-K 2000 LED 24	2 m	black grey	UC 24 V	function indicator with freewheeling diode	red	933 936-111	
			black grey			red	933 936-611	
5 m		black grey	UC 24 V	function indicator with freewheeling diode	red	933 936-112		
		black grey			red	933 936-612		
GDSL-K 2000 Z LED 24		2 m	black grey	UC 24 V	function indicator with freewheeling diode	red	933 936-111	
			black grey			red	933 936-611	
5 m	black grey	UC 24 V	function indicator with freewheeling diode 180° outlet	red	933 938-111			
	black grey			red	933 938-611			

## Molded cable socket, with with electronic insert (continuation)

poles	type	length	color	operating voltage	description	LED-color	order no.
2+ ⊕ DIN 43650 C	GDSNL-K 2000 LED 24 GB1 ZZ	2 m	black	UC 24 V	LED-rectifier with Z-diode and function indicator	yellow	933 190-111
		5 m	grey			yellow	933 190-611
		5 m	black			yellow	933 190-112
	GDSNL-K 2000 Z LED 24 GB1 ZZ	2 m	grey	UC 24 V	LED-rectifier with Z-diode and function indicator	yellow	933 190-612
		5 m	black			yellow	933 193-111
		5 m	grey			yellow	933 193-611
GDSNL-K 2000 LED 48	2 m	black	UC 48 V	LED-rectifier with 180° cable outlet function indicator with freewheeling diode	yellow	933 193-112	
		grey			red	933 193-612	
		black			red	933 937-111	
		5 m	grey			red	933 937-611
		5 m	black			red	933 937-112
		5 m	grey			red	933 937-612



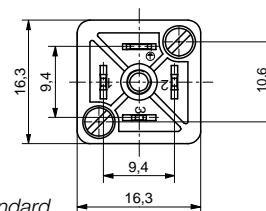
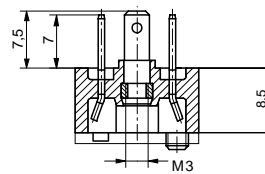
## Appliance connector

### Product description

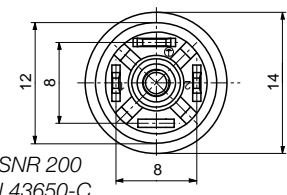
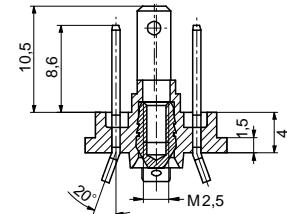
appliance connector for screw-down and for encapsulation

### Further information

see technical data in the catalog  
Rectangular connectors  
for automation technique  
DS 280 490-440.



GSSA 300  
Industrial standard



GSSNR 200  
DIN 43650-C

poles	type	description	approvals	order no.
2+ ⊕ industrial standard (9,4 mm) DIN 43650 C	GSSA 200	central nut and 2 screws		933 117-100
	GSSR 200	central nut, for moulding or sealing		933 115-100
	GSSNA 200	central nut and 2 screws		933 110-100
	GSSNR 200	central nut, for moulding or sealing		933 113-100
3+ ⊕ industrial standard (9,4 mm) DIN 43650 C	GSSA 300	central nut with 2 screws		933 116-100
	GSSR 300	central nut, for moulding or sealing		933 114-100
	GSSNA 300	central nut with 2 screws		933 111-100
	GSSNR 300	central nut, for moulding or sealing		933 112-100



## Accessories

### Product description

flat gaskets

### Variations

For applications where silicon cannot be used, Hirschmann offers alternative materials which have no restrictive effect on the temperature range.

### Further information

see technical data in the catalog  
Rectangular connectors  
for automation technique  
DS 280 490-440.



accessories	type	description	order no.	contact arrangement
cable socket	GDS 307-2	flat gasket NBR	730 185-002	industrial standard
	GDS 307-4	flat gasket ECO	730 314-002	industrial standard
	GDSN 307-4	flat gasket NBR	730 176-002	DIN 43650 C
appliance connector	GDSN 307-5	flat gasket ECO	730 310-002	DIN 43650 C
	GSSA 300-5	flat gasket NBR	730 233-002	industrial standard
	GSSA 300-6	flat gasket ECO	730 312-002	industrial standard
	GSSNA 300-5	flat gasket NBR	730 232-002	DIN 43650 C
	GSSNA 300-6	flat gasket ECO	730 365-002	DIN 43650 C

## Crimp method

### Product features

- crimping contacts
- crimping tool
- ejection tool

### Further information

see technical data in the catalog  
Rectangular connectors  
for automation technique  
DS 280 490-440.



	type	description	order no.
contacts 0,5-1,5 mm copper alloy tin-plated	RBC 630	folded engaging crimp contact BO crimp	732 425-022
	RBCB 630	folded engaging crimp contact BO crimp, coiled	732 384-001
tools	RMC 480	flat crimping contact B crimp	731 470-021
	XZC 0700	manual crimpint tool for B and O crimp with 3 profiles	932 507-001
	XWA 630	ejector tool for folded crimp contacts	931 996-001