



Brand of NTN Group

Technical data

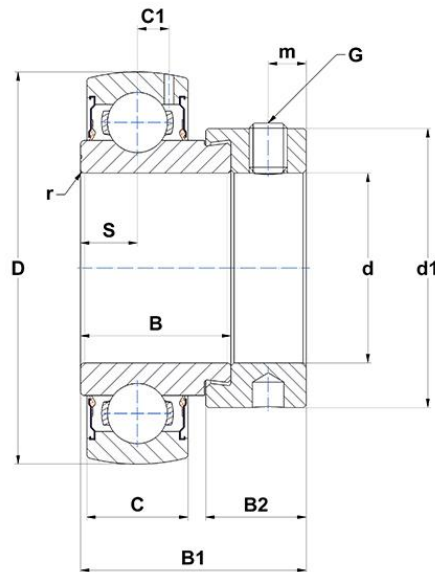
SES210

Insert bearings



Stainless steel insert, spherical outer diameter, fixing by eccentric locking collar, single lip seal, food grease

VISUAL (S)



PRODUCT DEFINITION

Brand	SNR
B - Width of Inner Ring	30,2 mm
B1 - Overall width Inner Ring	43,7 mm
B2 - Width of eccentric locking collar/nut	18,3 mm
C - Width of Outer Ring	20 mm
C1 - Distance center of OR to center of lubrication zone	6,5 mm
d - Shaft diameter	50 mm
d1 - Outer dia of eccent. Lock. collar / nut of adapter sleeve	69,9 mm



NTN Europe

1 rue des Usines · BP 2017 · 74010 Annecy Cedex · France · Tel. +33 (0)4 50 65 30 00
 S.A. au capital de 322 639 919 € · RCS ANNECY B 325 821 072 · Id. Fiscale : FR 48 325 821 072
 SIRET 325 821 072 00015 · Code APE 2815 Z · Code NACE 28.15

PRODUCT DEFINITION

D - Outer diameter of OR	90 mm
G - Set screw size	M8x1
m - Distance to set screw	6,5 mm
r - Radius Inner Ring	1
S - Distance front side/bearing centre	10 mm
f0 - Factor	14.4
SW - Wrench size	4 mm

PRODUCT PERFORMANCE

C - Dynamic load rating	35000000 mN
C0 - Static load rating	23100000 mN
Operating temperature min.	253,15 °K
Operating temperature max.	373,15 °K

OTHER FEATURES

Mass	0,75 kg
Recommended tightening torque for set screw	8.3 N-m

BEARING FREQUENCIES

BPFO - Over rolling frequency on outer ring (60 rpm)	4.093 Hz
BPFI - Over rolling frequency on inner (60 rpm)	5.907 Hz
BSF - Over rolling frequency on rolling element (60 rpm)	5.33 Hz
BRF - Rotational frequency - rolling element (60 rpm)	2.665 Hz
FTF - Rotational frequency - cage (60 rpm)	0.409 Hz

