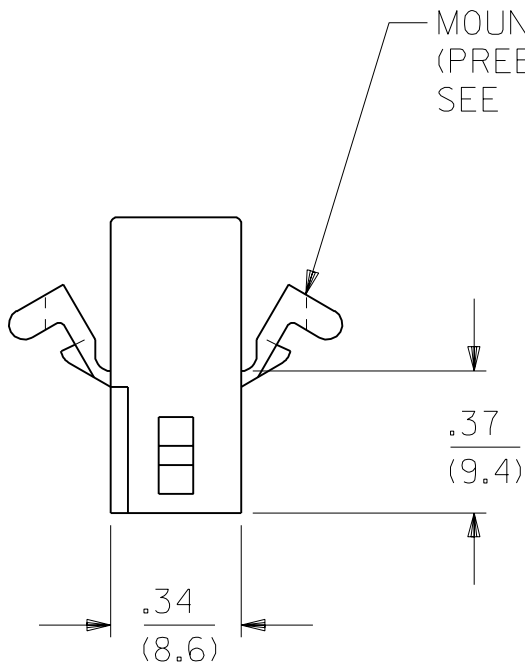
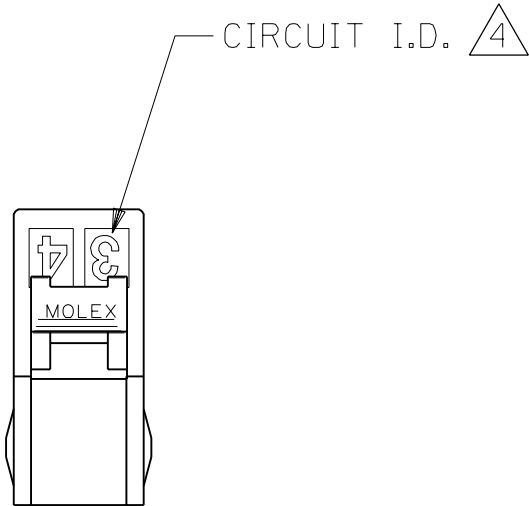
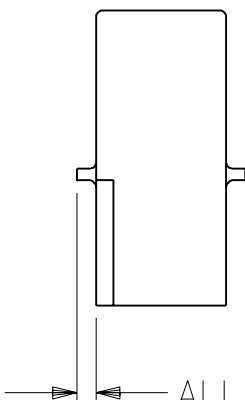
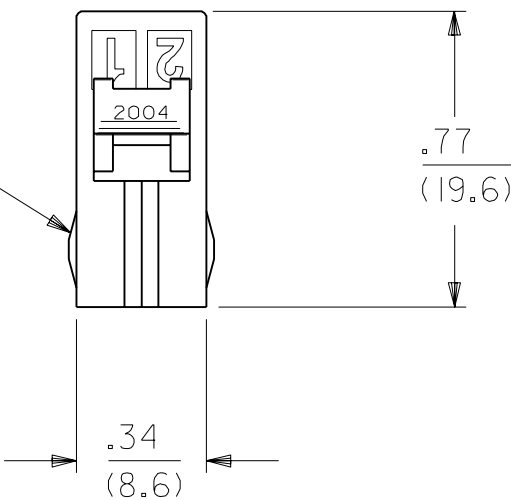


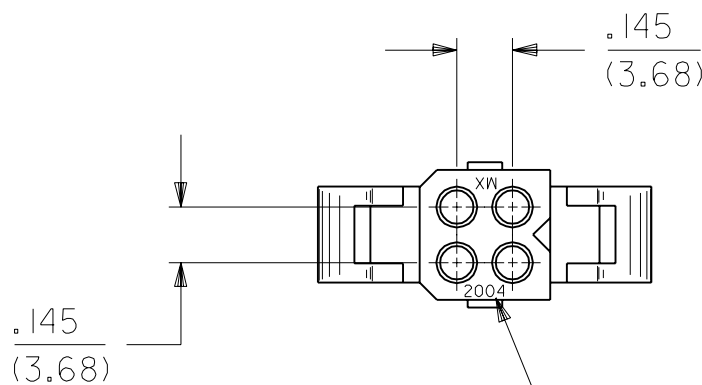
DETAIL 1
POSITIVE LOCK VERSION
ENG. NO. 2004-R5*



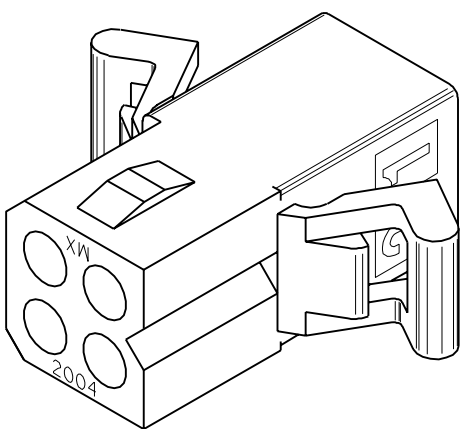
PASSIVE LOCK
VERSION



ALLOWANCE OF $\frac{.000}{.060}$ (2 PL.) FOR CUT OFF OF MOUNTING EARS
 $\frac{.000}{.060}$ (0.00/1.52)
DETAIL 2
RECEPTACLE WITHOUT EARS
OR DETENTS, ENG. NO. 2004-R3*

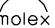


ENG. NO. LOCATION
FOR PARTS W/O MTG. EARS



RECEPTACLE HOUSING

DIMENSIONS SHOWN (METRIC) INCH		
UNLESS OTHERWISE SPECIFIED TOLERANCES: ANGULAR $\pm 10^\circ$		
	INCH	METRIC
3 PLACE	$\pm .010$	---
2 PLACE	$\pm .014$	± 0.25
1 PLACE	---	± 0.36
DRAFT WHERE APPLICABLE MUST REMAIN WITHIN DIMENSIONS		
DRWG. BY	GWC	
CHK'D. BY	RW	
APP'D. BY	RS	
SCALE	4" = 1"	

$\nabla = 0$		$\blacktriangledown = 0$		REVISE ONLY ON CAD SYSTEM			
TITLE							
PLUG AND RECEPTACLE HOUSINGS, 4 CIRCUIT .062/(1.57) DIA.							
 MOLEX INCORPORATED		SHEET NO.		DATE			
LISLE, ILL. 60532 U.S.A.		2		8/27/91			
PART NO.		DRWG. NO.					
SEE CHART		SD-2004-*					
FILE NAME H2004C4		THIS DRAWING CONTAINS INFORMATION THAT IS PROPRIETARY TO MOLEX INC. AND SHOULD NOT BE USED WITHOUT WRITTEN PERMISSION.				DIV. CP	
						SIZE C	

LTR.	REVISIONS	LTR.	REVISIONS
		I	SEE SHEET I

[illegible]