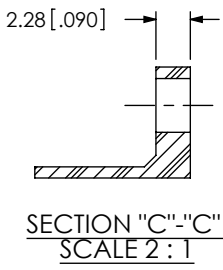
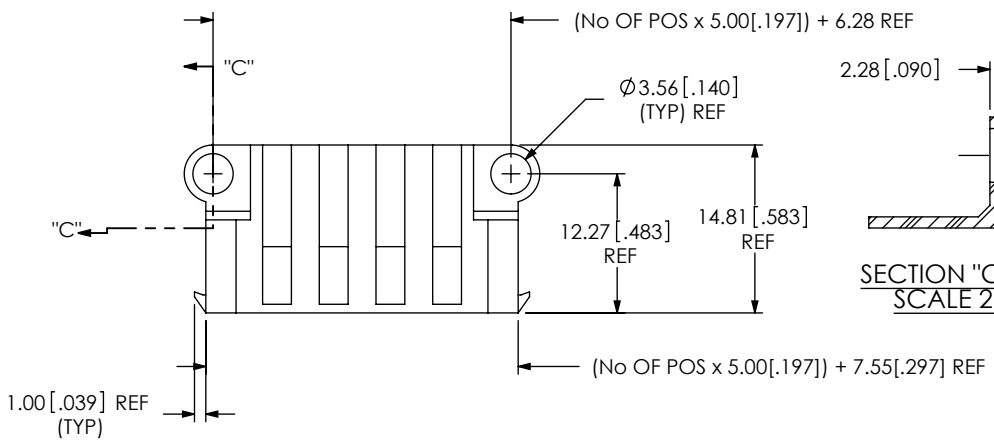


DO NOT SCALE FROM THIS PRINT



No OF POSITIONS  
-02, -03, -04, -06, -08

LEAD STYLE  
-01

TAIL LENGTH  
-01: FOR 1.57[.062] THICK PCB (USE SUB-T-1M40-01-X)  
-02: FOR 3.18[.125] THICK PCB (USE SUB-T-1M40-02-X)  
-03: FOR 2.36[.093] THICK PCB (USE SUB-T-1M40-03-X)

\* = NOT TOOLED

OPTION  
-SD: SCREW DOWN (SEE FIG 1, SHT 1)  
-LC: LOCKING CLIP (USE LC-07-TM) (SEE FIG 2, SHT 2)

RIGHT ANGLE

PLATING SPECIFICATION  
-L: 10 $\mu$ " GOLD IN CONTACT AREA, MATTE TIN ON TAIL  
-T: MATTE TIN CONTACT AND TAIL

STYLE	"A"	SUB-T-1M40-XX-X
-01	2.72[.107]	SUB-T-1M40-01-X
* -02	4.32[.170]	SUB-T-1M40-02-X
-03	3.51[.138]	SUB-T-1M40-03-X

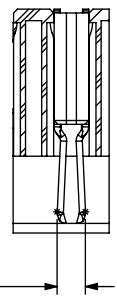
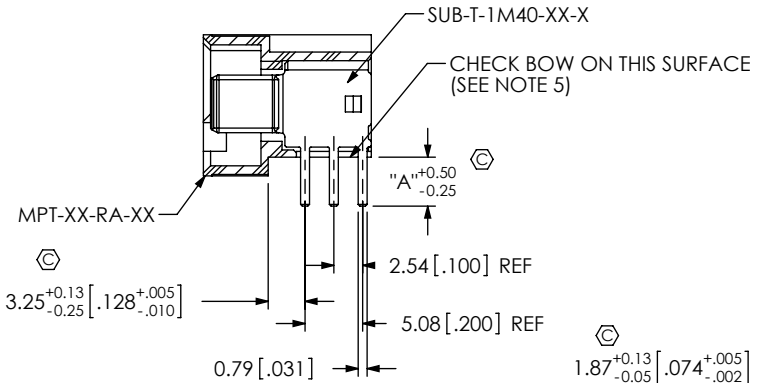
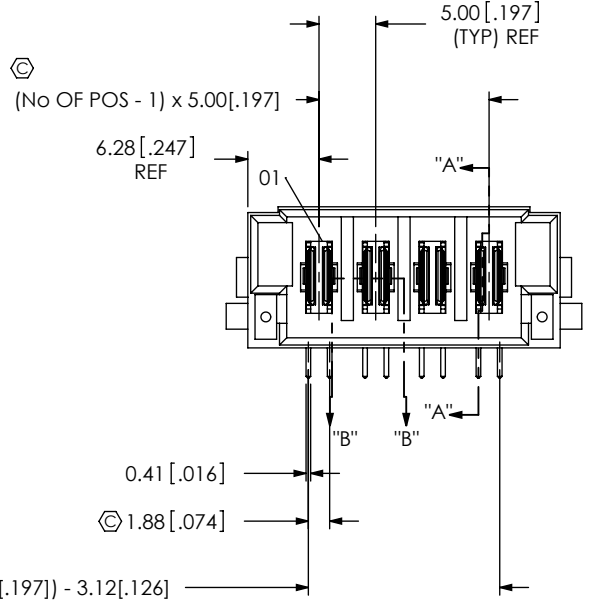
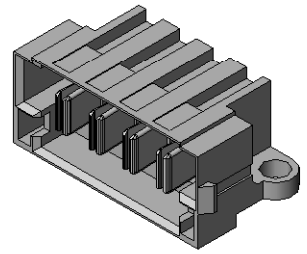


FIG 1  
MPT-04-01-X-RA-SD SHOWN

- NOTES:
1.  $\varnothing$  REPRESENTS A CRITICAL DIMENSION.
  2. BURR ALLOWANCE: 0.038[.0015] MAX.
  3. MINIMUM PUSHOUT FORCE: 4.45N[1 LB].
  4. PARTS TO BE PACKAGED IN TRAYS.
  5. BOW ALLOWED AT 0.002 MM/MM [.002 IN/IN]
  6. MINIMUM -LC PULLOUT FORCE: 2.23N [0.5LB]



UNLESS OTHERWISE SPECIFIED, DIMENSIONS ARE IN MILLIMETERS. TOLERANCES ARE:  
 DECIMALS ANGLES  
 .X:  $\pm 0.3[.01]$  2°  
 .XX:  $\pm 0.13[.005]$   
 .XXX:  $\pm 0.051[.0020]$

PROPRIETARY NOTE  
 THIS DOCUMENT CONTAINS INFORMATION CONFIDENTIAL AND PROPRIETARY TO SAMTEC, INC. AND SHALL NOT BE REPRODUCED OR TRANSFERRED TO OTHER DOCUMENTS OR DISCLOSED TO OTHERS OR USED FOR ANY PURPOSE OTHER THAN THAT WHICH IT WAS OBTAINED WITHOUT THE EXPRESSED WRITTEN CONSENT OF SAMTEC, INC.



520 PARK EAST BLVD, NEW ALBANY, IN 47150  
 PHONE: 812-944-6733 FAX: 812-948-5047  
 e-Mail: info@SAMTEC.com code: 55322

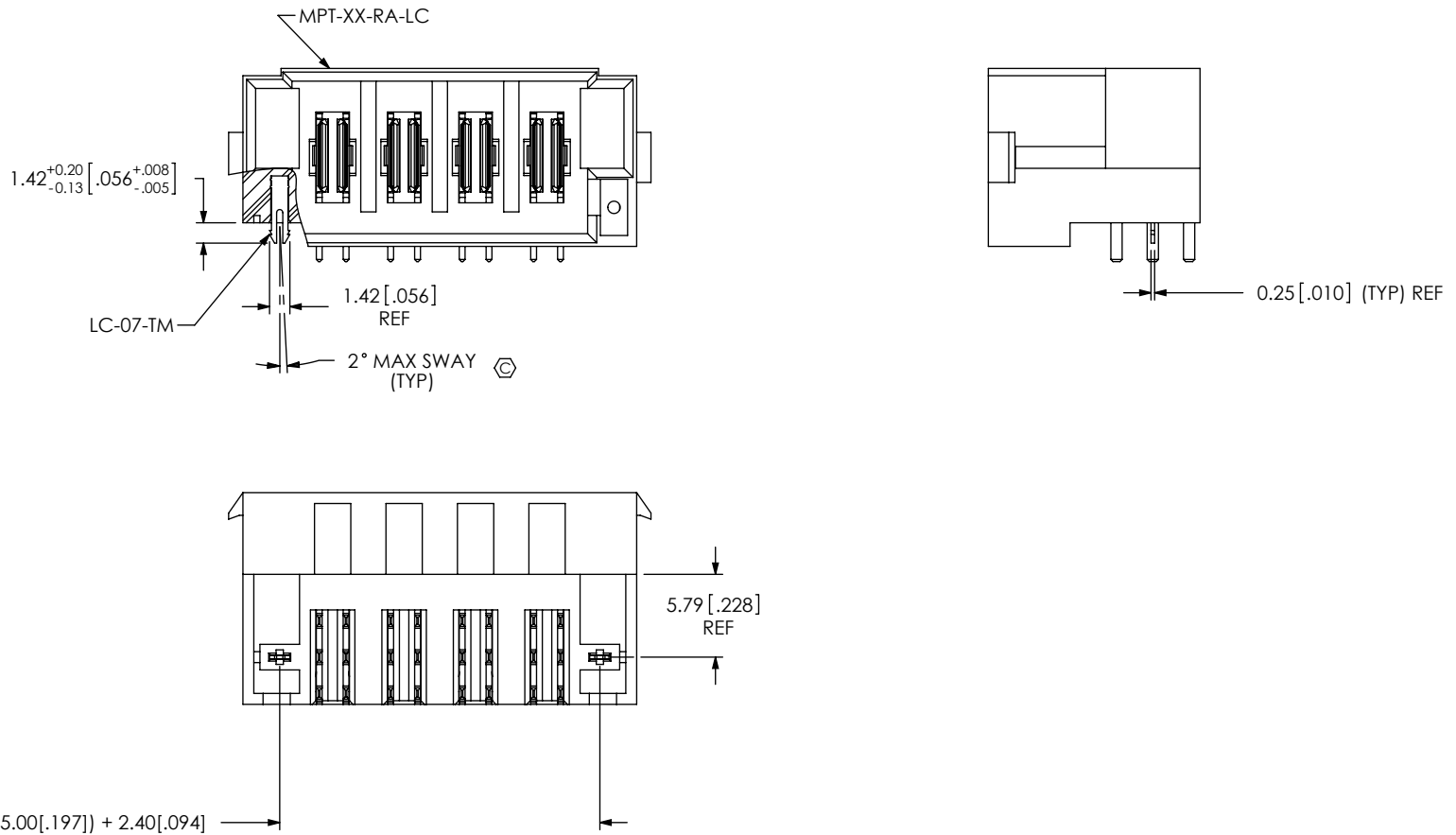
MATERIAL: DO NOT SCALE DRAWING SHEET SCALE: 1:0.666667  
 INSULATOR: LCP, COLOR: BLACK  
 CONTACT: COPPER ALLOY

DESCRIPTION:  
RIGHT ANGLE POWER TERMINAL

DWG. NO.  
MPT-XX-01-XX-X-RA-XX

BY: CLAY W 1/31/2007 SHEET 1 OF 2

FIG 2  
MPT-04-02-X-RA-LC SHOWN  
(SAME AS FIG 1, UNLESS OTHERWISE STATED)



Ⓢ  
(No OF POS x 5.00 [.197]) + 2.40 [.094]

PROPRIETARY NOTE  
THIS DOCUMENT CONTAINS INFORMATION  
CONFIDENTIAL AND PROPRIETARY TO  
SAMTEC, INC. AND SHALL NOT BE REPRODUCED  
OR TRANSFERRED TO OTHER DOCUMENTS OR  
DISCLOSED TO OTHERS OR USED FOR ANY  
PURPOSE OTHER THAN THAT WHICH IT WAS  
OBTAINED WITHOUT THE EXPRESSED WRITTEN  
CONSENT OF SAMTEC, INC.

DO NOT SCALE DRAWING

SHEET SCALE: 2:1

**samtec**

520 PARK EAST BLVD, NEW ALBANY, IN 47150  
PHONE: 812-944-6733 FAX: 812-948-5047  
e-Mail: info@SAMTEC.com code: 55322

DESCRIPTION:  
RIGHT ANGLE POWER TERMINAL

DWG. NO.  
MPT-XX-01-XX-X-RA-XX

BY: CLAY W 1/31/2007 SHEET 2 OF 2