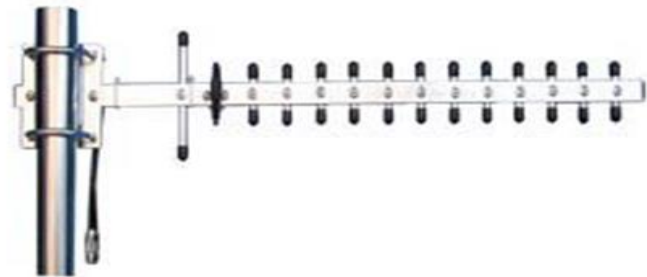




## YAGI-14-2.4

# 2.4GHz 14dBi YAGI Antenna Datasheet



### Electrical Specifications

Frequency Range: **2400 – 2483MHz**

Nominal Impedance: **50 ohm**

Gain: **14dBi**

VSWR: **≤1.5**

F/B Ratio: **>28dB**

Horizontal Beam Width: **36°**

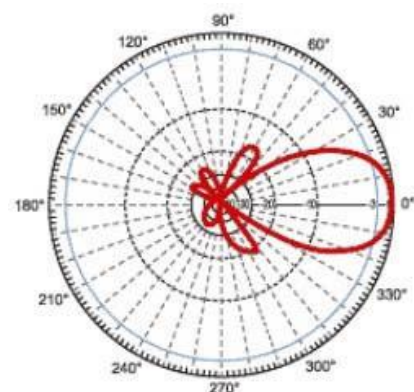
Vertical Beam Width: **35°**

Maximum Input Power: **50 W**

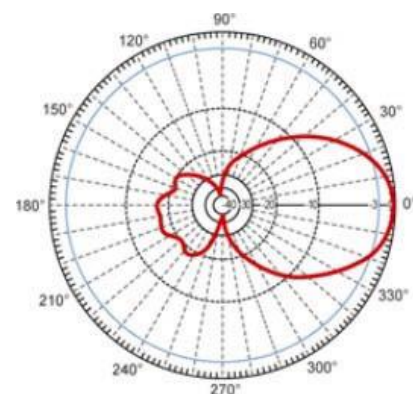
Polarization: **Vertical**

Connector: **SMA male**

**Vertical**



**Horizontal**



## Mechanical Specifications

Support Boom material: **Steel Bracket**

Mounting: **Pole**

Element Material: **Aluminium**

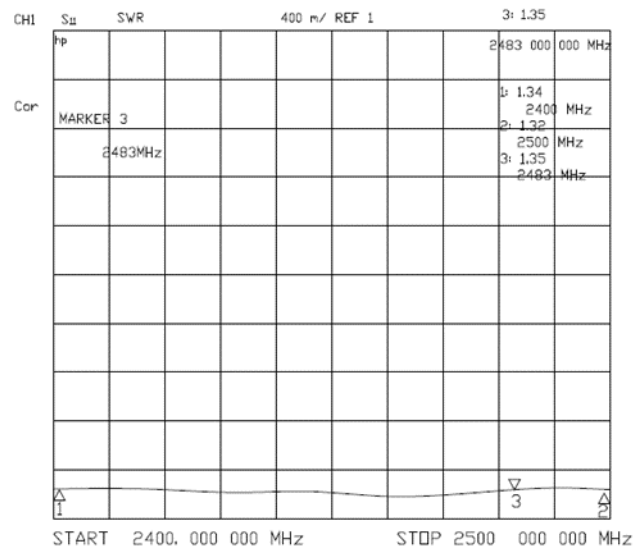
Number of Elements: **14**

Antenna Dimensions: **590 x 85 x 45mm**

Antenna weight: **320g**

Operating Temperature **-40°C to+70°C**

RoHS Compliant: **Yes**



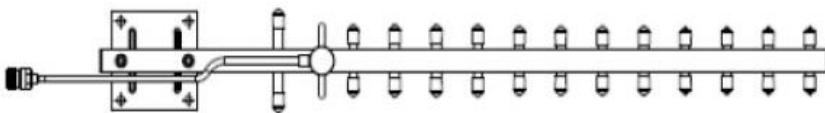
## Order Code

**YAGI-14-2.4**

Yagi antennas are typically very directional and are used for point to point, or to extend the range of a point to multi-point system.

This antenna has an excellent front to back ratio to block unwanted signals and due to its aluminium composition provides outstanding corrosion resistance and longevity in the harshest environments.

Vertical Polarization



**Low Power Radio Solutions Ltd**  
Two Rivers industrial Estate  
Station Lane, Witney OX28 4BH, UK  
+44(0) 1993 709418  
sales@lprs.co.uk