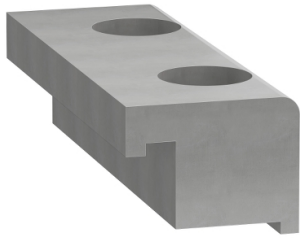


# Product datasheet

Specifications



clamping claws, PAS44, TAS42/43,  
nut 8 - 10 pieces

VW33MF10814

EAN Code: 3606485229003

## Main

Range of product	Lexium linear motion
Product or component type	Clamping jaw
Product specific application	To mount portal axis on fixed support
Accessory / separate part category	Maintenance accessories

## Complementary

Product compatibility	PAS 44 linear axis, outer dimension : 110 x 110 mm TAS 42 linear axis, outer dimension : 150 x 54 mm TAS 43 linear axis, outer dimension : 200 x 59 mm
Range compatibility	Lexium PAS Lexium TAS

## Packing Units

Unit Type of Package 1	PCE
Number of Units in Package 1	1
Package 1 Height	6.5 cm
Package 1 Width	12.8 cm
Package 1 Length	19.6 cm
Package 1 Weight	885.333 g
Unit Type of Package 2	S04
Number of Units in Package 2	12
Package 2 Height	30.0 cm
Package 2 Width	40.0 cm
Package 2 Length	60.0 cm
Package 2 Weight	11.764 kg

## Logistical informations

Country of origin	DE
-------------------	----

## Contractual warranty

Warranty (in months)	18
----------------------	----


## Environmental Data

Schneider Electric aims to achieve Net Zero status by 2050 through supply chain partnerships, lower impact materials, and circularity via our ongoing “Use Better, Use Longer, Use Again” campaign to extend product lifetimes and recyclability.


[Environmental Data explained >](#)

[How we assess product sustainability >](#)

### Use Better

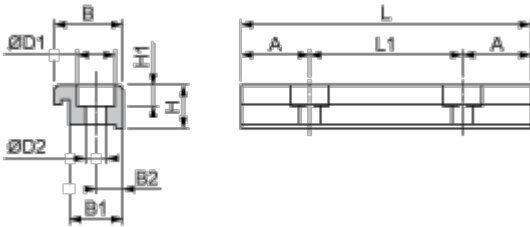
 <b>Materials and Substances</b>	
Packaging made with recycled cardboard	No
Packaging without single use plastic	No
<a href="#">EU RoHS Directive</a>	Pro-active compliance (Product out of EU RoHS legal scope)
REACH Regulation	<a href="#">REACH Declaration</a>
PVC free	Yes

### Use Again

 <b>Repack and remanufacture</b>	
Take-back	No

Dimensions Drawings

Dimensions



Dimensions in mm

A	B	B1	B2	H	H1	L	L1	ØD1	ØD2
18	28	20	10	22	12	76	40	15	9

Dimensions in in.

A	B	B1	B2	H	H1	L	L1	ØD1	ØD2
0.71	1.10	0.79	0.39	0.87	0.47	2.99	1.57	0.59	0.35