



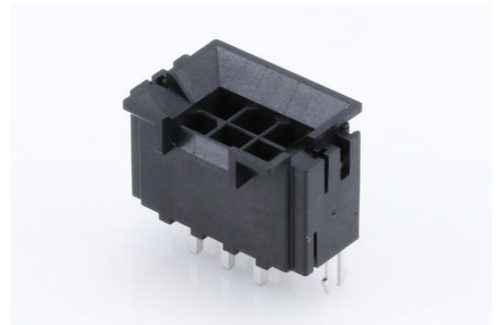
Part Number : [440680057](#)

Product Description : Mini-Fit BMI, 260C Wave Solderable, 4.20mm Pitch, Dual Row, Vertical, for 1.60mm PCB, 6 Circuits, Gold (Au) Plating, with Solderable Retention Clip

Series Number : 44068

Status : Active

Product Category : PCB Headers and Receptacles



Documents & Resources

Drawings

[440680057_sd.pdf](#)

[PK-43879-001-000.pdf](#)

3D Models and Design Files

[STEP AP242](#)

[SOLIDWORKS](#)

[Creo](#)

[Symbol and Footprint \(Multi-Format\)](#)

Specifications


[PS-43810-001-001.pdf](#)

[PS-45750-001-001.pdf](#)

[TS-43879-001-001.pdf](#)

Product Environment Compliance

Compliance

| | |
|--------------------|--|
| GADSL/IMDS | Not Relevant |
| China RoHS |  per SJ/T 11365-2006 |
| EU ELV | Not Relevant |
| Low-Halogen Status | Not Low-Halogen per IEC 61249-2-21 |
| REACH SVHC | Not Contained per D(2025)4165-DC (25 June 2025) |

EU RoHS

Compliant per EU 2015/863

Compliance Statements

- EU RoHS
- REACH SVHC
- Low-Halogen

Industry Documents

- IPC 1752A Class C
- IPC 1752A Class D
- Molex Product Compliance Declaration
- IEC-62474
- chemSHERPA (xml)

Substances of Interest

- PFAS

EU RoHS Certificate of ComplianceAdditional Product Compliance Information**Part Details****General**

| | |
|----------------|---|
| Status | Active |
| Category | PCB Headers and Receptacles |
| Series | 44068 |
| Description | Mini-Fit BMI, 260C Wave Solderable, 4.20mm Pitch, Dual Row, Vertical, for 1.60mm PCB, 6 Circuits, Gold (Au) Plating, with Solderable Retention Clip |
| Application | Board-to-Board, Power, Wire-to-Board |
| Comments | Current = 13A max. per circuit when header is mated to a receptacle loaded with 45750 Mini-Fit Plus HCS Crimp Terminal Crimped to 16 AWG wire. See Molex product specification PS-45750-001 for additional current de-rating information. |
| Component Type | PCB Header |
| Product Name | Mini-Fit BMI |

| | |
|-----|--------------|
| UPC | 800755952421 |
|-----|--------------|

Agency

| | |
|-----|---------|
| CSA | LR19980 |
| UL | E29179 |

Electrical

| | |
|-------------------------------|-------|
| Current - Maximum per Contact | 13.0A |
| Voltage - Maximum | 600V |

Physical

| | |
|--------------------------------|--------------------------------|
| Breakaway | No |
| Circuits (Loaded) | 6 |
| Circuits (maximum) | 6 |
| Color - Resin | Black |
| Durability (mating cycles max) | 30 |
| Flammability | 94V-0 |
| Glow-Wire Capable | No |
| Material - Metal | Brass |
| Material - Plating Mating | Gold |
| Material - Plating Termination | Gold |
| Material - Resin | High Temperature Thermoplastic |
| Net Weight | 3.827/g |
| Number of Rows | 2 |
| Orientation | Vertical |
| Packaging Type | Tray |
| PCB Locator | Yes |
| PCB Retention | Yes |
| PCB Thickness - Recommended | 2.40mm |
| PC Tail Length | 4.42mm |
| Pitch - Mating Interface | 4.20mm |
| Pitch - Termination Interface | 4.20mm |
| Plating min - Mating | 0.762µm |
| Plating min - Termination | 0.762µm |
| Polarized to PCB | Yes |

| | |
|-------------------------------|----------------|
| Shrouded | Partial |
| Stackable | No |
| Temperature Range - Operating | -40° to +105°C |
| Termination Interface Style | Through Hole |

Solder Process Data

| | |
|------------------------------|------|
| Max-Duration | 5 |
| Lead-Free Process Capability | WAVE |
| Max-Cycle | 1 |
| Max-Temp | 260 |

Mates With / Use With

Mates with Part(s)

| Description | Part Number |
|---|--------------|
| Mini-Fit BMI Vertical Dual Row Receptacle Headers | <u>42385</u> |
| Mini-Fit BMI Dual Row Receptacle Housings | <u>42474</u> |
| Mini-Fit HCS Vertical Dual Row PCB Receptacles | <u>44475</u> |
| Mini-Fit BMI Dual Row Receptacle Housings | <u>44516</u> |
| Mini-Fit Jr. Receptacle Housings | <u>5557</u> |