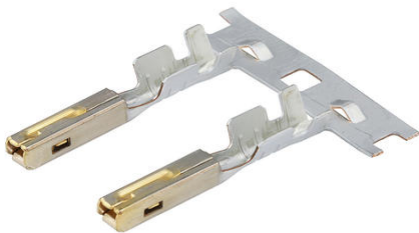




**Part Number :** [330012021](#)  
**Product Description :** MX150 Female Terminal for Unsealed Connectors, Gold Plating, 16-14 AWG, Right Reel Payoff. Not suitable for MX150 Sealed Connectors.  
**Series Number :** 33001  
**Status :** Active  
**Product Category :** Crimp Terminals



## Documents & Resources

### Drawings

[330012021 sd.pdf](#)

### Specifications

[AS-33012-002-001.pdf](#)

[AS-33012-002-CH-001.pdf](#)

[AS-33012-002-FR-001.pdf](#)

[PS-33012-002-001.pdf](#)

[TS-33001-002-001.pdf](#)

## Product Environment Compliance

### Compliance

GADSL/IMDS	Duty-To-Declare
China RoHS	Not Relevant
EU ELV	Compliant per 2000/53/EC
Low-Halogen Status	Not Relevant
REACH SVHC	Not Contained per D(2025)4165-DC (25 June 2025)
EU RoHS	Compliant per EU 2015/863

### Compliance Statements

- EU RoHS
- REACH SVHC
- Low-Halogen

### Industry Documents

- IPC 1752A Class C
- IPC 1752A Class D
- Molex Product Compliance Declaration
- IEC-62474
- chemSHERPA (xml)

### Substances of Interest

- PFAS

### EU RoHS Certificate of Compliance

### Additional Product Compliance Information

---

## Part Details

### General

Status	Active
Category	Crimp Terminals
Series	33001
Description	MX150 Female Terminal for Unsealed Connectors, Gold Plating, 16-14 AWG, Right Reel Payoff. Not suitable for MX150 Sealed Connectors.
Application	Power, Wire-to-Board, Wire-to-Wire, Automotive
Comments	Right Reel Payoff, Large Polarization Rib; For automatic and semi-automatic crimping, use Left Reel Payoff terminals. See Sales Drawing for Left Reel Payoff Part Numbers; Not to be used with MX150 Sealed Connectors
Product Name	MX150
UPC	822350084130

### Electrical

Current - Maximum per Contact	Contact Molex
Voltage - Maximum	14V DC

### Physical

Gender	Female
--------	--------

Grip Code	14
Material - Metal	High Performance Alloy (HPA)
Material - Plating Mating	Gold
Material - Plating Termination	Tin
Net Weight	0.435/g
Packaging Type	Reel
Plating min - Mating	0.762µm
Plating min - Termination	2.540µm
Termination Interface Style	Crimp or Compression
Wire Insulation Diameter	2.70mm max.
Wire Size (AWG)	14, 16
Wire Size mm <sup>2</sup>	1.25-2.00

### Solder Process Data

Lead-Free Process Capability	N/A
------------------------------	-----

### Mates With / Use With

#### Use with Part(s)

Description	Part Number
MX150 Mat-Sealed Dual Row Female Connector Assemblies	<u><a href="#">33472</a></u>
MX150 Mat-Sealed Single Row Female Connector Assemblies	<u><a href="#">33471</a></u>

---

### Application Tooling

#### Global

Description	Part Number
Extraction Toolkit for MX150 Connectors	<u><a href="#">2002220700</a></u>
PremiumGrade Hand Crimp Tool for MX150 Female Terminals, 16-14 AWG	<u><a href="#">638115900</a></u>
PremiumGrade Hand Crimp Tool for MX150 Female Terminals for	<u><a href="#">638116100</a></u>

1.00mm <sup>2</sup> and 1.50mm <sup>2</sup> Metric Wires	
Extraction Tool for MX150L, MX150, PT Bulb Socket, iGrid, SPOX, and Wire-to-Motor Terminals	<u>638131500</u>
ServiceGrade Hand Crimp Tool for MX150 Crimp Terminals, 22-14 AWG	<u>640160133</u>