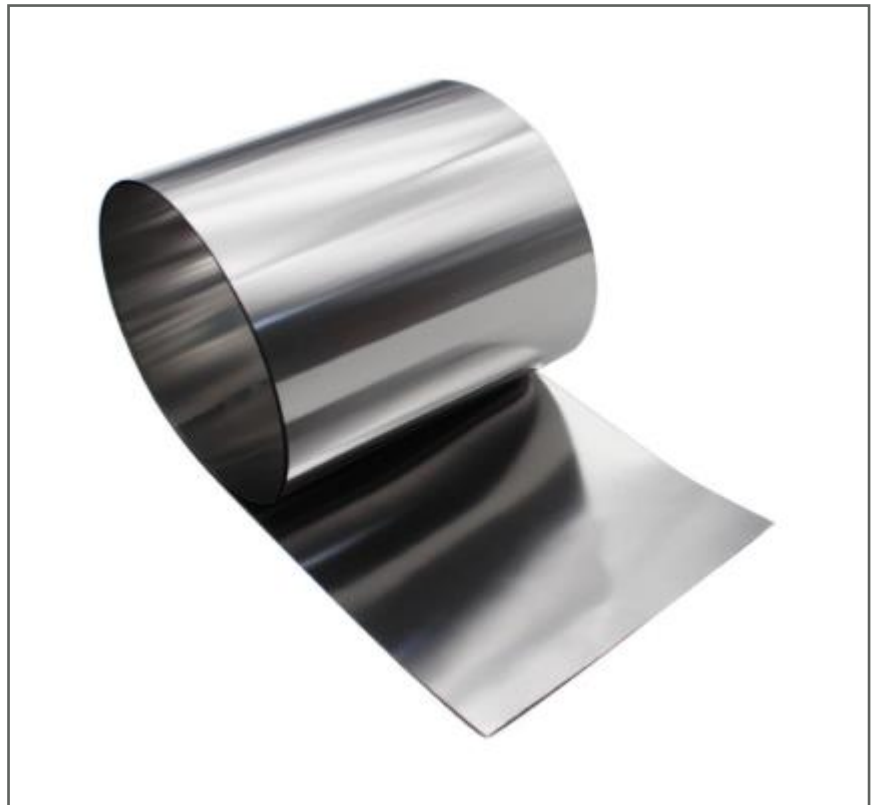


## Features

- **Packaging:** Supplied in a durable can in order to maintain the material's flatness and protect against corrosion.
- **Corrosion and rust resistant.** It offers high resistance to rust and corrosion, making it suitable for various industrial applications and harsh environments.
- **Durable** and long-lasting.
- Suitable for **precision adjustments** and alignment in machinery, tool and die set up, and machine repair/maintenance.
- Offers good resistance to oxidation in continuous service up to approximately 1600°F (871°C). However, exposure to high temperatures (above 400°C) will remove the benefits of the cold working, returning it to properties similar to an annealed state.

## RS PRO STAINLESS (SHIM IN A CAN) L:50IN X W:6IN X T:0.001IN

RS Stock No: 0767806



RS PRO is the own brand of RS. The RS PRO Seal of Approval is your assurance of professional quality, a guarantee that every part is rigorously tested, inspected, and audited against demanding standards. Making RS PRO the Smart Choice for our customers.

## Product Description

### *RS PRO Precision Stainless Steel "Shim in a Can"*

*RS PRO Precision Stainless Steel "Shim in a Can" is a full hard, cold-rolled Type 300 series stainless steel material known for its excellent corrosion resistance and high tensile strength. The shim is supplied as a single sheet but is typically supplied in a can for ease of storage.*

#### **Key Features:**

- **Material Grade:** *Stainless Steel Type 300 Series Full Hard (equivalent to AISI-T301, meeting AMS 5519 and ASTM A666 specifications).*
- **Temper:** *Full Hard condition, achieved through cold working rather than heat treatment.*
- **High Strength:** *Known for its high ultimate tensile strength and yield strength, ideal for applications requiring robust materials.*
- **Hardness:** *Rockwell Hardness C40-45.*

#### **Applications:**

- *Level surfaces in industrial and mechanical applications.*
- *Aligning and levelling pumps, motors, and other heavy machinery.*
- *Spacing for fasteners and securing bolts in construction.*
- *Adjusting tool and die sets during manufacturing.*
- *Machine Repair - Used to fill small gaps*

## General Specifications

<b>Material</b>	Stainless Steel Type 300 Series Full Hard
<b>Form</b>	Shim in a Can
<b>Length</b>	50IN
<b>Width</b>	6IN

Thickness	0.001IN
-----------	---------

### Mechanical Properties

Tensile Strength	170,000 psi minimum
Hardness	Rockwell Hardness C40-45
Density	7.9 to 8.03 g/cm <sup>3</sup>
Yield Strength	140,000 psi minimum
Thermal Conductivity	~51.9 W/m·K
Elongation in 2"	2% min

### Approvals

Compliance/Certifications	SAE-30302, AISI-T302, and ASTM A-666
---------------------------	--------------------------------------

### Similar Products

RS Code	Form	Thickness
0767807	CAN	0.10MM
0767808	CAN	0.20MM
0767809	ASSORTED	0.05MM, 0.10MM, 0.15MM, 0.20MM, 0.25MM, 0.30MM, 0.40MM, 0.50MM
0767811	CAN	0.30MM
0767812	BOX	0.50MM
0767813	CAN	0.05MM
0767814	CAN	0.25MM
0767815	BOX	0.40MM
0767816	CAN	0.15MM
0767817	BOX	0.80MM
0767818	BOX	0.65MM
0767819	CAN	0.010"
0767820	CAN	0.003"
0767821	CAN	0.005"
0767822	CAN	0.002"
0767823	ASSORTED	0.001", 0.002", 0.003", 0.005", 0.008", 0.010", 0.015", 0.020"
0767824	CAN	0.008"
0767825	BOX	0.015"
0767827	CAN	0.004"

0767828	BOX	0.020"
---------	-----	--------