

DETAILS

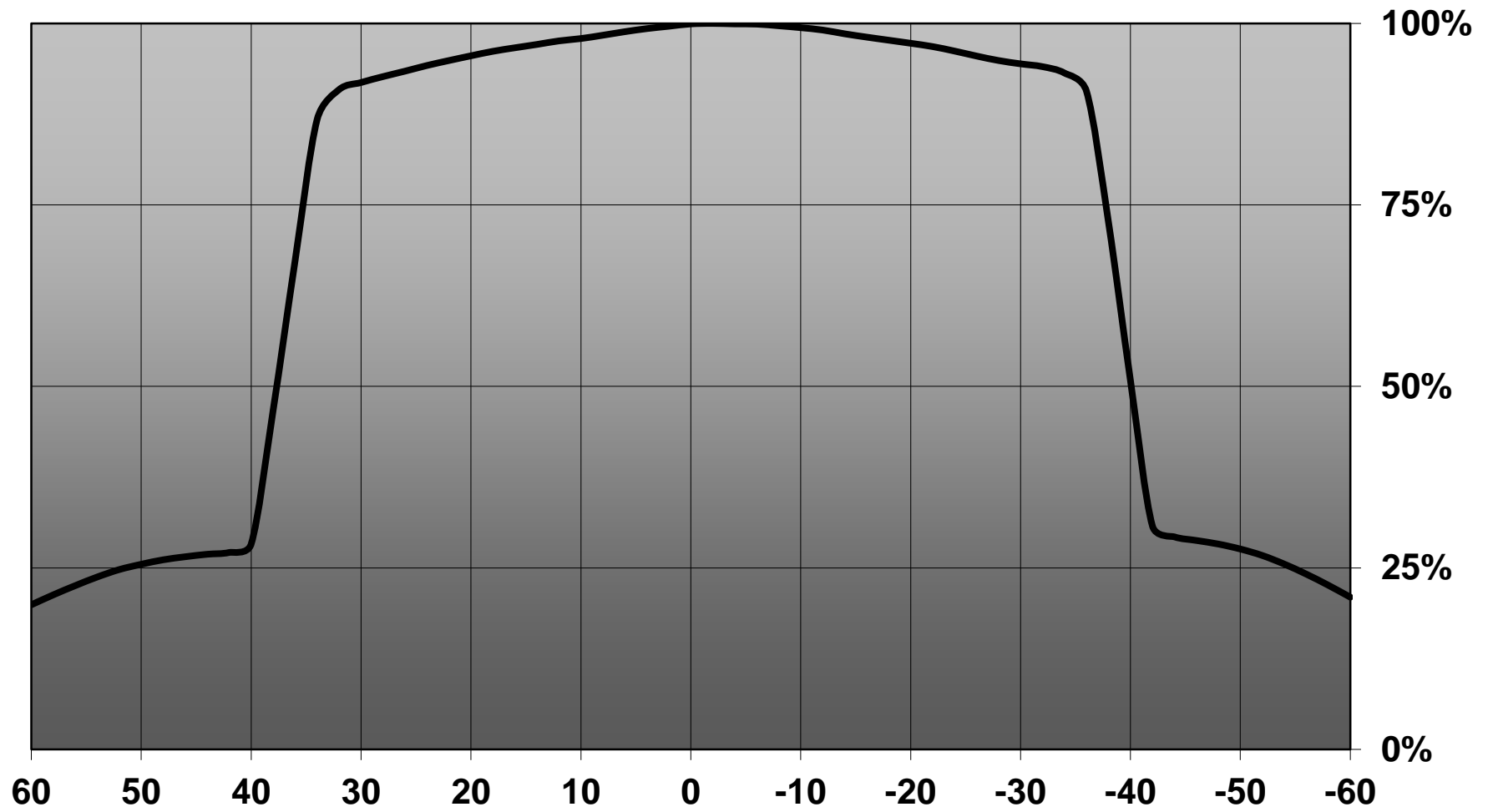
Product Number	C12469_LISA2-R-PIN
Family	Lisa2
Type	Reflector
Color	white
Diameter	9,9 mm
Height	6,5 mm
Style	round
Optic Material	HRPC
Holder Material	
Fastening	pin, glue
Status	ready
ROHS Compliant	Yes
Date Updated	12/03/2015

OPTICAL PROPERTIES

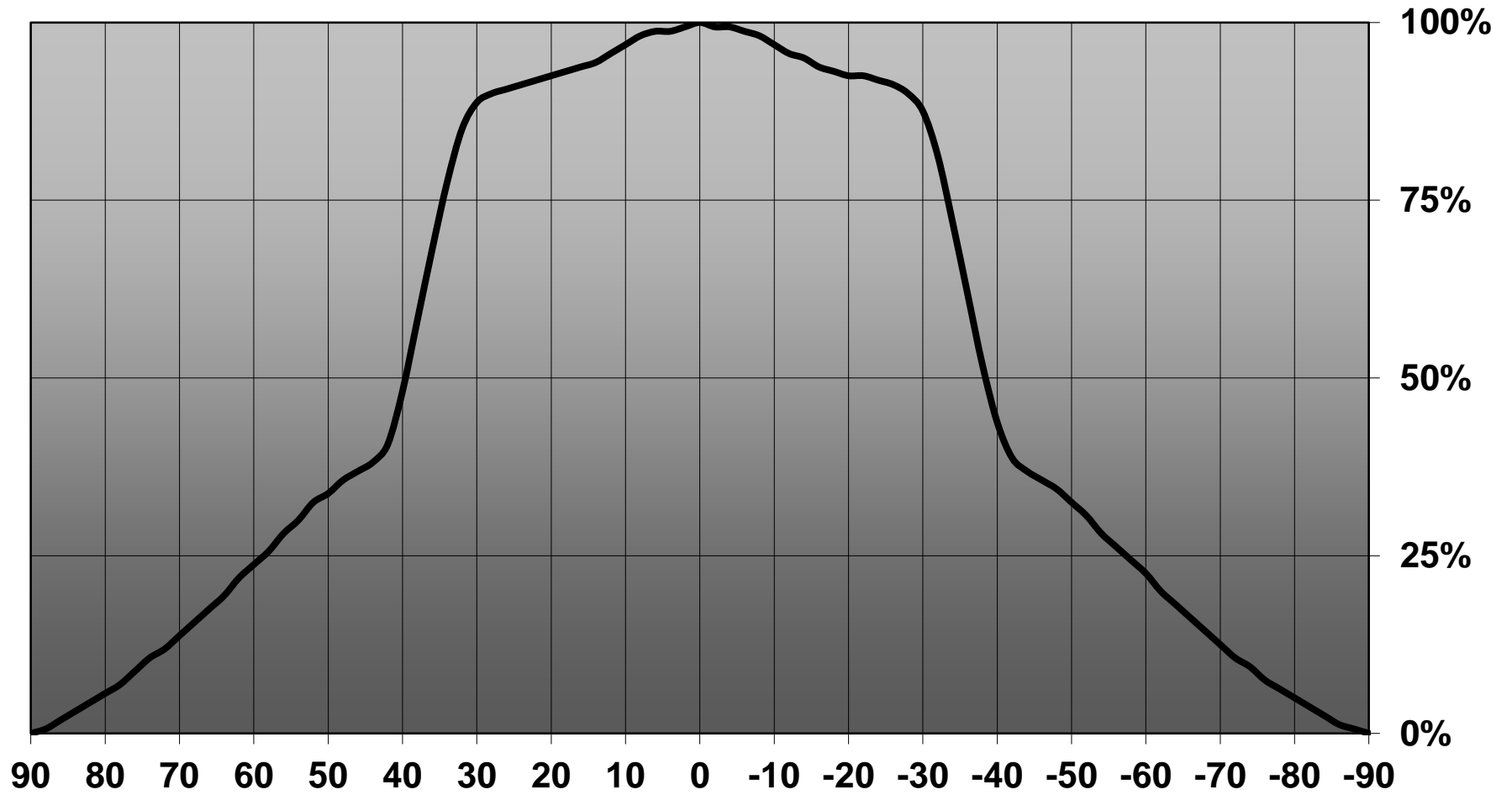
LED	Viewing	Light	Effi-	cd/lm	Connector
	Angle	Beam	ciency		
XQ-E	sim: 76	WWW-class	sim: 90 %	sim: 0.450	-
LUXEON H50-2	sim: 80	WWW-class	sim: 90 %	sim: 0.440	-
XP-L	sim: 81	WWW-class	sim: 83 %	sim: 0.360	-
Oslon SSL 80	76 deg	WWW-class	92 %	0.500	-
LUXEON Rebel	77 deg	WWW-class	88 %	0.410	-
NCSxx19A	78 deg	WWW-class	84 %	0.460	-
LUXEON Z	78 deg	WWW-class	86 %	0.440	-
Duris P5	78 deg	WWW-class	83 %	0.400	-
Z8Y15	78 deg	WWW-class	85 %	0.440	-
Z8Y19	79 deg	WWW-class	85 %	0.450	-
Z5	80 deg	WWW-class	84 %	0.360	-
NVSxx19A	80 deg	WWW-class	84 %	0.400	-
XT-E	80 deg	WWW-class	85 %	0.460	-
XB-D	81 deg	WWW-class	87 %	0.380	-
XP-E	82 deg	WWW-class	86 %	0.350	-
Oslon Square EC	82 deg	WWW-class	85 %	0.370	-
LUXEON T	82 deg	WWW-class	82 %	0.400	-
LUXEON Rebel ES	83 deg	WWW-class	90 %	0.360	-
Oslon SSL 150	83 deg	WWW-class	91 %	0.300	-
LUXEON A	83 deg	WWW-class	88 %	0.370	-
Luxeon C	84 deg	WWW-class	83 %	0.380	-
XP-G	86 deg	WWW-class	89 %	0.330	-



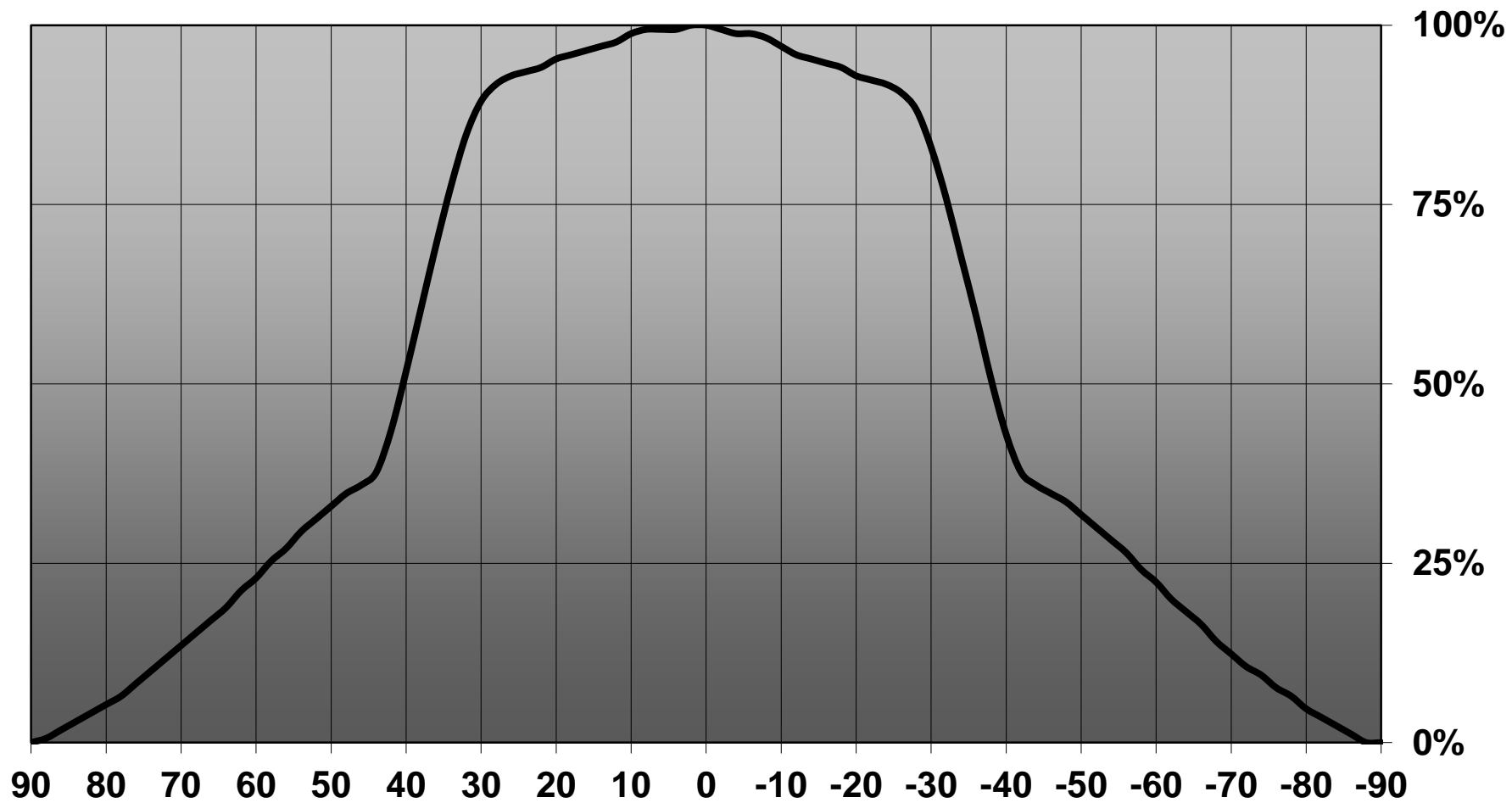
Relative intensity of C12469_LISA2-R-PIN_(Luxeon Z)



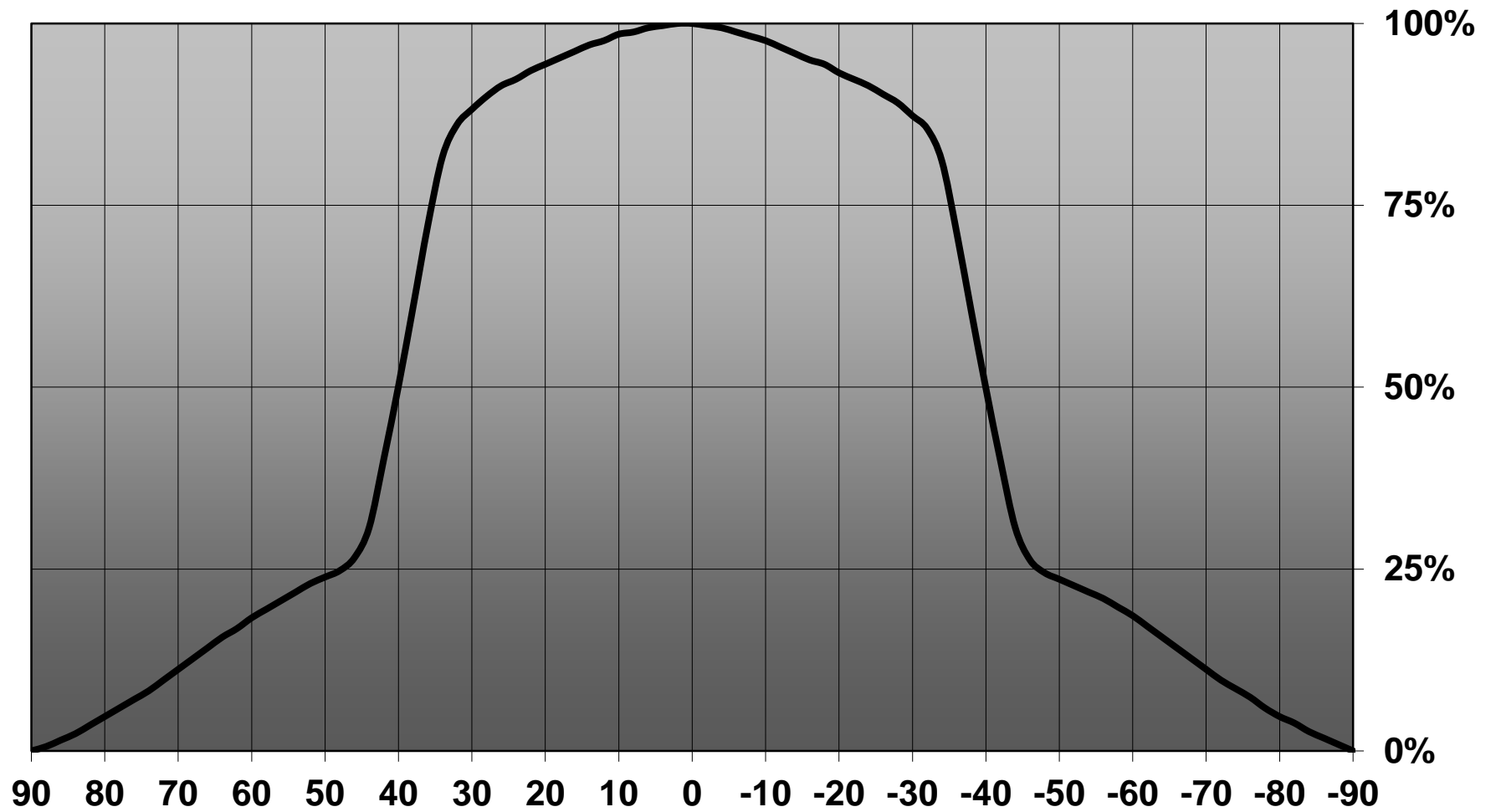
Relative intensity of C12469_LISA2-R-PIN_(SZ8_Y15)



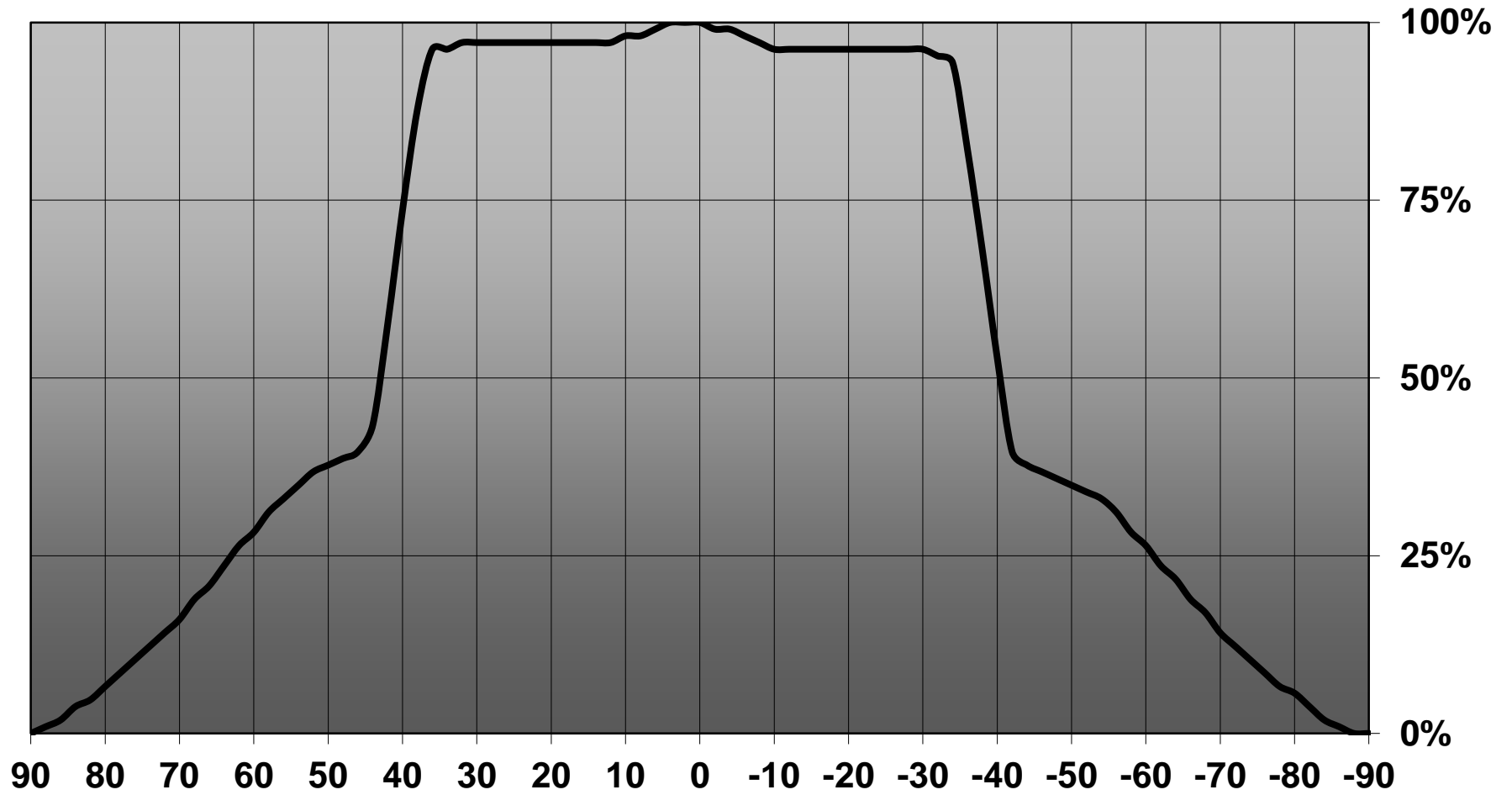
Relative intensity of C12469_LISA2-R-PIN_(SZ8_Y19)



Relative intensity of C12469_LISA2-R-PIN_(XT-E)



Relative intensity of C12469_LISA2-R-PIN_(Luxeon_C_White)

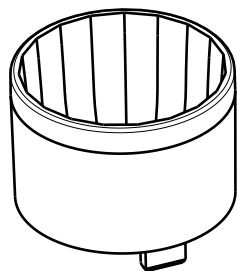


D

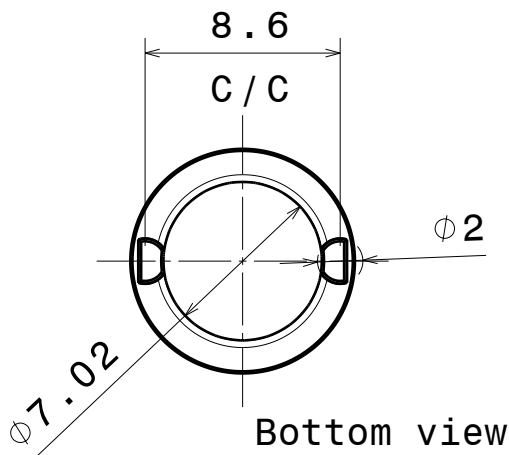
C

B

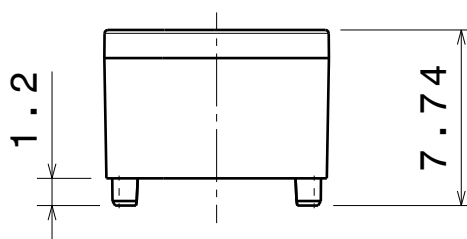
A



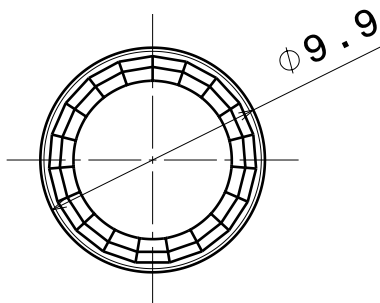
Isometric view



Bottom view



Front view



Top view

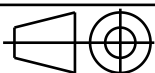
Reflector material : PC

Tolerances if not otherwise shown
 According to DIN ISO 2768-1
 Linear measures:
 Up to 30mm class M, otherwise class C.
 According to DIN ISO 2768-2
 Form and position: class L



Ledil Oy
 Salorankatu 10
 FIN 24240 SALO
 Finland

THIRD ANGLE PROJECTION:



DRAWING TITLE

Datasheet_Lisa2-reflector

This drawing is the property
 of LEDiL Oy. It may not be
 reproduced, copied or
 communicated without a written
 agreement with LEDiL Oy."

SIZE PART NUMBER

A4

-

SCALE 3:1 WEIGHT

-

SHEET 1/1

D

A

4

4

3

3

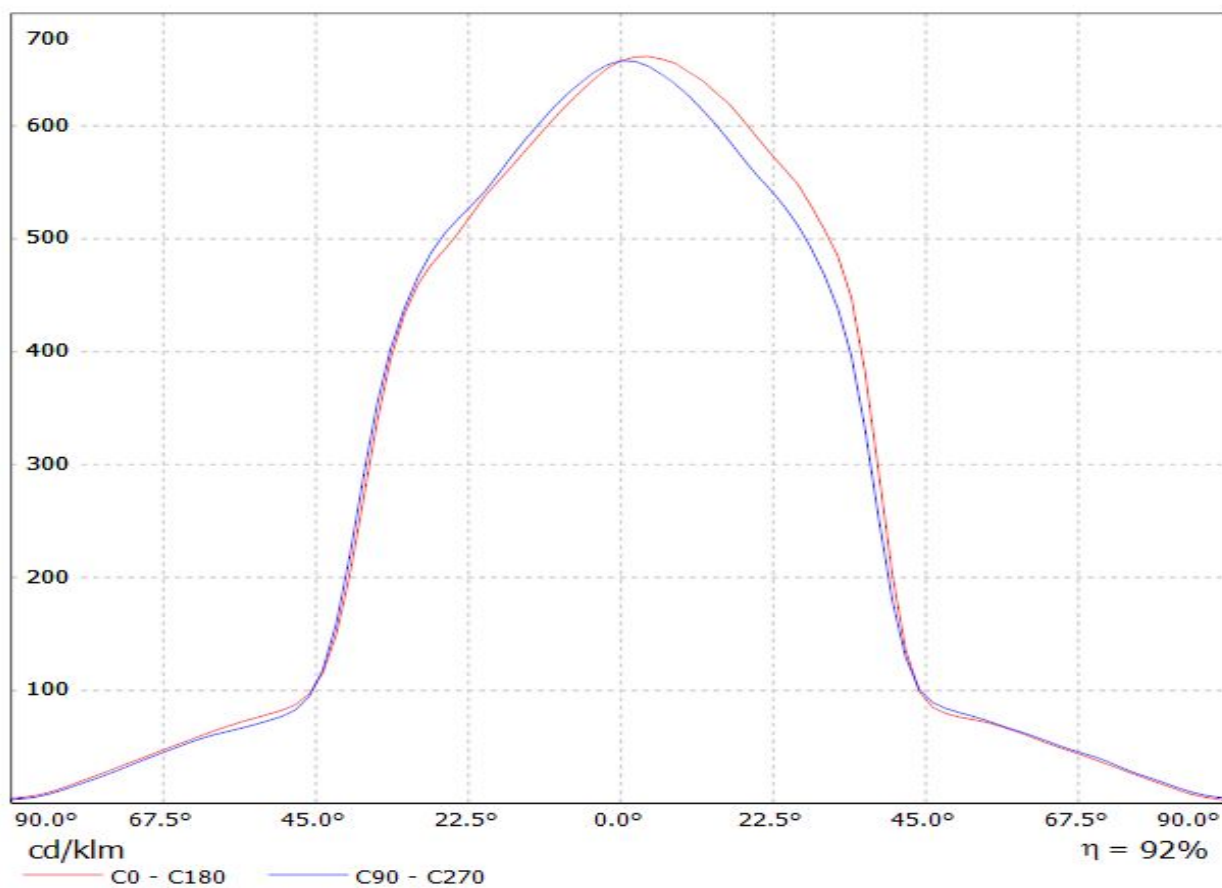
2

2

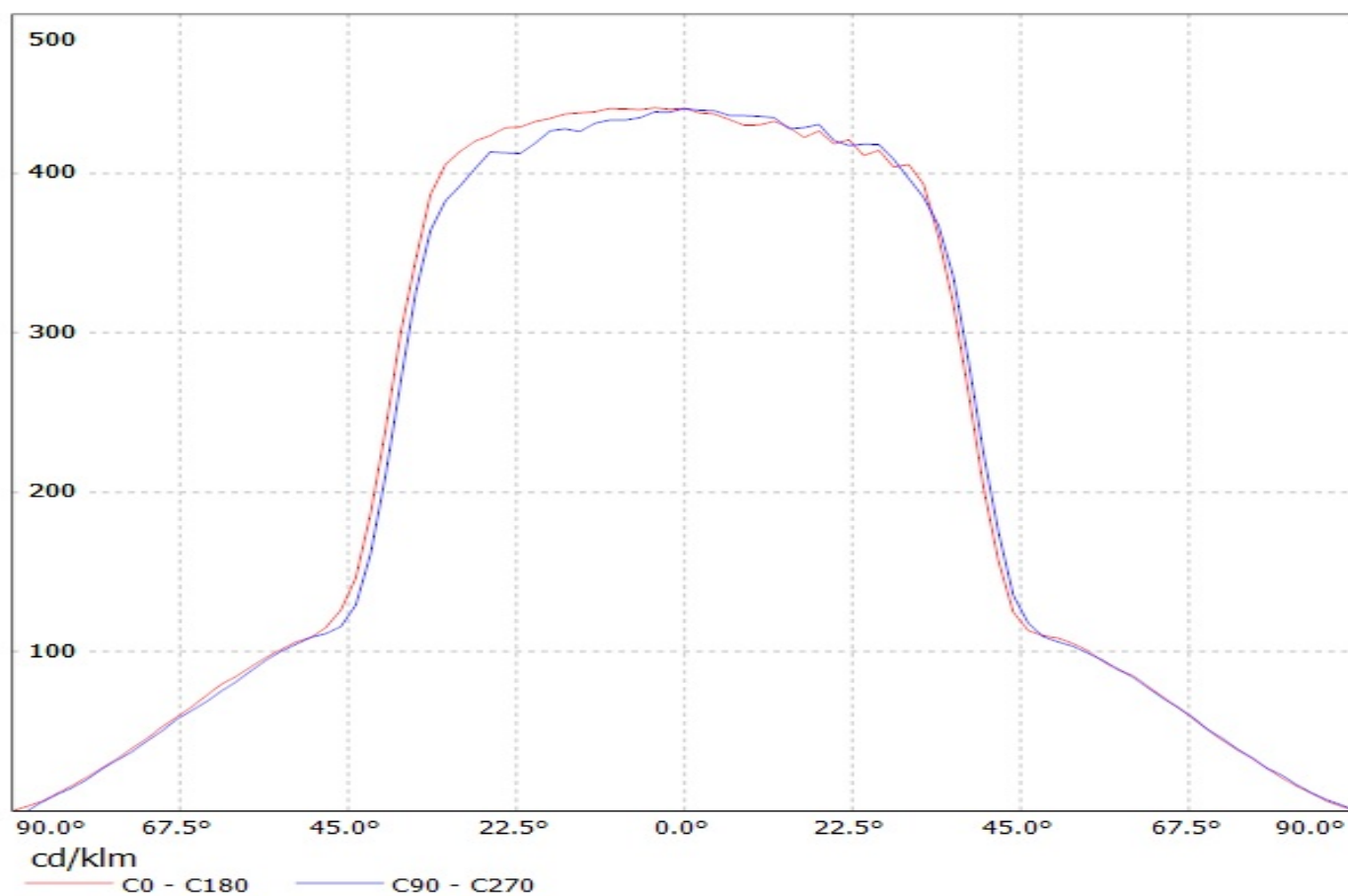
1

1

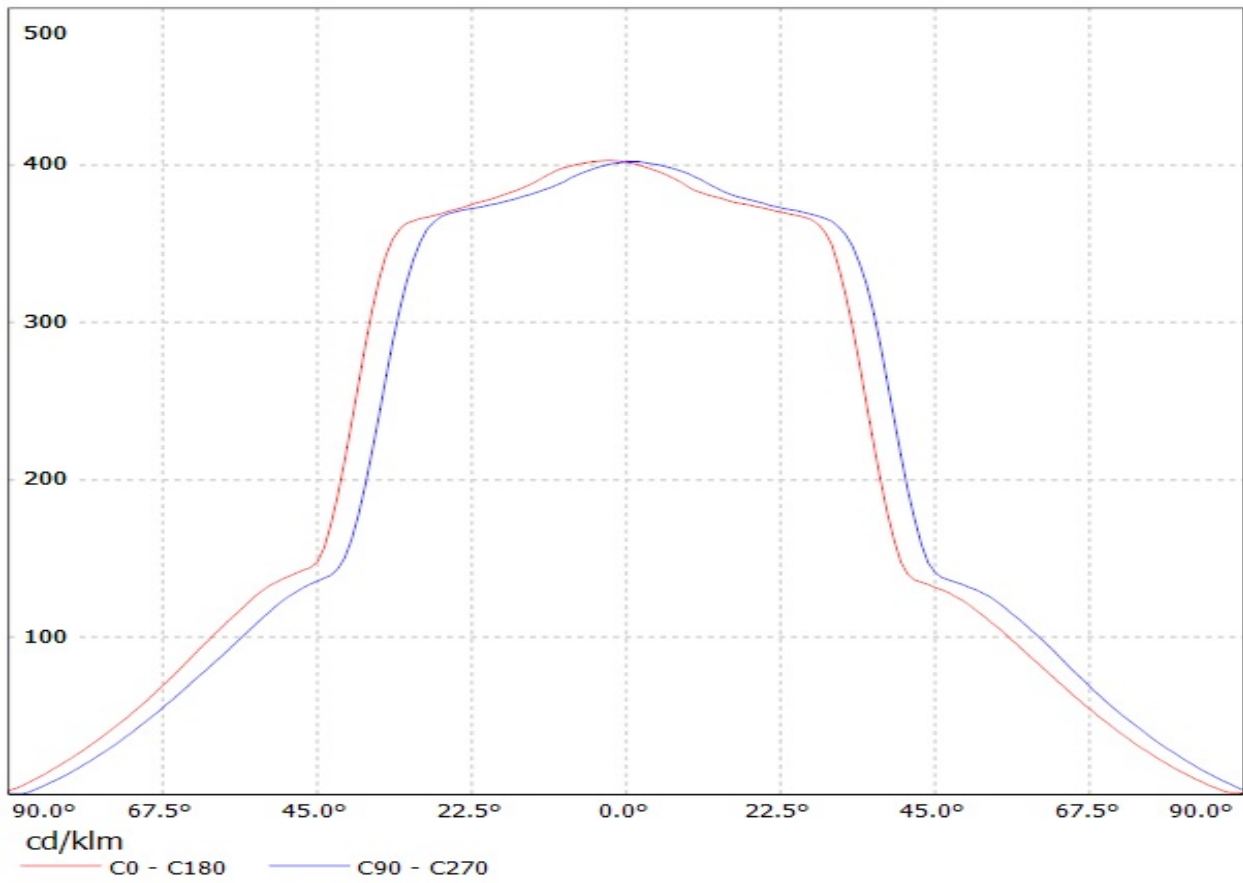
Luminaire: LEDiL C12469_LISA2-R-PIN_(SSL80) Eff.92%
Lamps: 1 x Osram Oslon SSL80 (79lm@250mA)



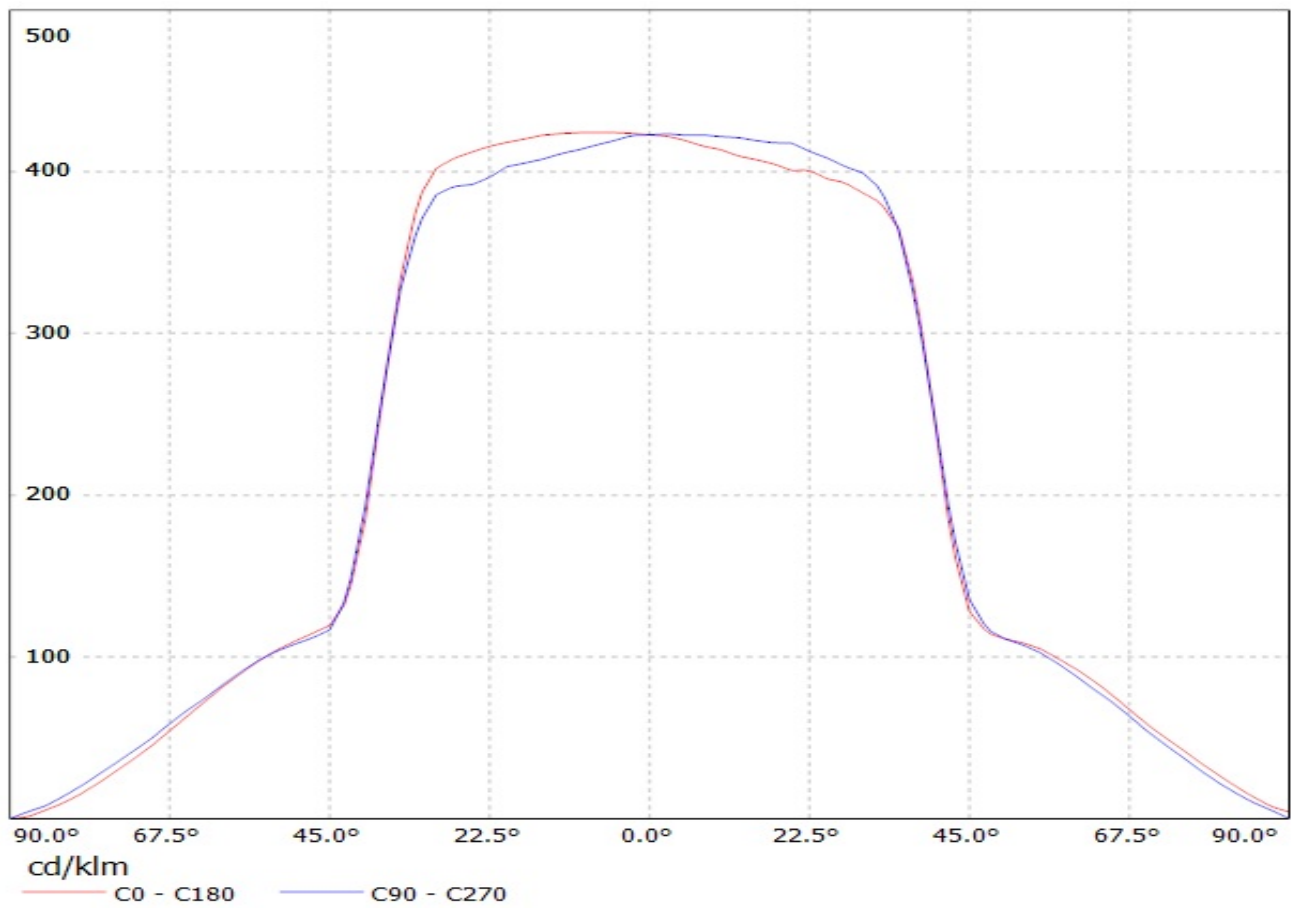
Luminaire: Ledil Oy C12469_LISA2-R-PIN (Luxeon Rebel 61lm @ 250mA) Efficiency=88%
Lamps: 1 x Luxeon Rebel 61lm @ 250mA (LXM8-PW30) CCT=2872K P=0,75W I=250mA



Luminaire: LEDiL Oy C12469_LISA2-R-PIN (DURIS_P5) Eff: 83%
Lamps: 1 x OSRAM_DURIS_P5_(GWDASPA1.EC-HPHR-5R8T-1)_26.9258lm@100mA_P=0.29332W_I=100.2mA

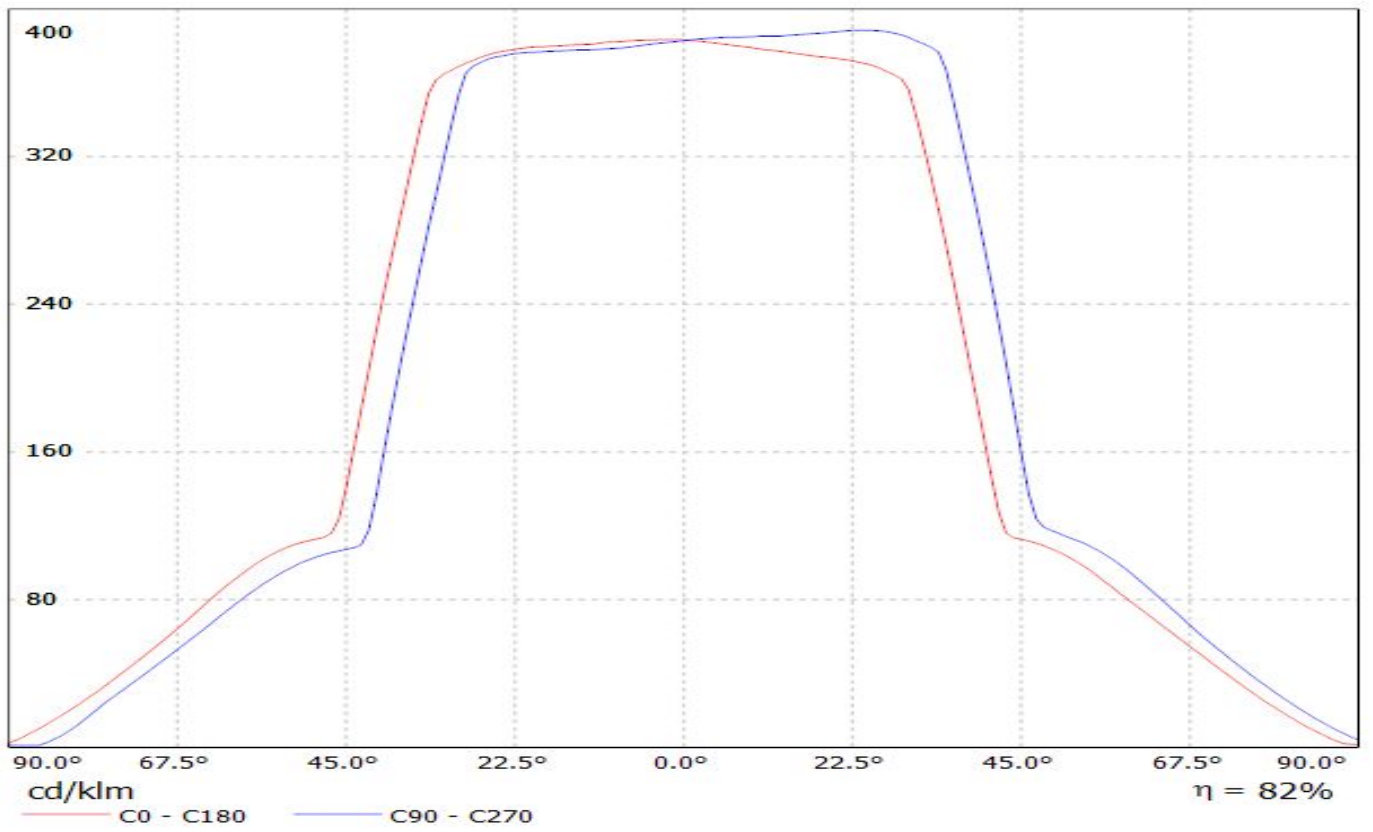


Luminaire: Ledil Oy C12469_LISA2-R-PIN_(Seoul-Z5) Efficiency=85%
Lamps: 1 x Seoul Z5 (SZW05AOB) 82lm@250mA CCT=6000K P=0.8W I=250mA

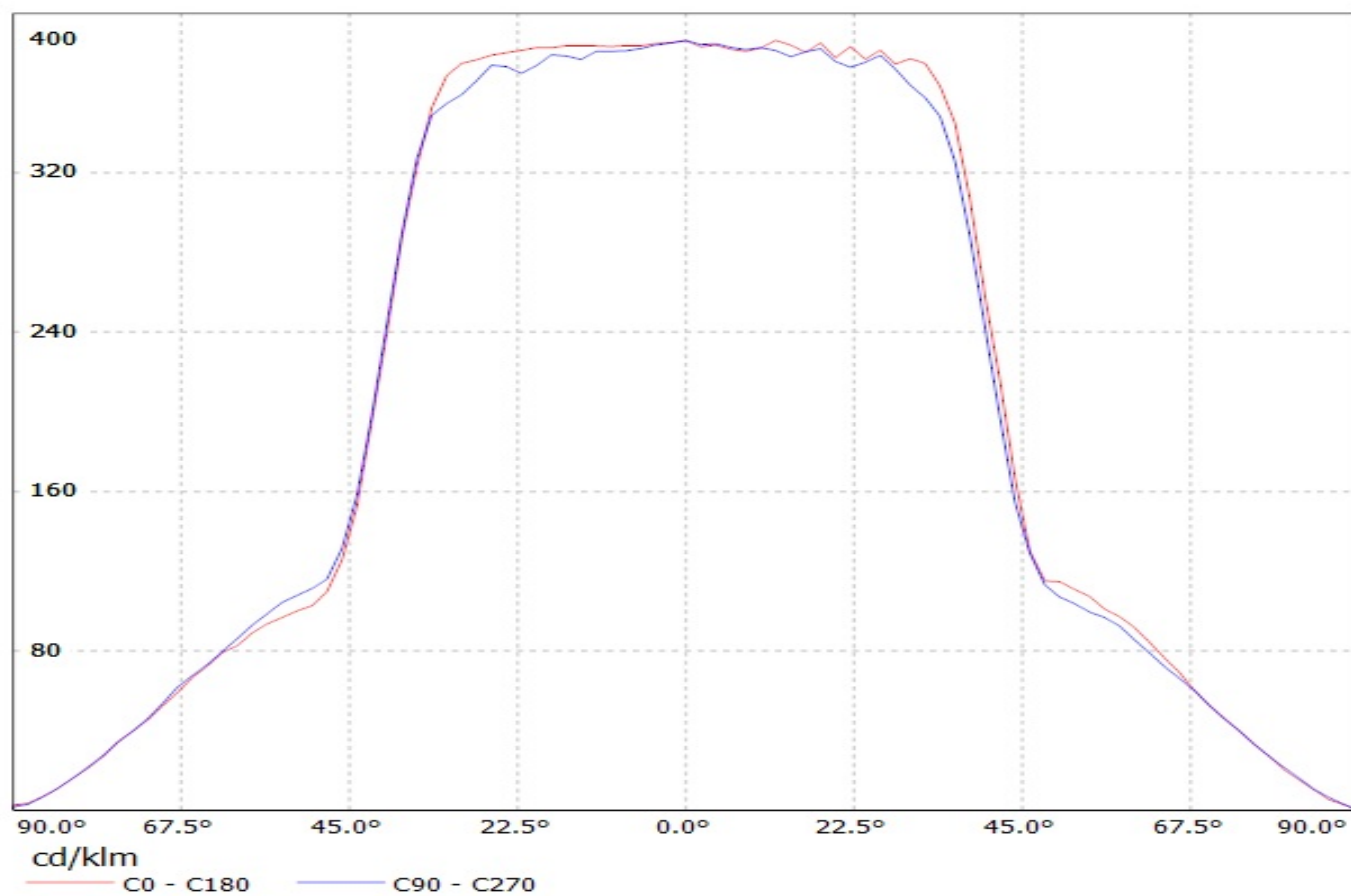


LEDiL Oy C12469_LISA2-R-PIN_(LUXEON_T) Eff.81.8% / LDC (Linear)

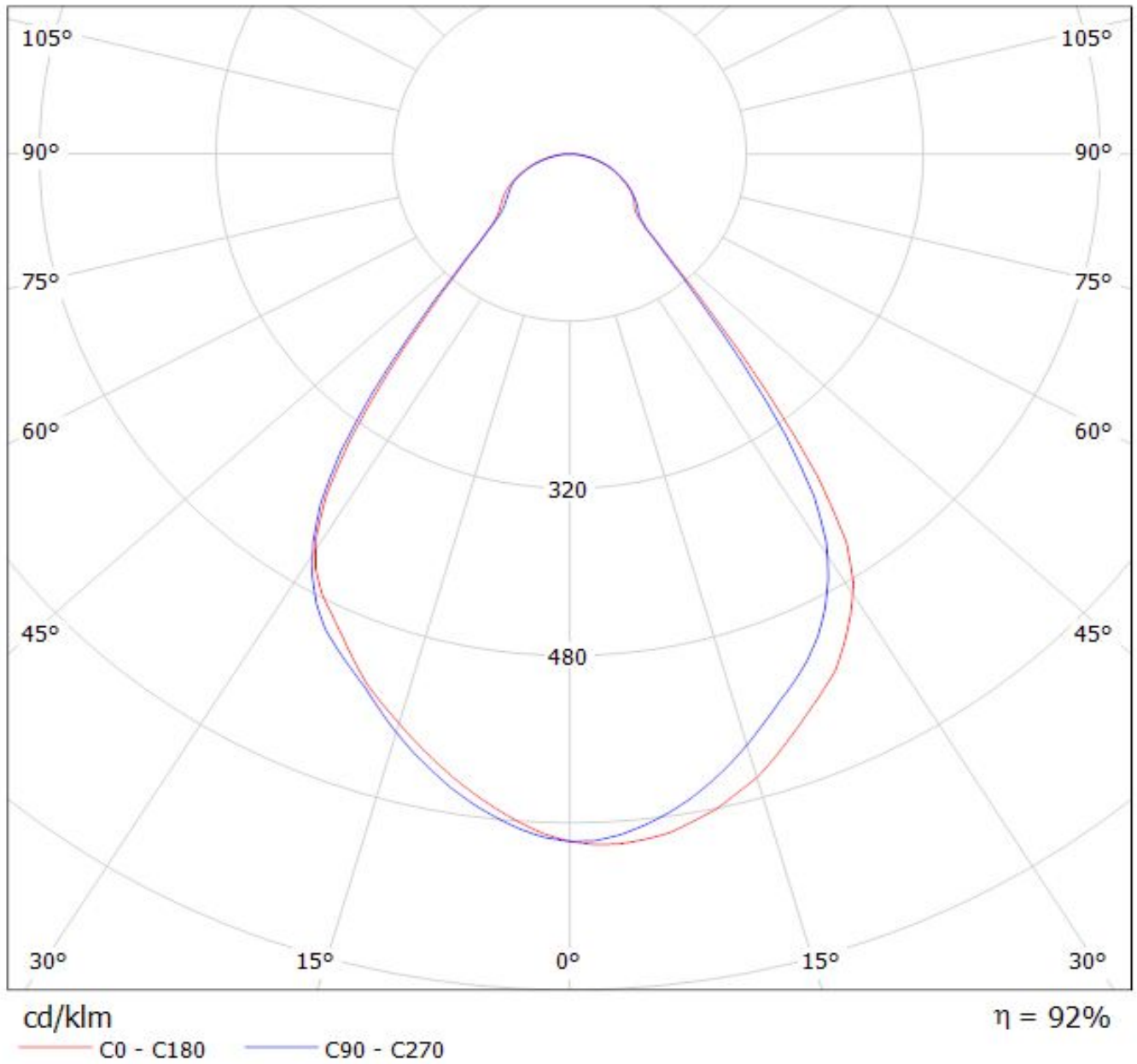
Luminaire: LEDiL Oy C12469_LISA2-R-PIN_(LUXEON_T) Eff.81.8%
Lamps: 1 x LUXEON T (74lm@250mA)



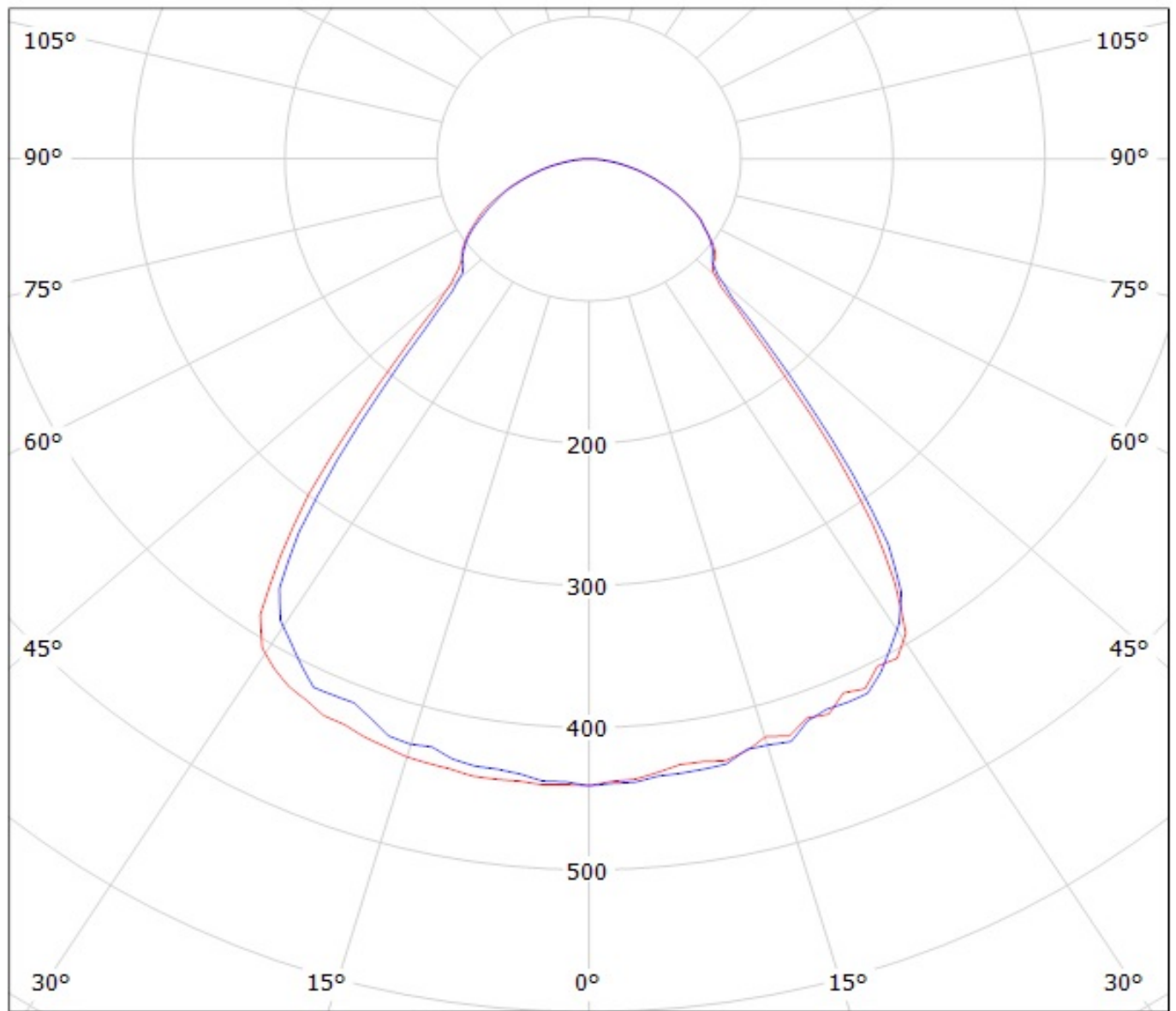
Luminaire: Ledil Oy C12469_LISA2-R-PIN (Cree XP-G 66lm @ 250mA) Efficiency=89%
Lamps: 1 x Cree XP-G 66lm @ 250mA CCT=3270K P=0,75W I=250mA



Luminaire: LEDiL C12469_LISA2-R-PIN_(SSL80) Eff.92%
Lamps: 1 x Osram Oslon SSL80 (79lm@250mA)



Luminaire: Ledil Oy C12469_LISA2-R-PIN (Luxeon Rebel 61lm @ 250mA) Efficiency=88%
Lamps: 1 x Luxeon Rebel 61lm @ 250mA (LXM8-PW30) CCT=2872K P=0,75W I=250mA

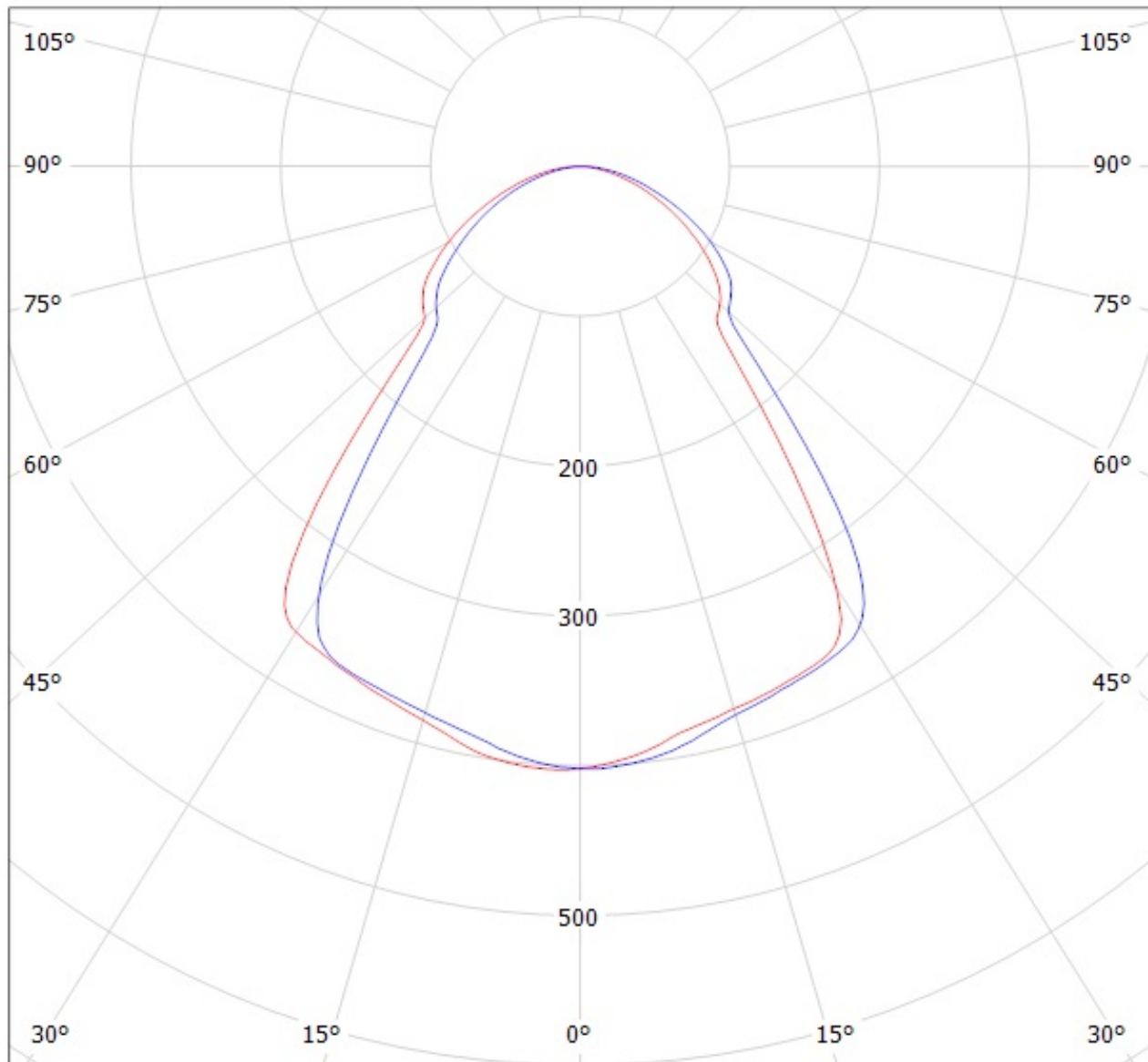


cd/klm

— C0 - C180 — C90 - C270

Luminaire: LEDiL Oy C12469_LISA2-R-PIN_(DURIS_P5) Eff: 83%

Lamps: 1 x OSRAM_DURIS_P5_(GWDASPA1.EC-HPHR-5R8T-1)_26.9258lm@100mA_P=0.29332W_I=100.2mA

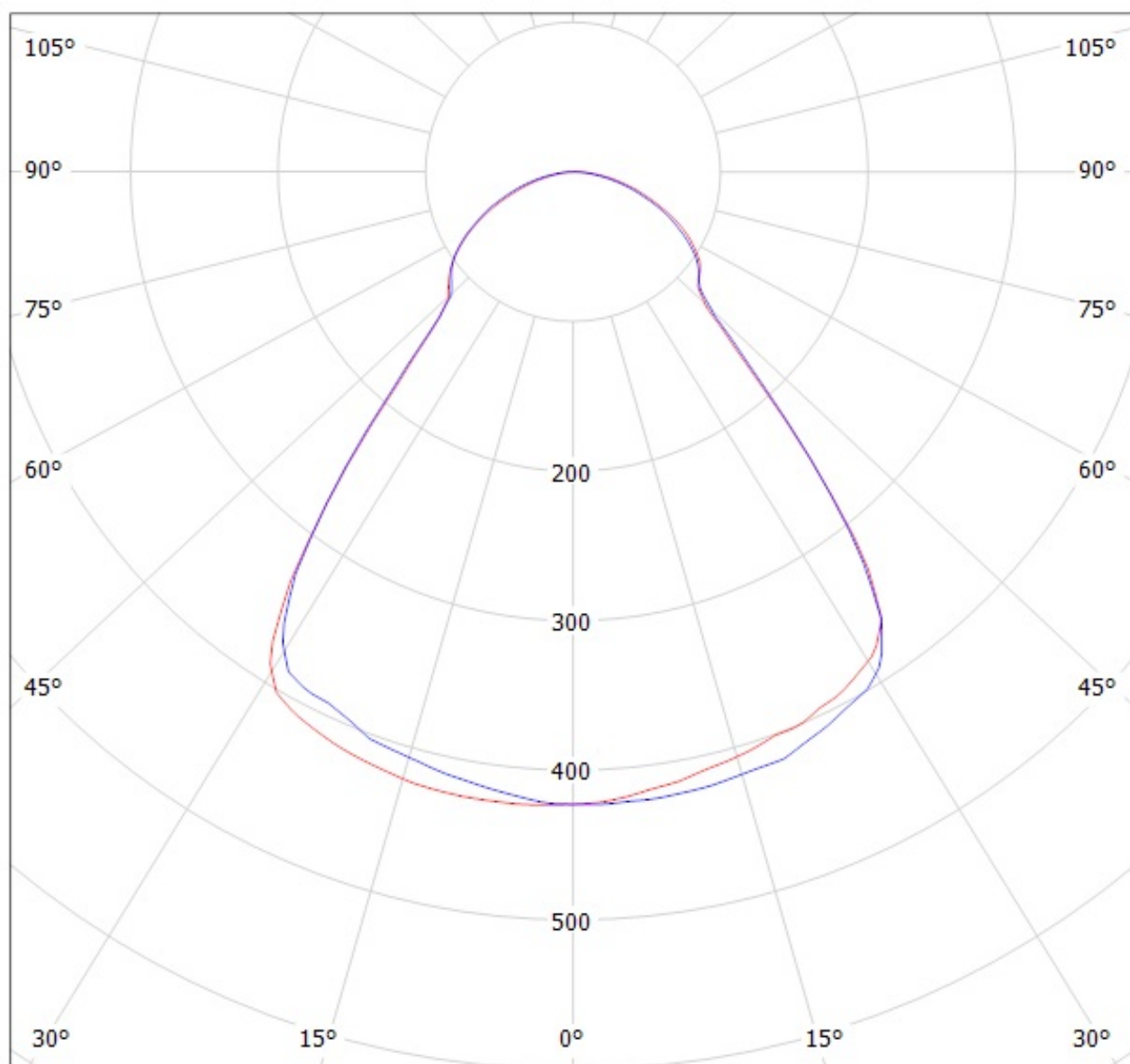


cd/klm

— C0 - C180

— C90 - C270

Luminaire: Ledil Oy C12469_LISA2-R-PIN_(Seoul-Z5) Efficiency=85%
Lamps: 1 x Seoul Z5 (SZW05AOB) 82lm@250mA CCT=6000K P=0.8W I=250mA



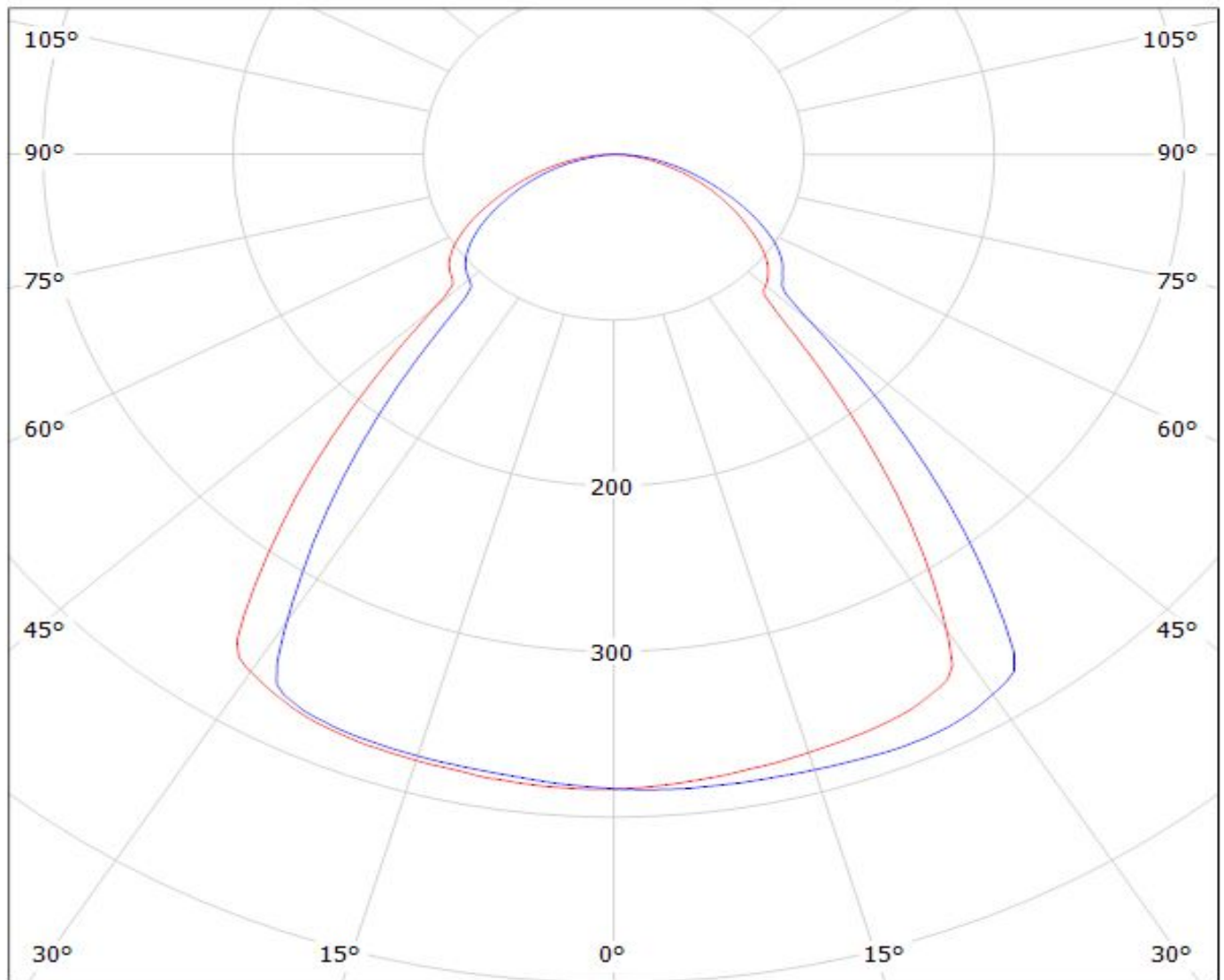
cd/klm

— C0 - C180 — C90 - C270

LEDiL Oy C12469_LISA2-R-PIN_(LUXEON_T) Eff.81.8% / LDC (Polar)

Luminaire: LEDiL Oy C12469_LISA2-R-PIN_(LUXEON_T) Eff.81.8%

Lamps: 1 x LUXEON T (74lm@250mA)



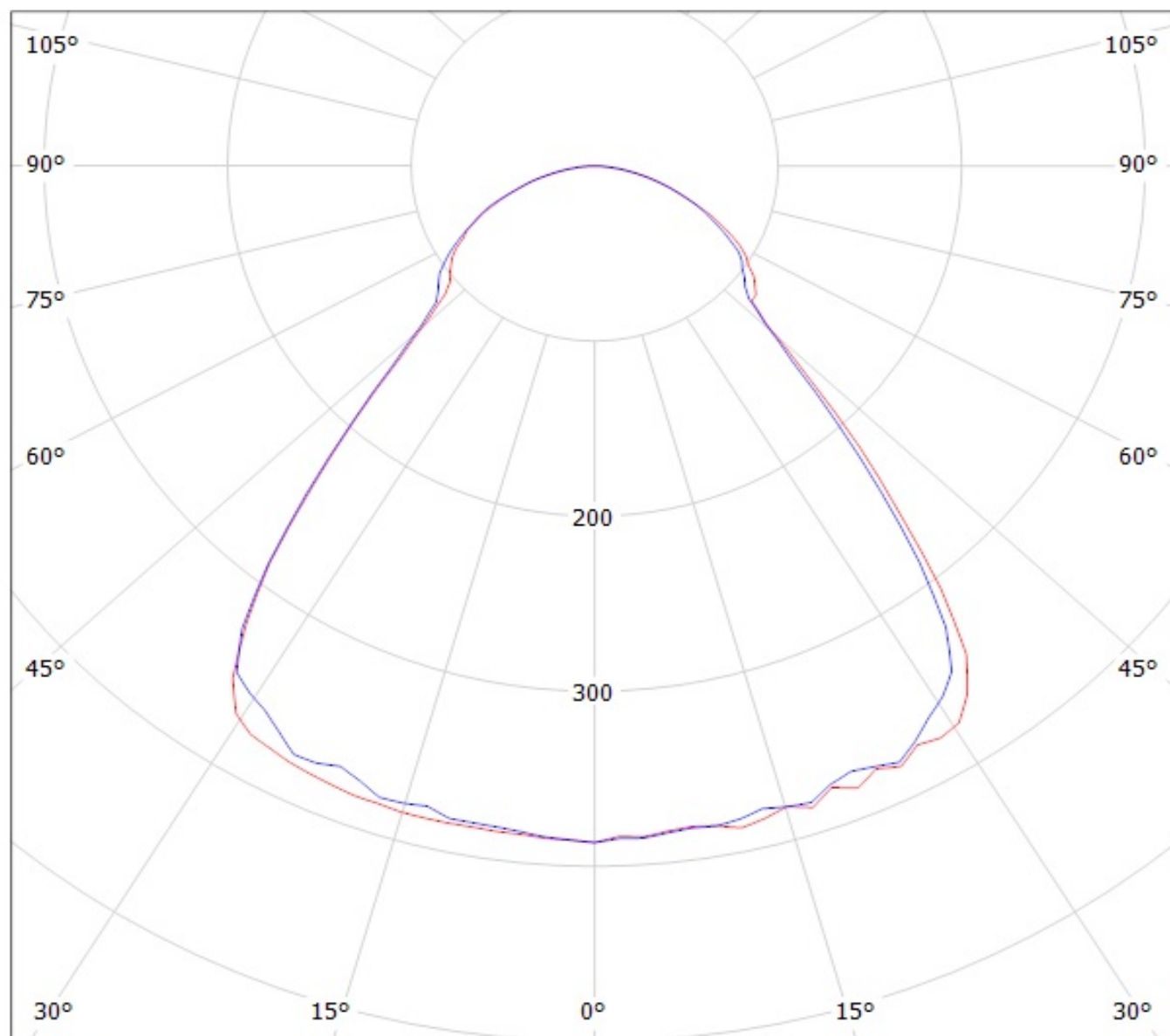
cd/klm

— C0 - C180

— C90 - C270

$\eta = 82\%$

Luminaire: Ledil Oy C12469_LISA2-R-PIN (Cree XP-G 66lm @ 250mA) Efficiency=89%
Lamps: 1 x Cree XP-G 66lm @ 250mA CCT=3270K P=0,75W I=250mA



cd/klm

— C0 - C180

— C90 - C270

NOTE: The typical divergence will be changed by different color, chip size and chip position tolerance. The typical total divergence is the full angle measured where the luminous intensity is half of the peak value.