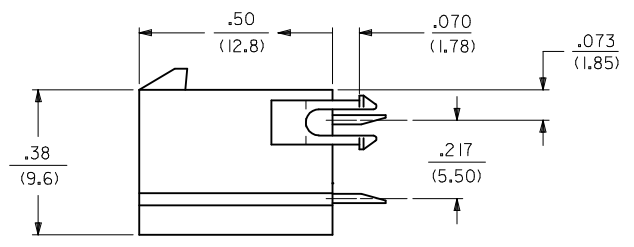
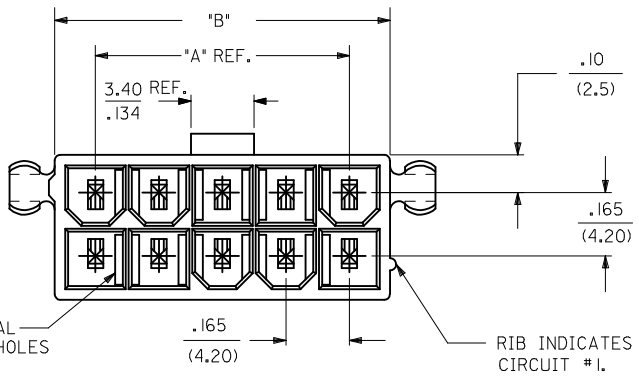


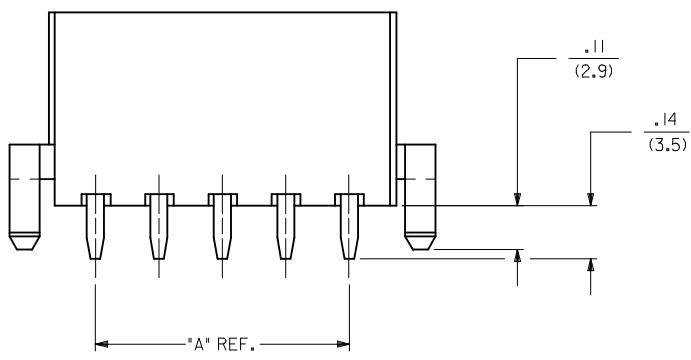
RECOMMENDED HOLE LAYOUT FOR
 .070/(1.78) MAX. THICK P. C. BOARD

| CIRCUIT SIZE | DIM. "A" | DIM. "B" | DIM. "C" |
|--------------|----------------|----------------|------------------|
| 2 | — | .21 (5.4) | .370 (9.40) |
| 4 | .17 (4.2) | .38 (9.6) | .535 (13.60) |
| 6 | .33 (8.4) | .54 (13.8) | .701 (17.80) |
| 8 | .50 (12.6) | .71 (18.0) | .866 (22.00) |
| 10 | .66 (16.8) | .87 (22.2) | 1.031 (26.20) |
| 12 | .83 (21.0) | 1.04 (26.4) | 1.197 (30.40) |
| 14 | .99 (25.2) | 1.20 (30.6) | 1.362 (34.60) |
| 16 | 1.16 (29.4) | 1.37 (34.8) | 1.528 (38.80) |
| 18 | 1.32 (33.6) | 1.54 (39.0) | 1.693 (43.00) |
| 20 | 1.49 (37.8) | 1.70 (43.2) | 1.858 (47.20) |
| 22 | 1.65 (42.0) | 1.87 (47.4) | 2.024 (51.40) |
| 24 | 1.82 (46.2) | 2.03 (51.6) | 2.189 (55.60) |



NOTES:

- HOUSING MATERIAL:
 NYLON 6/6, U.L. 94V-2, COLOR: NATURAL.
 NYLON 6/6, U.L. 94V-0, COLOR: NATURAL.
- TERMINAL MATERIAL: COPPER ALLOY
- TERMINAL PLATING:
 1 - .000100/(.00254) MIN. BRIGHT TIN OVER .000050/(.00127) MIN. NICKEL OVERALL
 2 - .000030/(.00080) MIN. SELECT GOLD, .000100/(.00254) MIN. MATTE TIN OVER .000050/(.00127) MIN. NICKEL OVERALL
- PART IS DESIGNED IN METRIC.
- PART MATES WITH MINI-FIT JR. RECEPTACLE NO. 5557.
- PRODUCT SPECIFICATION: PS-45750-001
- PARTS ARE NOT TO BE MATED OR UN-MATED WHILE CIRCUITS ARE LIVE.
- PARTS TO HAVE "HCS+" MARKING
- PACKAGING SPECIFICATION: PK-5566-001.
- PART CONFORMS TO CLASS B OF COSMETIC SPECIFICATION PS-45499-002.



| | | | | | | |
|--|--|---|-----------------|--|--------------------------|------------------------|
| NOTE 9: CHG PKG. SPEC. EC NO: UCP2009-0751 DRWN: BWIRKUS 2008/09/29 CHKD: BWIRKUS 2008/09/29 APPR: BWIRKUS 2008/10/02 | QUALITY SYMBOLS | GENERAL TOLERANCES (UNLESS SPECIFIED) | DIMENSION STYLE | SCALE | DESIGN UNITS | THIRD ANGLE PROJECTION |
| | $\nabla=0$ $\nabla=0$ | mm INCH | IN/MM | METRIC | | |
| | | 4 PLACES ± --- ± --- | DRAWN BY DATE | TITLE | MOLEX MOLEX INCORPORATED | |
| | | 3 PLACES ± --- ± .010 | CHECKED BY DATE | VERTICAL HEADER ASSEMBLY DUAL ROW MINI-FIT PLUS HCS SERIES | | |
| | 2 PLACES ± 0.25 ± .015 | APPROVED BY DATE | SD-46015-001 | | | |
| | 1 PLACE ± 0.38 ± --- | MATERIAL NO. | SEE TABLE | | | |
| | ANGULAR ± 1/2° | DOCUMENT NO. | SD-46015-001 | | | |
| | DRAFT WHERE APPLICABLE MUST REMAIN WITHIN DIMENSIONS | THIS DRAWING CONTAINS INFORMATION THAT IS PROPRIETARY TO MOLEX INCORPORATED AND SHOULD NOT BE USED WITHOUT WRITTEN PERMISSION | | | | |

| ITEM NO. | CKT SIZE | HOUSING MATERIAL | DRAIN HOLES | PEGS | PLATING |
|------------|----------|------------------|-------------|------|---------|
| 46015-0200 | 2 | V-0 | YES | NO | TIN |
| 46015-0201 | | | | YES | |
| 46015-0202 | | | NO | NO | |
| 46015-0203 | | | | YES | |
| 46015-0204 | V-2 | YES | NO | TIN | |
| 46015-0205 | | | YES | | |
| 46015-0206 | | NO | NO | | |
| 46015-0207 | | | YES | | |
| 46015-0208 | V-0 | YES | YES | GOLD | |
| 46015-0400 | 4 | V-0 | YES | NO | TIN |
| 46015-0401 | | | YES | YES | |
| 46015-0402 | | | NO | NO | |
| 46015-0403 | | | | YES | |
| 46015-0404 | V-2 | YES | NO | TIN | |
| 46015-0405 | | | YES | | |
| 46015-0406 | | NO | NO | | |
| 46015-0407 | | | YES | | |
| 46015-0408 | V-0 | YES | YES | GOLD | |
| 46015-0600 | 6 | V-0 | YES | NO | TIN |
| 46015-0601 | | | YES | YES | |
| 46015-0602 | | | NO | NO | |
| 46015-0603 | | | | YES | |
| 46015-0604 | V-2 | YES | NO | TIN | |
| 46015-0605 | | | YES | | |
| 46015-0606 | | NO | NO | | |
| 46015-0607 | | | YES | | |
| 46015-0608 | V-0 | YES | YES | GOLD | |
| 46015-0800 | 8 | V-0 | YES | NO | TIN |
| 46015-0801 | | | YES | YES | |
| 46015-0802 | | | NO | NO | |
| 46015-0803 | | | | YES | |
| 46015-0804 | V-2 | YES | NO | TIN | |
| 46015-0805 | | | YES | | |
| 46015-0806 | | NO | NO | | |
| 46015-0807 | | | YES | | |
| 46015-0808 | V-0 | YES | YES | GOLD | |
| 46015-1000 | 10 | V-0 | YES | NO | TIN |
| 46015-1001 | | | YES | YES | |
| 46015-1002 | | | NO | NO | |
| 46015-1003 | | | | YES | |
| 46015-1004 | V-2 | YES | NO | TIN | |
| 46015-1005 | | | YES | | |
| 46015-1006 | | NO | NO | | |
| 46015-1007 | | | YES | | |
| 46015-1008 | V-0 | YES | YES | GOLD | |
| 46015-1200 | 12 | V-0 | YES | NO | TIN |
| 46015-1201 | | | YES | YES | |
| 46015-1202 | | | NO | NO | |
| 46015-1203 | | | | YES | |
| 46015-1204 | V-2 | YES | NO | TIN | |
| 46015-1205 | | | YES | | |
| 46015-1206 | | NO | NO | | |
| 46015-1207 | | | YES | | |
| 46015-1208 | V-0 | YES | YES | GOLD | |

| ITEM NO. | CKT SIZE | HOUSING MATERIAL | DRAIN HOLES | PEGS | PLATING |
|------------|----------|------------------|-------------|------|---------|
| 46015-1400 | 14 | V-0 | YES | NO | TIN |
| 46015-1401 | | | | YES | |
| 46015-1402 | | | NO | NO | |
| 46015-1403 | | | | YES | |
| 46015-1404 | V-2 | YES | NO | TIN | |
| 46015-1405 | | | YES | | |
| 46015-1406 | | NO | NO | | |
| 46015-1407 | | | YES | | |
| 46015-1408 | V-0 | YES | YES | GOLD | |
| 46015-1600 | 16 | V-0 | YES | NO | TIN |
| 46015-1601 | | | YES | YES | |
| 46015-1602 | | | NO | NO | |
| 46015-1603 | | | | YES | |
| 46015-1604 | V-2 | YES | NO | TIN | |
| 46015-1605 | | | YES | | |
| 46015-1606 | | NO | NO | | |
| 46015-1607 | | | YES | | |
| 46015-1608 | V-0 | YES | YES | GOLD | |
| 46015-1800 | 18 | V-0 | YES | NO | TIN |
| 46015-1801 | | | YES | YES | |
| 46015-1802 | | | NO | NO | |
| 46015-1803 | | | | YES | |
| 46015-1804 | V-2 | YES | NO | TIN | |
| 46015-1805 | | | YES | | |
| 46015-1806 | | NO | NO | | |
| 46015-1807 | | | YES | | |
| 46015-1808 | V-0 | YES | YES | GOLD | |
| 46015-2000 | 20 | V-0 | YES | NO | TIN |
| 46015-2001 | | | YES | YES | |
| 46015-2002 | | | NO | NO | |
| 46015-2003 | | | | YES | |
| 46015-2004 | V-2 | YES | NO | TIN | |
| 46015-2005 | | | YES | | |
| 46015-2006 | | NO | NO | | |
| 46015-2007 | | | YES | | |
| 46015-2008 | V-0 | YES | YES | GOLD | |
| 46015-2200 | 22 | V-0 | YES | NO | TIN |
| 46015-2201 | | | YES | YES | |
| 46015-2202 | | | NO | NO | |
| 46015-2203 | | | | YES | |
| 46015-2204 | V-2 | YES | NO | TIN | |
| 46015-2205 | | | YES | | |
| 46015-2206 | | NO | NO | | |
| 46015-2207 | | | YES | | |
| 46015-2208 | V-0 | YES | YES | GOLD | |

| ITEM NO. | CKT SIZE | HOUSING MATERIAL | DRAIN HOLES | PEGS | PLATING |
|------------|----------|------------------|-------------|------|---------|
| 46015-2400 | 24 | V-0 | YES | NO | TIN |
| 46015-2401 | | | | YES | |
| 46015-2402 | | | NO | NO | |
| 46015-2403 | | | | YES | |
| 46015-2404 | V-2 | YES | NO | TIN | |
| 46015-2405 | | | YES | | |
| 46015-2406 | | NO | NO | | |
| 46015-2407 | | | YES | | |
| 46015-2408 | V-0 | YES | YES | GOLD | |

| | | | | | | | | | | | |
|--|-------------------------------|--|------------|--------------------------|--------------------|---|------------------------------|------------------------|--|--|--|
| SEE SHEET 1 EC NO: UCP2009-0751 DRWN: BWRKUS 2008/09/29 CHKD: BWRKUS 2008/09/29 APPR: BWRKUS 2008/10/02 REV: | QUALITY SYMBOLS ▽=0 ▽=0 | GENERAL TOLERANCES (UNLESS SPECIFIED) | | DIMENSION STYLE IN/MM | | SCALE 1:1 | DESIGN UNITS METRIC | THIRD ANGLE PROJECTION | | | |
| | | 4 PLACES ± --- INCH 3 PLACES ± --- ±.010 2 PLACES ± 0.25 ±.015 1 PLACE ± 0.38 ± --- | mm INCH | DRAWN BY TGREGORI | DATE 2006/04/27 | TITLE VERTICAL HEADER ASSEMBLY DUAL ROW MINI-FIT PLUS HCS SERIES | | | | | |
| | | ANGULAR ±1/2° | | CHECKED BY JCOMERC I | DATE | APPROVED BY JCOMERC I | | | | | |
| | | DRAFT WHERE APPLICABLE MUST REMAIN WITHIN DIMENSIONS | | SEE TABLE | | MATERIAL NO. JCOMERC I | DOCUMENT NO. SD-46015-001 | SHEET NO. 2 OF 2 | | | |