

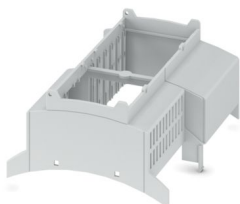
# BC 107,6 OT 1120C KMGY - Upper housing part



1646761

<https://www.phoenixcontact.com/in/products/1646761>

Please be informed that the data shown in this PDF document is generated from our online catalog. Please find the complete data in the user documentation. Our general terms of use for downloads are valid.



DIN rail housing for use in distribution boards in accordance with DIN 43880, modular upper housing part, width: 107.6 mm, height: 89.7 mm, depth: 54.85 mm, color: light gray (similar RAL 7035)

## Your advantages

- Coordinated housing and connection system for faster device development
- Individual online configuration for diverse applications in building automation
- Variety of connection technology
- Can be mounted on the DIN rail or the wall
- With DIN-rail-mountable bus connector and power connector system as an option
- Tool-free mounting
- Available in overall widths from 1 ... 9 width units (17.8 mm ... 161.6 mm)
- Compliant with DIN EN 43880

## Commercial data

Item number	1646761
Packing unit	10 pc
Minimum order quantity	500 pc
Product key	ACHBAB
GTIN	4067923181526
Weight per piece (including packing)	50.89 g
Weight per piece (excluding packing)	52 g
Country of origin	PL

# BC 107,6 OT 1120C KMGY - Upper housing part



1646761

<https://www.phoenixcontact.com/in/products/1646761>

## Technical data

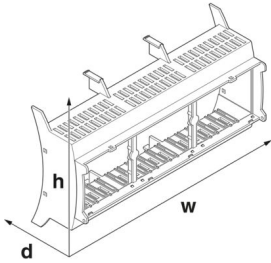
### Notes

Assembly note	Please observe the application note in the download area.
---------------	-----------------------------------------------------------

### Product properties

Product type	Upper housing part
Housing type	DIN rail housing for use in distribution boards in accordance with DIN 43880
Housing series	BC
Product family	BC 107,6..
Max. number of positions	64 (pitch: 2.5 mm) 48 (pitch: 3.5 mm) 40 (pitch: 5 mm) 24 (pitch: 7.5 mm)
Type	modular upper housing part
Ventilation openings present	yes

### Dimensions

Dimensional drawing	
Width	107.6 mm
Height	89.7 mm
Depth	54.85 mm
Horizontal pitch	6 Div.

### PCB design

PCB thickness	1.4 mm ... 1.8 mm
---------------	-------------------

### Material specifications

Color (Housing)	light gray (RAL 7035)
Flammability rating according to UL 94	V0
Housing material	PC
Surface characteristics	untreated

### Environmental and real-life conditions

#### Ambient conditions

Max. IP code to attain	IP20
------------------------	------

# BC 107,6 OT 1120C KMGY - Upper housing part



1646761

<https://www.phoenixcontact.com/in/products/1646761>

Ambient temperature (operation)	-40 °C ... 105 °C (depending on power dissipation)
Ambient temperature (storage/transport)	-40 °C ... 70 °C
Ambient temperature (assembly)	-5 °C ... 100 °C
Relative humidity (storage/transport)	95 %

## PCB data

Number of PCB holders	12
Type of PCB mount	Latching
Thickness of the PCB	1.4 mm ... 1.8 mm

## Mounting

Mounting type	Snap in
---------------	---------

## Packaging specifications

Type of packaging	packed in cardboard
Outer packaging type	Carton

# BC 107,6 OT 1120C KMGY - Upper housing part

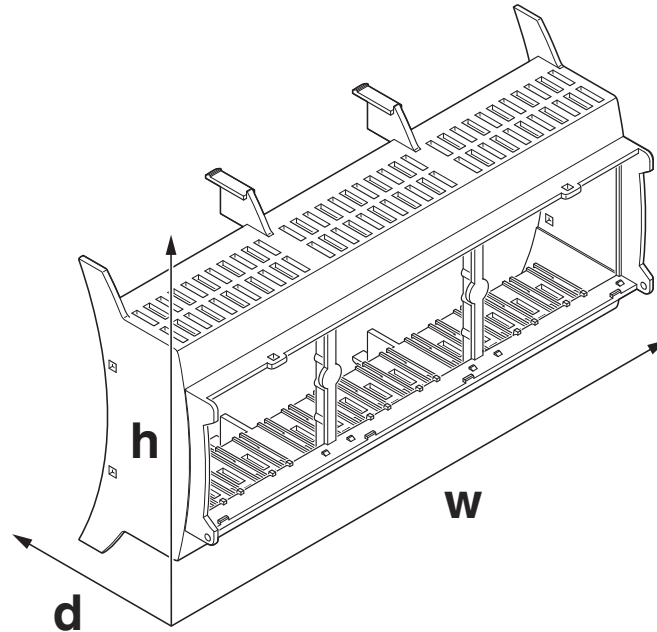
1646761

<https://www.phoenixcontact.com/in/products/1646761>



## Drawings

Dimensional drawing



Schematic figure for illustrating the item dimensions. The figure is not of the desired product. For further details, refer to the product drawings in the "Downloads" tab.


# BC 107,6 OT 1120C KMGY - Upper housing part



1646761

<https://www.phoenixcontact.com/in/products/1646761>

## Approvals

 To download certificates, visit the product detail page: <https://www.phoenixcontact.com/in/products/1646761>



**UL Recognized**

Approval ID: E240868

# BC 107,6 OT 1120C KMGY - Upper housing part



1646761

<https://www.phoenixcontact.com/in/products/1646761>

## Classifications

### ECLASS

ECLASS-11.0	27182702
ECLASS-13.0	27190603

### ETIM

ETIM 9.0	EC002779
----------	----------

# BC 107,6 OT 1120C KMGY - Upper housing part



1646761

<https://www.phoenixcontact.com/in/products/1646761>

## Environmental product compliance

EU RoHS	
Fulfills EU RoHS substance requirements	Yes, No exemptions
China RoHS	
Environment friendly use period (EFUP)	EFUP-E
	No hazardous substances above the limits
EU REACH SVHC	
REACH candidate substance (CAS No.)	No substance above 0.1 wt%

# BC 107,6 OT 1120C KMGY - Upper housing part



1646761

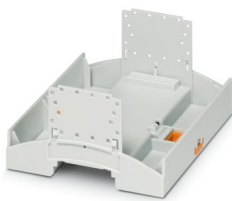
<https://www.phoenixcontact.com/in/products/1646761>

## Mandatory accessories

### BC 107,6 UT HBUS KMGY - Mounting base housing

2202951

<https://www.phoenixcontact.com/in/products/2202951>



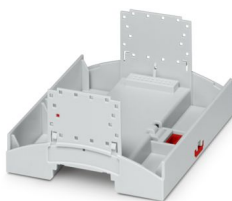
DIN rail housing for use in distribution boards in accordance with DIN 43880, Lower housing part with base latch, width: 107.6 mm, height: 89.7 mm, depth: 48.9 mm, color: light gray (similar RAL 7035), cross connection: DIN rail connector (optional), number of positions cross connector: 16

---

### BC 107,6 UT HBUS KMGY/RD - Mounting base housing

2203517

<https://www.phoenixcontact.com/in/products/2203517>



DIN rail housing for use in distribution boards in accordance with DIN 43880, Lower housing part with base latch, width: 107.6 mm, height: 89.7 mm, depth: 48.9 mm, color: light gray (similar RAL 7035), cross connection: DIN rail connector (optional), number of positions cross connector: 16



## BC 107,6 OT 1120C KMGY - Upper housing part

1646761

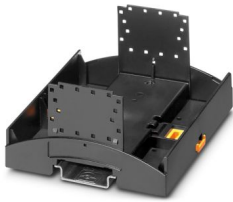
<https://www.phoenixcontact.com/in/products/1646761>



## BC 107,6 UT HBUS FS BK VPE80 - Mounting base housing

1006953

<https://www.phoenixcontact.com/in/products/1006953>



DIN rail housing for use in distribution boards in accordance with DIN 43880, Lower housing part with base latch, width: 107.6 mm, height: 89.7 mm, depth: 48.9 mm, color: black (similar RAL 9005), cross connection: DIN rail connector (optional), number of positions cross connector: 16

---

## BC 107,6 UT HBUS GY7021 - Mounting base housing

1385674

<https://www.phoenixcontact.com/in/products/1385674>



DIN rail housing for use in distribution boards in accordance with DIN 43880, Lower housing part with base latch, width: 107.6 mm, height: 89.7 mm, depth: 48.9 mm, color: black gray (similar RAL 7021), cross connection: DIN rail connector (optional), number of positions cross connector: 16

## BC 107,6 OT 1120C KMGY - Upper housing part

1646761

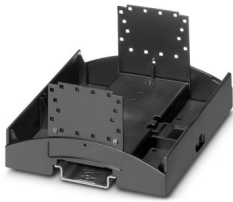
<https://www.phoenixcontact.com/in/products/1646761>



## BC 107,6 UT HBUS GY W/ORG CLP - Mounting base housing

1749649

<https://www.phoenixcontact.com/in/products/1749649>



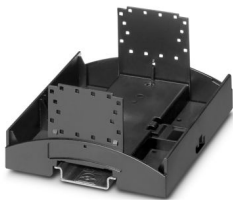
DIN rail housing for use in distribution boards in accordance with DIN 43880, Lower housing part without base latch, width: 107.6 mm, height: 89.7 mm, depth: 48.9 mm, color: gray (similar RAL 7042), cross connection: DIN rail connector (optional), number of positions cross connector: 16

---

## BC 107,6 UT HBUS BK W/ORG CLP - Mounting base housing

2203815

<https://www.phoenixcontact.com/in/products/2203815>



DIN rail housing for use in distribution boards in accordance with DIN 43880, Lower housing part without base latch, width: 107.6 mm, height: 89.7 mm, depth: 48.9 mm, color: black (similar RAL 9005), cross connection: DIN rail connector (optional), number of positions cross connector: 16

## BC 107,6 OT 1120C KMGY - Upper housing part

1646761

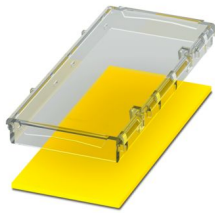
<https://www.phoenixcontact.com/in/products/1646761>



## BC 107,6 DKL S TRANS/YE - Housing cover

1163754

<https://www.phoenixcontact.com/in/products/1163754>



DIN rail housing for use in distribution boards in accordance with DIN 43880, transparent hinged cover, can be sealed, including insertion plate, width: 107.6 mm, height: 45 mm, depth: 8 mm, color: yellow (similar RAL 1018)

---

## BC 107,6 DKL R D2,4 TCG KMGY - Housing cover with touch display

1335858

<https://www.phoenixcontact.com/in/products/1335858>



DIN rail housing for use in distribution boards in accordance with DIN 43880, Latching cover (non-detachable), integrated capacitive 2.4" touch display, resolution: 320 x 240 Pixel(s), interface: 4-wire SPI, width: 107.6 mm, height: 45 mm, depth: 13.5 mm

## BC 107,6 OT 1120C KMGY - Upper housing part

1646761

<https://www.phoenixcontact.com/in/products/1646761>



## BC 107,6 DKL R D2,4 KPG KMGY - Housing cover with touch display

1335860

<https://www.phoenixcontact.com/in/products/1335860>



DIN rail housing for use in distribution boards in accordance with DIN 43880, Latching cover (non-detachable), integrated capacitive 2.4" touch display, resolution: 320 x 240 Pixel(s), interface: 4-wire SPI, width: 107.6 mm, height: 45 mm, depth: 13.5 mm

---

## BC 107,6 DKL R D2,4 TCG BK - Housing cover with touch display

1335861

<https://www.phoenixcontact.com/in/products/1335861>



DIN rail housing for use in distribution boards in accordance with DIN 43880, Latching cover (non-detachable), integrated capacitive 2.4" touch display, resolution: 320 x 240 Pixel(s), interface: 4-wire SPI, width: 107.6 mm, height: 45 mm, depth: 13.5 mm

## BC 107,6 OT 1120C KMGY - Upper housing part

1646761

<https://www.phoenixcontact.com/in/products/1646761>



## BC 107,6 DKL R D2,4 TCG KMGY VPE1 - Housing cover with touch display

1335865

<https://www.phoenixcontact.com/in/products/1335865>



DIN rail housing for use in distribution boards in accordance with DIN 43880, Latching cover (non-detachable), integrated capacitive 2.4" touch display, resolution: 320 x 240 Pixel(s), interface: 4-wire SPI, width: 107.6 mm, height: 45 mm, depth: 13.5 mm

---

## BC 107,6 DKL R D2,4 KPG BK - Housing cover with touch display

1684628

<https://www.phoenixcontact.com/in/products/1684628>



DIN rail housing for use in distribution boards in accordance with DIN 43880, Latching cover (non-detachable), integrated capacitive 2.4" touch display, interface: 4-wire SPI, width: 107.6 mm, height: 45 mm, depth: 13.5 mm

## BC 107,6 OT 1120C KMGY - Upper housing part

1646761

<https://www.phoenixcontact.com/in/products/1646761>



## BC 107,6 DKL S KMGY - Housing cover

2200046

<https://www.phoenixcontact.com/in/products/2200046>



DIN rail housing for use in distribution boards in accordance with DIN 43880, Hinged cover, can be sealed, width: 107.6 mm, height: 45 mm, depth: 8 mm, color: light gray (similar RAL 7035)

---

## BC 107,6 DKL R BK - Housing cover

2200722

<https://www.phoenixcontact.com/in/products/2200722>



DIN rail housing for use in distribution boards in accordance with DIN 43880, Latching cover (non-detachable), width: 107.6 mm, height: 45 mm, depth: 8 mm, color: black (similar RAL 9005)

## BC 107,6 OT 1120C KMGY - Upper housing part

1646761

<https://www.phoenixcontact.com/in/products/1646761>



## BC 107,6 DKL S TRANS WOP - Housing cover

2202968

<https://www.phoenixcontact.com/in/products/2202968>



DIN rail housing for use in distribution boards in accordance with DIN 43880, transparent hinged cover, can be sealed, without insertion plate, width: 107.6 mm, height: 45 mm, depth: 8 mm, color: transparent

---

## BC 107,6 DKL R KMGY - Housing cover

2896173

<https://www.phoenixcontact.com/in/products/2896173>



DIN rail housing for use in distribution boards in accordance with DIN 43880, Latching cover (non-detachable), width: 107.6 mm, height: 45 mm, depth: 8 mm, color: light gray (similar RAL 7035)

# BC 107,6 OT 1120C KMGY - Upper housing part



1646761

<https://www.phoenixcontact.com/in/products/1646761>

## HBUS8 107,6-8P-1S BK - DIN rail bus connectors

1252173

<https://www.phoenixcontact.com/in/products/1252173>



DIN rail connector, color: black, nominal current: 3 A (per contact), rated voltage (III/2): 100 V, number of positions: 8, product range: BC 107,6.., pitch: 2.54 mm, mounting: DIN rail mounting, locking: without

---

## HBUS 107,6-16P-1S BK - DIN rail bus connectors

2896306

<https://www.phoenixcontact.com/in/products/2896306>



DIN rail connector, color: black, nominal current: 3 A (Total current of 25 A max.), rated voltage (III/2): 30 V, number of positions: 16, product range: BC 107,6.., pitch: 2.54 mm, mounting: DIN rail mounting, locking: without



# BC 107,6 OT 1120C KMGY - Upper housing part



1646761

<https://www.phoenixcontact.com/in/products/1646761>

## HBUS8-B SET BK - Protective cap

1252176

<https://www.phoenixcontact.com/in/products/1252176>



Set of 3 caps, for protecting unused DIN rail bus connectors, simply snap on to fit

---

## HBUS-B SET BK - Protective cap

2278173

<https://www.phoenixcontact.com/in/products/2278173>



Set of 3 caps, for protecting unused DIN rail bus connectors, simply snap on to fit

# BC 107,6 OT 1120C KMGY - Upper housing part



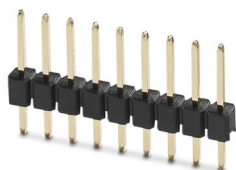
1646761

<https://www.phoenixcontact.com/in/products/1646761>

## PSTD 0,65X0,65/9-1-2,54 - Pin strip

1252180

<https://www.phoenixcontact.com/in/products/1252180>



Pin strip, color: black, nominal current: 3 A (per contact), rated voltage (III/2): 100 V, contact connection type: Pin, number of potentials: 9, number of rows: 1, number of positions: 9, number of connections: 9, product range: PSTD 0,65X0,65/...-1-V, pitch: 2.54 mm, mounting: THR soldering, pin layout: Linear pinning, solder pin [P]: 6.3 mm, locking: without, type of packaging: packed in cardboard

---

## PSTD 0,65X0,65/9-2,54 - Pin strip

2200700

<https://www.phoenixcontact.com/in/products/2200700>



Pin strip, color: black, contact connection type: Pin, number of potentials: 18, number of rows: 2, number of positions: 18, number of connections: 18, product range: PSTD 0,65X0,65/...-V, pitch: 2.54 mm, mounting: THR soldering, pin layout: Linear pinning, solder pin [P]: 2.5 mm, locking: without, type of packaging: packed in cardboard

# BC 107,6 OT 1120C KMGY - Upper housing part



1646761

<https://www.phoenixcontact.com/in/products/1646761>

## PSTD 0,65X0,65/9-3IS-2,54 - Pin strip

1252178

<https://www.phoenixcontact.com/in/products/1252178>



Pin strip, color: black, nominal current: 3 A (per contact), rated voltage (III/2): 100 V, contact connection type: Pin, number of potentials: 9, number of rows: 1, number of positions: 9, number of connections: 9, pitch: 2.54 mm, mounting: THR soldering, pin layout: Linear pinning, solder pin [P]: 2.5 mm, locking: without, type of packaging: packed in cardboard

---

## PSTD 0,65X0,65/18-3IS-2,54 - Pin strip

2202993

<https://www.phoenixcontact.com/in/products/2202993>



Pin strip for connecting an additional PCB or PCB with hole pattern to the HBUS

## BC 107,6 OT 1120C KMGY - Upper housing part

1646761

<https://www.phoenixcontact.com/in/products/1646761>



## FUSSRIEGEL 14,4 L30 SPERR OG - Base latch

2896998

<https://www.phoenixcontact.com/in/products/2896998>



DIN rail housing for use in distribution boards in accordance with DIN 43880, Base latch, width: 14.4 mm, height: 29.8 mm, depth: 5.9 mm, color: orange (similar RAL 2003)

---

## KP BC K4 C2 P5 - Membrane keypad

1337341

<https://www.phoenixcontact.com/in/products/1337341>



Membrane keypad for BC 107,6 and BC 161,6, self-adhesive, conductive silver technology, 4 keys, 2 colors, 7-pos. terminal lug, pitch: 1.0 mm, customizable in the online configurator

# BC 107,6 OT 1120C KMGY - Upper housing part



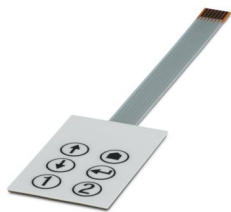
1646761

<https://www.phoenixcontact.com/in/products/1646761>

## KP BC K6 C2 P7 - Membrane keypad

1337344

<https://www.phoenixcontact.com/in/products/1337344>



Membrane keypad for BC 107,6 and BC 161,6, self-adhesive, conductive silver technology, 6 keys, 2 colors, 7-pos. terminal lug, pitch: 1.0 mm, customizable in the online configurator

---

Phoenix Contact 2025 © - all rights reserved

<https://www.phoenixcontact.com>

PHOENIX CONTACT (I) Pvt. Ltd.

A-58/2, Okhla Industrial Area, Phase - II, New Delhi-110 020

+91.1275.71420

[info@phoenixcontact.co.in](mailto:info@phoenixcontact.co.in)