

4/5 Port Air Operated Valve

Series VZA3000



Body ported

Base mounted

Model

Valve model	Configuration	Port size	Effective area ⁽¹⁾ (mm ²) (Nl/min)	Pilot port size	Weight ⁽²⁾ (g)
Body ported	VZA3120-M5	2 position single	3.6 (178.30)	M5	45
	VZA3220-M5	2 position double	3.6 (178.30)		60
	VZA3320-M5	3 position closed centre	3.2 (160.47)		70
	VZA3420-M5	3 position exhaust centre	3.6 (178.30) [2.7 (133.73)]		
	VZA3520-M5	3 position pressure centre	P→A, B: 4.0 (196.13) [2.7 (133.73)] A, B→R1, R2: 3.4 (169.39)		
Base mounted (With sub-plate)	VZA3140-01F	2 position single	4.5 (222.88)	M5	90 (45)
	VZA3240-01F	2 position double	4.5 (258.54)		110 (60)
	VZA3340-01F	3 position closed centre	3.4 (169.39)		120 (70)
	VZA3440-01F	3 position exhaust centre	4.5 (222.88) [2.7 (133.73)]		
	VZA3540-01F	3 position pressure centre	P→A, B: 5.3 (258.54) [3.1 (151.56)] A, B→R1, R2: 4.0 (196.13)		

Note 1) [] for normal position. Exhaust centre: A, B→R1, R2, Pressure centre P→A, B

Note 2) (): Without sub-plate

Note 3) Model number for 5 port base mounted style without sub-plate is VZA3□40.

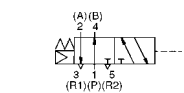
With Bracket

Air operated valve model No.	VZA3120-M5-F	The mounting bracket is supplied unattached.
---------------------------------	--------------	--

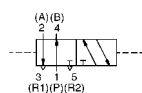
JIS Symbol

Body ported

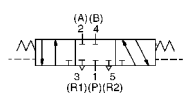
2 position single



2 position double



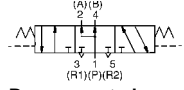
3 position closed centre



3 position exhaust centre

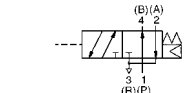


3 position pressure centre

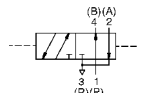


Base mounted

2 position single



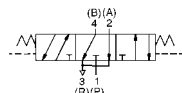
2 position double



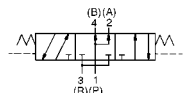
3 position closed centre



3 position exhaust centre



3 position pressure centre



Caution

Refer to p.0-33 to 0-36 for Safety Instruction and common precautions.

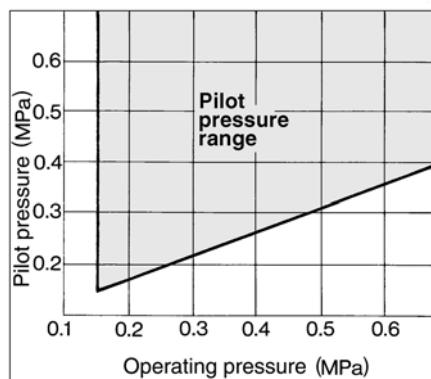
Specifications

Fluid	Air	
Operating pressure range (MPa)	2 position single	0.15 to 0.7
	2 position double	0.1 to 0.7
	3 position	0.15 to 0.7
Pilot pressure range (MPa)	2 position single	(0.4 X P+0.1) to 0.7P: Operating pressure
	2 position double	0.1 to 0.7
	3 position	0.15 to 0.7
Ambient and fluid temperature (°C)	Max. 60	
Lubrication	Not required	
Mounting	Free	
Impact/Vibration resistance (m/s ²) ⁽¹⁾	300/50	

Note 1) Impact resistance: No malfunction from test using drop impact tester, to axis and right angle directions of main valve, each one time when pilot signal is ON and OFF. (Initial valve)

Vibration resistance: No malfunction from test with 8.3 to 2000Hz 1 sweep, to axis and right angle directions of main valve, each one time when pilot signal is ON and OFF. (Initial valve)

Pilot Pressure Range (Single pilot)



How to Order Manifold

Use the same manifold bases as the VZ3000.

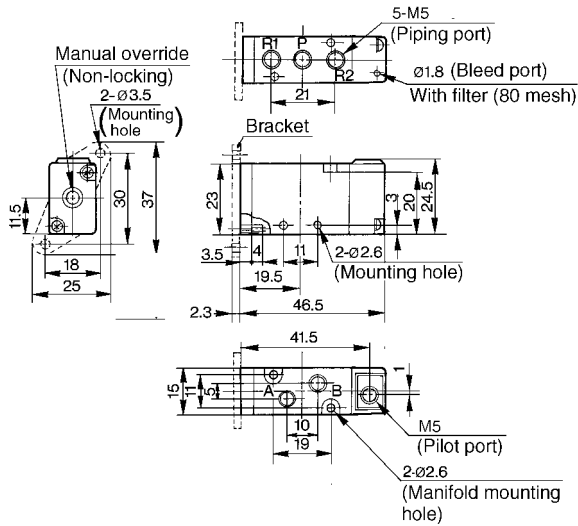
The remainder of the manifold part number is the same as VV523.

*Specify the part number for the valve(s), blank plate assembly and manifold base.

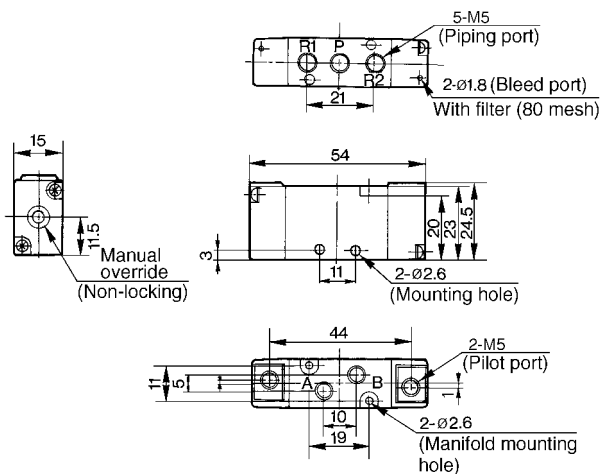
<Example> **VV5ZA3-42-031-01F**1 pc.
VZA31401 pc.
VZA32401 pc.
DXT192-13-1A1 pc.

Dimensions/Body Ported

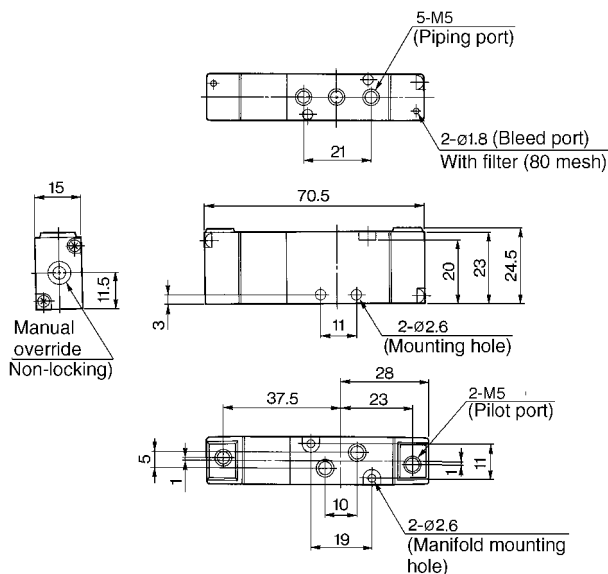
2 position single: VZA3120-M5(-F)



2 position double: VZA3220-M5

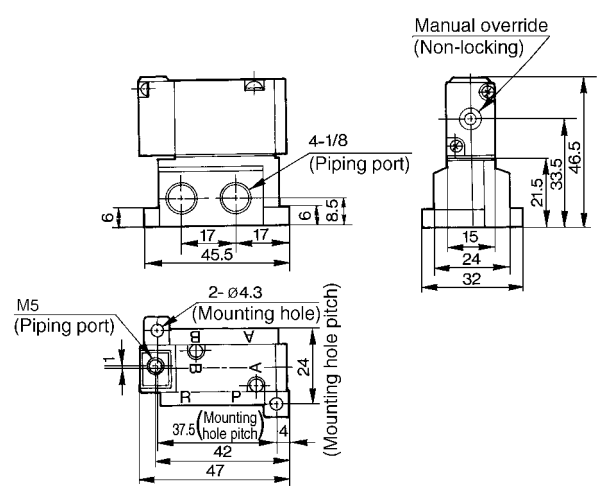


3 position closed centre/exhaust centre/pressure centre VZA3³/₄20-M5

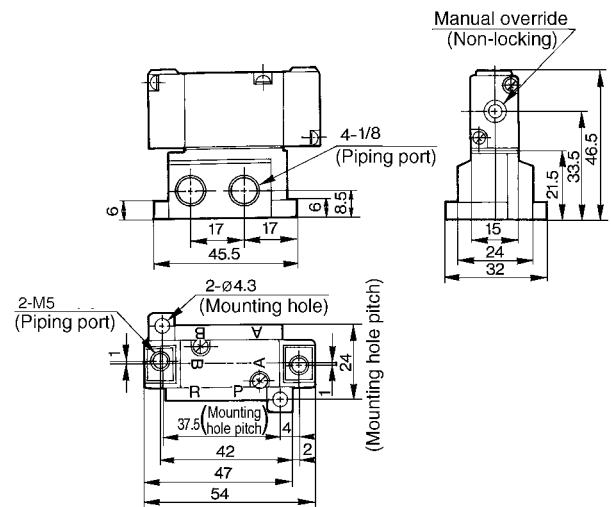


Dimension/Base Mounted

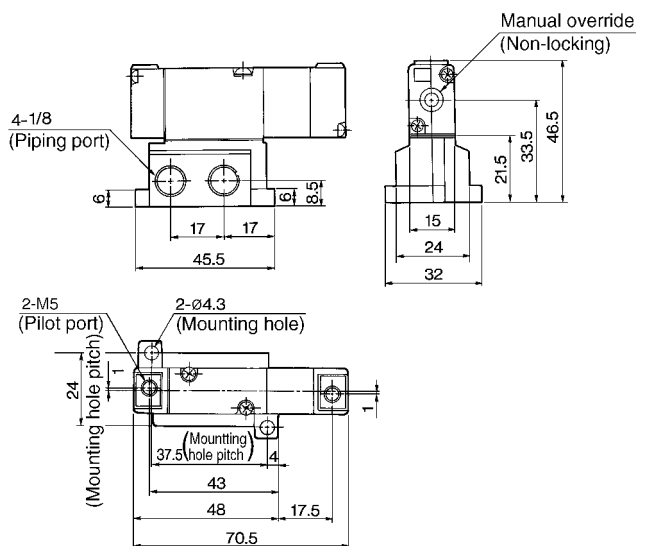
2 position single: VZA3140-01F



2 position double: VZA3240-01F



3 position closed centre/exhaust centre/pressure centre VZA3³/₄40-01F



S□A

V□A

S□A

V□A

VM/VR

VH

4/5 Port Air Operated Valve

Series VZA5000



Body ported

Base mounted

Model

Valve model	Configuration	Port size	Effective area ⁽²⁾ (mm ²) (Nz/min)	Pilot port size	Weight ⁽³⁾ (g)
Body ported	VZA5120-01F	2 position single	11 (534.90)	M5	90
	VZA5220-01F	2 position double	11 (534.90)		110
	VZA5320-01F	3 position closed centre	8.5 (419.01)		120
	VZA5420-01F	3 position exhaust centre	9 (445.75) [6.5 (320.94)]		
Base mounted (With sub-plate)	VZA5520-01	3 position pressure centre	P→A, B: 13.5 (668.63) [7 (347.69)] A, B→R1, R2: 7 (347.69)	M5	170 (90)
	VZA5140-01F	2 position single	12.6 (624.05)		
	VZA5240-01F	2 position double	12.6 (624.05)		190 (110)
	VZA5340-01F	3 position closed centre	8.5 (419.01)		200 (120)
	VZA5440-01F	3 position exhaust centre	9 (445.75) [6.5 (320.94)]		
	VZA5540-01F	3 position pressure centre	P→A, B: 13.5 (668.63) [7 (347.69)] A, B→R1, R2: 7 (347.69)		



Note 1) P, A, B port=1/8. R1, R2 port=1/4

Note 2) [] for normal position. Exhaust centre: A, B→R1, R2, Pressure centre P→A, B

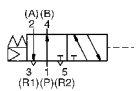
Note 3) (): Without sub-plate

Note 4) Model number for base mounted style without sub-plate is VZA5□40.

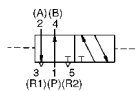
JIS Symbol

Body ported

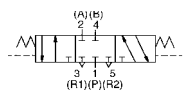
2 position single



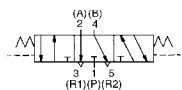
2 position double



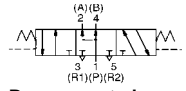
3 position closed centre



3 position exhaust centre

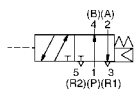


3 position pressure centre

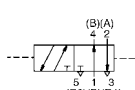


Base mounted

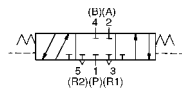
2 position single



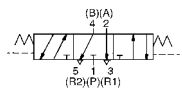
2 position double



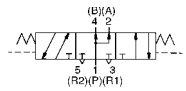
3 position closed centre



3 position exhaust centre



3 position pressure centre



Caution

Refer to p.0-33 to 0-36 for Safety Instruction and common precautions.

With Bracket

Air operated valve model No.	VZA5120-01-F	Because a bracket requires a special body, make sure to order and operate with a bracket.
------------------------------	--------------	---

Specifications

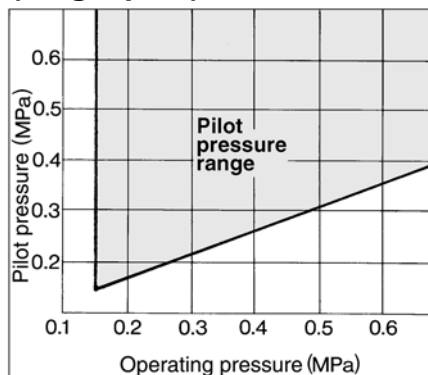
Fluid	Air	
Operating pressure range (MPa)	2 position single	0.15 to 0.7
	2 position double	0.1 to 0.7
	3 position	0.15 to 0.7
Pilot pressure range (MPa)	2 position single	(0.4 X P+0.1) to 0.7 P: Operating pressure
	2 position double	0.1 to 0.7
	3 position	0.15 to 0.7
Ambient and fluid temperature (°C)		Max. 60
Lubrication		Not required
Mounting		Free
Impact/Vibration resistance (m/s ²) ⁽¹⁾		300/50



Note 1) Impact resistance: No malfunction from test using drop impact tester, to axis and right angle directions of main valve, each one time when pilot signal is ON and OFF. (Initial valve)

Vibration resistance: No malfunction from test with 8.3 to 2000Hz 1 sweep, to axis and right angle directions of main valve, each one time when pilot signal is ON and OFF. (Initial valve)

Pilot Pressure Range (Single pilot)



How to Order Manifold

Use the same manifold bases as the VZ5000.

The remainder of the manifold part number is the same as VV525.

*Specify the part number for the valve(s), blank plate assembly and manifold base.

<Example> VV5ZA5-41-031-01F 1 pc.
VZA5140 1 pc.
VZA5240 1 pc.
DXT199-22-1A 1 pc.

