

PowerConnections

SSP3 - Euro to South African Converter Plug Technical Data & Fitting Instructions

Description

The 3 Pin Euro to South African Converter Plug (SSP3) is an adapter that converts the European IEC 83:1975 Standard C 2b, C4, C5, and C6 plug to the SABS 164-1 (BS546) system format. The plug is designed and manufactured to meet the requirements of SABS 164-1 and (BS546). It complies fully with the LVD and Plug and Socket safety regulations. The design of the clamping method ensures the body of the European IEC 83:1975 Standard C 2b, C4, C5, and C6 plug is enclosed.

Classification

- Adapter, Single portable,
- Non Re-Usable plug,
- Un-Fused,
- Normal use,
- Converts European IEC 83:1975 Standard C 2b, C4, C5, and C6 plug to the SABS 164-1 (BS546) format.
- Suitable for Class 1 and 2 devices (earthed and unearthed).
- Not Suitable for any other plug system.

Certification - SABS 164-1

Relevant Standards - SABS 164-1, IEC 60884-1

Rating

- | | |
|----------------------------|------------------------|
| - Voltage | 250V ac |
| - Current | 16 amps max, |
| - Load | 2500 watts max. |
| - Frequency | 50 Hz |
| - Environmental Protection | IP 3X |
| - Flammability | V2 (external Casing) |
| - Mechanical Strength | 1000 grams @ 500mm |
| - Colour | Black or White |
| - Weight | 50 grams typical |
| - Finish | Plain and fine sparkle |
| - Retaining Screw | Plain or Tamperproof |

Note: - Tolerance as per relevant British Standard

Safety Design Features

- Double mechanical interlocks to prevent the SSP3 from being inserted into the socket outlet without the cover and retaining screws being properly secured.
- Hinged cover
- External fuse access, opening of SSP3 not required
- No loose parts
- Plug features designed to meet the requirements of SABS 164-1

PowerConnections

Installation System

The Euro to South African Converter Plug (SSP3) is designed for use within the SABS 164-1 & BS546 Plug and Socket system only.

Fitting

The Euro to Australian Converter Plug (SSP3) should be fitted as follows (see full details below):

1. Open SSP3
 2. Insert the Schuko Plug into the SSP3.
 3. Close lid ¹
 4. Tighten retaining screws ² to 0.4N.m (4.08Kgf.cm).
 5. Assembly complete
- *NOTE 1: - If the cover does not close fully, this may mean that the Schuko Plug has not been correctly fitted, check, and rectify before use.*
 - *NOTE 2: - This torque setting is for hand screwdrivers, if required, please contact us for guidance regarding power screwdriver settings*

Service Conditions

- **Temperature Range**
 - **Storage** -40 °C to +80 °C Ambient
 - **Working** -05 °C to +35 °C 95% RH Ambient
- **Altitude 2000m above sea level max.**
- **Not subject to exposure to direct radiation from the sun**
- **Abnormal Condition - Avoid pollution by smoke, chemical and flammable fumes salt laden spray, periods of high humidity > 95% relative humidity (RH)**

PowerConnections

SSP3 FITTING INSTRUCTIONS Straight Schuko



Diagram 1

Product received closed

Insert thumbs at "A" and "B" and pull open lid.

Product now ready to use, see diagram 2

PowerConnections

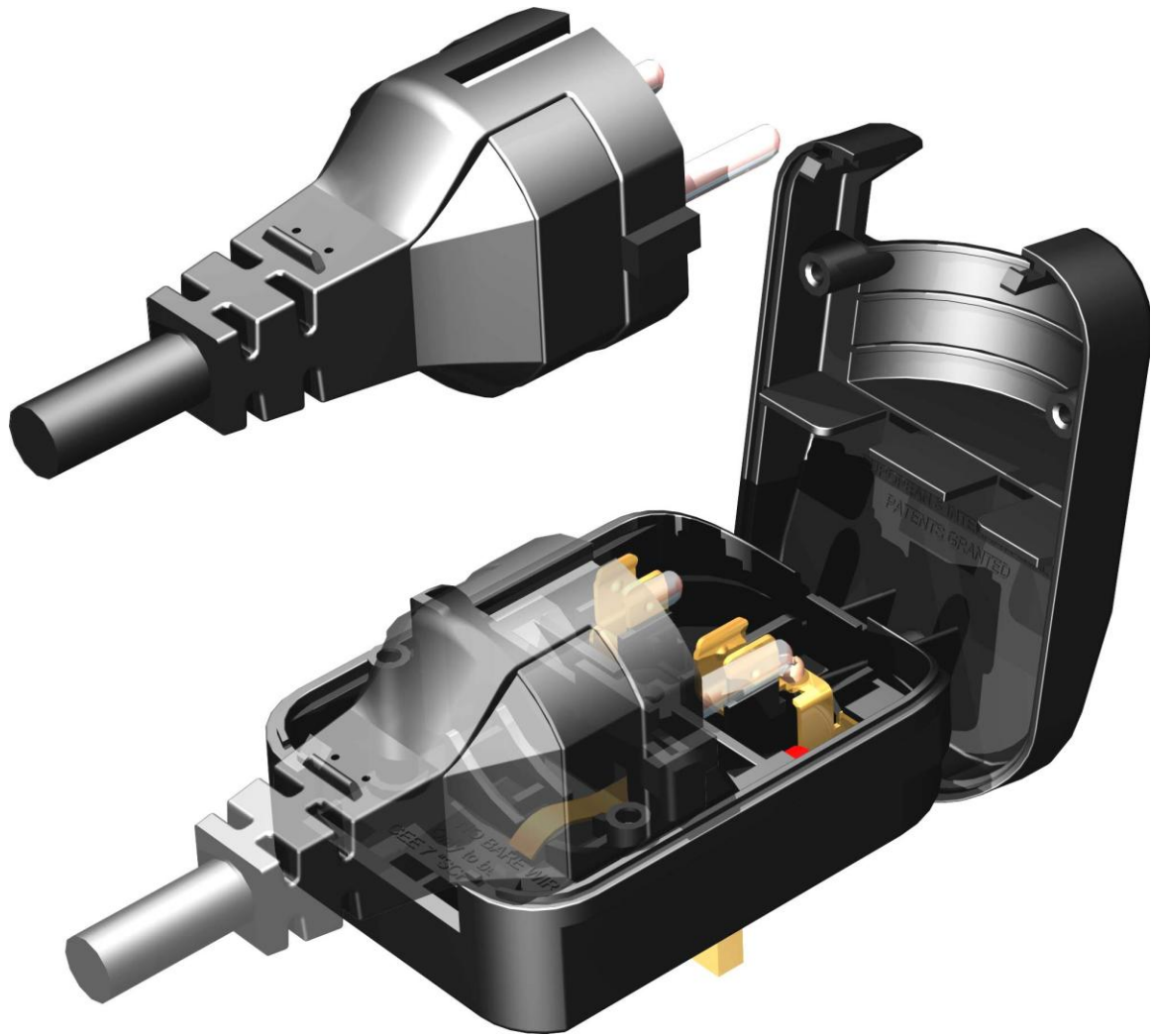


Diagram 2

Get plug and install in to clips, and close lid aligning clips, see diagram 3.

PowerConnections

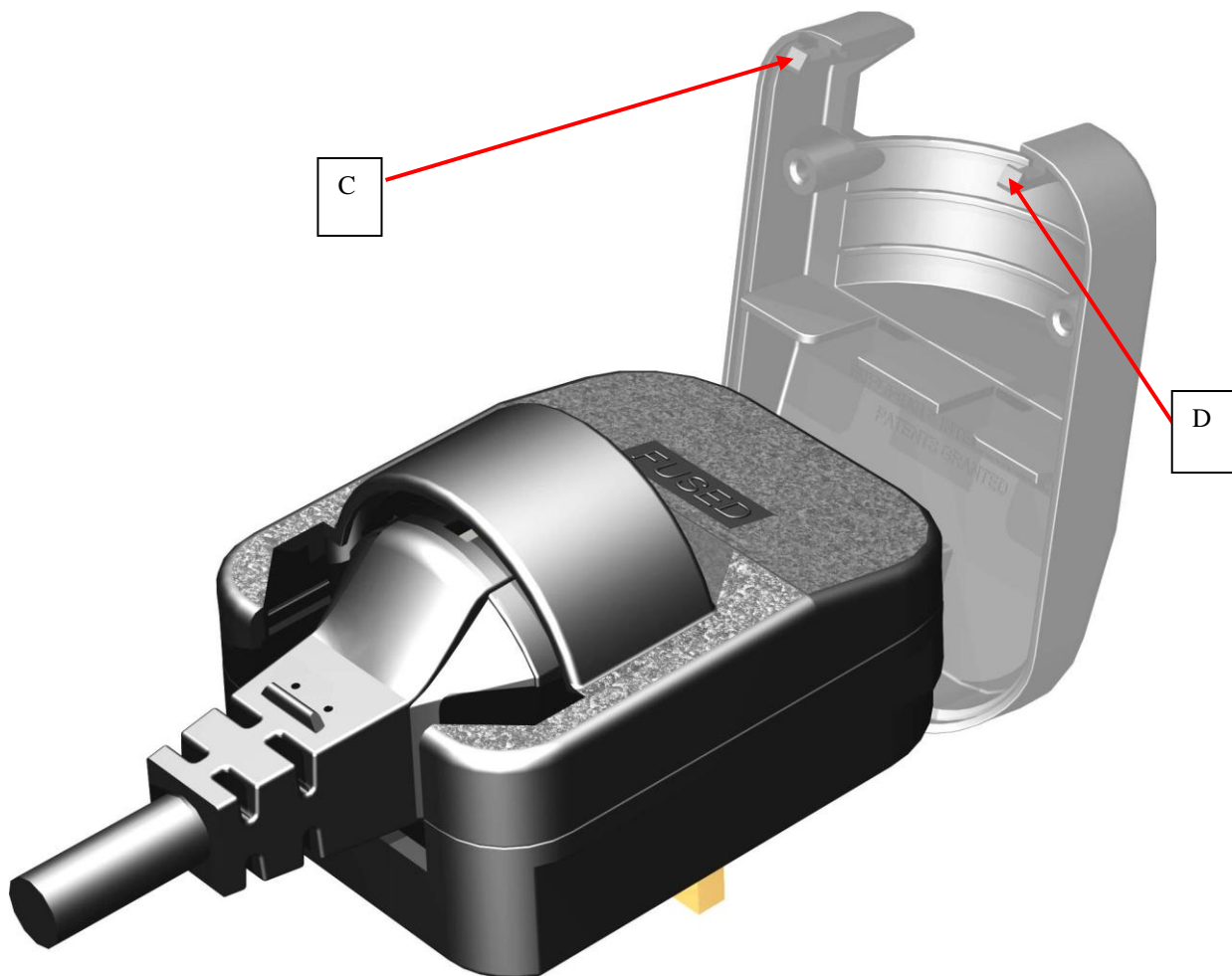


Diagram 3

Close lid

Ensure clips “C” and “D” align and click home

Lid now secured by clips, and ready to be screwed up by the 2 screws in the base, tighten screws to a torque of 0.4 Nm (**Maximum**)

Fitting complete

PowerConnections

SSP3 FITTING INSTRUCTIONS

Right Angle Schuko



Diagram 1

Product received closed

Insert thumbs at “A” and “B” and pull open lid.

Product now ready to use, see diagram 2

PowerConnections

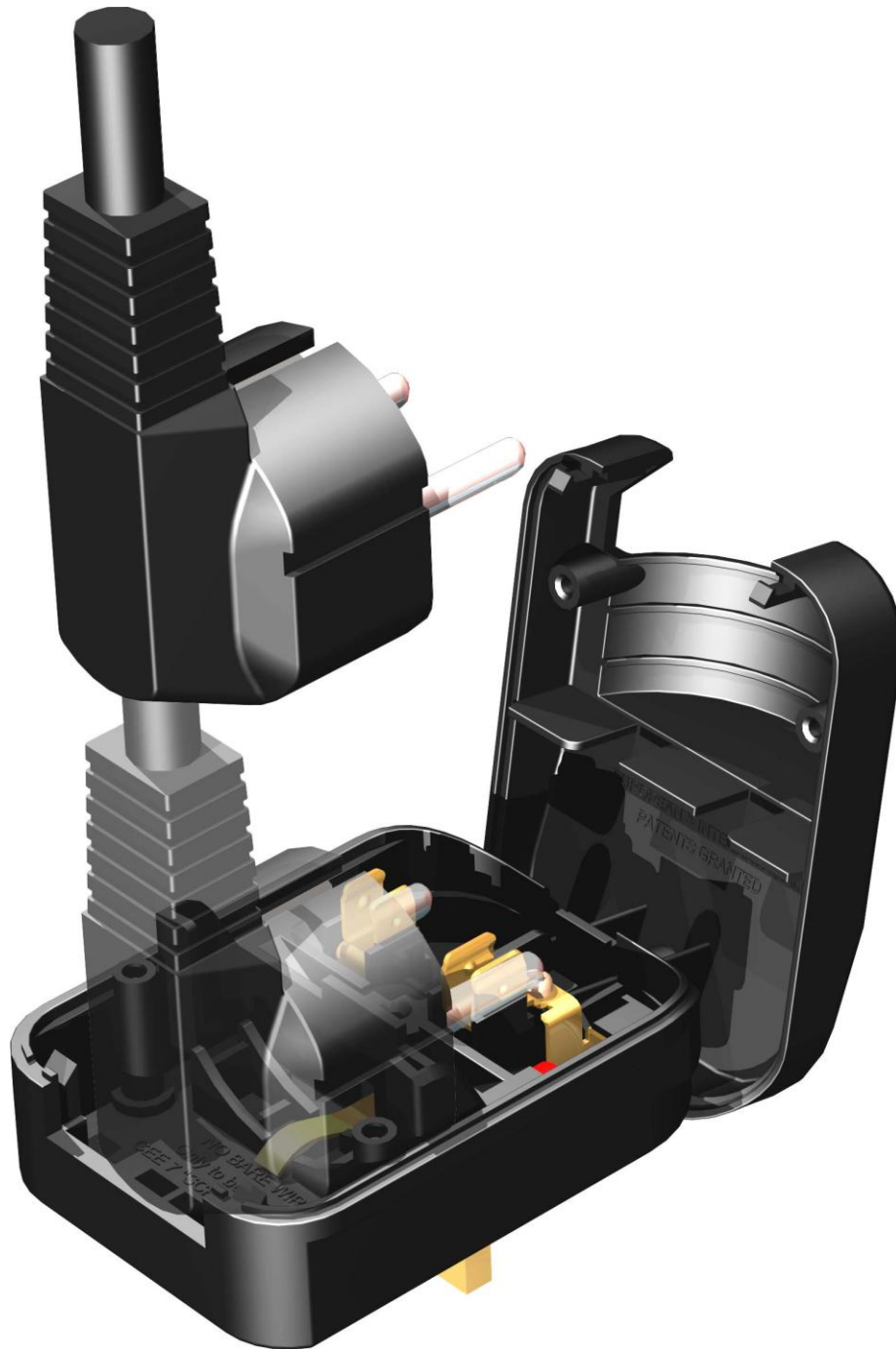


Diagram 2

Get plug and install in to clips, and close lid aligning clips, see diagram 3.

PowerConnections

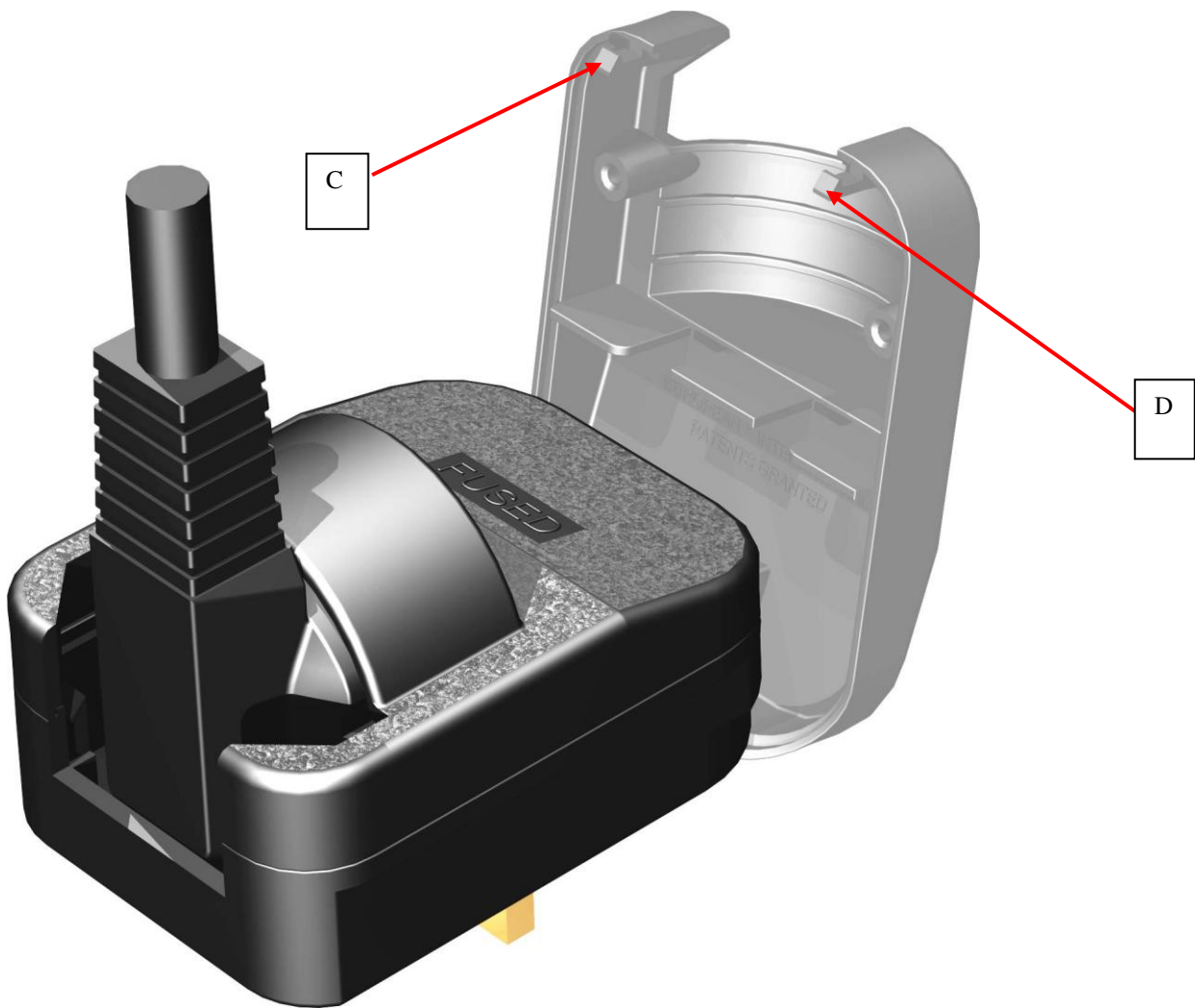


Diagram 3

Close lid

Ensure clips “C” and “D” align and click home, see diagram 4.

Lid now secured by clips, and ready to be screwed closed by the 2 screws in the base, tighten screws to a torque of 0.4 Nm (**Maximum**)

Fitting complete