

EV-T2CCS-MF-M4X10-BIT - Repair kit



1085798

<https://www.phoenixcontact.com/in/products/1085798>

Please be informed that the data shown in this PDF document is generated from our online catalog. Please find the complete data in the user documentation. Our general terms of use for downloads are valid.



CHARX connect, CCS type 2, Repair kit, Accessories, housing: black, with replaceable mating face frame, with 5x M4X10 flat-head screws with Torx safety drive (IPR TORX PLUS®), with special bit (867/4 IPR TORX PLUS® bit, 20 IPR x 89 mm) for insulated screwdriver, for replacement of the mating face frame of vehicle charging connectors, IEC 62196-3-1, Replacement without draining the coolant

Product description

Repair kit with replaceable mating face frame for CCS type 2 HPC DC vehicle connector

Your advantages

- Complete product range
- Developed and produced in accordance with the IATF 16949 automotive standard and ISO 9001
- Maintenance-friendly replacement of the mating face frame without draining the coolant

Commercial data

Item number	1085798
Packing unit	1 pc
Minimum order quantity	1 pc
Sales key	*****
Product key	XWBAFD
Catalog page	Page 41 (C-7-2019)
GTIN	4055626874449
Weight per piece (including packing)	188.6 g
Weight per piece (excluding packing)	188.6 g
Customs tariff number	85389099
Country of origin	DE

EV-T2CCS-MF-M4X10-BIT - Repair kit



1085798

<https://www.phoenixcontact.com/in/products/1085798>

Technical data

Notes

General	Replacement without draining the coolant
General	The vehicle connector housing does not have to be opened in order to replace the mating face frame.
General	<p>Please note: At the start of the HPC 500 A series project, screws with a special drive were used in the mating face frame as well as on the DC power contacts. To remove these, you can obtain the corresponding tool under item no. 1577138.</p> <p>Since December 2020, from batch number 76401, uniform screws with 20 IPR TORX PLUS® have been used.</p> <p>In addition, when you purchase a repair set from Phoenix Contact, you will always receive screws with the new IPR TORX PLUS® drive.</p>

Product properties

Product type	Repair kit
Product family	CHARX connect
Application	for replacement of the mating face frame of vehicle charging connectors
Type	Accessories
Design	<p>with replaceable mating face frame</p> <p>with 5x M4X10 flat-head screws with Torx safety drive (IPR TORX PLUS®)</p> <p>with special bit (867/4 IPR TORX PLUS® bit, 20 IPR x 89 mm) for insulated screwdriver</p>
Charging standard	CCS type 2
Charging mode	Mode 4

Material specifications

Color (Housing)	black (9005)
-----------------	--------------

Environmental and real-life conditions

Ambient conditions

Ambient temperature (operation)	-30 °C ... 50 °C
Ambient temperature (storage/transport)	-40 °C ... 80 °C

Standards and regulations

Standards

Standards/regulations	IEC 62196-3-1
-----------------------	---------------

EV-T2CCS-MF-M4X10-BIT - Repair kit

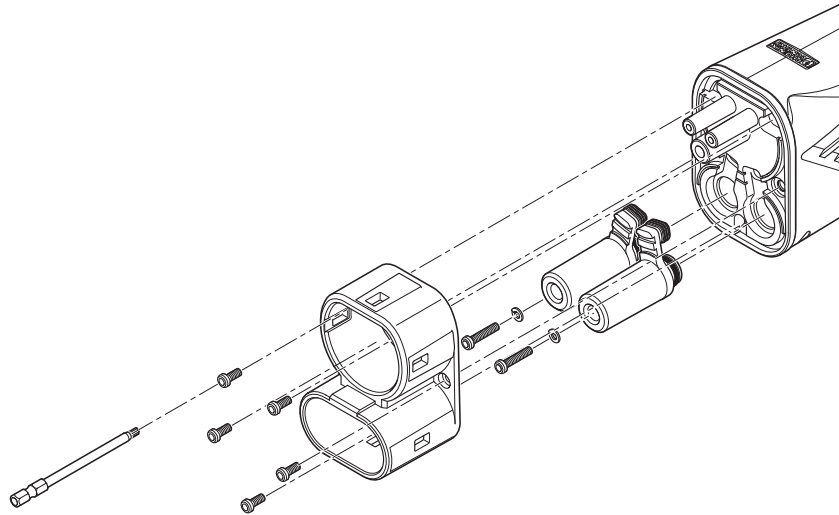


1085798

<https://www.phoenixcontact.com/in/products/1085798>

Drawings

Schematic diagram



Assembly drawing

EV-T2CCS-MF-M4X10-BIT - Repair kit



1085798

<https://www.phoenixcontact.com/in/products/1085798>

Classifications

ECLASS

ECLASS-11.0	27144792
ECLASS-12.0	27144792
ECLASS-13.0	27144792

ETIM

ETIM 9.0	EC002884
----------	----------

UNSPSC

UNSPSC 21.0	39121500
-------------	----------

EV-T2CCS-MF-M4X10-BIT - Repair kit



1085798

<https://www.phoenixcontact.com/in/products/1085798>

Environmental product compliance

EU RoHS	
Fulfills EU RoHS substance requirements	Not applicable, No electrical and electronic equipment (EEE), cannot be used in EEE
EU REACH SVHC	
REACH candidate substance (CAS No.)	No substance above 0.1 wt%

EV-T2CCS-MF-M4X10-BIT - Repair kit

1085798

<https://www.phoenixcontact.com/in/products/1085798>



Accessories

TSD-M 3NM - Torque screwdriver

1212225

<https://www.phoenixcontact.com/in/products/1212225>



Torque screw driver, accuracy as per EN ISO 6789 standard, adjustable from 1.
2 - 3 Nm

Phoenix Contact 2025 © - all rights reserved
<https://www.phoenixcontact.com>

PHOENIX CONTACT (I) Pvt. Ltd.
A-58/2, Okhla Industrial Area, Phase - II, New Delhi-110 020

+91.1275.71420
info@phoenixcontact.co.in