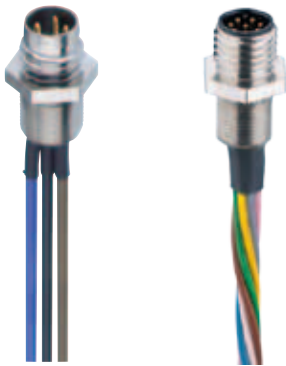


M8-Receptacle Connectors In Accordance With IEC 61076-2-104

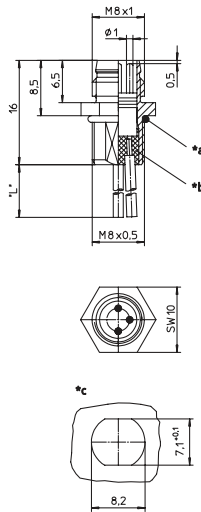
RSMF/0.5 M | RKMf/0.5 M



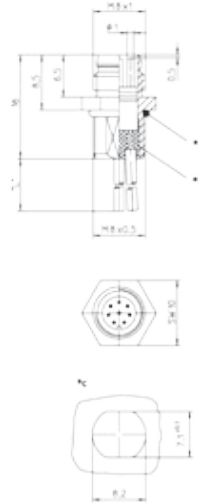
Male, 3-, 4-, and 8-Pole

Receptacle connector, M8 male connector for front mounting, assembled stranded wire, solder contacts potted with epoxy, chassis side thread M8 x 0.5 (panel nut RSKF 8).

RSMF 3/0.5 M



RSMF 8/0.5 M



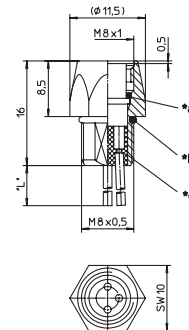
*a O-ring enclosed separately
*b solder contacts potted with epoxy
*c cut out
L 0.5 m



Female, 3-, 4-, and 8-Pole

Receptacle connector, M8 female connector for front mounting, assembled stranded wire, solder contacts potted with epoxy, chassis side thread M8 x 0.5 (panel nut RSKF 8).

RKMf/0.5 M

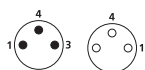


*d O-Ring
*b O-ring enclosed separately
*c solder contacts potted with epoxy
*d cut out
L 0.5 m

Pin Assignments

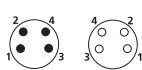
Face Views

M8 - 3 poles



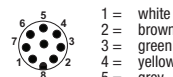
1 = brown
2 = blue
4 = black

M8 - 4 poles



1 = brown
2 = white
3 = blue
4 = black

M8 - 8 poles



1 = white
2 = brown
3 = green
4 = yellow
5 = grey
6 = pink
7 = blue
8 = red



Be Certain with Belden

M8-Receptacle Connectors In Accordance With IEC 61076-2-104
RSMF/0.5 M | RKMF/0.5 M

Technical Data

Environmental

Degree of protection IP 67 / NEMA 6P
Operating temperature range -25°C (-13°F) / +80°C (+176°F)

Mechanical

Housing / Molded body CuZn, nickel-plated
Insert PA
Contact CuZn, pre-nickeled and 0.8 microns gold-plated
O-ring FKM

Electrical

Contact resistance RSMF: ≤ 5 mΩ
Nominal current at 40°C RSMF 8: 1 A
RSMF: 4 A
Nominal voltage 60 V
RSMF 8: 32 V
Test voltage 1.5 kV eff. / 60 s
RSMF 8: 0.8 kV eff. / 60 s
Insulation resistance > 10⁹ Ω
Pollution degree 3

Part Number		Pins	Characteristics
RSMF 3/0,5 M	RKMF 3/0,5 M	3	 
RSMF 4/0,5 M	RKMF 4/0,5 M	4	 
RSMF 8/0,5 M		8	 