

8790 B Impaktor Deep Socket with 3/8" drive, 19 x 63 mm

Sockets 3/8"



EAN:	4013288233189	Size:	130x45x23 mm
Part number:	05005560001	Weight:	160 g
Article number:	8790 B Impaktor Deep	Country of origin:	TW
		Customs tariff number:	82042000

- Robust Impaktor sockets for extremely high stress; for use with electric or pneumatic wrenches with 3/8" drive
- Long sockets for low lying couplings, also suitable for fitting, protruding thread rods in confined spaces
- Hexagon profile for precise and profile-friendly screwdriving at high power transmission
- With Take it easy tool finder: colour coding by size
- With cross hole and ring socket to attach the safety pin and safety ring of machine operated tools

Long Impaktor socket for use with electric or pneumatic wrenches with 3/8" drive. Also usable at low-lying couplings and protruding thread rods. The Impaktor technology ensures higher-than-average service life even at extreme requirements. With Take it easy tool finder with colour coding by size - for quick and easy identification of the required tool. With hexagon profile and socket with hole. The hexagon profile offers the transmission of high forces and loads the edges of the bolt or the screw head less than a double hexagon profile. For external hexagon bolts and screws.

Web link

<https://www.wera.de/en/05005560001>

Wera - 8790 B Impaktor Deep
05005560001 - 4013288233189

Wera Werkzeuge GmbH
Korzter Straße 21-25
D-42349 Wuppertal
Tel: +49 (0)2 02 / 40 45-0
E-Mail: info@wera.de

Sockets 3/8"

For electric or pneumatic wrenches



The extremely robust forged design ensures higher-than-average service life of the Impaktor sockets even at extreme requirements.

Long design



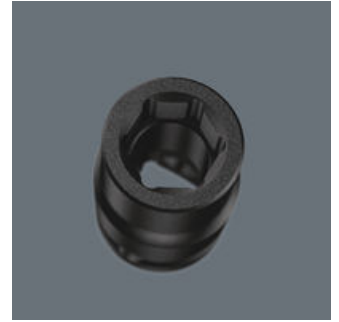
Thanks to the long design of the sockets, even couplings in tight spaces can be reached. Screwdriving at protruding thread rods can also be possible.

Cross hole and ring socket



Thanks to the hole and the ring socket, the tools can be held securely on the power tool with a safety pin or an O-ring.

Profile-friendly power transmission



The hexagon profile offers the transmission of high forces and loads the edges of the bolt or the screw head less than a double hexagon profile. Fine-toothed ratchets also make use of a double hexagon profile superfluous, even in confined spaces, thanks to their small return angle.

Take it easy tool finder system



Take it easy tool finder system - with profile and size colour-coding for quick and easy tool selection. Colour-coded system for hexagon drive screws (L-Keys, Zyklus bit sockets), external hex drive screws and nuts (Joker wrenches, Zyklus sockets and Zyklus bit sockets with holding function), and TORX® drive screws (L-Keys, Zyklus bit sockets).

Web link






<https://www.wera.de/en/05005560001>

Wera - 8790 B Impaktor Deep
05005560001 - 4013288233189

Wera Werkzeuge GmbH
Korzter Straße 21-25
D-42349 Wuppertal
Tel: +49 (0)2 02 / 40 45-0
E-Mail: info@wera.de

Sockets 3/8"

Further versions in this product family:

						
		mm	inch	mm	mm	mm
05005550001	leuchtpink_232C	8.0	-	63.0	14.1	19.0
05005551001	leuchtgelb_yellowC	10.0	-	63.0	16.6	19.0
05005552001	cyan_2985C	11.0	-	63.0	17.8	20.0
05005553001	schwarz_blackC	12.0	-	63.0	18.2	20.0
05005554001	tuerkis_339C	13.0	-	63.0	20.0	22.0
05005555001	pink_241C	14.0	-	63.0	21.0	22.0
05005556001	weiss	15.0	-	63.0	22.0	22.0
05005557001	violett_2735C	16.0	-	63.0	25.0	22.0
05005558001	rot_200C	17.0	-	63.0	26.0	23.0
05005559001	leuchtgruen_375C	18.0	-	63.0	28.0	23.0
05005560001	blau_307C	19.0	-	63.0	27.0	25.0
05005561001	gruen_363C	21.0	-	63.0	30.0	27.0
05005562001	leuchtgelb_yellowC	22.0	-	63.0	32.0	28.0
05005563001	cyan_2985C	24.0	-	63.0	34.0	30.0
05005564001	leuchtgelb_yellowC	-	1/4"	63.0	11.0	19.0
05005565001	blau_307C	-	5/16"	63.0	14.1	19.0
05005566001	rot_200C	-	3/8"	63.0	16.6	19.0
05005567001	violett_2735C	-	7/16"	63.0	17.8	19.0
05005568001	tuerkis_339C	-	1/2"	63.0	20.0	22.0
05005569001	pink_241C	-	9/16"	63.0	21.0	22.0
05005570001	schwarz_blackC	-	5/8"	63.0	24.0	22.0
05005571001	cyan_2985C	-	11/16"	63.0	25.0	23.0
05005572001	gelb_123C	-	3/4"	63.0	28.0	25.0
05005573001	blau_307C	-	13/16"	63.0	30.0	27.0
05005574001	leuchtgruen_375C	-	7/8"	63.0	32.0	28.0
05005575001	rot_200C	-	15/16"	63.0	34.0	30.0
05005576001	tuerkis_339C	-	1"	63.0	36.0	32.0

Web link

<https://www.wera.de/en/05005560001>

Wera - 8790 B Impaktor Deep
05005560001 - 4013288233189

Wera Werkzeuge GmbH
Korzter Straße 21-25
D-42349 Wuppertal
Tel: +49 (0)2 02 / 40 45-0
E-Mail: info@wera.de