



CHARACTERISTICS

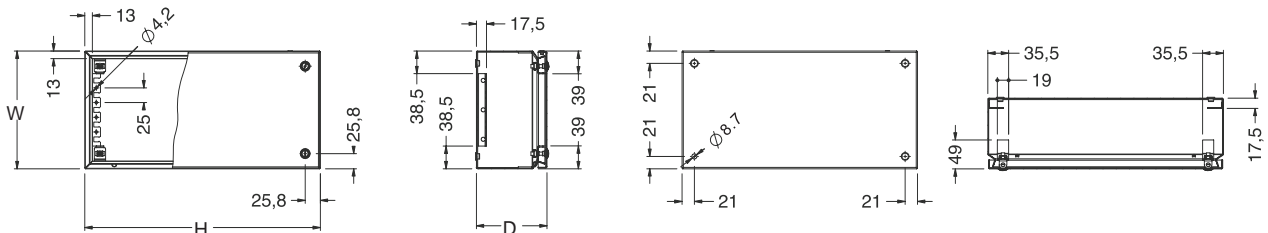
Boxes and door manufactured from 12/10 AISI 304L stainless steel (AISI 316L on request).
Lid fixing with stainless steel screws.
Holes for fixing the hinges.

PROTECTION RATINGS

-IP 66 complying with IEC EN62208; EN60529
-NEMA 4X complying with UL508A; UI50
-impact resistance IK10
complying with IEC EN62208; EN50102.

STAINLESS STEEL BOX

Model	W	H	D	Model	W	H	D	Model	W	H	D
TLX15158	150	150	80	TLX30208	300	200	80	TLX502012	500	200	120
TLX151512	150	150	120	TLX302012	300	200	120	TLX503012	500	300	120
TLX201512	200	150	120	TLX401512	400	150	120	TLX602012	600	200	120
TLX20208	200	200	80	TLX40208	400	200	80	TLX603012	600	300	120
TLX30158	300	150	80	TLX403012	400	300	120	TLX802012	800	200	120
TLX301512	300	150	120	TLX404012	400	400	120	TLX804012	800	400	120



mounting plate To be ordered separately

Model	BOX DIMENSIONS		PLATE DIMENSIONS	
	W	H	W	H
SDPA-11	150	150	140	140
SDPA-22	200	200	176	170
SDPA-32	300	200	276	170
SDPA-33	300	300	276	270
SDPA-42	400	200	376	170

mounting plate To be ordered separately ludes: single piece.