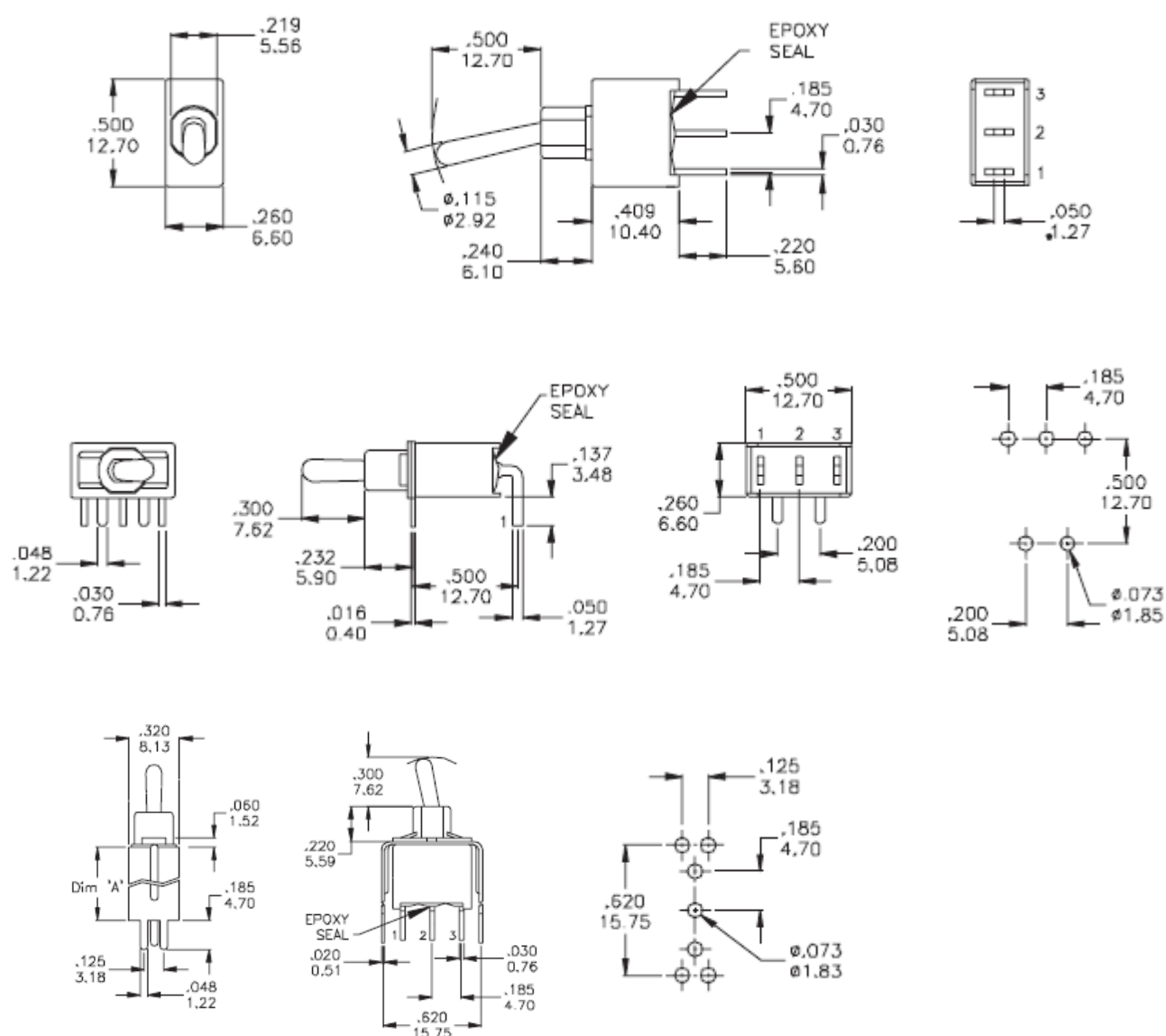


Datasheet

SPDT Toggle Switch On-On, PCB

RS Stock number **448-1128**

Drawing (mm):





ENGLISH

Specifications

Contact Rating: S (Silver) – 5A with resistive load @125 VAC or 28 VDC – 2A with resistive load @250 VAC A (Gold) – 0.4 VA max @20 VAC or DC max

Electrical Life: 50,000 make and break cycles at full load

Contact Resistance: 10 m max. Initial @ 2-4 VDC- 100 mA, for both silver and gold plated contacts

Insulation Resistance: 1000 M min

Dielectric Strength: 1500 VRMS @sea level

Operating Temperature: -20°C to 85°C