



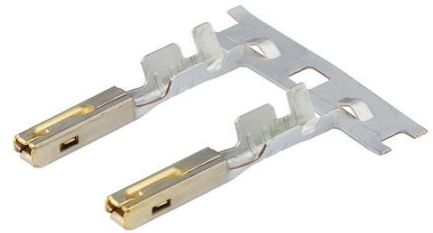
Part Number : [330013006](#)

Product Description : MX150 Female Terminal for Mat-Sealed Connectors, Gold Plating, Grip Code M3, Preferred Terminal for use in Sealed Application with 0.35-0.50mm², Left Reel Payoff

Series Number : 33001

Status : Active

Product Category : Crimp Terminals



Documents & Resources

Drawings

[330013006 sd.pdf](#)

[313025040-000.pdf](#)

Specifications

[AS-33012-002-001.pdf](#)

[AS-33012-002-CH-001.pdf](#)

[AS-33012-002-FR-001.pdf](#)

[PS-33012-002-001.pdf](#)

[TS-33001-002-001.pdf](#)

Product Environment Compliance

Compliance

GADSL/IMDS	Compliant with Exemption 44; 34; 33
China RoHS	Not Relevant
EU ELV	Compliant per 2000/53/EC
Low-Halogen Status	Not Relevant
REACH SVHC	Not Contained per D(2025)4165-DC (25 June 2025)
EU RoHS	Compliant per EU 2015/863

Compliance Statements

- EU RoHS

- REACH SVHC
- Low-Halogen

Industry Documents

- IPC 1752A Class C
- IPC 1752A Class D
- Molex Product Compliance Declaration
- IEC-62474
- chemSHERPA (xml)

Substances of Interest

- PFAS

EU RoHS Certificate of Compliance

Additional Product Compliance Information

Part Details

General

Status	Active
Category	Crimp Terminals
Series	33001
Description	MX150 Female Terminal for Mat-Sealed Connectors, Gold Plating, Grip Code M3, Preferred Terminal for use in Sealed Application with 0.35-0.50mm ² , Left Reel Payoff
Application	Power, Wire-to-Board, Wire-to-Wire, Automotive
Comments	Left Reel Payoff, Small Polarization Rib
Product Name	MX150
UPC	884982250840

Electrical

Current - Maximum per Contact	Contact Molex
Voltage - Maximum	14V DC

Physical

Gender	Female
Grip Code	M3
Material - Metal	High Performance Alloy (HPA)

Material - Plating Mating	Gold
Material - Plating Termination	Tin
Net Weight	0.435/g
Packaging Type	Reel
Plating min - Mating	0.762µm
Plating min - Termination	2.540µm
Termination Interface Style	Crimp or Compression
Wire Insulation Diameter	1.70mm max.
Wire Size (AWG)	N/A
Wire Size mm ²	0.35-0.50

Mates With / Use With

Use with Part(s)

Description	Part Number
MX150 Mat-Sealed Dual Row Female Connector Assemblies	<u>33472</u>
MX150 Mat-Sealed Single Row Female Connector Assemblies	<u>33471</u>

Application Tooling

Global

Description	Part Number
Extraction Toolkit for MX150 Connectors	<u>2002220700</u>
FA2 Mechanical Feed Crimp Applicator for MX150 Female Terminals, 0.35mm ² and 0.50mm ² ISO Wire	<u>638082500</u>
Extraction Tool for MX150L, MX150, PT Bulb Socket, iGrid, SPOX, and Wire-to-Motor Terminals	<u>638131500</u>
Hand Crimp Tool for ISO (M3) Receptacle Terminals	<u>638233700</u>
FineAdjust Applicator for SRC Connector using MX150 Receptacle	<u>639041200</u>

Terminals, 0.50mm ² wires	
--------------------------------------	--

This document was generated on Sep 23, 2025